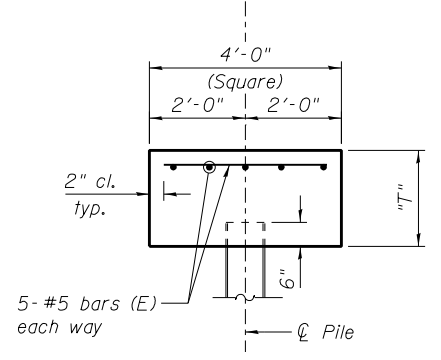


SECTION THRU PILE SUPPORTED EMBANKMENT
Looking North



PILE CAP DETAIL

DIMENSION "T"

Row 1	2'-3"
Row 2	2'-3"
Row 3	2'-0"
Row 4	2'-0"

DESIGN STRESSES

FIELD UNITS
 $f'_c = 3,500$ psi
 $f_y = 60,000$ psi (Reinforcement)
 $f_y = 50,000$ psi (piles)

NOTES

- All reinforcement shall be epoxy coated.
- A 2'-0" overlap shall be provided between adjacent sections of biaxial geogrid.
- See sheet 1 of 2 for plan view.

BILL OF MATERIAL

ITEM	UNIT	TOTAL
Concrete Structures	Cu. Yd.	376.0
Reinforcement Bars, Epoxy Coated	Pound	14,710
Furnishing Steel Piles HP10x42	Foot	17,202
Driving Piles	Foot	17,202
Test Pile Steel HP10x42	Each	4
Pile Shoes	Each	282
Biaxial Geogrid	Sq. Yd.	9,534
Granular Backfill for Structures	Cu. Yd.	3,490

PILE DATA

	Row 1	Row 2	Row 3	Row 4
Type (with pile shoes)	HP 10x42	HP 10x42	HP 10x42	HP 10x42
Nominal Required Bearing (kips)	255	242	204	160
Factored Resistance Available (kips)	140	133	112	88
Est. Length (feet)	67	64	58	55
No. Production Piles	69	70	70	69
No. Test Piles	1	1	1	1

100 S. WACKER DR.
 SUITE 600
 CHICAGO, IL 60606
 TEL (312) 939-1000
 FAX (312) 939-4998
URS

FILE NAME = D160M62-SHT-PSE02.dgn
 USER NAME = Anthony.Plutz
 PLOT SCALE = 40:0.0010 1" / 16'
 PLOT DATE = 3/13/2013

DESIGNED - MS (WE1)	REVISED -
CHECKED - MK (WE1)	REVISED -
DRAWN - PMH	REVISED -
CHECKED - AMK	REVISED -

STATE OF ILLINOIS
DEPARTMENT OF TRANSPORTATION

PILE SUPPORTED EMBANKMENT DETAILS 2
STA. 305 + 00 TO STA. 310 + 50

SHEET NO. 2 OF 2 SHEETS

F.A.P. RTE.	SECTION	COUNTY	TOTAL SHEETS	SHEET NO.
330	103R-5	COOK	778	475
CONTRACT NO. 60M62				

ILLINOIS FED. AID PROJECT