
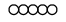
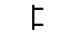

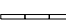



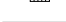





LEGEND

-  WORK ZONE
-  IMPACT ATTENUATOR, TEMPORARY
-  TYPE III BARRICADE
-  DRUMS (SPACING PER HIGHWAY STANDARD 701321-12)
-  TEMPORARY CONCRETE BARRIER
-  SIGN
-  TEMPORARY TRAFFIC SIGNAL
-  TEMPORARY RUMBLE STRIP
-  TEMPORARY RAMP
-  TEMPORARY WOOD POLE
-  TEMPORARY VIDEO DETECTION
-  TEMPORARY SPAN WIRE

STAGE II CONSTRUCTION:

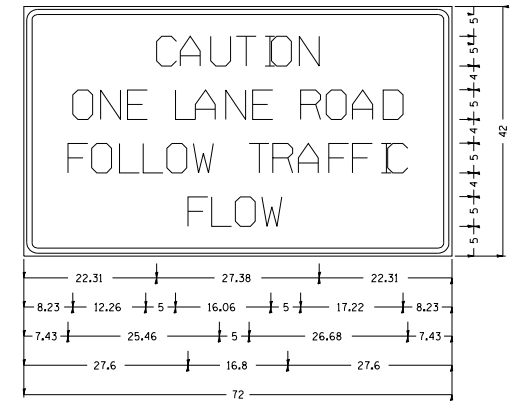
1. REMOVE CONFLICTING EXISTING PAVEMENT MARKINGS AND RAISED REFLECTIVE PAVEMENT MARKERS UNDER HIGHWAY STANDARD 701301-04.
2. CLOSE WEST HALF OF US ROUTE 52 IN ACCORDANCE WITH HIGHWAY STANDARD 701321-12 AND AS SHOWN IN THE PLANS.
3. PERFORM WEST HALF BRIDGE, BRIDGE APPROACH PAVEMENT AND BRIDGE APPROACH PAVEMENT CONNECTOR RECONSTRUCTION AS SHOWN IN THE PLANS.

STAGE III CONSTRUCTION:

1. REMOVE TEMPORARY RAMPS.
2. MILL AND RESURFACE EXISTING PAVEMENT, REPLACE SHOULDERS AND INSTALL GUARDRAIL UNDER HIGHWAY STANDARD 701201-04 AND AS DIRECTED BY THE ENGINEER.
3. APPLY PERMANENT PAVEMENT MARKINGS AND RAISED REFLECTIVE PAVEMENT MARKERS UNDER HIGHWAY STANDARD 701301-04.

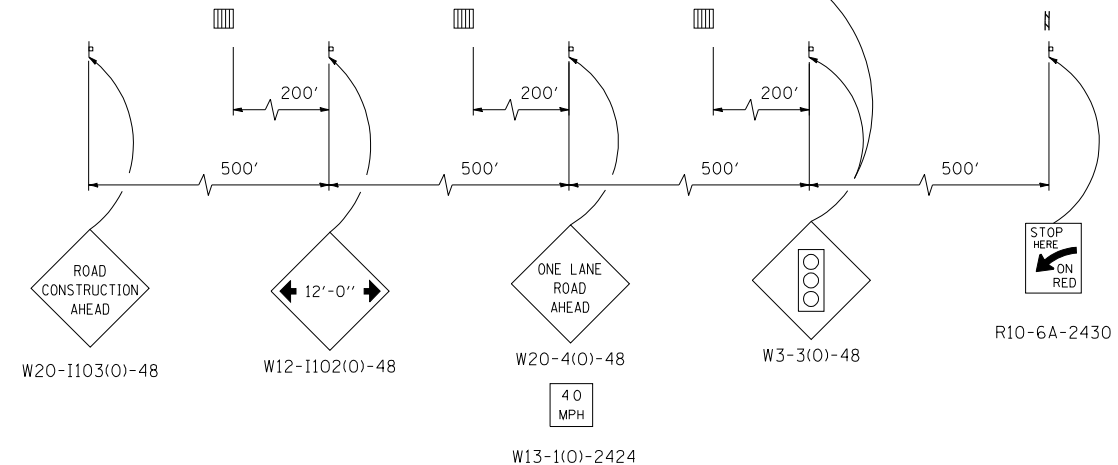
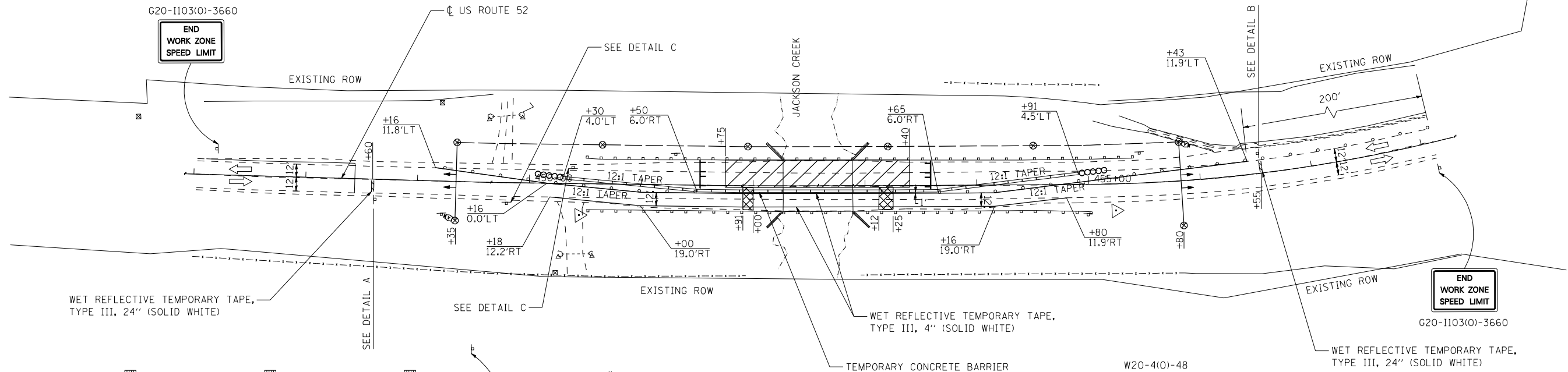
NOTES:

1. ACCESS TO ALL DRIVEWAY/ FIELD ENTRANCES SHOULD BE MAINTAINED AT ALL TIMES.
2. REFER TO TEMPORARY TRAFFIC SIGNAL PLANS FOR TEMPORARY TRAFFIC SIGNAL INSTALLATION AND LOCATION DETAILS.

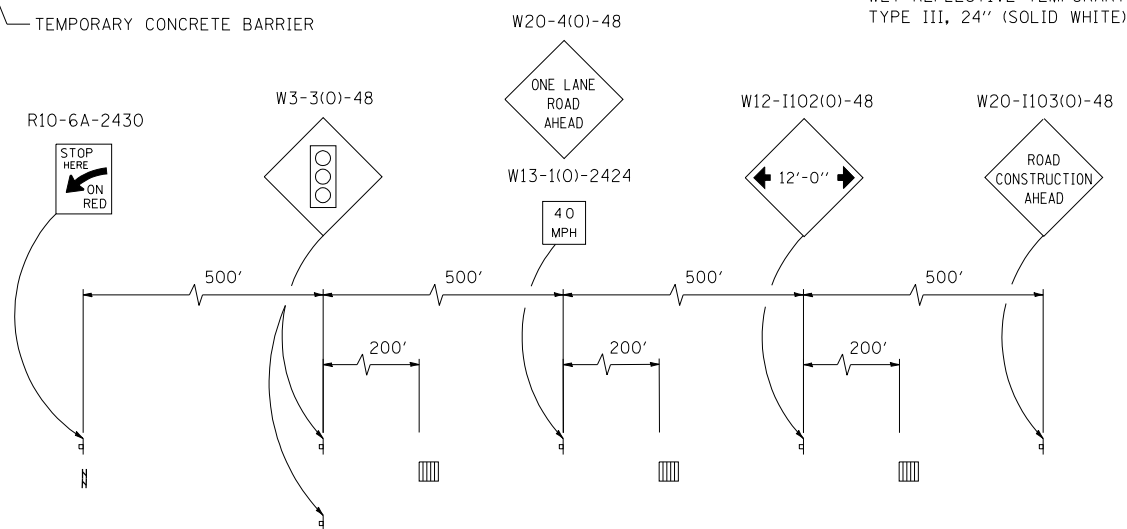


Type AA Fluorescent Orange Sheeting ;
 2.25" Radius, 0.88" Border, 0.50" Indent, Black on Orange;
 [CAUTION] D; [ONE LANE ROAD] D;
 [FOLLOW TRAFFIC] D; [FLOW] D

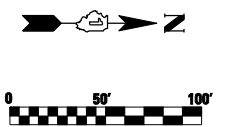
DETAIL C



DETAIL A



DETAIL B



USER NAME = \$USER\$	DESIGNED - RK	REVISED -
DRAWN - RK	REVISED -	
PLOT SCALE = \$SCALE\$	CHECKED - SEW	REVISED -
PLOT DATE = \$DATE\$	DATE - 12/11/2012	REVISED -

**STATE OF ILLINOIS
 DEPARTMENT OF TRANSPORTATION**

**MAINTENANCE OF TRAFFIC - STAGE 2
 US ROUTE 52 OVER JACKSON CREEK**

SCALE: 1" = 50' SHEET NO. 2 OF 2 SHEETS STA. 446+94.25 TO STA. 458+31.30

F.A.P. RTE. 852	SECTION 18-B-4-R-2	COUNTY WILL	TOTAL SHEETS 44	SHEET NO. 10
D-91-269-11		CONTRACT NO. 60N20		
FED. ROAD DIST. NO. 1 ILLINOIS FED. AID PROJECT				