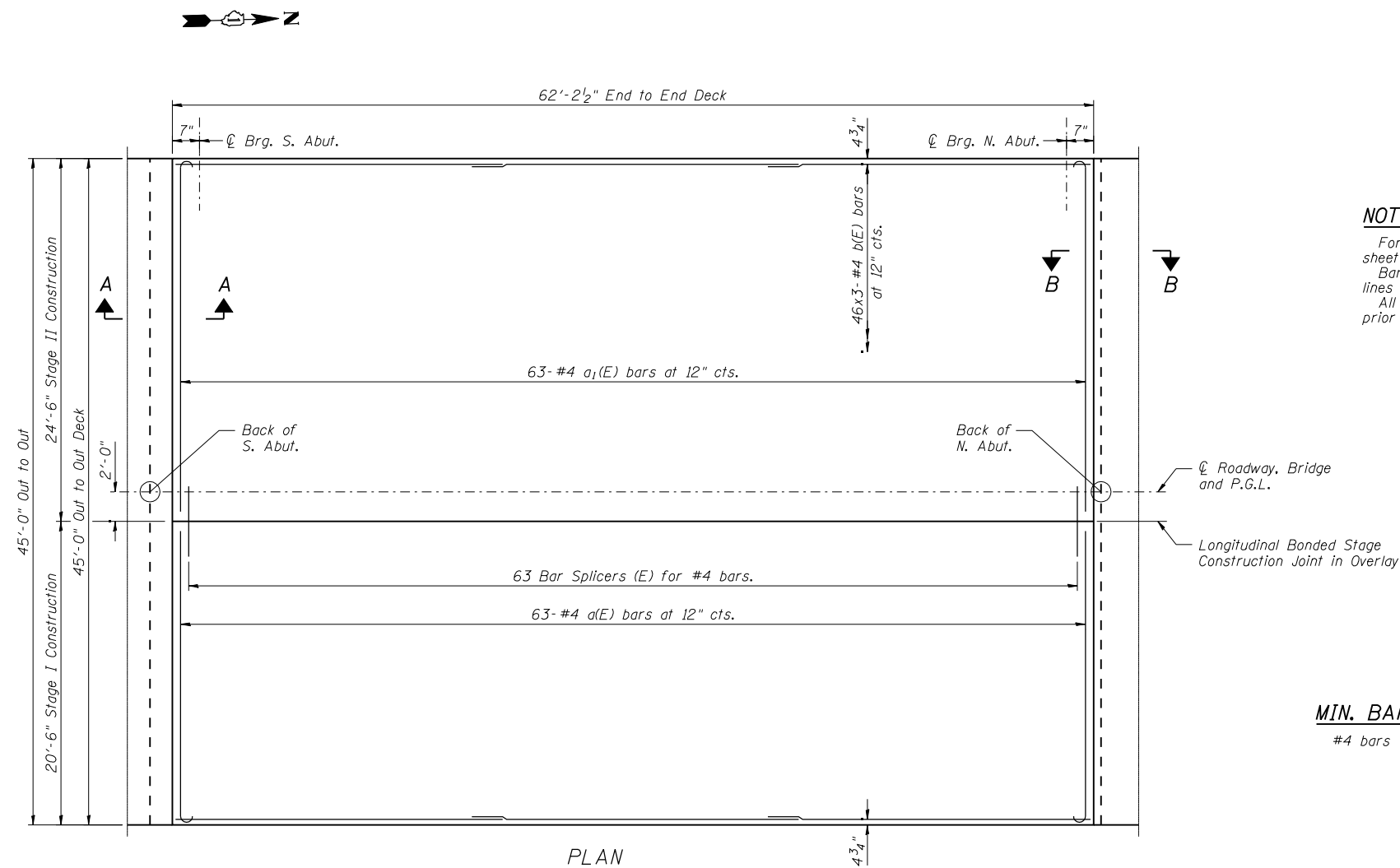


Notes:
After beams have been erected, holes shall be drilled into substructure and anchor dowels placed. Dowel holes shall be filled with non-shrink grout to top of beam and allowed to cure min. 24 hrs. prior to grouting the shear keys.
All horizontal dimensions are at right angles to beam ends.
See sheet S13 of S16 for fabric bearing pad details.

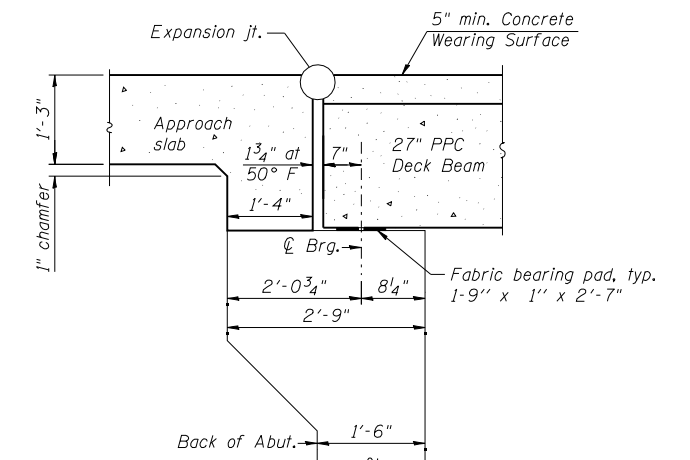
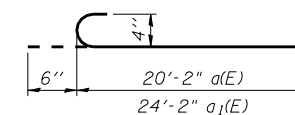


NOTES

For remainder of Superstructure Details see sheet S8 of S16, including expansion joint details. Bars indicated thus 46X3- #4, etc, indicates 46 lines of bars with 3 lengths per line. All concrete wearing surfaces shall be placed prior to casting the approach slabs.




MIN. BAR LAP

#4 bars = 2'-7"



Notes:
All horizontal dimensions are at right angles to beam ends.
See sheet S13 of S16 for fabric bearing pad details.

BILL OF MATERIAL

Bar	No.	Size	Length	Shape
a(E)	63	#4	20'-8"	
a ₁ (E)	63	#4	24'-8"	
b(E)	138	#4	22'-5"	
Concrete Wearing Surface 5"			Sq. Yd.	312
Reinforcement Bars, Epoxy Coated			Pound	3970