

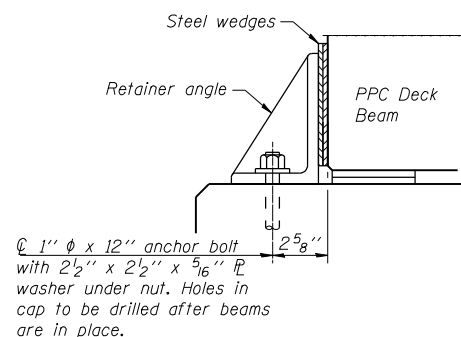
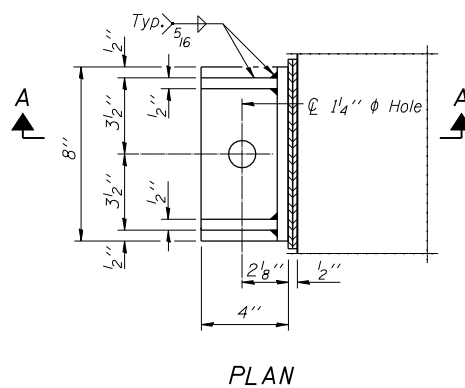
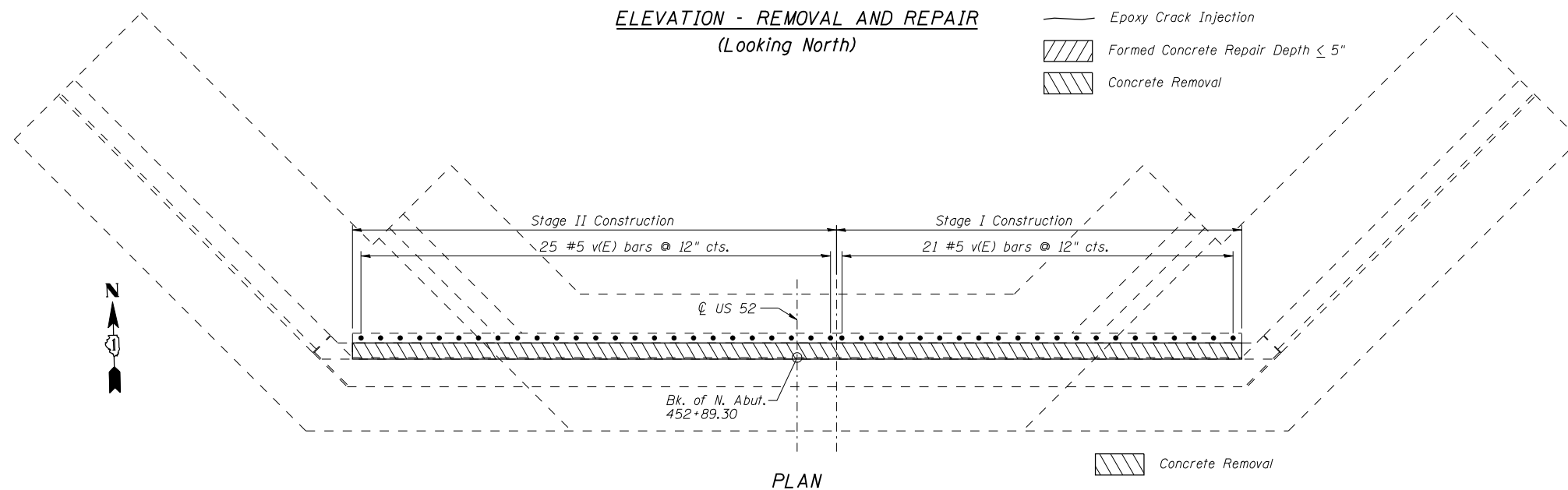
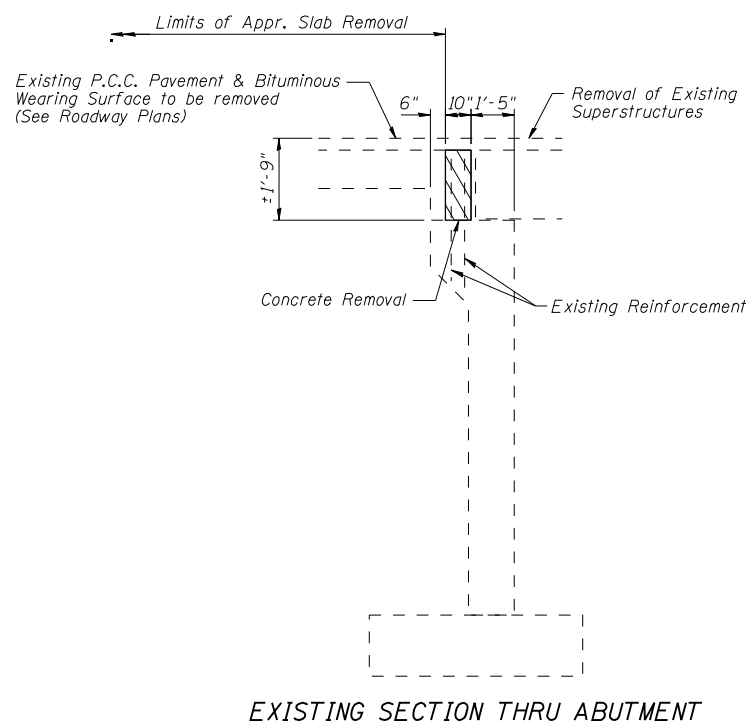
NOTES

Existing reinforcement shall be cleaned, straightened (if required) and incorporated into the new construction. Cost included with Concrete Removal.

Existing reinforcement bars which have lost 25% or more of their original diameter shall be supplemented by new epoxy coated bars of the same diameter. New bars shall be drilled and epoxy grouted in place adjacent to the original bars, as directed by the Engineer.

Epoxy grout v(E) bars in drilled holes of the depth specified by the manufacturer according to Art. 584 of the Standard Specifications. Bar lengths shown are based on 9 inch min. drilled holes. Actual bar lengths shall be adjusted as necessary.

See sht. S7 of S16 for proposed section thru abutment.



Notes:

Cost of retainer and accessories are included with Precast Prestressed Concrete Deck Beams.

Equivalent rolled angle with stiffeners will be allowed in lieu of welded plates.

The side retainers shall be galvanized after shop fabrication according to AASHTO M 111 and ASTM 385.

Anchor bolts and plate washers shall be galvanized according to AASHTO M 232.

After the notch or concrete overlay are poured and cured, the steel wedges shall be removed.

BILL OF MATERIAL

Bar	No.	Size	Length	Shape
v(E)	46	#5	3'-1"	
Concrete Removal			Cu. Yd.	3.2
Epoxy Crack Injection			Foot	86
Structural Repair of Concrete (Depth less than equal to 5")			Sq. Ft.	11
Reinforcement Bars, Epoxy Coated			Pound	150