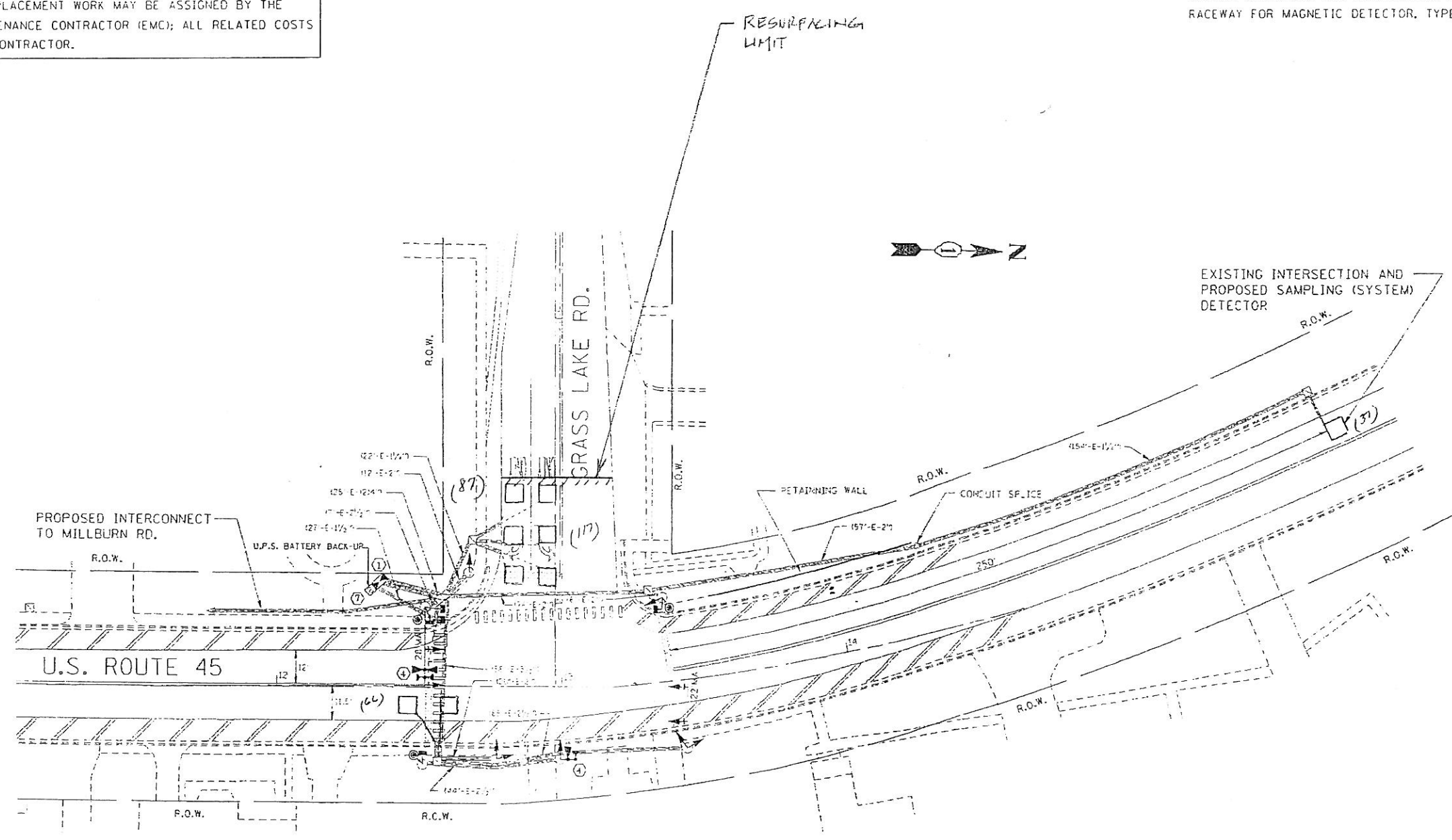


WORK SHALL MEET THE REQUIREMENTS OF THE SPECIAL PROVISIONS "TRAFFIC SIGNAL SPECIFICATIONS FOR DETECTOR LOOP REPLACEMENT AND/OR INSTALLATION ON ROADWAY GRINDING, RESURFACING AND PATCHING OPERATIONS". SPECIAL ATTENTION MUST BE MADE TO THE SECTIONS "INSPECTION OF CONSTRUCTION" AND "DETECTOR LOOP REPLACEMENT" FOR INSTALLATION AND INSPECTION REQUIREMENTS. LOOP REPLACEMENT WORK THAT DOES NOT MEET THE CONTRACT REQUIREMENTS SHALL NOT BE PAID. WORK NECESSARY TO COMPLETE THE LOOP REPLACEMENT WORK MAY BE ASSIGNED BY THE ENGINEER TO IDOT'S ELECTRICAL MAINTENANCE CONTRACTOR (EMC); ALL RELATED COSTS WILL BE THE RESPONSIBILITY OF THE CONTRACTOR.

PROPOSED EXISTING  
 SIGNAL HEAD WITH BACKPLATE  
 SIGNAL HEAD  
 GALVANIZED STEEL CONDUIT IN TRENCH OR PUSHED  
 DETECTOR LOOP  
 VEHICLE DETECTOR, NON COMPENSATED MAGNETIC TYPE  
 RACEWAY FOR MAGNETIC DETECTOR, TYPE I OR TYPE II



THIS PLAN IS FOR THE SOLE PURPOSE OF  
 DETECTOR LOOP REPLACEMENTS ONLY

REPLACE ALL DETECTOR LOOPS AS SHOWN  
 (WITHIN THE RESURFACING LIMITS)

CODE	QUANTITY	UNIT	ITEM
88600600	307	FOOT	DETECTOR LOOP, REPLACEMENT

FILE NAME : c:\p\work\p\idat\nguyensm\08112618\11a	USER NAME : nguyensm	DESIGNED : -	REVISED : -
EXTENSION : dgn		DRAWN : -	REVISED : -
PLOT SCALE : 100.0000 / IN		CHECKED : -	REVISED : -
PLOT DATE : 12/1/2010		DATE : -	REVISED : -

STATE OF ILLINOIS  
 DEPARTMENT OF TRANSPORTATION

DISTRICT ONE - DETECTOR LOOP REPLACEMENT  
 U.S. ROUTE 45 @ GRASS LAKE ROAD

F.A. RTE. 344	SECTION 39-RS-4	COUNTY LAKE	TOTAL SHEETS 38	SHEET NO. 24
CONTRACT NO. 60N30				
SCALE: SHEET NO. OF SHEETS STA. TO STA. FED. ROAD DIST. NO. ILLINOIS FED. AID PROJECT				