

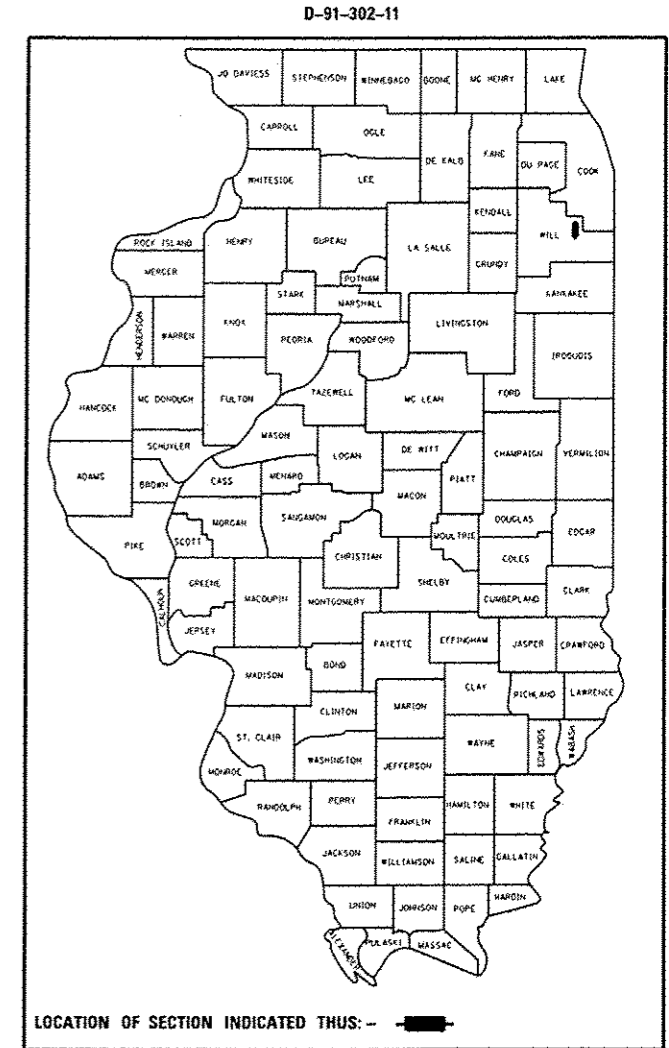
STATE OF ILLINOIS
DEPARTMENT OF TRANSPORTATION
DIVISION OF HIGHWAYS
**PROPOSED
HIGHWAY PLANS**

F.A.P. RTE.	SECTION	COUNTY	TOTAL SHEETS	SHEET NO.
330	104-RS-10	WILL	20	1
		ILLINOIS	CONTRACT NO. 60N32	

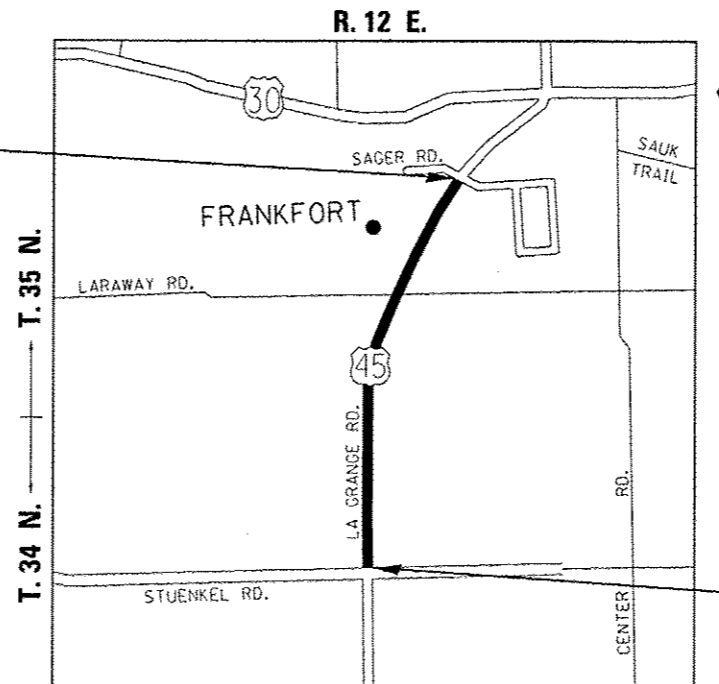
FOR INDEX OF SHEETS, SEE SHEET NO. 2

IMPROVEMENT LOCATED IN THE VILLAGE OF FRANKFORT

**F.A.P. 330 /US 45 (LA GRANGE RD.)
SAGER RD. TO STUENKEL RD.
PAVEMENT REHABILITATION
SECTION: 104-RS-10
WILL COUNTY
C-91-302-11**



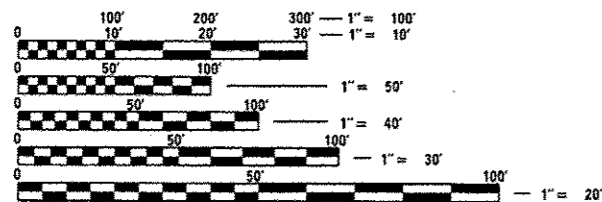
**IMPROVEMENT ENDS
STA. 163 + 34**



TRAFFIC DATA:
2011 ADT - 5650 TO 14600
SPEED LIMIT - 45 TO 55 MPH

OMISSIONS:
LARAWAY RD.
STA. 109 + 26 TO 125 + 93
JACKSON CREEK
STA. 84 + 87 TO 90 + 37

**IMPROVEMENT BEGINS
STA 3 + 59**



FULL SIZE PLANS HAVE BEEN PREPARED USING STANDARD ENGINEERING SCALES. REDUCED SIZED PLANS WILL NOT CONFORM TO STANDARD SCALES. IN MAKING MEASUREMENTS ON REDUCED PLANS, THE ABOVE SCALES MAY BE USED.

J.U.L.I.E.
JOINT UTILITY LOCATION INFORMATION FOR EXCAVATION
1-800-892-0123
OR 811

PROJECT ENGINEER: JENPAI CHANG (847) 705-4432
PROJECT MANAGER: KEN ENG (847) 705-4247

CONTRACT NO. 60N32

GROSS LENGTH OF IMPROVEMENT - 15975 LIN FT - 3.03 MI
NET LENGTH OF IMPROVEMENT - 13758 LIN FT - 2.61 MI

STATE OF ILLINOIS
DEPARTMENT OF TRANSPORTATION
DIVISION OF HIGHWAYS

SUBMITTED January 18 20 13
John Fortman
DEPUTY DIRECTOR OF HIGHWAYS, REGION ENGINEER

March 22 20 13
John D. Baranzelli, P.E.
ENGINEER OF DESIGN AND ENVIRONMENT

March 22 20 13
Omey Osman, P.E.
DIRECTOR OF HIGHWAYS, CHIEF ENGINEER

**PRINTED BY THE AUTHORITY
OF THE STATE OF ILLINOIS**

INDEX OF SHEETS

SHEET NO.

DESCRIPTION

STATE STANDARDS

GENERAL NOTES

1	COVER SHEET
2	INDEX OF SHEETS, STATE STANDARDS, AND GENERAL NOTES
3-4	SUMMARY OF QUANTITIES
5-6	EXISTING AND PROPOSED TYPICAL SECTIONS
7-12	ROADWAY AND PAVEMENT MARKING PLANS
13	DETAILS FOR FRAMES AND LIDS ADJUSTMENT WITH MILLING
14	PAVEMENT PATCHING FOR HMA SURFACED PAVEMENT
15	CURB OR CURB AND GUTTER REMOVAL AND REPLACEMENT
16	BUTT JOINT AND HMA TAPER DETAILS
17	TRAFFIC CONTROL AND PROTECTION FOR SIDE ROADS, INTERSECTIONS, AND DRIVEWAYS
18	TYPICAL APPLICATIONS FOR RAISED REFLECTIVE PAVEMENT MARKERS (SNOW PLOW RESISTANT)
19	DISTRICT ONE TYPICAL PAVEMENT MARKINGS
20	ARTERIAL ROAD INFORMATION SIGNING

000001-06	STANDARD SYMBOLS, ABBREVIATIONS AND PATTERNS
442201-03	CLASS C AND D PATCHES
482011-03	HMA SHOULDER STRIPS/ SHOULDERS WITH RESURFACING OR WIDENING AND RESURFACING PROJECTS
604011-04	FRAME AND LIDS, TYPE 1
606001-04	CONCRETE CURB AND COMBINATION CONCRETE CURB AND GUTTER
701011-03	OFF-RD MOVING OPERATIONS, 2L, 2W, DAY ONLY
701301-04	LANE CLOSURE, 2L, 2W, SHORT TERM OPERATIONS
701311-03	LANE CLOSURE, 2L, 2W, MOVING OPERATIONS-DAY ONLY
701336-04	LANE CLOSURE, 2L, 2W, WORK AREAS IN SERIES FOR SPEEDS > 45 MPH
701901-02	TRAFFIC CONTROL DEVICES
780001-03	TYPICAL PAVEMENT MARKINGS
781001-03	TYPICAL APPLICATION RAISED REFLECTIVE PAVEMENT MARKERS

BEFORE STARTING ANY EXCAVATION THE CONTRACTOR SHALL CALL "JULIE" AT 800-892-0123 OR "CUAN" (CHICAGO UTILITY ALERT NETWORK) AT 312-744-7000 FOR FIELD LOCATIONS OF BURIED ELECTRIC, TELEPHONE AND GAS FACILITIES. (48 HOURS NOTIFICATION IS REQUIRED).

10 FEET (3 METERS) TRANSITIONS SHALL BE USED TO MATCH PROPOSED CURB AND GUTTER AND MEDIAN ITEMS OF WORK TO EXISTING CURBS AND GUTTERS AND MEDIANS IN THE FIELD, UNLESS OTHERWISE SHOWN. THE TRANSITION SHALL BE PAID FOR AT THE CONTRACT UNIT PRICE FOR THE PROPOSED ITEMS OF WORK SPECIFIED.

THE CONTRACTOR SHALL COORDINATE CONSTRUCTION ACTIVITIES WITH THE UTILITY COMPANIES AND THE VILLAGE OF FRANKFORT.

THE CONTRACTOR WILL NOT BE ALLOWED TO SET UP A YARD OR FIELD OFFICE ON STATE PROPERTY WITHOUT WRITTEN PERMISSION FROM THE DEPARTMENT.

THE CONTRACTOR SHALL CONTRACT THE DISTRICT ONE TRAFFIC CONTROL SUPERVISOR AT (847) 705-4470 A MINIMUM OF 72 HOURS PRIOR TO START OF WORK.

WHEN MILLED PAVEMENT IS OPEN TO TRAFFIC THE MAXIMUM GRADE DIFFERENTIAL BETWEEN PASSES OF THE MILLING MACHINE SHALL NOT EXCEED 1 1/2 INCHES (40MM) WHERE THE SPEED LIMIT IS 45 MPH (80 KM/H). WITH WRITEN APPROVAL FROM THE ENGINEER, A MAXIMUM GRADE DIFFERENTIAL OF 3 INCHES (75MM) MAY BE ALLOWED IF THE EDGE OF THE MILLING IS SLOPED A MINIMUM 1:3 (V:H) BUTT JOINTS WILL BE INSTALLED AT THE ENDS OF ALL RESURFACING (WHERE RESURFACING MEETS EXISTING PAVEMENT), IN ACCORDANCE WITH THE "BUTT JOINT AND HMA TAPER DETAILS" SHEET INCLUDED IN THE PLANS, UNLESS OTHERWISE SPECIFIED.

PERMANENT PAVEMENT MARKINGS SHALL BE THERMOPLASTIC (OF THE EXTRUDED TYPE) AND SHOULD BE PLACED IN ACCORDANCE WITH THE "DISTRICT ONE TYPICAL PAVEMENT MARKINGS" DETAIL. (TC-13)

RAISED REFLECTIVE PAVEMENT MARKERS SHALL BE IN ACCORDANCE WITH THE DISTRICT ONE "TYPICAL APPLICATION RAISED REFLECTIVE PAVEMENT MARKERS" DETAIL.

THE RESIDENT ENGINEER SHALL CONTACT MR. LAWRENCE HILL, AREA TRAFFIC ENGINEER, AT (815) 485-6475 PRIOR TO PLACING ANY PAVEMENT MARKINGS.

FILE NAME	USER NAME	DESIGNED	REVISED	STATE OF ILLINOIS DEPARTMENT OF TRANSPORTATION	INDEX OF SHEETS, STATE STANDARDS, AND GENERAL NOTES F.A.P. 330/ US 45 (LA GRANGE RD.)--SAGER RD. TO STUENKAL RD.	F.A.P. RTE.	SECTION	COUNTY	TOTAL SHEETS	SHEET NO.	
cd:\work\sp\std\standards\0249543-0130	11-sh-triplan.dgn	DRAWN	REVISED			330	104-RS-10	WILL	20	2	
		CHECKED	REVISED			CONTRACT NO. 60N32					
		DATE	REVISED			SCALE:	SHEET NO. OF SHEETS	STA. TO STA.	FED. ROAD DIST. NO. 1 ILLINOIS FED. AID PROJECT		

URBAN

URBAN

SUMMARY OF QUANTITIES				CONSTRUCTION TYPE CODE				
CODE NO	ITEM	UNIT	100% STATE TOTAL QUANTITIES	0005				
21101615	TOPSOIL FURNISH AND PLACE, 4"	SO YD	23	23				
25200110	SODDING, SALT TOLERANT	SO YD	23	23				
40600200	BITUMINOUS MATERIALS (PRIME COAT)	TON	34	34				
40600300	AGGREGATE (PRIME COAT)	TON	170	170				
40600400	MIXTURE FOR CRACKS, JOINTS, AND FLANGEWAYS	TON	64	64				
40600895	CONSTRUCTING TEST STRIP	EACH	1	1				
40600982	HOT-MIX ASPHALT SURFACE REMOVAL - BUTT JOINT	SO YD	401	401				
40603340	HOT-MIX ASPHALT SURFACE COURSE, MIX "D", N70	TON	4671	4671				
42001300	PROTECTIVE COAT	SO YD	27	27				
44201815	CLASS D PATCHES, TYPE II, 14 INCH	SO YD	426	426				
44201819	CLASS D PATCHES, TYPE III, 14 INCH	SO YD	256	256				
44201821	CLASS D PATCHES, TYPE IV, 14 INCH	SO YD	171	171				
48102100	AGGREGATE WEDGE SHOULDER, TYPE B	TON	953	953				
60300105	FRAMES AND GRATES TO BE ADJUSTED	EACH	4	4				

SUMMARY OF QUANTITIES				CONSTRUCTION TYPE CODE				
CODE NO	ITEM	UNIT	100% STATE TOTAL QUANTITIES	0005				
67000400	ENGINEER'S FIELD OFFICE, TYPE A	CAL MO	3	3				
67100100	MOBILIZATION	L SUM	1	1				
70100450	TRAFFIC CONTROL AND PROTECTION - STANDARD 701201	L SUM	1	1				
70100460	TRAFFIC CONTROL AND PROTECTION - STANDARD 701306	L SUM	1	1				
70102620	TRAFFIC CONTROL AND PROTECTION - STANDARD 701501	L SUM	1	1				
70102635	TRAFFIC CONTROL AND PROTECTION - STANDARD 701701	L SUM	1	1				
70100600	TRAFFIC CONTROL AND PROTECTION, STANDARD 701336	L SUM	1	1				
70300100	SHORT TERM PAVEMENT MARKING	FOOT	1475	1475				
70300220	TEMPORARY PAVEMENT MARKING - LINE 4"	FOOT	38783	38783				
70300260	TEMPORARY PAVEMENT MARKING - LINE 12"	FOOT	384	384				
70300280	TEMPORARY PAVEMENT MARKING - LINE 24"	FOOT	66	66				
70301000	WORK ZONE PAVEMENT MARKING REMOVAL	SO FT	13936	13936				
*78000200	THERMOPLASTIC PAVEMENT MARKING - LINE 4"	FOOT	38783	38783				

* SPECIALTY ITEMS

FILE NAME: USER NAME: 11/11/2013

DESIGNED: DRAWN: CHECKED: DATE:

REVISED: REVISED: REVISED: REVISED:

STATE OF ILLINOIS DEPARTMENT OF TRANSPORTATION

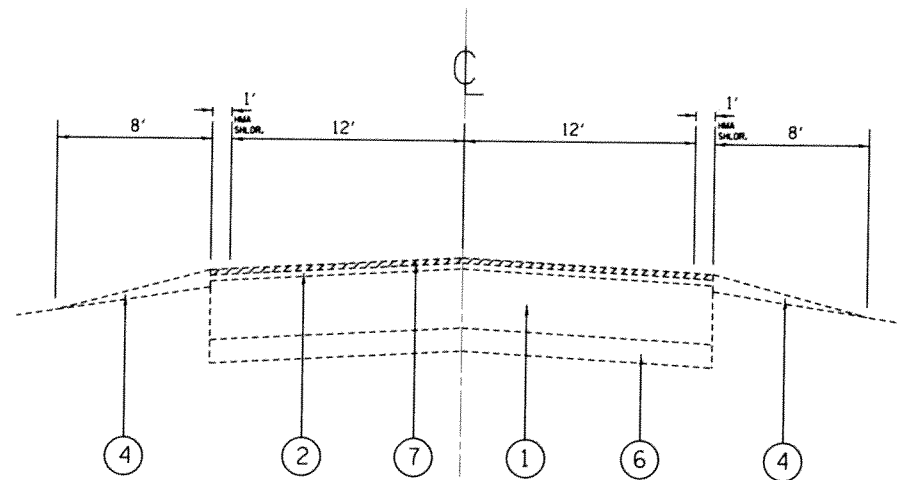
SUMMARY OF QUANTITIES F.A.P. 330/ US 45 (LA GRANGE RD.)--SAGER RD. TO STUENKAL RD.

F.A.P. RTE. 330 SECTION 104-RS-10 COUNTY WILL TOTAL SHEETS 20 SHEET NO. 3 CONTRACT NO. 60N32

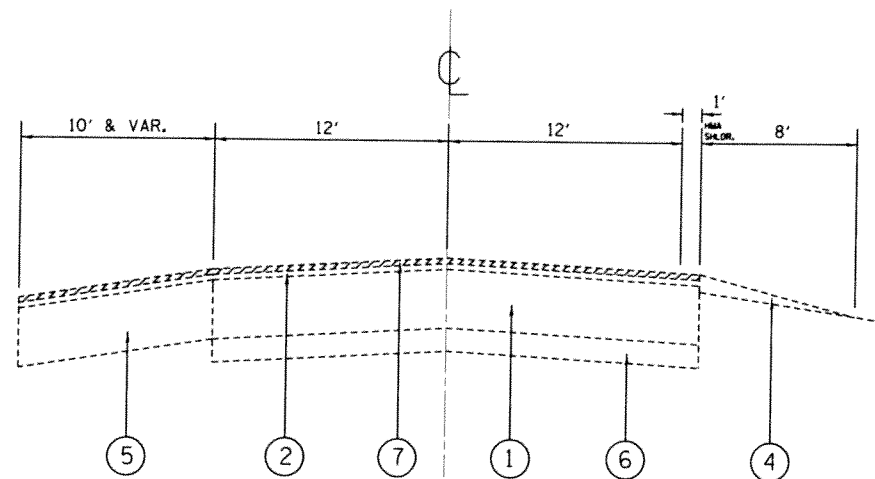
SCALE: SHEET NO. OF SHEETS STA. TO STA.

FED. ROAD DIST. NO. 1 ILLINOIS FED. AID PROJECT

Rev.



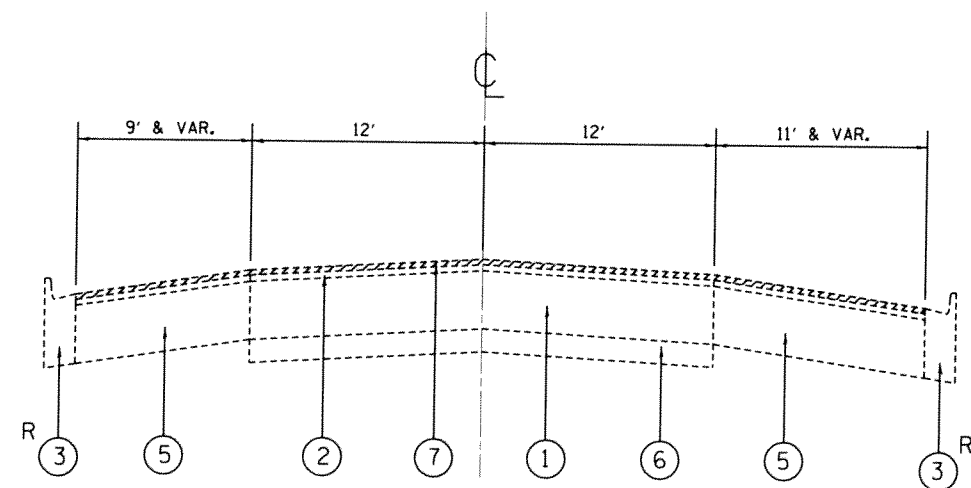
EXISTING TYPICAL SECTIONS
 STA. 3+59 TO STA. 73+10
 STA. 81+70 TO STA. 141+00
 STA. 156+50 TO STA. 163+34



EXISTING TYPICAL SECTIONS
 STA. 73+10 TO STA. 81+70

LEGEND:

- ① EXIST. P.C.C. PAVEMENT, ±9"
 - ② EXIST. HOT-MIX ASPHALT SURFACE, ±4" (AFTER HEATING AND SCARIFICATION)
 - ③ EXIST. COMBINATION CONCRETE CURB AND GUTTER, TYPE B-6.12
 - ④ EXIST. AGGREGATE SHOULDER
 - ⑤ EXIST. HOT-MIX ASPHALT SHOULDER
 - ⑥ EXIST. STABILIZED SUB-BASE
 - ⑦ PROP. HOT IN-PLACE RECYCLING, 1"
 - ⑧ PROP. POLYMERIZED HOT-MIX ASPHALT SURFACE COURSE, MIX "D", N70, 2"
 - ⑨ PROP. GRADING AND SHAPING SHOULDERS
 - ⑩ PROP. AGGREGATE WEDGE SHOULDER, TYPE B
 - ⑪ PROP. SAFETY EDGE
- R CURB AND GUTTER REMOVAL AND REPLACEMENT



EXISTING TYPICAL SECTIONS
 STA. 141+50 TO STA. 156+50

MIXTURE REQUIREMENTS

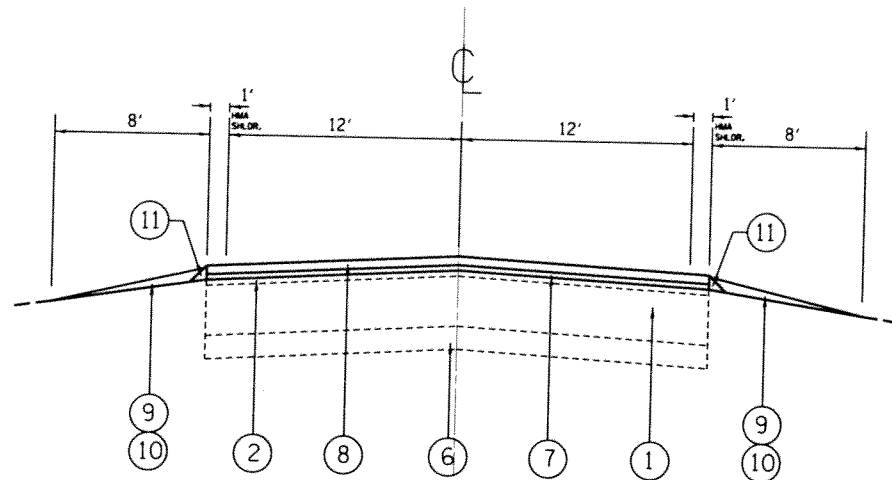
MIXTURE TYPE	AIR VOIDS @ Ndes
PATCHING	
CLASS "D" PATCHES (HMA BINDER COURSE, IL-19MM)	4% @ 70
PAVEMENT RESURFACING	
HOT-MIX ASPHALT SURFACE COURSE, MIX "D", N70, (IL 9.5MM)	4% @ 70

NOTES:

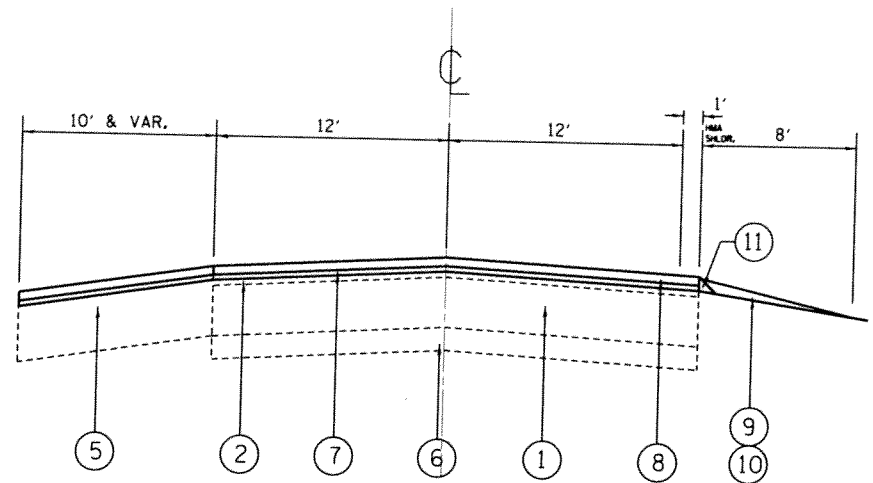
THE UNIT WEIGHT USED TO CALCULATE ALL HOT-MIX ASPHALT QUANTITIES IS 112 LBS./SQ. YD./ IN.

THE "AC TYPE" FOR POLYMERIZED HMA MIXES SHALL BE "SBS/SBR PG 70 -22" AND FOR NON-POLYMERIZED HMA THE "AC TYPE" SHALL BE "PG 64 -22" UNLESS MODIFIED BY DISTRICT ONE SPECIAL PROVISIONS. FOR "PERCENT OF RAP" SEE DISTRICT ONE SPECIAL PROVISIONS.

THE PATCHING SHALL BE DONE PRIOR TO SCARIFICATION

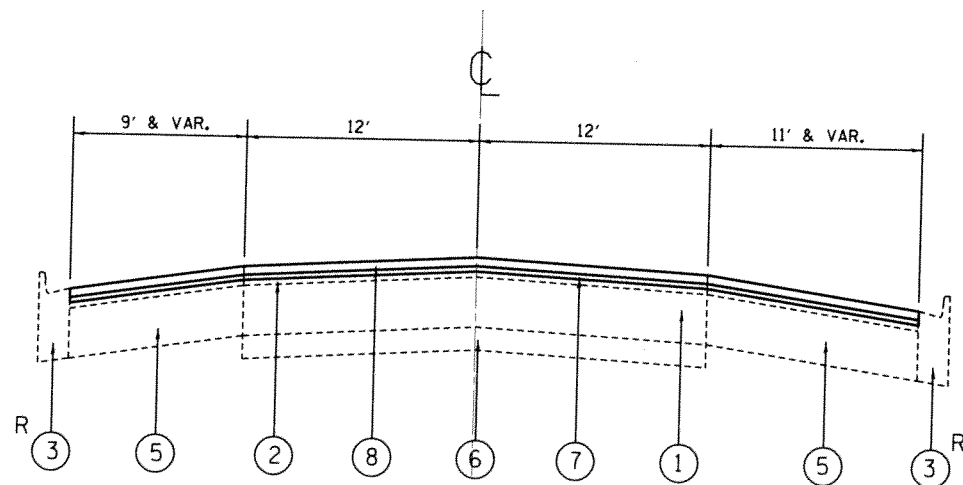


PROPOSED TYPICAL SECTIONS
 STA. 3+59 TO STA. 73+10
 STA. 81+70 TO STA. 141+00
 STA. 156+50 TO STA. 163+34



PROPOSED TYPICAL SECTIONS
 STA. 73+10 TO STA. 81+70

- LEGEND:**
- ① EXIST. P.C.C. PAVEMENT, ±9"
 - ② EXIST. HOT-MIX ASPHALT SURFACE, ±4" (AFTER HEATING AND SCARIFICATION)
 - ③ EXIST. COMBINATION CONCRETE CURB AND GUTTER, TYPE B-6.12
 - ④ EXIST. AGGREGATE SHOULDER
 - ⑤ EXIST. HOT-MIX ASPHALT SHOULDER
 - ⑥ EXIST. STABILIZED SUB-BASE
 - ⑦ PROP. HOT IN-PLACE RECYCLING, 1"
 - ⑧ PROP. POLYMERIZED HOT-MIX ASPHALT SURFACE COURSE, MIX "D", N70, 2"
 - ⑨ PROP. GRADING AND SHAPING SHOULDERS
 - ⑩ PROP. AGGREGATE WEDGE SHOULDER, TYPE B
 - ⑪ PROP. SAFETY EDGE
- R CURB AND GUTTER REMOVAL AND REPLACEMENT



PROPOSED TYPICAL SECTIONS
 STA. 141+50 TO STA. 156+50

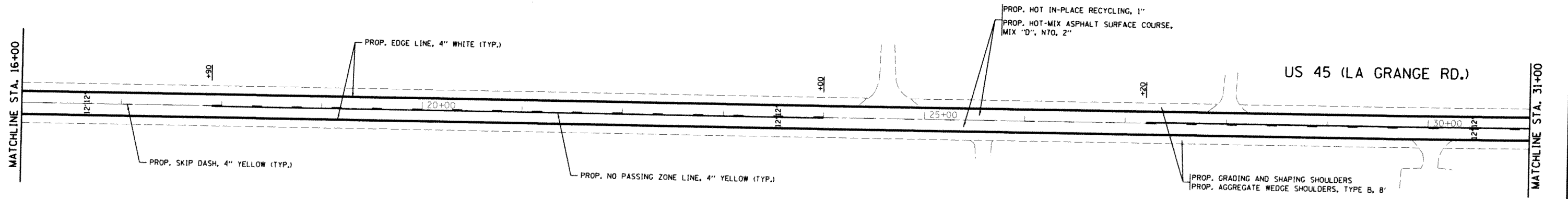
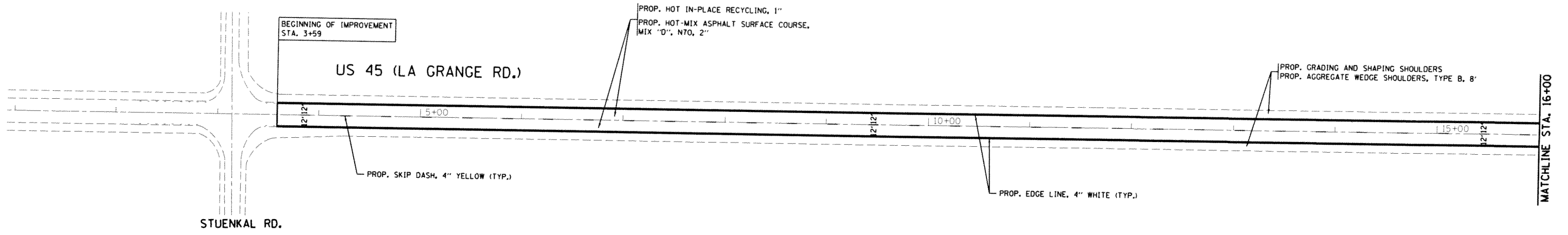
FILE NAME =	USER NAME = steedpa	DESIGNED -	REVISED -
e:\pw\work\pwidot\steedpa\d0249543\013811-sht-plan.dgn		DRAWN -	REVISED -
	PLOT SCALE = 100.0000 1/ in.	CHECKED -	REVISED -
	PLOT DATE = 1/31/2013	DATE -	REVISED -

STATE OF ILLINOIS
 DEPARTMENT OF TRANSPORTATION

PROPOSED TYPICAL CROSS SECTIONS
 F.A.P. 330/ US 45 (LA GRANGE RD.)--SAGER RD. TO STUENKAL RD.
 SCALE: SHEET NO. OF SHEETS STA. TO STA.

F.A.P. RTE.	SECTION	COUNTY	TOTAL SHEETS	SHEET NO.
330	104-R5-10	WILL	20	6

CONTRACT NO. 60N32

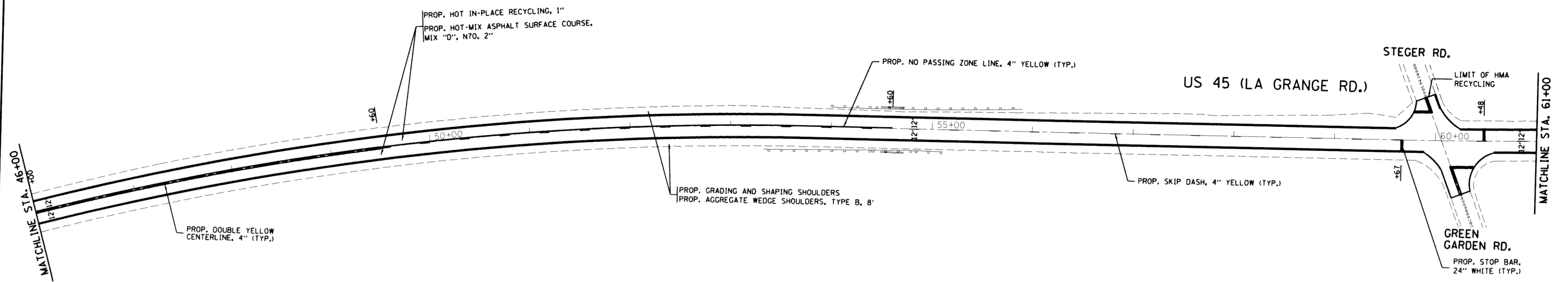
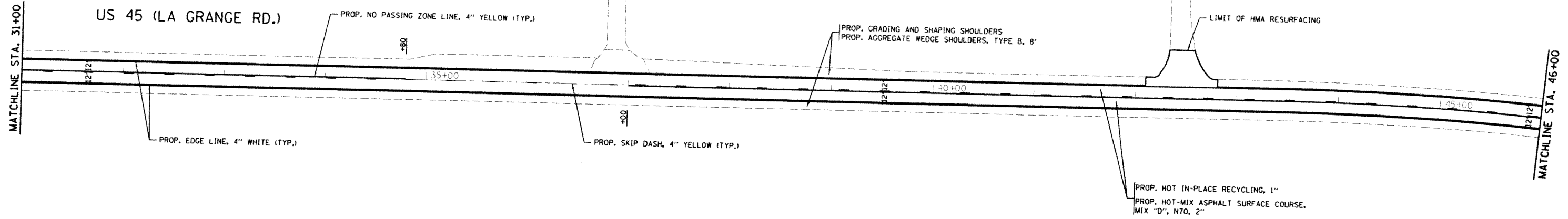


FILE NAME =	USER NAME = steedpa	DESIGNED -	REVISED -
ci:\pw-work\puidot\stedpa\d0249543\0130	11-ah-plan.dgn	DRAWN -	REVISED -
	PLOT SCALE = 100.0000 1 / in.	CHECKED -	REVISED -
	PLOT DATE = 1/31/2013	DATE -	REVISED -

**STATE OF ILLINOIS
DEPARTMENT OF TRANSPORTATION**

ROADWAY AND PAVEMENT MARKING PLAN
F.A.P. 330/ US 45 (LA GRANGE RD.)--SAGER RD. TO STUENKAL RD.
 SCALE: 1"=50' SHEET NO. OF SHEETS STA. 3+38.6 TO STA. 31+00

F.A.P. RTE.	SECTION	COUNTY	TOTAL SHEETS	SHEET NO.
330	104-RS-10	WILL	20	7
CONTRACT NO. 60N32				
FED. ROAD DIST. NO. 1 ILLINOIS FED. AID PROJECT				



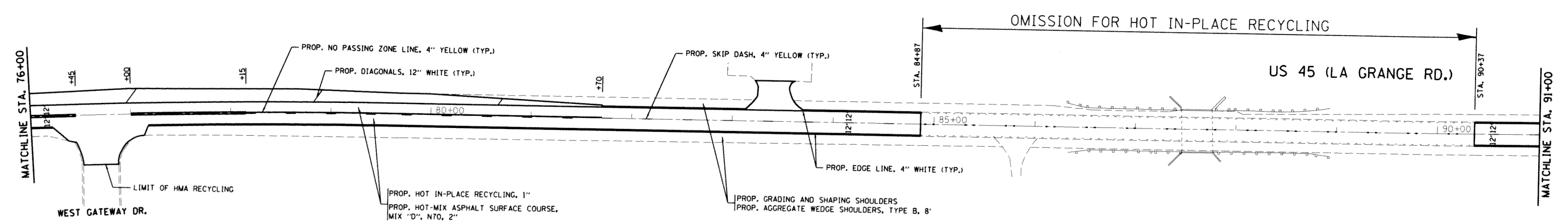
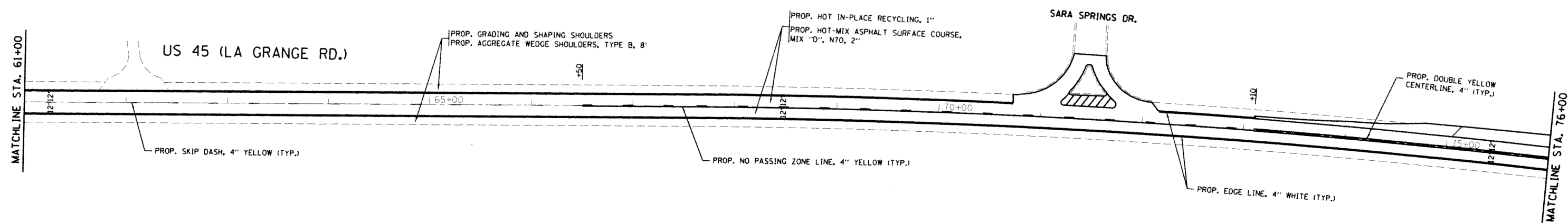
FILE NAME =	USER NAME = steedpa	DESIGNED -	REVISED -
c:\pw_work\p\dot\stedpa\08249543\013011-sht-plan.dgn		DRAWN -	REVISED -
PLOT SCALE = 100.0000 1/2 in.		CHECKED -	REVISED -
PLOT DATE = 1/31/2013		DATE -	REVISED -

**STATE OF ILLINOIS
DEPARTMENT OF TRANSPORTATION**

ROADWAY AND PAVEMENT MARKING PLAN
 F.A.P. 330/ US 45 (LA GRANGE RD.)--SAGER RD. TO STUENKAL RD.
 SCALE: 1"=50' SHEET NO. OF SHEETS STA. 31+00 TO STA. 61+00

F.A.P. RTE.	SECTION	COUNTY	TOTAL SHEETS	SHEET NO.
330	104-RS-10	WILL	20	8

CONTRACT NO. 60N32

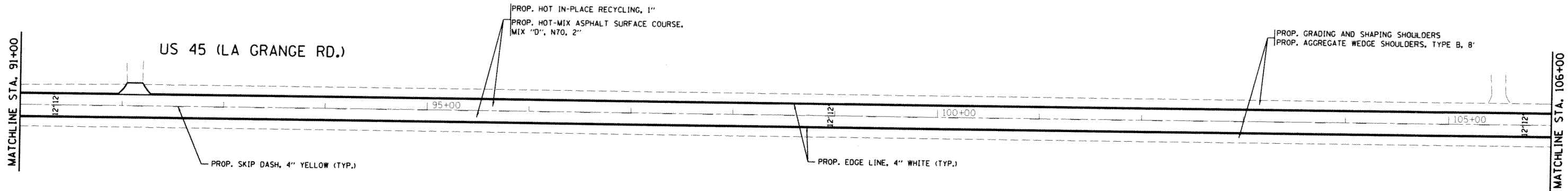


FILE NAME =	USER NAME = steedpa	DESIGNED -	REVISED -
0:\pw\work\p\rdot\stedpa\0249543\0130	11-shs-plan.dgn	DRAWN -	REVISED -
	PLOT SCALE = 100.0000 / in.	CHECKED -	REVISED -
	PLOT DATE = 1/31/2013	DATE -	REVISED -

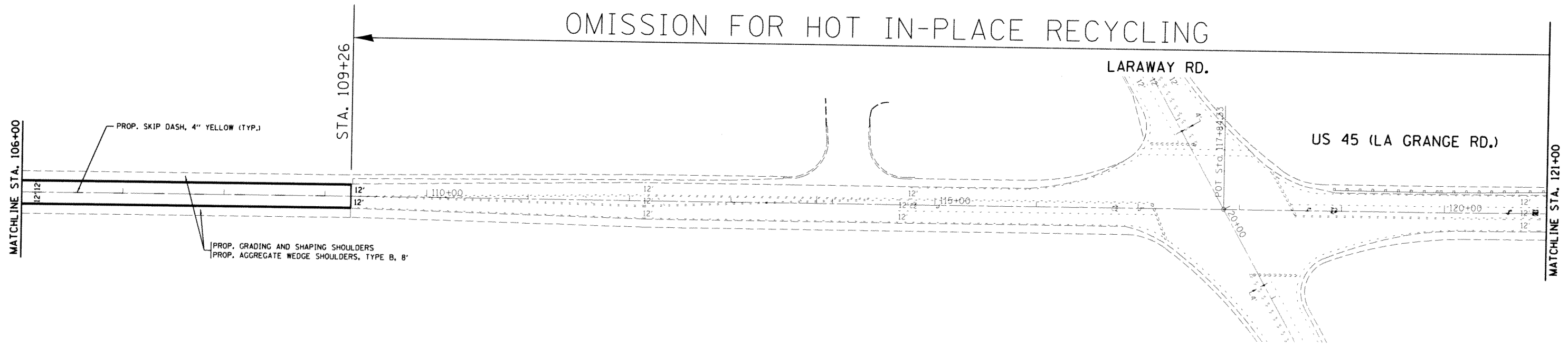
**STATE OF ILLINOIS
DEPARTMENT OF TRANSPORTATION**

ROADWAY AND PAVEMENT MARKING PLAN
F.A.P. 330/ US 45 (LA GRANGE RD.)--SAGER RD. TO STUENKAL RD.
SCALE: 1"=50' SHEET NO. OF SHEETS STA. 61+00 TO STA. 91+00

F.A.P. RTE.	SECTION	COUNTY	TOTAL SHEETS	SHEET NO.
330	104-RS-10	WILL	20	9
FED. ROAD DIST. NO. 1				CONTRACT NO. 60N32



OMISSION FOR HOT IN-PLACE RECYCLING



FILE NAME =	USER NAME = steedpa	DESIGNED -	REVISED -
g:\pw-work\p\idot\stedpa\0249543\0130	11-sht-plan.dgn	DRAWN -	REVISED -
	PLOT SCALE = 100.0000' / in.	CHECKED -	REVISED -
	PLOT DATE = 1/31/2013	DATE -	REVISED -

**STATE OF ILLINOIS
DEPARTMENT OF TRANSPORTATION**

ROADWAY AND PAVEMENT MARKING PLAN
F.A.P. 330/ US 45 (LA GRANGE RD.)--SAGER RD. TO STUENKAL RD.

F.A.P. RTE.	SECTION	COUNTY	TOTAL SHEETS	SHEET NO.
330	104-RS-10	WILL	20	10

SCALE: 1"=50' SHEET NO. OF SHEETS STA. 91+00 TO STA. 121+00

FED. ROAD DIST. NO. 1 ILLINOIS FED. AID PROJECT **CONTRACT NO. 60N32**

OMISSION FOR HOT IN-PLACE RECYCLING

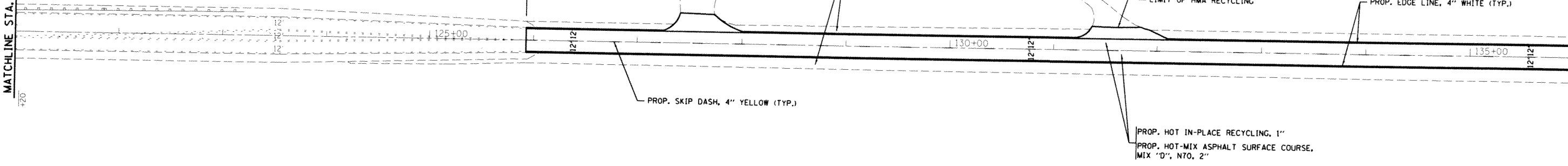


MATCHLINE STA. 121+00

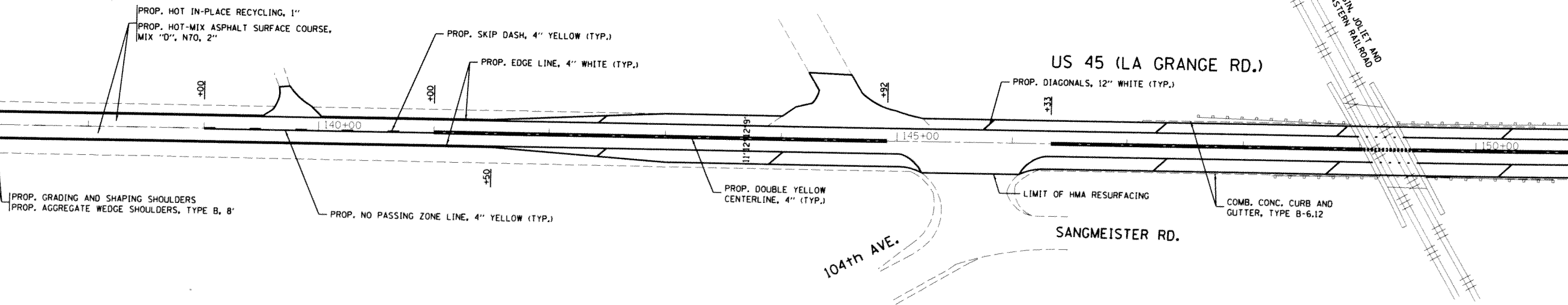
US 45 (LA GRANGE RD.)

STA. 125+93

MATCHLINE STA. 136+00



MATCHLINE STA. 136+00



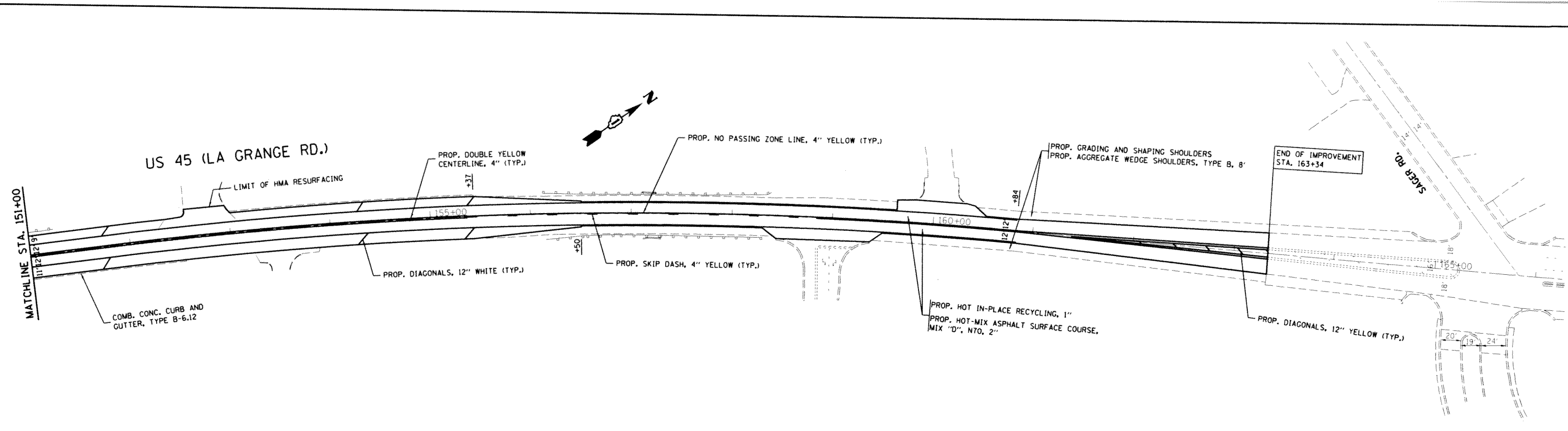
MATCHLINE STA. 151+00

FILE NAME =	USER NAME = steedpa	DESIGNED -	REVISED -
c:\pw\work\p1\dot\steadpa\d0249543\0130	11-shr-plan.dgn	DRAWN -	REVISED -
	PLOT SCALE = 100.0000 / in.	CHECKED -	REVISED -
	PLOT DATE = 1/31/2013	DATE -	REVISED -

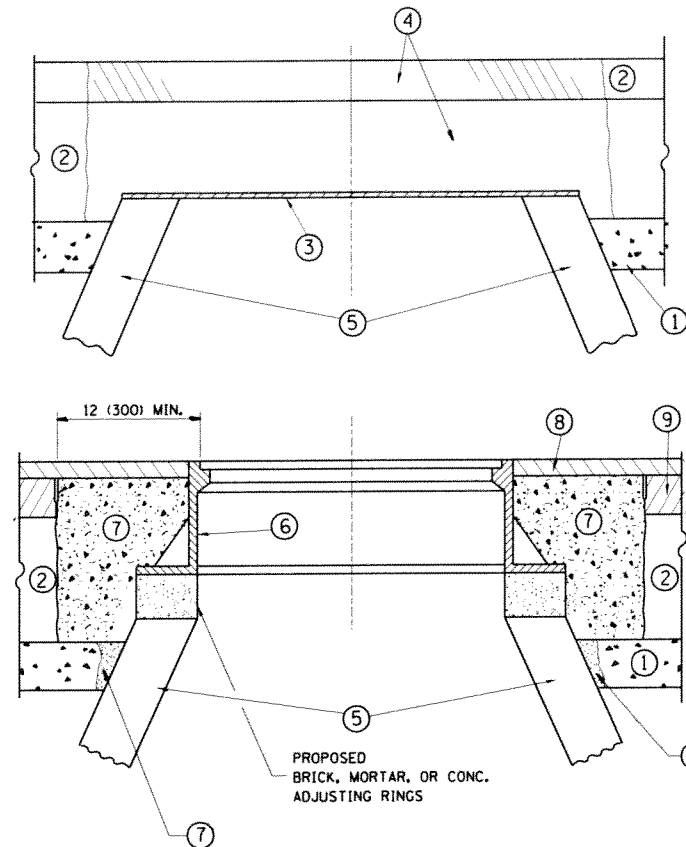
**STATE OF ILLINOIS
DEPARTMENT OF TRANSPORTATION**

ROADWAY AND PAVEMENT MARKING PLAN
F.A.P. 330/ US 45 (LA GRANGE RD.)--SAGER RD. TO STUENKAL RD.
 SCALE: 1"=50' SHEET NO. OF SHEETS STA. 121+00 TO STA. 151+00

F.A.P. RTE.	SECTION	COUNTY	TOTAL SHEETS	SHEET NO.
330	104-RS-10	WILL	20	11
CONTRACT NO. 60N32				
<small>FED. ROAD DIST. NO. 1 ILLINOIS FED. AID PROJECT</small>				



FILE NAME =	USER NAME = steedpa	DESIGNED -	REVISED -	STATE OF ILLINOIS DEPARTMENT OF TRANSPORTATION	ROADWAY AND PAVEMENT MARKING PLAN F.A.P. 330/ US 45 (LA GRANGE RD.)--SAGER RD. TO STUENKAL RD.		F.A.P. RTE.	SECTION	COUNTY	TOTAL SHEETS	SHEET NO.		
c:\pw\work\p\hidat\steedpa\d0249543\0130	11-shr:plon.dgn	DRAWN -	REVISED -				330	104-RS-10	WILL	20	12		
	PLOT SCALE = 100.0000 / in.	CHECKED -	REVISED -				CONTRACT NO. 60N32						
	PLOT DATE = 1/31/2013	DATE -	REVISED -										
					SCALE: 1"=50'	SHEET NO. OF SHEETS	STA. 151+00 TO STA. 163+33.5						



CONSTRUCTION PROCEDURES

STAGE 1 (BEFORE PAVEMENT MILLING)

- A) REMOVE A MINIMUM OF 12 (300) OF THE PAVEMENT FROM AROUND THE STRUCTURE.
- B) REMOVE THE EXISTING FRAME AND LID FROM THE STRUCTURE.
- C) COVER THE STRUCTURE OPENING WITH A 36 (900) DIAMETER METAL PLATE.
- D) BACKFILL WITH CRUSHED STONE AND A MINIMUM 1/2 (40) THICK HMA SURFACE MIX APPROVED BY THE ENGINEER.

STAGE 2 (AFTER PAVEMENT MILLING)

- A) REMOVE THE HMA SURFACE MIX AND CRUSHED STONE.
- B) INSTALL THE FRAME AND LID; ADJUST THE FRAME TO ITS FINAL SURFACE ELEVATION.
- C) THE SURROUNDING SPACE SHALL BE FILLED WITH CLASS PP-1* CONCRETE TO THE ELEVATION OF THE SURFACE OF THE EXISTING BASE COURSE OR THE BINDER COURSE.

* UNLESS OTHERWISE SPECIFIED IN THE PLANS.

THE PROCEDURE EXPLAINED ABOVE SHALL CONFORM TO THE APPLICABLE PORTIONS OF SECTIONS 353, 406, 602, AND 603 OF THE STANDARD SPECIFICATIONS EXCEPT THAT "THE CONTRACTOR SHALL ADJUST THE STRUCTURES TO THE FINISHED PAVEMENT ELEVATION NO MORE THAN 5 CALENDAR DAYS PRIOR TO PLACEMENT OF THE FINAL LIFT OF SURFACE UNLESS APPROVED BY THE ENGINEER."

LEGEND

- ① SUB-BASE GRANULAR MATERIAL
- ② EXISTING PAVEMENT
- ③ 36 (900) DIAMETER METAL PLATE
- ④ PROPOSED CRUSHED STONE AND HMA SURFACE MIX
- ⑤ EXISTING STRUCTURE
- ⑥ FRAME AND LID (SEE NOTES)
- ⑦ CLASS PP-1* CONCRETE
- ⑧ PROPOSED HMA SURFACE COURSE
- ⑨ PROPOSED HMA BINDER COURSE

LOCATION OF STRUCTURES:

THE CONTRACTOR WILL BE REQUIRED TO KEEP A RECORD OF THE LOCATIONS OF THE BURIED STRUCTURES ACCORDING TO THE STATION AND DISTANCE LEFT OR RIGHT OF THE CENTERLINE OF PAVEMENT. UPON COMPLETION OF THE WORK, THE CONTRACTOR WILL DELIVER THE RECORD TO THE ENGINEER.

BASIS OF PAYMENT:

REMOVING FRAMES AND LIDS ON DRAINAGE AND UTILITY STRUCTURES IN THE PAVEMENT PRIOR TO MILLING, AND ADJUSTING TO FINAL GRADE PRIOR TO PLACING THE SURFACE COURSE, WILL BE PAID FOR AT THE CONTRACT UNIT PRICE EACH FOR 'FRAMES AND LIDS TO BE ADJUSTED (SPECIAL)'

THIS WORK WILL NOT BE PAID FOR WHEN DRAINAGE AND UTILITY STRUCTURES ARE SPECIFIED FOR PAYMENT AS STRUCTURE RECONSTRUCTION.

NEW FRAMES AND LIDS, WHEN SPECIFIED, WILL BE PAID FOR SEPARATELY.

NOTES:

EXISTING BROKEN FRAMES AND LIDS SHALL BE REMOVED AND DISPOSED OF BY THE CONTRACTOR AND SHALL BE REPLACED AS DIRECTED BY THE ENGINEER. REPLACEMENT FRAMES AND LIDS WILL BE PAID FOR IN ACCORDANCE WITH ARTICLE 109.04 OF THE STANDARD SPECIFICATIONS UNLESS A SEPARATE PAY ITEM HAS BEEN PROVIDED.

IF THE EXISTING LIDS ARE OPEN, THE FRAME WILL BE ADJUSTED TO THE ELEVATION OF THE MILLED PAVEMENT SURFACE PRIOR TO THE MILLING OPERATION. THE FRAME WILL NOT BE REMOVED AND COVERED BY THE METAL PLATE.

CITY OF CHICAGO CASTINGS ARE THE PROPERTY OF THE CITY AND THE CONTRACTOR SHALL NOTIFY THE CITY FOR REMOVAL AND DISPOSITION OF THE CASTINGS.

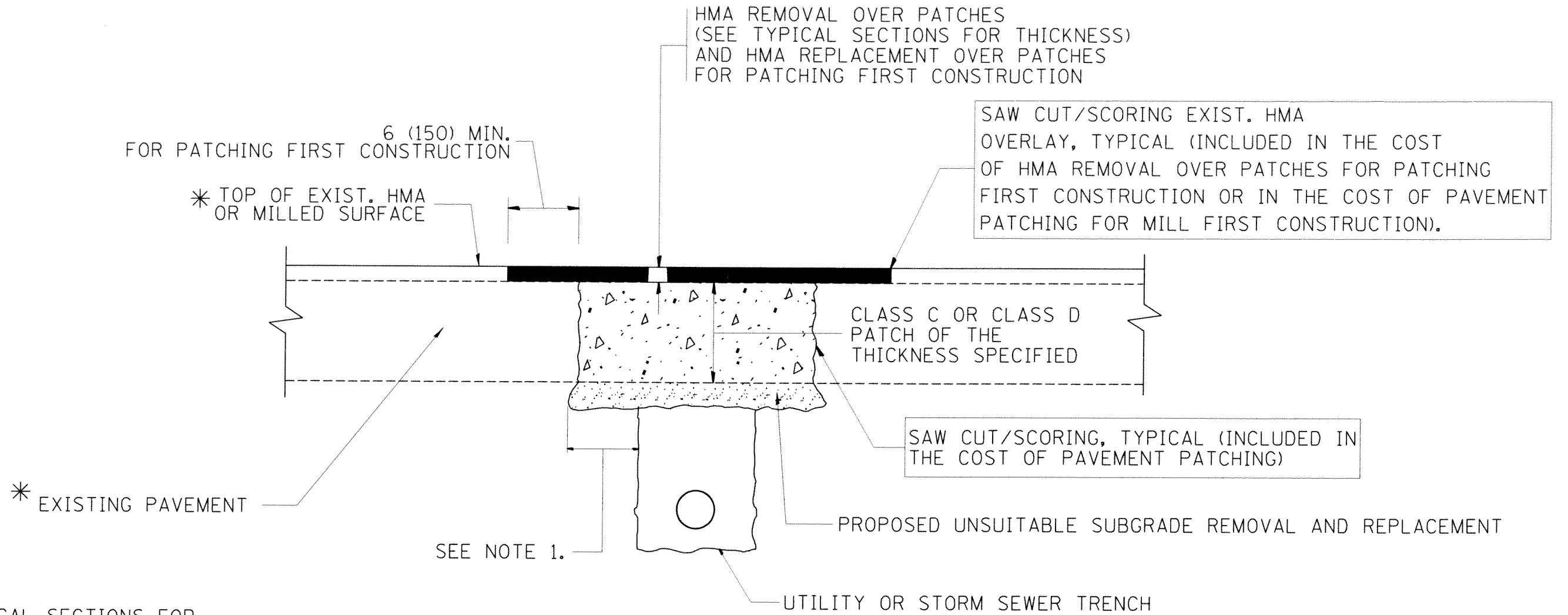
THE METAL PLATE USED TO COVER THE STRUCTURE SHALL REMAIN THE PROPERTY OF THE CONTRACTOR.

WHEN STRUCTURES ARE TO BE ADJUSTED OR RECONSTRUCTED, THE LOWERING AND RAISING OF THE FRAMES AND LIDS WILL NOT BE PAID FOR SEPARATELY BUT WILL BE INCLUDED IN THE COST OF THE CORRESPONDING PAY ITEM.

DETAILS FOR FRAMES AND LIDS ADJUSTMENT WITH MILLING

ALL DIMENSIONS ARE IN INCHES (MILLIMETERS) UNLESS OTHERWISE SHOWN

FILE NAME *	USER NAME * steedpa	DESIGNED - R. SHAH	REVISED - R. WIEDEMAN 05-14-04	STATE OF ILLINOIS DEPARTMENT OF TRANSPORTATION	DETAILS FOR FRAMES AND LIDS ADJUSTMENT WITH MILLING	F.A.I. RTE. 330	SECTION 104-RS-10	COUNTY WILL	TOTAL SHEETS 20	SHEET NO. 13	
cd:\pw\work\p\idat\stedpa\d0249543\01st	ed.dgn	DRAWN -	REVISED - R. BORO 01-01-07		SCALE: NONE	SHEET NO. 1 OF 1 SHEETS	STA.	TO STA.	BD600-03 (BD-8) CONTRACT NO. 60N32		
	PLOT SCALE * 100.0000 / in.	CHECKED -	REVISED - R. BORO 03-09-11		FED. ROAD DIST. NO. 1 ILLINOIS FED. AID PROJECT						
	PLOT DATE * 1/28/2013	DATE - 10-25-94	REVISED - R. BORO 12-06-11								



* SEE TYPICAL SECTIONS FOR THICKNESS AND MATERIALS

NOTES:

1. THE WIDTH OF THE FULL DEPTH PATCH OVER A TRENCH SHALL BE 12 (300) WIDER ON EACH SIDE OF THE TRENCH.
2. FOR METHOD OF MEASUREMENT AND BASIS OF PAYMENT, SEE RECURRING SPECIAL PROVISION "PATCHING WITH HOT-MIX ASPHALT OVERLAY REMOVAL".

SEQUENCE OF CONSTRUCTION (PATCHING FIRST)

1. REMOVE THE EXISTING HMA MATERIAL OVER THE AREA TO BE PATCHED.
2. REMOVE AND REPLACE WITH CLASS C OR D PATCH.
3. REPLACE HMA MATERIAL OVER THE AREA TO BE PATCHED.

SEQUENCE OF CONSTRUCTION (MILLING FIRST)

1. MILL HMA FIRST IF THERE IS AT LEAST 4 1/2 INCHES OR MORE OF HMA MATERIAL ON TOP OF THE EXISTING PAVEMENT OR IF THE PAVEMENT IS FULL DEPTH HMA. A MINIMUM OF 2 INCHES OF HMA MATERIAL SHALL BE IN PLACE AFTER MILLING.
2. REMOVE AND REPLACE WITH FULL DEPTH CLASS D PATCHES TO TOP OF MILLED SURFACE.

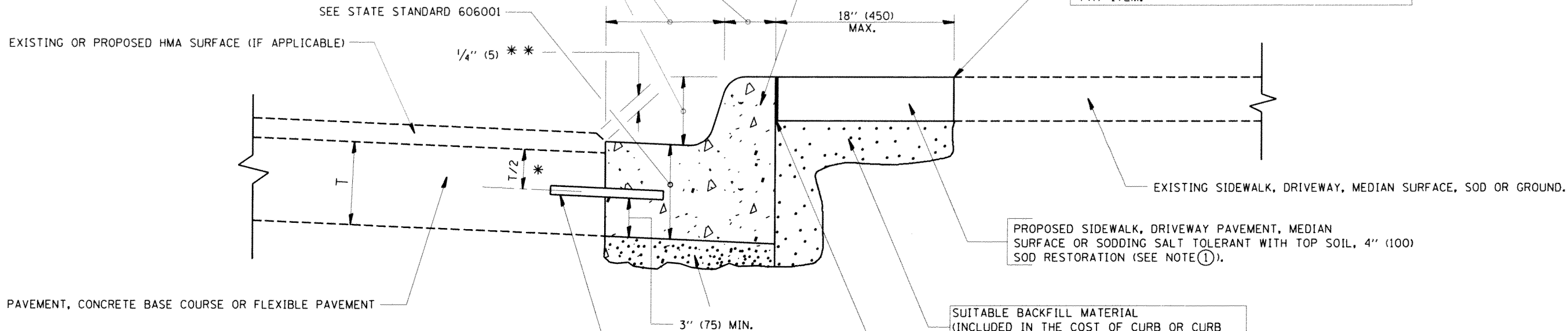
ALL DIMENSIONS ARE IN INCHES (MILLIMETERS) UNLESS OTHERWISE SHOWN.

FILE NAME =	USER NAME = steedpa	DESIGNED - R. SHAH	REVISED - A. ABBAS 04-27-98	STATE OF ILLINOIS DEPARTMENT OF TRANSPORTATION	PAVEMENT PATCHING FOR HMA SURFACED PAVEMENT	F.A.U. RTE.	SECTION	COUNTY	TOTAL SHEETS	SHEET NO.
cd:\pwork\pwork\stedpa\0249543\Dist	td.dgn	DRAWN -	REVISED - R. BORO 01-01-07			330	104-RS-10	WILL	20	14
	PLOT SCALE = 100.0000 1/ in.	CHECKED -	REVISED - R. BORO 09-04-07			BD400-04 (BD-22)		CONTRACT NO. 60N32		
	PLOT DATE = 1/28/2013	DATE - 10-25-94	REVISED - K. ENG 10-27-08			FED. ROAD DIST. NO. 1 ILLINOIS FED. AID PROJECT				
					SCALE: NONE	SHEET NO. 1 OF 1 SHEETS		STA. TO STA.		

VARIABLE - TO MEET EXISTING DIMENSIONS AND FIELD CONDITIONS (SEE NOTE ②)

PROP. CONC. CURB OR CURB AND GUTTER REPLACEMENT IN ACCORDANCE WITH STATE STANDARD 606001. (SEE NOTE ②)

SAW CUT FULL DEPTH - INCLUDED IN THE COST OF SIDEWALK, DRIVEWAY OR MEDIAN SURFACE REMOVAL PAY ITEM.



* 3" (75) MINIMUM FROM TOP AND BOTTOM OF THE CONCRETE PAVEMENT OR BASE COURSE.

* * IF THE FINAL SURFACE OF THE PAVEMENT IS CONCRETE, THE GUTTER IS TO BE FLUSH WITH THE PAVEMENT.

NOTE: ① SIDEWALK, DRIVEWAY PAVEMENT OR MEDIAN SURFACE SHALL BE SIMILAR TO THE MATERIAL BEING REMOVED AND WILL BE PAID FOR SEPARATELY.

SODDING, SALT TOLERANT AND TOP SOIL, FURNISH AND PLACE 4" WILL BE PAID FOR SEPARATELY.

② FERTILIZER FOR THE PLACEMENT OF THE SOD IS NOT REQUIRED

③ CURB OR CURB AND GUTTER REPLACEMENT SHALL MATCH THE SHAPE OF THE EXISTING CURB OR CURB AND GUTTER UNLESS OTHERWISE SPECIFIED.

④ FOR CURB OR CURB AND GUTTER REMOVAL AND REPLACEMENT ADJACENT TO FLEXIBLE PAVEMENT DELETE EPOXY COATED TIE BARS.

⑤ LONGITUDINAL BARS, IF ENCOUNTERED IN THE EXISTING CURB OR CURB AND GUTTER, ARE NOT TO BE REPLACED. CUTTING AND REMOVING LONGITUDINAL BARS SHALL BE INCLUDED IN THE COST OF CURB OR CURB AND GUTTER REMOVAL AND REPLACEMENT.

⑥ THE COST OF HMA SURFACE REMOVAL IN THE EXISTING GUTTER FLAG SHALL BE INCLUDED IN THE COST OF THE CURB AND GUTTER REMOVAL AND REPLACEMENT.

⑦ THE REMOVAL AND REPLACEMENT OF THE EXISTING CURB OR CURB AND GUTTER SHALL BE DONE IN ACCORDANCE WITH THE APPLICABLE PORTIONS OF SECTION 440 AND 606 OF THE STANDARD SPECIFICATIONS.

⑧ THE LOCATIONS OF REMOVAL AND REPLACEMENT OF EXISTING CURB OR CURB AND GUTTER SHALL BE DETERMINED BY THE RESIDENT ENGINEER AT THE TIME OF CONSTRUCTION.

SUITABLE BACKFILL MATERIAL (INCLUDED IN THE COST OF CURB OR CURB AND GUTTER REMOVAL AND REPLACEMENT)

PROPOSED 3/4" (20) PREFORMED EXPANSION JOINT AT CONCRETE SIDEWALKS, DRIVEWAYS, AND MEDIANS. (INCLUDED IN THE COST OF CURB OR CURB AND GUTTER REMOVAL AND REPLACEMENT.)

UNSUITABLE SUB-BASE MATERIAL TO BE REMOVED, IF DIRECTED BY THE ENGINEER, SHALL BE REPLACED WITH EITHER SUB-BASE GRANULAR MATERIAL, TYPE B OR ADDITIONAL THICKNESS OF CONCRETE.

REMOVAL AND REPLACEMENT 4" (100) OR LESS IS INCLUDED IN THE COST OF CURB OR CURB AND GUTTER REMOVAL AND REPLACEMENT.

REMOVAL AND REPLACEMENT IN EXCESS OF 4" (100) WILL BE PAID FOR IN ACCORDANCE WITH ARTICLE 109.04 OF THE STANDARD SPECIFICATIONS.

PROPOSED #6 (20) EPOXY COATED TIE BARS 24" (600) LONG AT 24" (600) CENTERS WILL NOT BE PAID FOR SEPARATELY. DELETE EPOXY COATED TIE BARS IF EXISTING TIE BARS ARE USUABLE AS DETERMINED BY THE ENGINEER. (SEE NOTE ③).

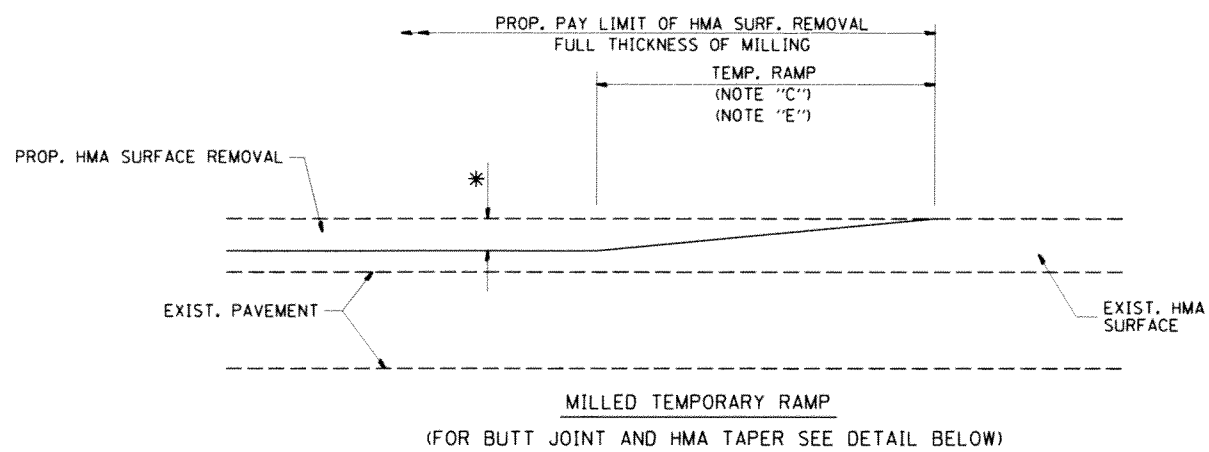
BASIS OF PAYMENT:

THIS WORK WILL BE PAID FOR AT THE CONTRACT UNIT PRICE PER FOOT (METER) FOR "CURB REMOVAL AND REPLACEMENT" OR "COMBINATION CONCRETE CURB AND GUTTER REMOVAL AND REPLACEMENT".

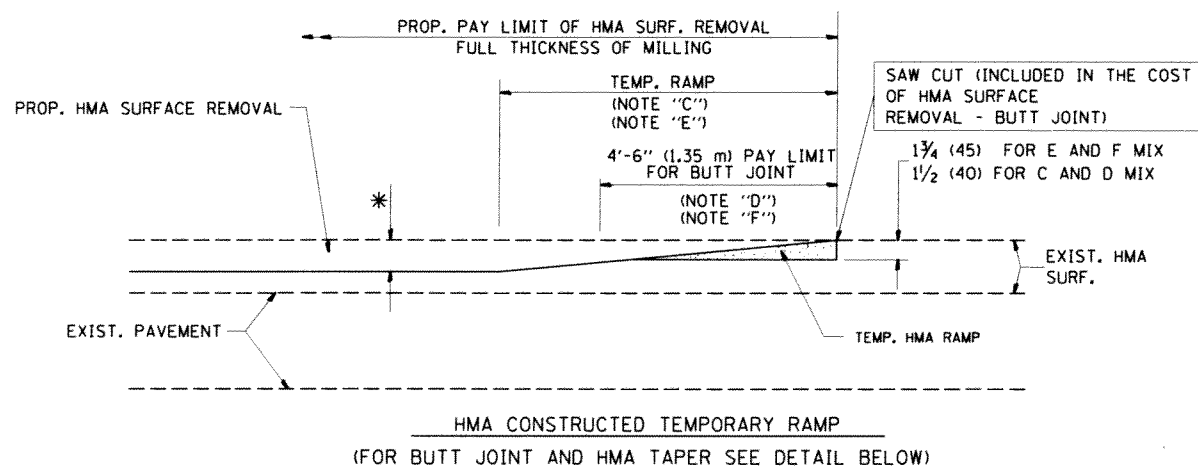
CURB OR CURB AND GUTTER REMOVAL AND REPLACEMENT

ALL DIMENSIONS ARE IN INCHES (MILLIMETERS) UNLESS OTHERWISE SHOWN.

FILE NAME =	USER NAME = steedpa	DESIGNED - A. HOUSEH	REVISED - R. SHAH 10-03-96	STATE OF ILLINOIS DEPARTMENT OF TRANSPORTATION	CURB OR CURB AND GUTTER REMOVAL AND REPLACEMENT	F.A.J. RTE.	SECTION	COUNTY	TOTAL SHEETS	SHEET NO.	
cd:\pw\work\pwidot\stedpa\0249543\1\st	td.dgn	DRAWN -	REVISED - A. ABBAS 03-21-97			330	104-RS-10	WILL	20	15	
	PLOT SCALE = 100.0000" = 1"	CHECKED -	REVISED - M. GOMEZ 01-22-01			BD600-06 (BD-24)		CONTRACT NO. 60N32			
	PLOT DATE = 1/28/2013	DATE - 03-11-94	REVISED - R. BORO 12-15-09			FED. ROAD DIST. NO. 1 ILLINOIS FED. AID PROJECT					
					SCALE: NONE	SHEET NO. 1 OF 1 SHEETS		STA.	TO STA.		

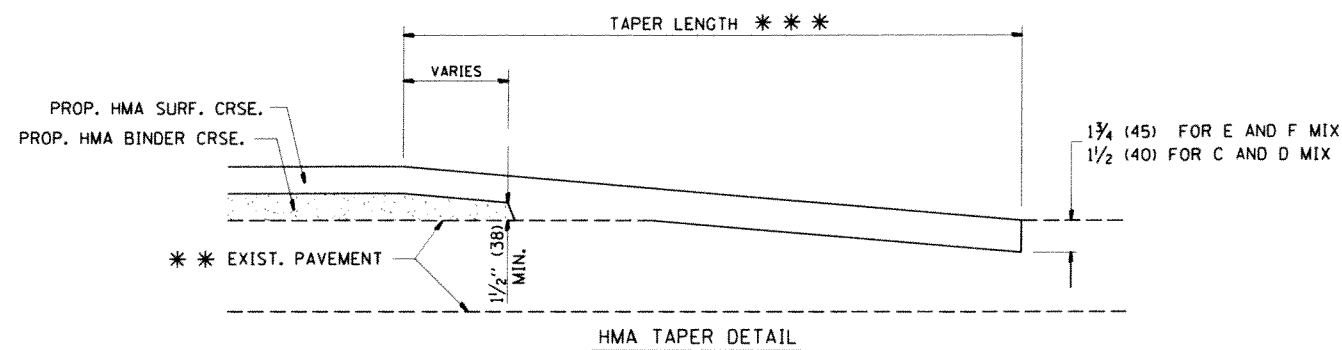
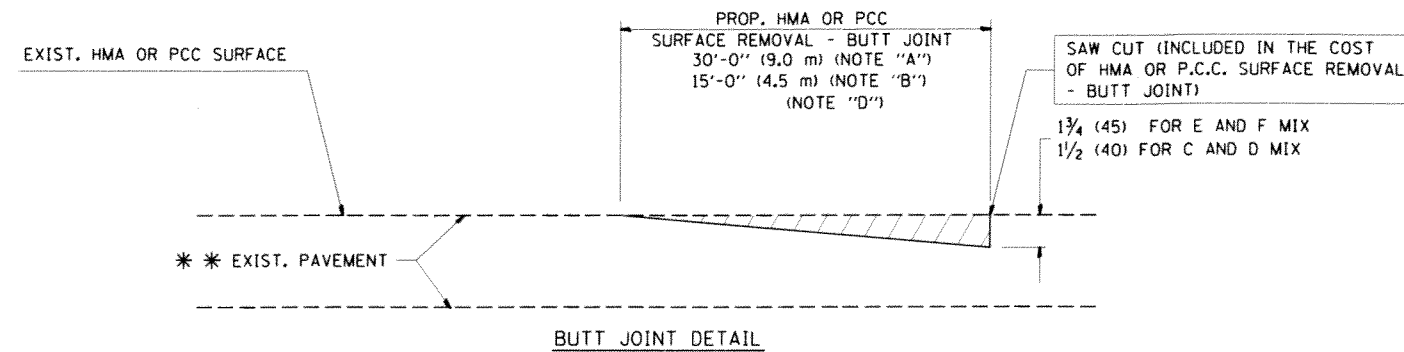


OPTION 1



OPTION 2

TYPICAL TEMPORARY RAMP



TYPICAL BUTT JOINT AND HMA TAPER FOR RESURFACING ONLY

* * * PC CONCRETE, HMA OR HMA RESURFACED PAVEMENT.

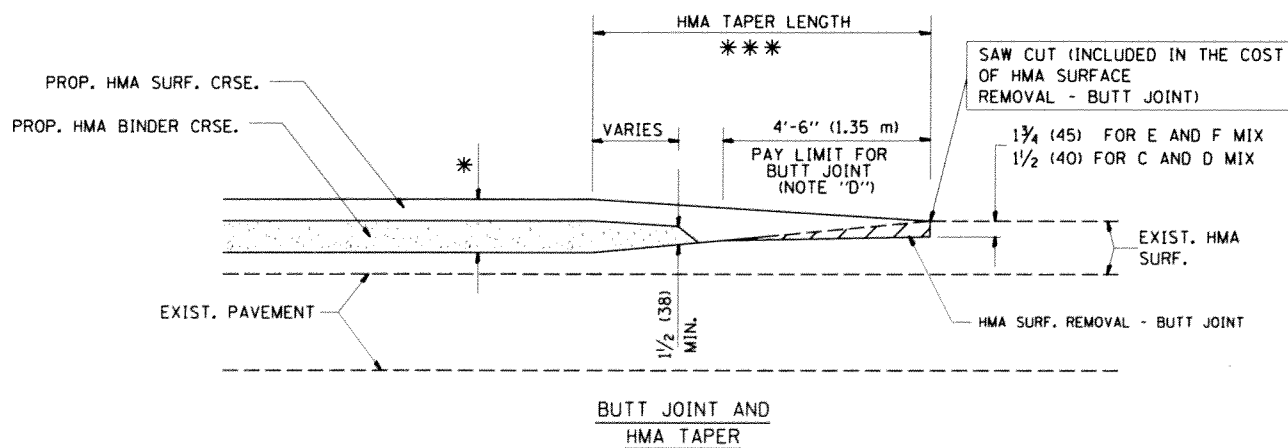
NOTES

- A: MAINLINE ROADWAYS AND MAJOR SIDE ROADS.
- B: MINOR SIDE ROADS.
- C: THE TEMP. RAMP SHALL BE CONSTRUCTED IMMEDIATELY UPON REMOVAL OF THE EXISTING HMA SURFACE.
- D: THE BUTT JOINT SHALL BE CONSTRUCTED IMMEDIATELY PRIOR TO PLACING THE PROPOSED HMA COURSES.
- E: TAPER THE TEMP. RAMP AT A RATE OF 3'-0" (900 mm) PER 1 INCH (25 mm) OF MILLING THICKNESS.
- F: INSTALLATION AND REMOVAL OF THE 4'-6" (1.35 m) TEMP. RAMP IS INCLUDED IN COST OF HMA SURFACE REMOVAL - BUTT JOINT
- G: SEE ARTICLE 406.08 AND 406.14 OF THE STANDARD SPECIFICATIONS FOR "HMA AND/OR PCC SURFACE REMOVAL, BUTT JOINT".
- * SEE TYPICAL SECTIONS FOR MILLING THICKNESS.
- * * * 20'-0" (6.1 m) PER 1 (25) RESURFACING (NOTE "A")
10'-0" (3.0 m) PER 1 (25) RESURFACING (NOTE "B")

BASIS OF PAYMENT:

THE BUTT JOINT WILL BE PAID FOR AT THE CONTRACT UNIT PRICE PER SQUARE YARD (SQUARE METER) FOR "HOT-MIX ASPHALT SURFACE REMOVAL - BUTT JOINT" OR FOR "PORTLAND CEMENT CONCRETE SURFACE REMOVAL - BUTT JOINT".

ALL DIMENSIONS ARE IN INCHES (MILLIMETERS) UNLESS OTHERWISE SHOWN.



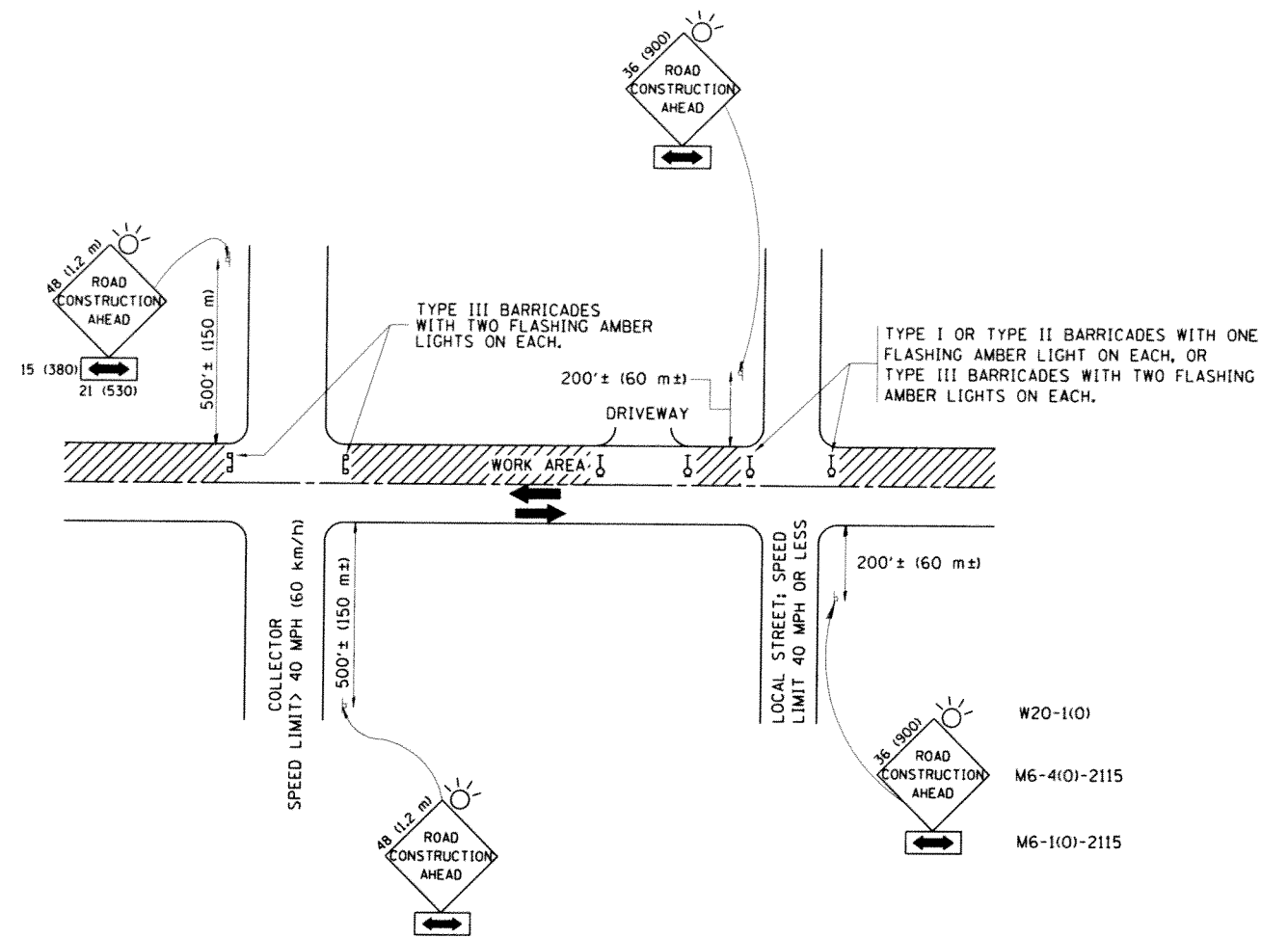
TYPICAL BUTT JOINT AND HMA TAPER FOR MILLING AND RESURFACING

FILE NAME	USER NAME	DESIGNED	REVISED
cd:\work\p\dot\stedpa\0249543\01st	stedpa	M. DE YONG	R. SHAH 10-25-94
		DRAWN	REVISED
		A. ABBAS	03-21-97
		CHECKED	REVISED
		M. GOMEZ	04-06-01
		DATE	REVISED
		06-13-90	R. BORO 01-01-07

**STATE OF ILLINOIS
DEPARTMENT OF TRANSPORTATION**

BUTT JOINT AND HMA TAPER DETAILS	
SCALE: NONE	SHEET NO. 1 OF 1 SHEETS
STA.	TO STA.

F.A.U. RTE.	SECTION	COUNTY	TOTAL SHEETS	SHEET NO.
330	104-RS-10	WILL	20	16
BD400-05 BD32		CONTRACT NO. 60N32		
FED. ROAD DIST. NO. 1 ILLINOIS FED. AID PROJECT				



TRAFFIC CONTROL AND PROTECTION FOR SIDE ROADS, INTERSECTIONS, AND DRIVEWAYS

NOTES:

A. FOR NO LANE RESTRICTION ON THE SIDE ROAD OR DRIVEWAYS

1. SIDE ROAD WITH A SPEED LIMIT OF 40 MPH (60 km/h) OR LESS AS SHOWN ON THE DRAWING AND AS DIRECTED BY THE ENGINEER:
 - a) ONE ROAD CONSTRUCTION AHEAD SIGN 36 x 36 (900x900) WITH A FLASHER AND FLAG MOUNTED ON IT APPROXIMATELY 200' (60 m) IN ADVANCE OF THE MAIN ROUTE.
 - b) THE CLOSED PORTION OF THE MAIN ROUTE SHALL BE PROTECTED BY BLOCKING WITH TYPE I, TYPE II OR TYPE III BARRICADES, 1/3 OF THE CROSS SECTION OF THE CLOSED PORTION.
2. SIDE ROAD WITH A SPEED LIMIT GREATER THAN 40 MPH (60 km/h) AS SHOWN ON THE DRAWING AND AS DIRECTED BY THE ENGINEER:
 - a) ONE ROAD CONSTRUCTION AHEAD SIGN 48 x 48 (1.2 m x 1.2 m) WITH A FLASHER MOUNTED ON IT APPROXIMATELY 500' (150 m) IN ADVANCE OF THE MAIN ROUTE.
 - b) THE CLOSED PORTION OF THE MAIN ROUTE SHALL BE PROTECTED BY BLOCKING WITH TYPE III BARRICADES, 1/2 OF THE CROSS SECTION OF THE CLOSED PORTION.
3. WHEN THE SIDE ROAD LIES BETWEEN THE BEGINNING OF THE MAINLINE SIGNING AND THE WORK ZONE, A SINGLE HEADED ARROW (M6-1) SHALL BE USED IN LIEU OF THE DOUBLE HEADED ARROW (M6-4).

B. FOR A LANE CLOSURE ON A SIDE ROAD OR DRIVEWAY:

- USE APPLICABLE PORTIONS OF THE TYPICAL APPLICATION OF TRAFFIC CONTROL DEVICES (STD. 701501, STD. 701606 OR THE APPROPRIATE STANDARD). THE SPACING OF SIGNS AND BARRICADES SHALL BE ADJUSTED FOR FIELD CONDITIONS AS DIRECTED BY THE ENGINEER. THE DIRECTIONAL ARROW SHALL BE COVERED OR REMOVED WHEN NO LONGER CONSISTENT WITH THE SIDE ROAD LANE CLOSURE.
- C. ADVANCE WARNING SIGNS ARE TO BE OMITTED ON DRIVEWAY UNLESS OTHERWISE NOTED.
 - D. THE TRAFFIC CONTROL AND PROTECTION FOR SIDE ROADS, INTERSECTIONS, AND DRIVEWAYS SHALL BE INCIDENTAL TO THE COST OF SPECIFIED TRAFFIC CONTROL STANDARDS OR ITEMS.

All dimensions are in millimeters (inches) unless otherwise shown.

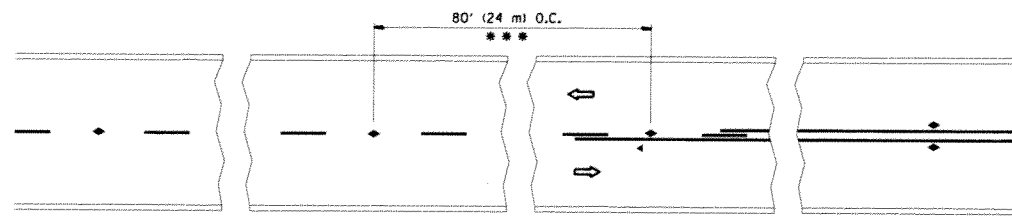
FILE NAME =	USER NAME = steedpa	DESIGNED - LHA	REVISED - J. OBERLE 10-18-95
c:\pwwork\pwsdot\stedpa\d0249543\Dist		DRAWN -	REVISED - A. HOUSEH 03-06-96
		CHECKED -	REVISED - A. HOUSEH 10-15-96
		DATE - 06-89	REVISED - T. RAMMACHER 01-06-00

**STATE OF ILLINOIS
DEPARTMENT OF TRANSPORTATION**

**TRAFFIC CONTROL AND PROTECTION FOR
SIDE ROADS, INTERSECTIONS, AND DRIVEWAYS**

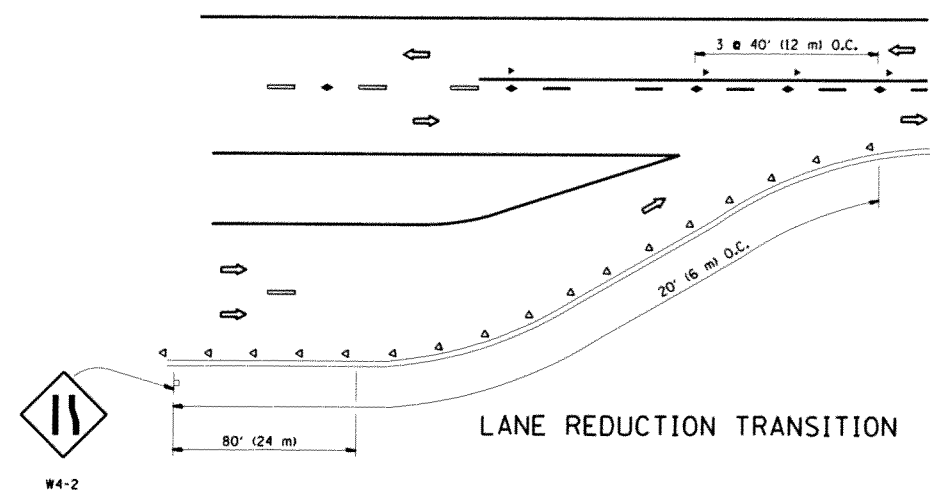
SCALE: NONE SHEET NO. 1 OF 1 SHEETS STA. TO STA.

F.A.U. RTE.	SECTION	COUNTY	TOTAL SHEETS	SHEET NO.
330	104-RS-10	WILL	20	17
TC-10			CONTRACT NO. 60N32	
FED. ROAD DIST. NO. 1 ILLINOIS FED. AID PROJECT				

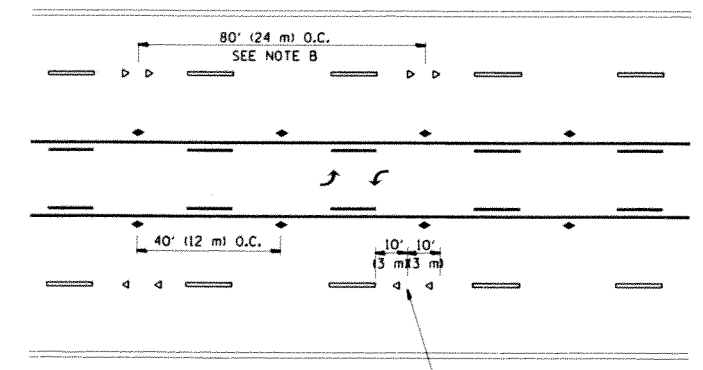


*** REDUCE TO 40' (12 m) O.C. ON CURVES WITH POSTED OR ADVISORY SPEED 45 M.P.H. (70 km/h) OR LESS.

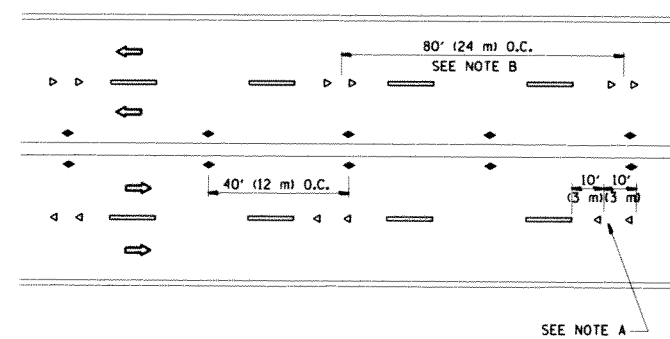
TWO-LANE/TWO-WAY



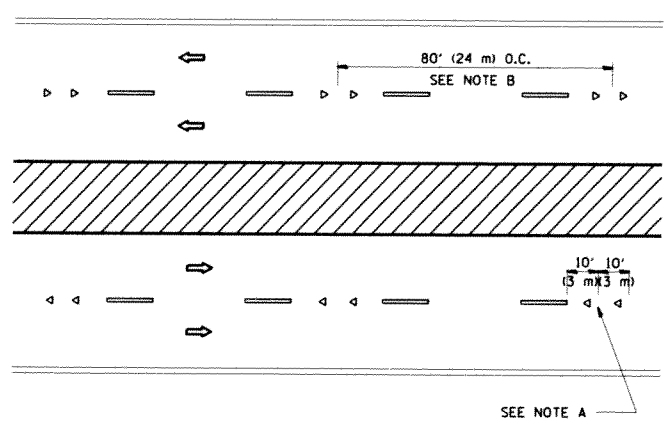
LANE REDUCTION TRANSITION



TWO-WAY LEFT TURN



MULTI-LANE/UNDIVIDED



MULTI-LANE/DIVIDED

GENERAL NOTES

1. MARKERS USED WITH DASHED LINES SHALL BE CENTERED IN THE GAP BETWEEN SEGMENTS.
2. MARKERS USED ADJACENT TO SOLID LINES SHALL BE OFFSET 2 TO 3 (50 TO 75) TOWARD TRAFFIC AS SHOWN.
3. MARKERS THROUGH TANGENTS LESS THAN 500' (150 m) IN LENGTH BETWEEN CURVES SHALL BE INSTALLED AT THE LESSER OF THE TWO CURVE SPACINGS.

SYMBOLS

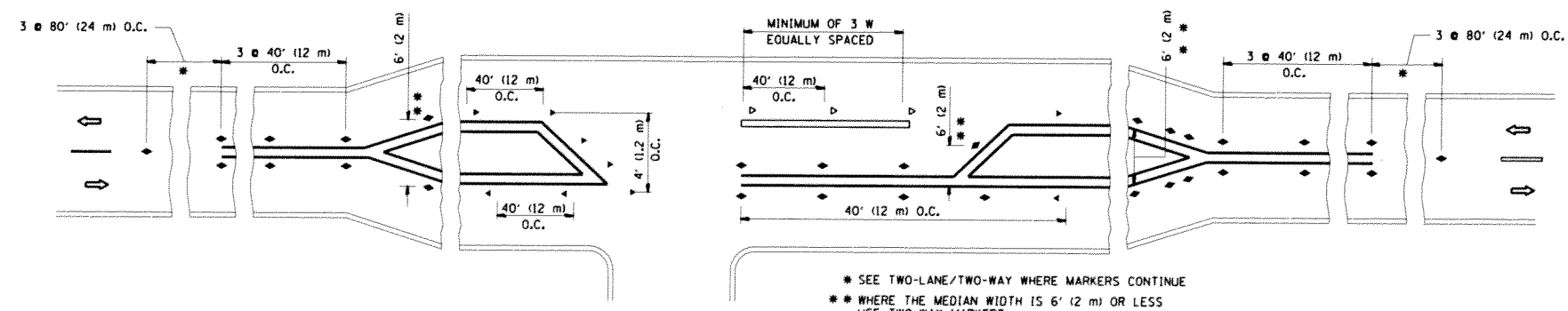
- YELLOW STRIPE
- WHITE STRIPE
- ◀ ONE-WAY AMBER MARKER
- ◀ ONE-WAY CRYSTAL MARKER (W/O)
- ◆ TWO-WAY AMBER MARKER

LANE MARKER NOTES

- A. USE DOUBLE LANE LINE MARKERS SPACED AS SHOWN.
- B. REDUCE TO 40' (12 m) O.C. ON CURVES WHERE ADVISORY SPEEDS ARE 10 M.P.H (20 km/h) LOWER THAN POSTED SPEEDS.

DESIGN NOTES

1. DOUBLE LANE LINE MARKERS SHALL BE USED UNLESS SPECIFIED OTHERWISE.
2. EXCEPT AS SHOWN ON THE LANE REDUCTION TRANSITION AND FREEWAY EXIT RAMP DETAIL, MARKERS ARE NOT TO BE SPECIFIED ON RIGHT EDGE LINES.
3. THE EXACT MARKER LIMITS, SPACING, AND COLOR SHALL BE INCLUDED IN THE PLANS WHEN STANDARD SPECIFICATIONS ARE NOT BEING USED.
4. MARKERS SHOULD NOT BE USED ALONGSIDE CURBS EXCEPT FOR EXTREMELY SHORT SECTIONS OF CURBS WHERE NOT MORE THAN TWO MARKERS WOULD BE INVOLVED.

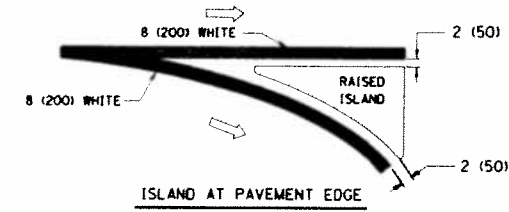
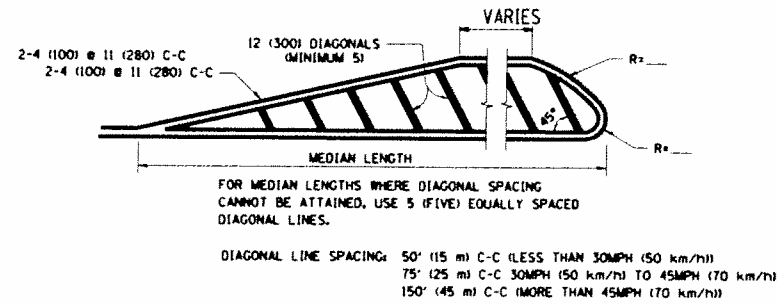
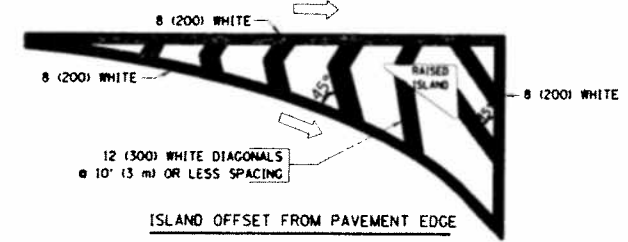
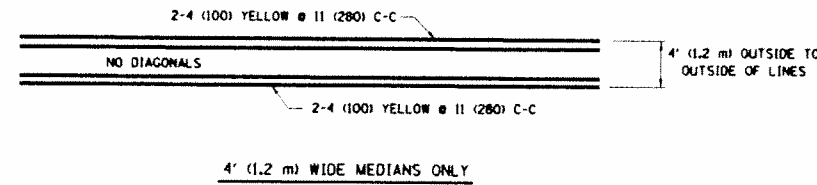
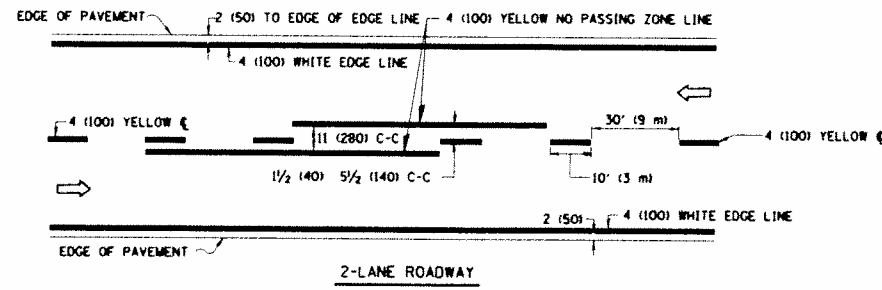


LEFT TURN

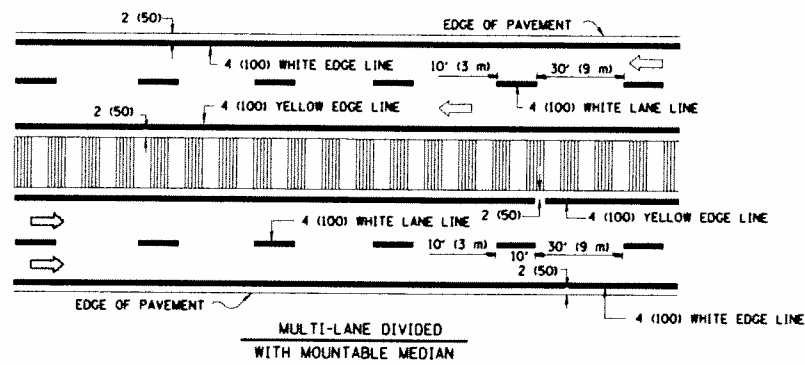
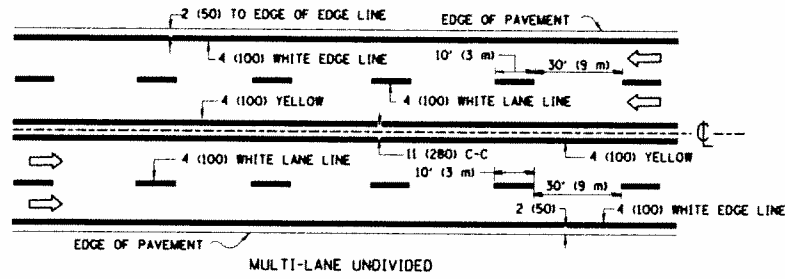
* SEE TWO-LANE/TWO-WAY WHERE MARKERS CONTINUE
 ** WHERE THE MEDIAN WIDTH IS 6' (2 m) OR LESS USE TWO-WAY MARKERS.

All dimensions are in inches (millimeters) unless otherwise shown.

FILE NAME =	USER NAME = steedpa	DESIGNED -	REVISED - T. RAMMACHER 09-19-94	STATE OF ILLINOIS DEPARTMENT OF TRANSPORTATION	TYPICAL APPLICATIONS			F.A.U. RTE.	SECTION	COUNTY	TOTAL SHEETS	SHEET NO.
ca:\pwork\pwork\stedpa\0249543\Dist\td.dgn	PLOT SCALE = 100.0000' / in.	DRAWN -	REVISED - T. RAMMACHER 03-12-99		RAISED REFLECTIVE PAVEMENT MARKERS (SNOW-PLOW RESISTANT)			330	104-R5-10	WILL	20	18
	PLOT DATE = 1/28/2013	CHECKED -	REVISED - T. RAMMACHER 01-06-00		SCALE: NONE	SHEET NO. 1 OF 1 SHEETS	STA.	TO STA.	TC-11		CONTRACT NO. 60N32	
		DATE -	REVISED - C. JUCIUS 09-09-09		FED. ROAD DIST. NO. 1 ILLINOIS FED. AID PROJECT							

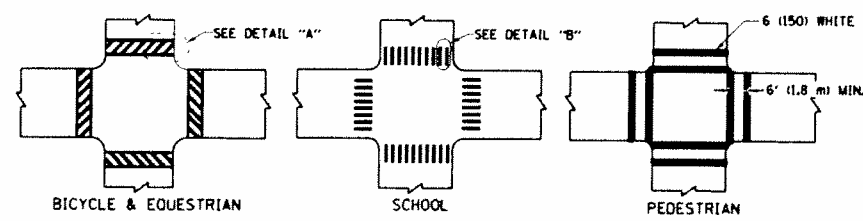


TYPICAL ISLAND MARKING

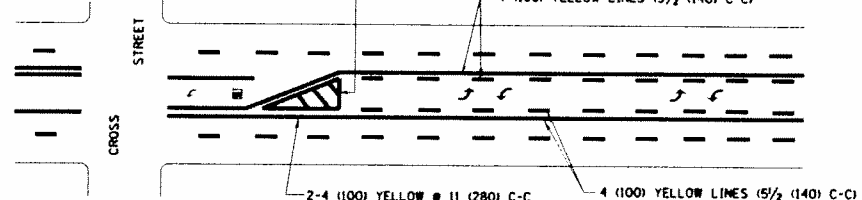


NOTE: MEDIANS WITH BARRIER CURB DO NOT REQUIRE AN EDGE LINE

TYPICAL LANE AND EDGE LINE MARKING



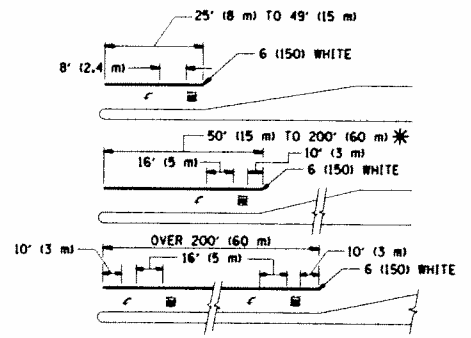
TYPICAL CROSSWALK MARKING



A MINIMUM OF TWO PAIRS OF TURN ARROWS SHALL BE USED, WHITE IN COLOR. ADDITIONAL PAIRS SHALL BE PLACED AT 200' (60 m) TO 300' (90 m) INTERVALS.



TYPICAL PAINTED MEDIAN MARKING



FULL SIZE LETTERS 8' (2.4 m) AND ARROWS SHALL BE USED.
* TURN LANES IN EXCESS OF 400' (120 m) IN LENGTH MAY HAVE AN ADDITIONAL SET OF ARROW - "ONLY" INSTALLED MIDWAY BETWEEN THE OTHER TWO SETS OF ARROW - "ONLY".

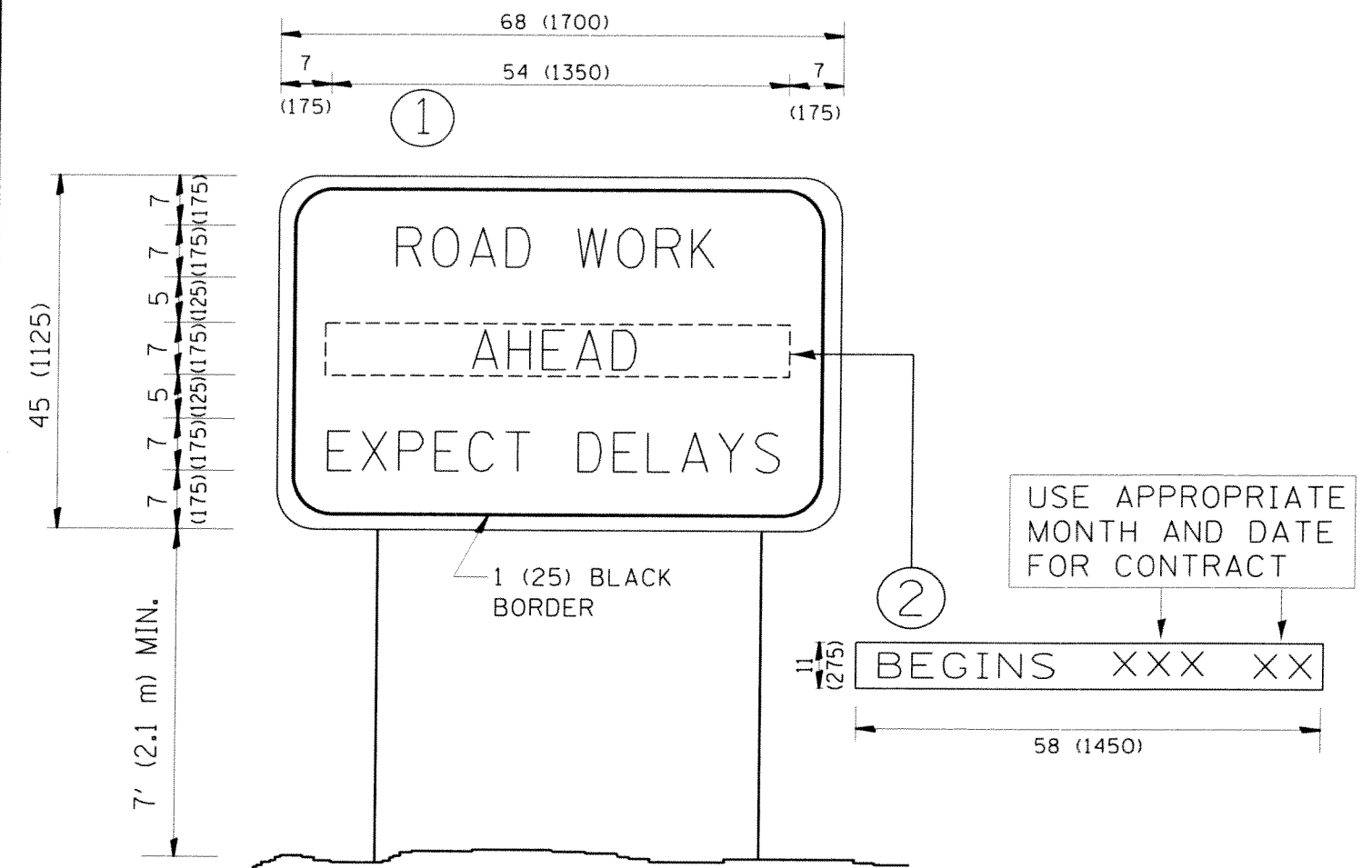
TYPICAL LEFT (OR RIGHT) TURN LANE

TYPICAL TURN LANE MARKING

TYPE OF MARKING	WIDTH OF LINE	PATTERN	COLOR	SPACING / REMARKS
CENTERLINE ON 2 LANE PAVEMENT	4 (100)	SKIP-DASH	YELLOW	10' (3 m) LINE WITH 30' (9 m) SPACE
CENTERLINE ON MULTI-LANE UNDIVIDED PAVEMENT	2 @ 4 (100)	SOLID	YELLOW	11 (280) C-C
NO PASSING ZONE LINES: FOR ONE DIRECTION	4 (100)	SOLID	YELLOW	5/2 (140) C-C FROM SKIP-DASH CENTERLINE
NO PASSING ZONE LINES: FOR BOTH DIRECTIONS	2 @ 4 (100)	SOLID	YELLOW	11 (280) C-C OMIT SKIP-DASH CENTERLINE BETWEEN
LANE LINES	4 (100)	SKIP-DASH	WHITE	10' (3 m) LINE WITH 30' (9 m) SPACE
LANE LINES	5 (125) ON FREEWAYS	SKIP-DASH	WHITE	
DOTTED LINES (EXTENSIONS OF CENTER, LANE OR TURN LANE MARKINGS)	SAME AS LINE BEING EXTENDED	SKIP-DASH	SAME AS LINE BEING EXTENDED	2' (600) LINE WITH 6' (1.8 m) SPACE
EDGE LINES	4 (100)	SOLID	YELLOW-LEFT WHITE-RIGHT	OUTLINE MOUNTABLE MEDIANS IN YELLOW; EDGE LINES ARE NOT USED NEXT TO BARRIER CURB
TURN LANE MARKINGS	6 (150) LINES; FULL SIZE LETTERS & SYMBOLS 16' (2.4m)	SOLID	WHITE	SEE TYPICAL TURN LANE MARKING DETAIL
TWO WAY LEFT TURN MARKING	2 @ 4 (100) EACH DIRECTION	SKIP-DASH AND SOLID IN PAIRS	YELLOW	10' (3 m) LINE WITH 30' (9 m) SPACE FOR SKIP-DASH; 5/2 (140) C-C BETWEEN SOLID LINE AND SKIP-DASH LINE
TWO WAY LEFT TURN MARKING	8' (2.4m) LEFT ARROW		WHITE	SEE TYPICAL TWO-WAY LEFT TURN MARKING DETAIL
CROSSWALK LINES (PEDESTRIAN)	2 @ 6 (150)	SOLID	WHITE	NOT LESS THAN 6' (1.8 m) APART
CROSSWALK LINES (BIKE & EQUESTRIAN)	12 (300) @ 45°	SOLID	WHITE	2' (600) APART
CROSSWALK LINES (LONGITUDINAL BARS (SCHOOL))	12 (300) @ 90°	SOLID	WHITE	2' (600) APART
STOP LINES	24 (600)	SOLID	WHITE	SEE TYPICAL CROSSWALK MARKING DETAILS.
PAINTED MEDIANS	2 @ 4 (100) WITH 12 (300) DIAGONALS @ 45°	SOLID	YELLOW; TWO WAY TRAFFIC WHITE; ONE WAY TRAFFIC	11 (280) C-C FOR THE DOUBLE LINE. SEE TYPICAL PAINTED MEDIAN MARKING.
GORE MARKING AND CHANNELIZING LINES	8 (200) WITH 12 (300) DIAGONALS @ 45°	SOLID	WHITE	DIAGONALS: 15' (4.5 m) C-C (LESS THAN 30MPH (50 km/h)) 20' (6 m) C-C 30MPH (50 km/h) TO 45MPH (70 km/h) 30' (9 m) C-C (OVER 45MPH (70 km/h))
RAILROAD CROSSING	24 (600) TRANSVERSE LINES; "RR" IS 6' (1.8 m) LETTERS; 16 (400) LINE FOR "X"	SOLID	WHITE	SEE STATE STANDARD 780001 AREA OF: "R"=3.6 SQ. FT. (0.33 m ²) EACH "X"=54.0 SQ. FT. (5.0 m ²)
SHOULDER DIAGONALS	12 (300) @ 45°	SOLID	WHITE - RIGHT YELLOW - LEFT	50' (15 m) C-C (LESS THAN 30MPH (50 km/h)) 75' (25 m) C-C (30 MPH (50 km/h) TO 45MPH (70 km/h)) 150' (45 m) C-C (OVER 45MPH (70 km/h))

FOR FURTHER DETAILS ON PAVEMENT MARKING REFER TO STANDARD SPECIFICATIONS FOR ROAD AND BRIDGE CONSTRUCTION AND STATE STANDARD 780001.

All dimensions are in inches (millimeters) unless otherwise shown.



NOTES:

1. USE BLACK LETTERING ON ORANGE BACKGROUND.
2. ERECT SIGNS IN ADVANCE OF THE LOCATION FOR THE "ROAD CONSTRUCTION AHEAD" SIGN AT LOCATIONS AS DIRECTED BY THE ENGINEER.
3. ERECT SIGN ① WITH INSTALLED PANEL ② ONE WEEK PRIOR TO THE START OF CONSTRUCTION.
4. REMOVE PANEL ② SOON AFTER THE START OF CONSTRUCTION.
5. SEE SPECIAL PROVISION FOR "TEMPORARY INFORMATION SIGNING" FOR ADDITIONAL INFORMATION.
6. ONE SIGN ASSEMBLY EQUALS 25.70 SQ. FT. (2.3 SQ. M.)
7. SHALL BE PAID FOR AS TEMPORARY INFORMATION SIGNING.

ALL DIMENSIONS ARE IN INCHES (MILLIMETERS) UNLESS OTHERWISE SHOWN.

FILE NAME =	USER NAME = steedpa	DESIGNED -	REVISED - R. MIRS 09-15-97
c:\p\work\p\dot\stedpa\08249543\Dist	td.dgn	DRAWN -	REVISED - R. MIRS 12-11-97
	PLOT SCALE = 100.0000 / in.	CHECKED -	REVISED - T. RAMMACHER 02-02-99
	PLOT DATE = 1/28/2013	DATE -	REVISED - C. JUCIUS 01-31-07

STATE OF ILLINOIS
DEPARTMENT OF TRANSPORTATION

ARTERIAL ROAD
INFORMATION SIGN

SCALE: NONE SHEET NO. 1 OF 1 SHEETS STA. TO STA.

F.A.U. RTE.	SECTION	COUNTY	TOTAL SHEETS	SHEET NO.
330	104-R5-10	WILL	20	20
TC-22			CONTRACT NO. 60N32	
FED. ROAD DIST. NO. 1 ILLINOIS FED. AID PROJECT				