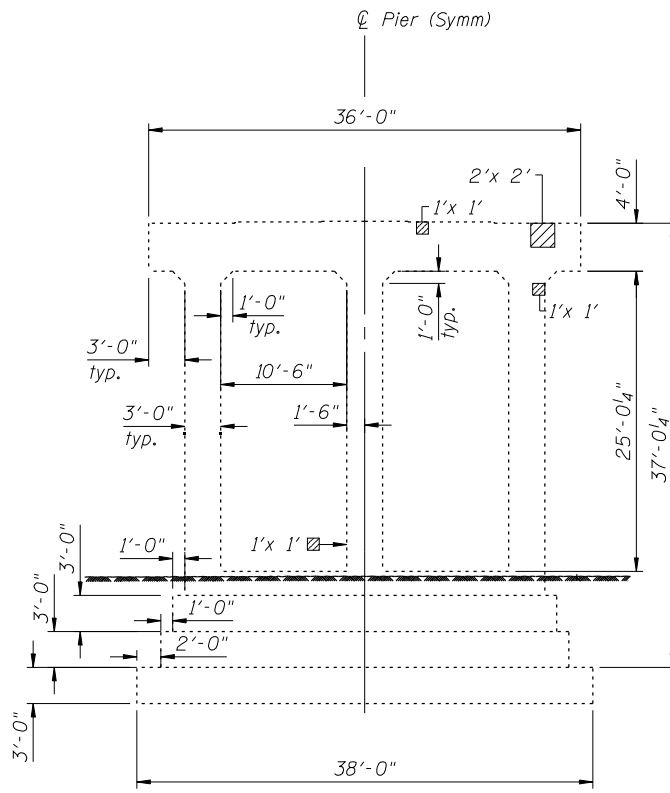
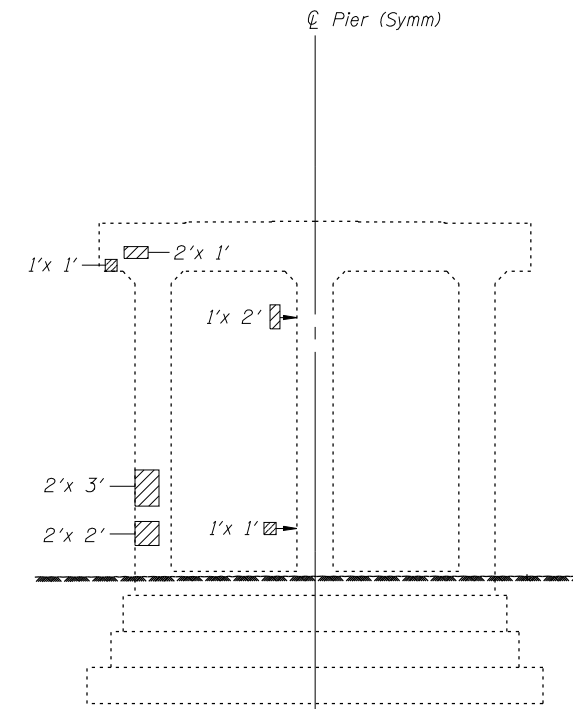


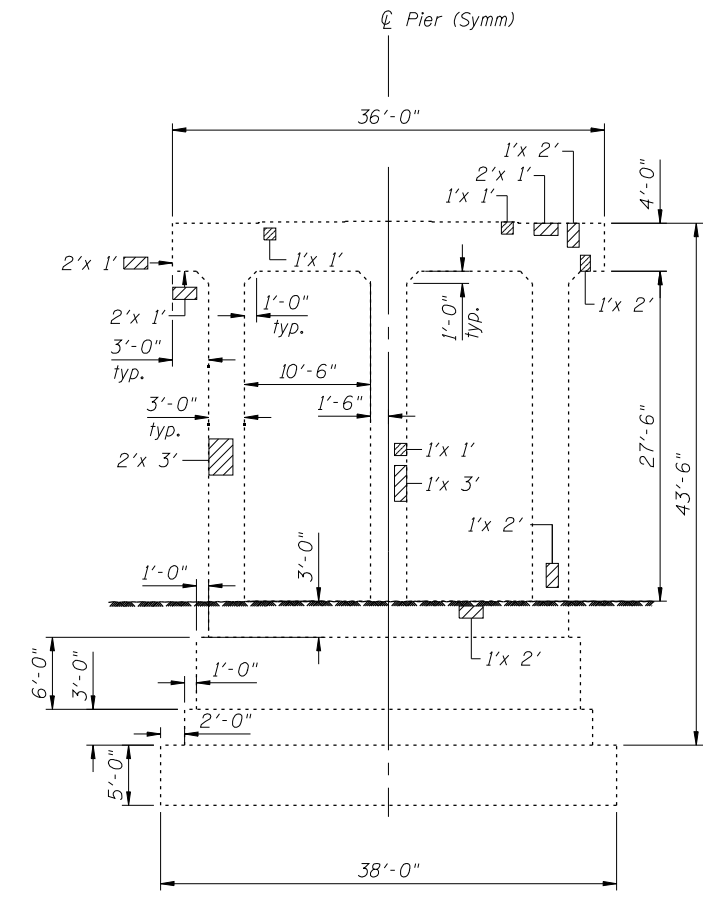
FILE NAME = it:\103103.1-55 over des planes\structure1\cadd sheets\160R62-57-pier-1-2.NB.dgn



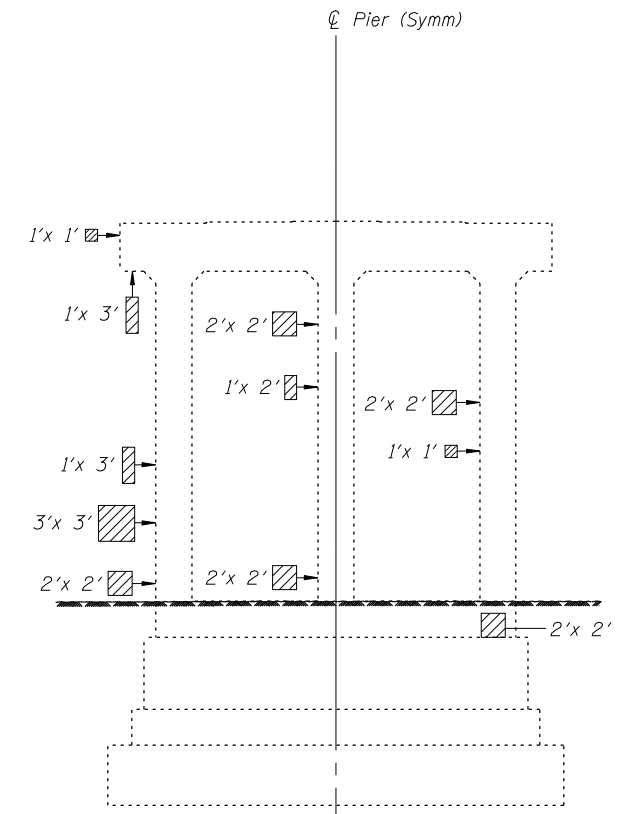
PIER 1 NORTH ELEVATION



PIER 1 SOUTH ELEVATION




PIER 2 NORTH ELEVATION



PIER 2 SOUTH ELEVATION

LEGEND:

 Structural Repair of Concrete
(Depth Equal to or Less Than 5 Inches)

BILL OF MATERIAL

DESCRIPTION	UNIT	TOTAL
Structural Repair of Concrete (Depth Equal to or Less Than 5 Inches)	Sq Ft	88



USER NAME = IDOT	DESIGNED - J.C.N./B.N.S./J.W.	REVISED -
PLOT SCALE = 0:2.0000 '1' / IN.	CHECKED - B.N.S./J.W.	REVISED -
PLOT DATE = 1/18/2013	DRAWN - F.M.	REVISED -
	DATE - JANUARY 16, 2013	REVISED -

**STATE OF ILLINOIS
DEPARTMENT OF TRANSPORTATION**

**PIERS 1 & 2 REPAIRS - NORTHBOUND
STRUCTURE NO. 099-0009**

SHEET NO. S57 OF S60 SHEETS

F.A.I. RTE.	SECTION	COUNTY	TOTAL SHEETS	SHEET NO.
55	87B, D-BR-1	WILL	106	93
CONTRACT NO. 60R62			ILLINOIS FED. AID PROJECT	