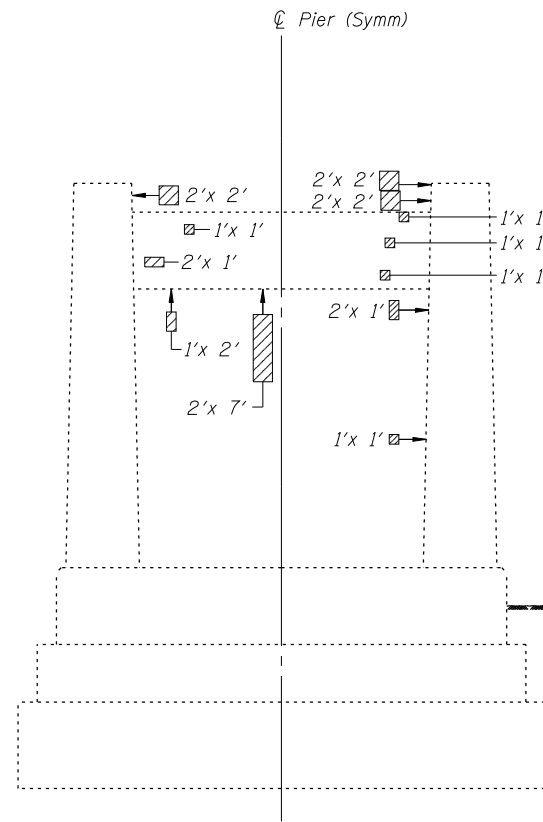
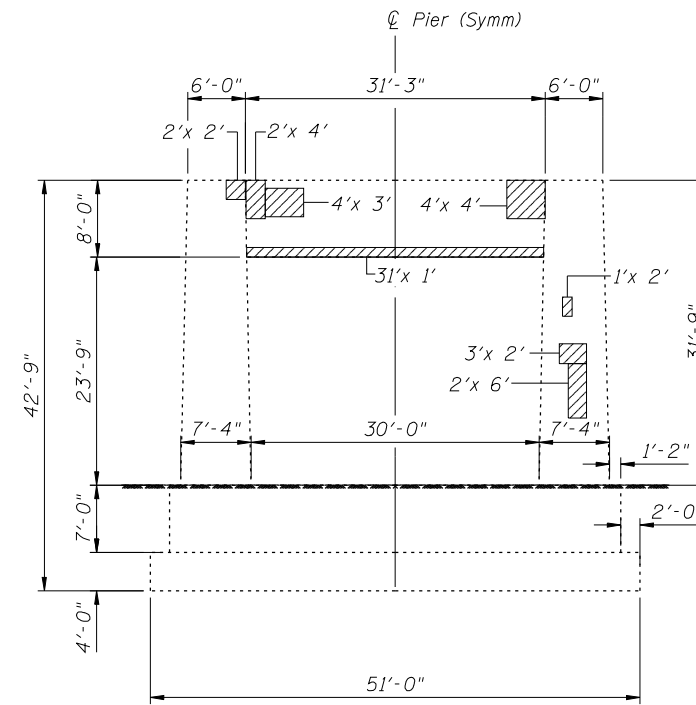


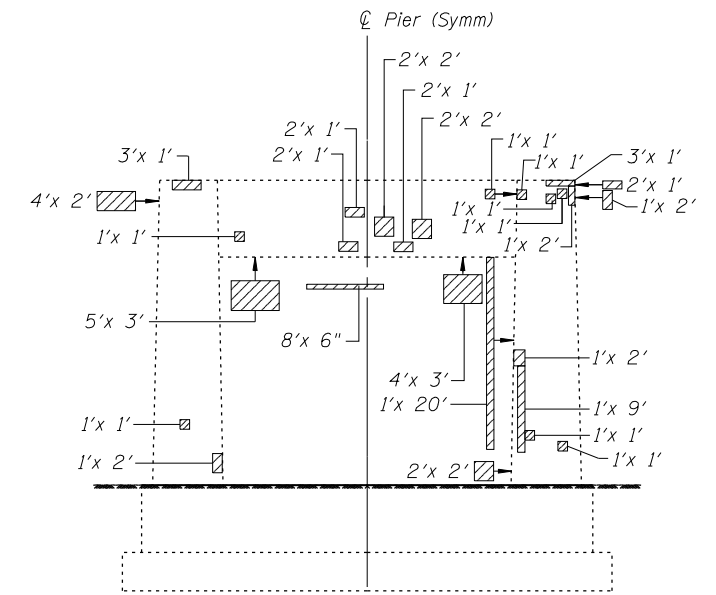
PIER 5 NORTH ELEVATION



PIER 5 NORTH ELEVATION

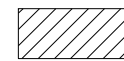


PIER 6 NORTH ELEVATION



PIER 6 NORTH ELEVATION

**LEGEND:**

 Structural Repair of Concrete  
(Depth Equal to or Less Than 5 Inches)

**BILL OF MATERIAL**

DESCRIPTION	UNIT	TOTAL
Structural Repair of Concrete (Depth Equal to or Less Than 5 Inches)	Sq Ft	271

FILE NAME = it:\103103.1+55 over des planes\structural\cadd sheets\160R62-59-pier-5-6\_NB.dgn



USER NAME = IDOT	DESIGNED - J.C.N./B.N.S./J.W.	REVISED -
PLOT SCALE = 0:2.0000 '1' / IN.	CHECKED - B.N.S./J.W.	REVISED -
PLOT DATE = 1/18/2013	DRAWN - F.M.	REVISED -
	DATE - JANUARY 16, 2013	REVISED -

**STATE OF ILLINOIS  
DEPARTMENT OF TRANSPORTATION**

**PIERS 5 & 6 REPAIRS - NORTHBOUND  
STRUCTURE NO. 099-0009**

SHEET NO. S59 OF S60 SHEETS

F.A.I. RTE.	SECTION	COUNTY	TOTAL SHEETS	SHEET NO.
55	87B, D-BR-1	WILL	106	95
CONTRACT NO. 60R62			ILLINOIS FED. AID PROJECT	