

STATE OF ILLINOIS
DEPARTMENT OF TRANSPORTATION
DIVISION OF HIGHWAYS

**PROPOSED
HIGHWAY PLANS**

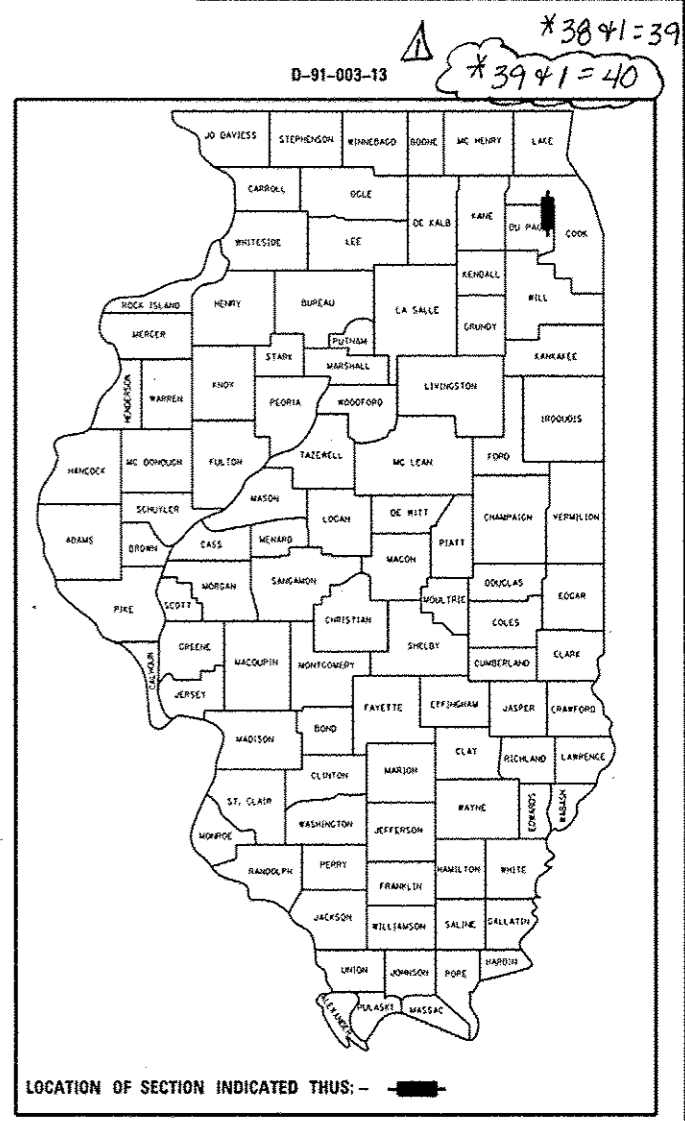
F.A.P. 344: (ILLINOIS ROUTE 83)
SECTION 540R-RS-3
ILLINOIS 64 TO ILLINOIS 19
RESURFACING (3P)
DUPAGE COUNTY

C-91-003-13

F.A.P. RTE. 344	SECTION 540R-RS-3	COUNTY ILLINOIS	TOTAL SHEETS 38	SHEET NO. 1
DUPAGE			CONTRACT NO. 60V54	

FOR INDEX OF SHEETS, SEE SHEET NO. 2

PROJECT LOCATED WITHIN THE CITY OF ELMHURST, THE VILLAGE OF ADDISON, THE CITY OF WOOD DALE, AND THE VILLAGE OF BENSENVILLE

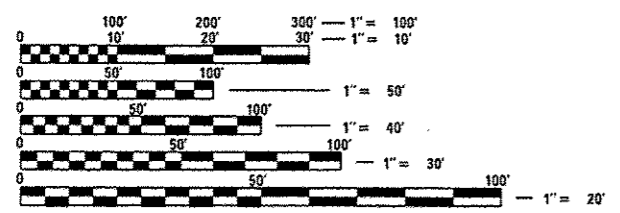


TRAFFIC DATA
IL ROUTE 83
SPEED LIMIT: 45 - 50 MPH
2011 ADT: 46600 - 53000

RESURFACING OMISSION
STA. 1049 + 56 TO STA. 1052 + 23

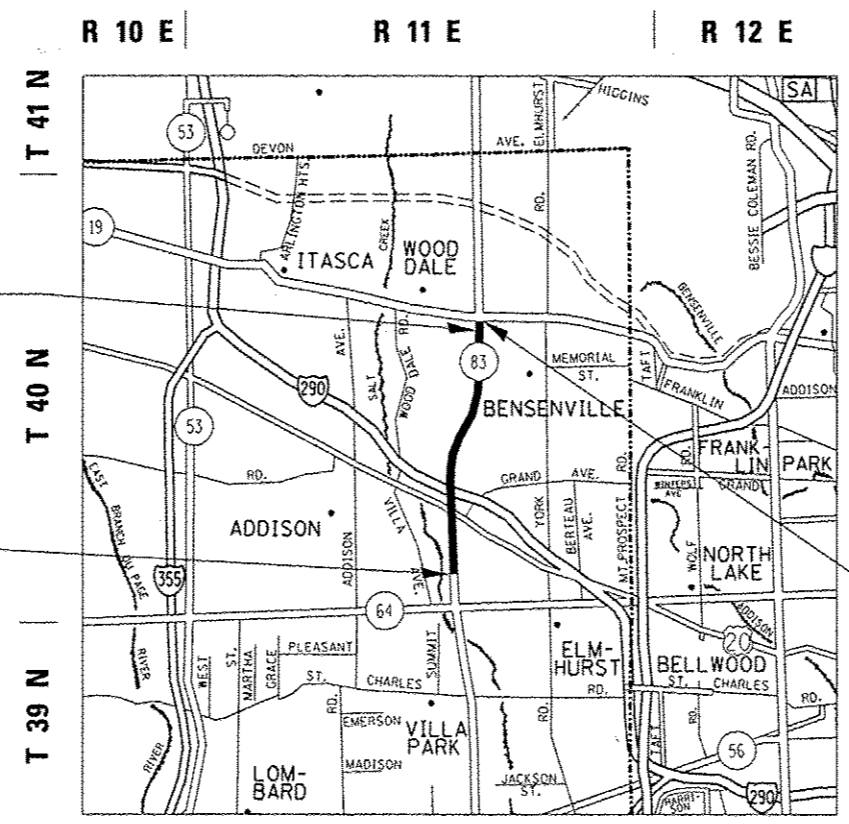
PROJECT BEGINS
STA. 869 + 87

PROJECT ENDS
STA. 1054 + 06



FULL SIZE PLANS HAVE BEEN PREPARED USING STANDARD ENGINEERING SCALES. REDUCED SIZED PLANS WILL NOT CONFORM TO STANDARD SCALES. IN MAKING MEASUREMENTS ON REDUCED PLANS, THE ABOVE SCALES MAY BE USED.

J.U.L.I.E.
JOINT UTILITY LOCATION INFORMATION FOR EXCAVATION
1-800-892-0123
OR 811



ELK GROVE AND ADDISON TOWNSHIPS
GROSS LENGTH = 18419 FT. = 3.49 MILE
NET LENGTH = 18152 FT. = 3.44 MILE

PROJECT ENGINEER: DAN WILGREEN / (847) 705-4240
PROJECT MANAGER: KEN ENG / (847) 705-4247

CONTRACT NO. 60V54

STATE OF ILLINOIS
DEPARTMENT OF TRANSPORTATION
DIVISION OF HIGHWAYS
SUBMITTED February 14, 2013
John D. Baranzelli
DEPUTY DIRECTOR OF HIGHWAYS, REGION ENGINEER
March 22, 2013
John D. Baranzelli P.E.
ENGINEER OF DESIGN AND ENVIRONMENT
March 22, 2013
Omer Osman P.E.
DIRECTOR OF HIGHWAYS, CHIEF ENGINEER

PRINTED BY THE AUTHORITY
OF THE STATE OF ILLINOIS

Rev. 4-11-13