

STATE OF ILLINOIS  
DEPARTMENT OF TRANSPORTATION  
DIVISION OF HIGHWAYS

**PROPOSED  
HIGHWAY PLANS**

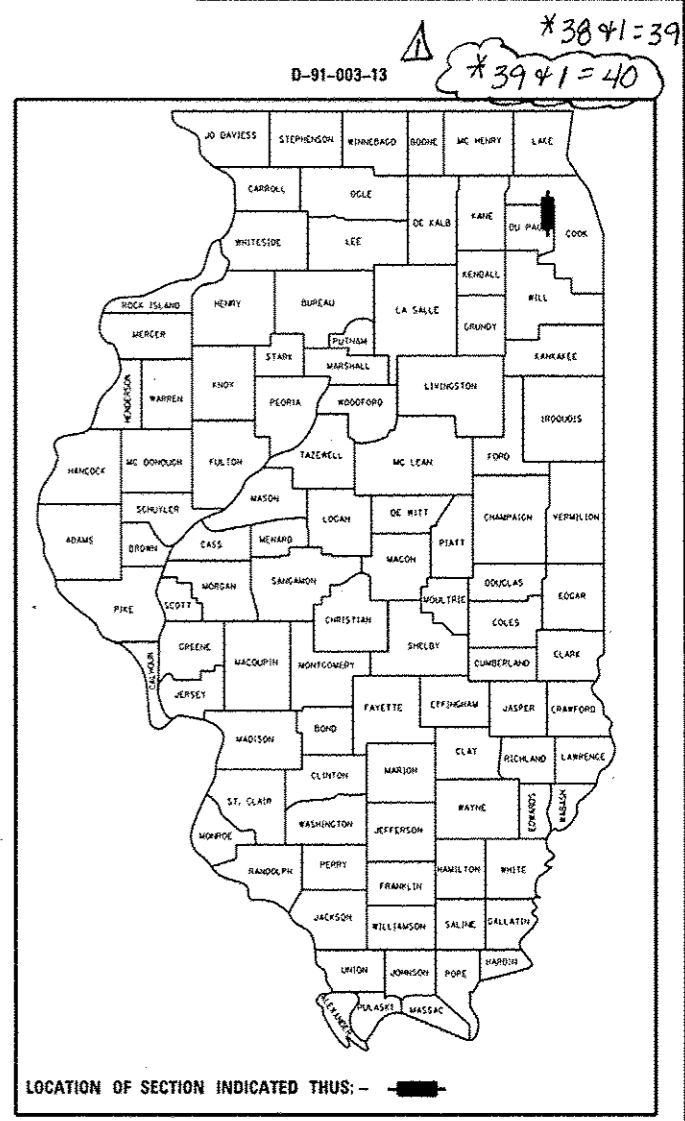
F.A.P. 344: (ILLINOIS ROUTE 83)  
SECTION 540R-RS-3  
ILLINOIS 64 TO ILLINOIS 19  
RESURFACING (3P)  
DUPAGE COUNTY

C-91-003-13

F.A.P. RTE. 344	SECTION 540R-RS-3	COUNTY ILLINOIS	TOTAL SHEETS 38	SHEET NO. 1
DUPAGE			CONTRACT NO. 60V54	

FOR INDEX OF SHEETS, SEE SHEET NO. 2

PROJECT LOCATED WITHIN THE CITY OF ELMHURST, THE VILLAGE OF ADDISON, THE CITY OF WOOD DALE, AND THE VILLAGE OF BENSENVILLE

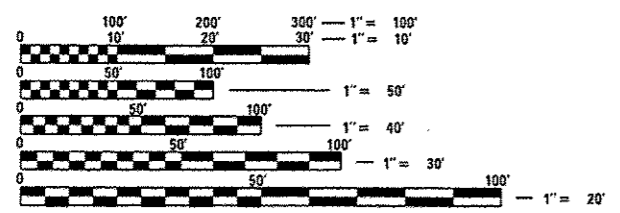


TRAFFIC DATA  
IL ROUTE 83  
SPEED LIMIT: 45 - 50 MPH  
2011 ADT: 46600 - 53000

RESURFACING OMISSION  
STA. 1049 + 56 TO STA. 1052 + 23

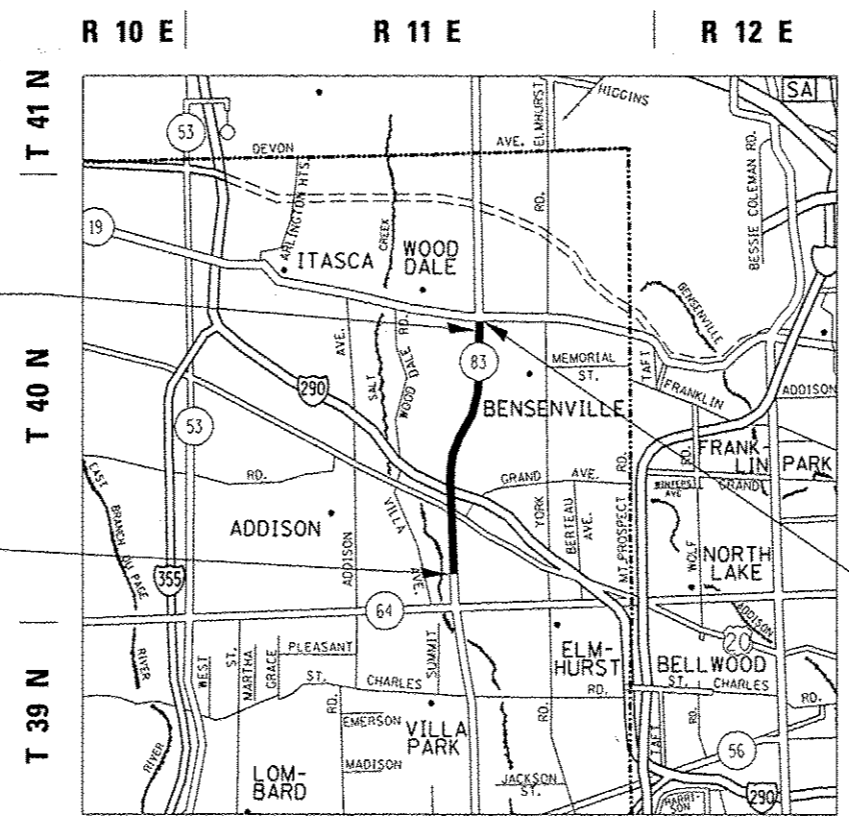
PROJECT BEGINS  
STA. 869 + 87

PROJECT ENDS  
STA. 1054 + 06



FULL SIZE PLANS HAVE BEEN PREPARED USING STANDARD ENGINEERING SCALES. REDUCED SIZED PLANS WILL NOT CONFORM TO STANDARD SCALES. IN MAKING MEASUREMENTS ON REDUCED PLANS, THE ABOVE SCALES MAY BE USED.

J.U.L.I.E.  
JOINT UTILITY LOCATION INFORMATION FOR EXCAVATION  
1-800-892-0123  
OR 811



ELK GROVE AND ADDISON TOWNSHIPS

GROSS LENGTH = 18419 FT. = 3.49 MILE  
NET LENGTH = 18152 FT. = 3.44 MILE

PROJECT ENGINEER: DAN WILGREEN / (847) 705-4240  
PROJECT MANAGER: KEN ENG / (847) 705-4247

CONTRACT NO. 60V54

STATE OF ILLINOIS  
DEPARTMENT OF TRANSPORTATION  
DIVISION OF HIGHWAYS

SUBMITTED February 14, 2013  
*John D. Baranzelli*  
DEPUTY DIRECTOR OF HIGHWAYS, REGION ENGINEER

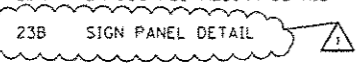
March 22, 2013  
*John D. Baranzelli P.E.*  
ENGINEER OF DESIGN AND ENVIRONMENT

March 22, 2013  
*Omer Osman P.E.*  
DIRECTOR OF HIGHWAYS, CHIEF ENGINEER

PRINTED BY THE AUTHORITY  
OF THE STATE OF ILLINOIS

Rev. 4-11-13

INDEX OF SHEETS

- 1 COVER SHEET
- 2 INDEX OF SHEETS, STATE STANDARDS AND GENERAL NOTES
- 3-5 SUMMARY OF QUANTITIES
- 6-9 TYPICAL SECTIONS
- 10-16 ROADWAY AND PAVEMENT MARKING PLANS
- 17-23 LANDSCAPING PLANS
- 23A LANDSCAPED MEDIAN DETAIL
- 23B SIGN PANEL DETAIL 
- 24-25 DETECTOR LOOP REPLACEMENT
- 26 FRAMES AND LIDS ADJUSTMENT WITH MILLING (BD 08)
- 27 PAVEMENT PATCHING FOR HMA SURFACED PAVEMENT (BD 22)
- 28 CURB OR CURB AND GUTTER REMOVAL AND REPLACEMENT (BD 24)
- 29 BUTT JOINTS AND HMA TAPER (BD 32)
- 30 TRAFFIC CONTROL AND PROTECTION FOR SIDE ROADS, INTERSECTIONS AND DRIVEWAYS (TC 10)
- 31 RAISED REFLECTIVE PAVEMENT MARKERS, SNOW PLOW RESISTANT (TC 11)
- 32-33 MULTI-LANE FREEWAY PAVEMENT MARKING DETAILS (TC 12)
- 34 DISTRICT ONE TYPICAL PAVEMENT MARKINGS (TC 13)
- 35 TRAFFIC CONTROL AND PROTECTION AT TURN BAYS (TO REMAIN OPEN TO TRAFFIC) (TC 14)
- 36 PAVEMENT MARKING LETTERS AND SYMBOLS FOR TRAFFIC STAGING (TC 16)
- 37 ARTERIAL ROAD INFORMATION SIGN (TC 22)
- 38 DETECTOR LOOP INSTALLATION DETAILS FOR ROADWAY RESURFACE (TS 07)

STATE STANDARDS

- 000001-06 STANDARD SYMBOLS, ABBREVIATIONS AND PATTERNS
- 442201-03 CLASS C AND D PATCHES
- 482011-03 HMA SHOULDER STRIPS/SHLDS. WITH RESURFACING OR WIDENING AND RESURFACING PROJECTS
- 606001-04 CONCRETE CURB TYPE B AND COMBINATION CONCRETE CURB AND GUTTER
- 606301-04 PC CONCRETE ISLANDS AND MEDIANS
- 604001-03 FRAMES AND LIDS TYPE 1
- 604091-02 FRAME AND GRATE TYPE 24
- 635011-02 REFLECTOR MARKER AND MOUNTING DETAIL
- 701101-03 REFLECTOR MARKER AND MOUNTING DETAIL
- 701426-05 LANE CLOSURE, MULTILANE, INTERMITTENT OR MOVING OPERATIONS FOR SPEEDS >= 45 MPH
- 701601-08 URBAN LANE CLOSURE, MULTILANE INTERSECTION
- 701701-08 URBAN LANE CLOSURE, MULTILANE INTERSECTION
- 701801-05 SIDEWALK, CORNER OR CROSSWALK CLOSURE
- 701901-02 TRAFFIC CONTROL DEVICES

GENERAL NOTES

- 1 BEFORE STARTING ANY EXCAVATION, THE CONTRACTOR SHALL CALL "J.U.L.I.E." AT 800-892-0123 FOR FIELD LOCATIONS OF BURIED ELECTRIC, TELEPHONE AND GAS FACILITIES. 48 HOUR NOTIFICATION IS REQUIRED.
- 2 THE CONTRACTOR SHALL COORDINATE CONSTRUCTION ACTIVITIES WITH THE UTILITY COMPANIES, VILLAGE OF BENSENVILLE, CITY OF ELMHURST, VILLAGE OF ADDISON AND CITY OF WOOD DALE.
- 3 THE CONTRACTOR WILL NOT BE ALLOWED TO SET UP A YARD OR FIELD OFFICE ON STATE PROPERTY WITHOUT WRITTEN PERMISSION FROM THE DEPARTMENT.
- 4 ANY PAVEMENT MARKINGS AND RAISED REFLECTIVE PAVEMENT MARKERS OBLITERATED BY MILLING AND RESURFACING OPERATIONS ON SIDE STREETS AND ENTRANCES SHALL BE REPLACED AND PAID FOR IN KIND.
- 5 ALL DAMAGE TO EXISTING PAVEMENT MARKING OR RAISED REFLECTIVE PAVEMENT MARKERS OUTSIDE THE REMOVAL LINE SHOWN ON THE PLANS SHALL BE REPLACED AT THE CONTRACTORS EXPENSE. NO ADDITIONAL COST TO THE DEPARTMENT.
- 6 BEFORE BEGINNING ANY WORK, THE CONTRACTOR SHALL RETAIN AND RECORD FOR FUTURE REFERENCES, ALL EXISTING PAVEMENT MARKING LINES AND RAISED REFLECTIVE PAVEMENT MARKERS IN ORDER THAT THESE LOCATIONS CAN BE RE-ESTABLISHED FOR STRIPING. EXACT LOCATIONS OF ALL STRIPING SHALL BE AS DIRECTED BY THE ENGINEER.
- 7 ALL PAVEMENT PATCHING LOCATIONS WILL BE DETERMINED IN THE FIELD BY THE ENGINEER.
- 8 LOCATIONS OF COMBINATION CONCRETE CURB AND GUTTER REMOVAL AND REPLACEMENT, WILL BE DETERMINED IN THE FIELD BY THE ENGINEER.
- 9 DRAINAGE ADJUSTMENT OR RECONSTRUCTION LOCATIONS WILL BE DETERMINED IN THE BY THE ENGINEER.
- 10 THE CONTRACTOR SHALL BE RESPONSIBLE FOR VERIFYING ALL DIMENSIONS AND CONDITIONS EXISTING IN THE FIELD PRIOR TO CONSTRUCTION AND ORDERING MATERIALS.
- 11 THE CONTRACTOR SHALL CONTACT THE DISTRICT ONE TRAFFIC CONTROL SUPERVISOR AT (847) 705-4470 A MINIMUM OF 72 HOURS IN ADVANCE OF BEGINNING WORK.
- 12 THE ENGINEER SHALL CONTACT DON CHIARUGI, THE TRAFFIC FIELD TECHNICIAN AT (847) 741-9857 A MINIMUM OF TWO (2) WEEKS PRIOR TO THE PLACEMENT OF PERMANENT PAVEMENT MARKINGS.
- 13 THE CONTRACTOR SHALL BE REQUIRED TO PROVIDE ACCESS TO ABUTTING PROPERTY AT ALL TIMES DURING THE CONSTRUCTION OF THIS PROJECT.
- 14 DO NOT SCALE PLANS FOR CONSTRUCTION DIMENSIONS.
- 15 WHEN MILLED PAVEMENT IS OPEN TO TRAFFIC THE MAXIMUM GRADE DIFFERENTIAL BETWEEN PASSES OF THE MILLING SHALL NOT EXCEED 1 1/2 INCHES WHERE THE SPEED LIMIT IS 45 MPH OR LESS AND 1 INCH WHERE THE SPEED LIMIT IS GREATER THAN 45 MPH. WITH WRITTEN APPROVAL FROM THE ENGINEER, A MAXIMUM GRADE DIFFERENTIAL OF 3 INCHES MAY BE ALLOWED IF THE EDGE OF THE MILLING IS SLOPED A MINIMUM 1:3 (V:H).
- 16 BUTT JOINTS WILL BE INSTALLED AT THE ENDS OF ALL RESURFACING (WHERE RESURFACING MEETS EXISTING PAVEMENT). IN ACCORDANCE WITH THE "BUTT JOINT AND HOT-MIX ASPHALT TAPER DETAILS" SHEET INCLUDED IN THE PLANS UNLESS OTHERWISE SPECIFIED.
- 17 PAVEMENT MARKING TAPE, TYPE III SHALL BE USED FOR SHORT TERM PAVEMENT MARKINGS ON ALL FINAL SURFACES. THE COST OF THE PAVEMENT MARKING TAPE, TYPE III AND IT'S REMOVAL SHALL BE INCLUDED IN THE COST OF SHORT TERM PAVEMENT MARKING.
- 18 THIS PROJECT REQUIRES AN NPDES PERMIT
- 19 ALL TREE PROTECTION, TREE REMOVAL, PRUNING AND ROOT PRUNING SHALL BE COMPLETED BEFORE CONSTRUCTION OPERATIONS COMMENCE IN ANY AREA, AT NO TIME SHALL THE CONTRACTOR PRUNE OR REMOVE ANY TREES UNLESS SPECIFICALLY DIRECTED BY THE ENGINEER
- 20 PRUNE TREE LIMBS THAT MIGHT BE DAMAGED BY EQUIPMENT OPERATIONS AT LEAST ONE WEEK PRIOR TO THE START OF CONSTRUCTION BY CERTIFIED ARBORIST. ANY TREE LIMBS THAT ARE BROKEN BY CONSTRUCTION EQUIPMENT AFTER THE INITIAL PRUNING MUST BE PRUNED CORRECTLY WITHIN 72 HOURS.

GENERAL NOTES

THE DEPARTMENT HAS DETERMINED THAT IN STREAM WORK IS NOT REQUIRED FOR THE WORK SPECIFIED IN THIS CONTRACT. THE DEPARTMENT HAS NOT OBTAINED A 404 PERMIT. IF THE CONTRACTOR CHOOSES TO USE ACTIVITIES REQUIRING AN USACE 404 PERMIT IT IS THE CONTRACTOR'S RESPONSIBILITY TO SECURE THE PROPER USACE PERMITS.

THE DEPARTMENT HAS NOT OBTAINED ANY PERMITS FOR OFFSITE BORROW OR WASTE/USE (BMU) AREAS. PRIOR TO WORKING IN BMU AREAS, IF THE CONTRACTOR CHOOSES TO USE ACTIVITIES REQUIRING PERMITS IT IS THE CONTRACTOR'S RESPONSIBILITY TO SECURE THE PROPER PERMITS. IN ADDITION TO THE BORROW REVIEW (BDE 2289) AND USE/WASTE REVIEW (BDE 2290) SUBMITTALS, THE CONTRACTOR WILL NEED TO SUBMIT AN EROSION AND SEDIMENT CONTROL (ESC) PLAN FOR EVERY BMU SITE TO THE DEPARTMENT FOR ACCEPTANCE. THE COST OF ALL MATERIALS AND LABOR NECESSARY TO COMPLY WITH THE ABOVE PROVISIONS TO PREPARE AND IMPLEMENT ESC PLANS WILL NOT BE PAID FOR SEPERATELY, BUT SHALL BE CONSIDERED AS INCLUDED IN THE UNIT BID PRICES OF THE CONTRACT AND NO ADDITIONAL COMPENSATION WILL BE ALLOWED.

EXISTING SIGN DIMENSIONS WERE NOT AVAILABLE AT THE LOCATION SCHEDULE FOR REMOVAL. FOR BIDDING PURPOSES, THE PROPOSED SIGN DIMENSIONS WERE PROVIDED. THE CONTRACTOR SHALL BE PAID AT THE CONTRACT UNIT PRICE PER SQUARE FOOT FOR THE ACTUAL SIGN DIMENSIONS REMOVED AND MEASURED IN PLACE.

THE REPLACEMENT OF ALL SIGN PANELS SCHEDULED TO BE REMOVED AND REPLACED SHALL OCCUR WITHIN 2 HOURS OF THE REMOVAL OF EACH SIGN PANEL.

FILE NAME *	USER NAME * Bilgromiso	DESIGNED -	REVISED - SB 3/14/13	<b>STATE OF ILLINOIS DEPARTMENT OF TRANSPORTATION</b>	<b>IL 83 (IL 19 TO IL 64) INDEX OF SHEETS, STATE STANDARDS AND GENERAL NOTES</b>				F.A.P. RTE.	SECTION	COUNTY	TOTAL SHEETS	SHEET NO.
c:\pwork\pvidat\bilgromiso\00315608\01	0313-akt-plandgn	DRAWN -	REVISED - Δ SB 4/08/13		344	540R-RS-3	DUPAGE	38	2				
*MODELNAME*	PLOT SCALE * 100.0000 ' / in.	CHECKED -	REVISED -		CONTRACT NO. 60V54								
	PLOT DATE * 4/9/2013	DATE -	REVISED -		SCALE:	SHEET	OF	SHEETS	STA.	TO STA.	ILLINOIS FED. AID PROJECT		

SUMMARY OF QUANTITIES			URBAN		CONSTRUCTION TYPE CODE			
CODE NO	ITEM	UNIT	TOTAL QUANTITIES	0005 100% STATE	0005 65% STATE BENSENVILLE 35%	0005 100% BENSENVILLE		
20101300	TREE PRUNING (1 TO 10 INCH DIAMETER)	EACH	20	20				
20101350	TREE PRUNING (OVER 10 INCH DIAMETER)	EACH	20	20				
20201200	REMOVAL AND DISPOSAL OF UNSUITABLE MATERIAL	CU YD	4014	4014				
* 21101600	TOPSOIL FURNISH AND PLACE, VARIABLE DEPTH	SO YD	12,041	12,041				
* 25000210	SEEDING, CLASS 2A	ACRE	2.49	2.49				
* 25000400	NITROGEN FERTILIZER NUTRIENT	POUND	224	224				
* 25000500	PHOSPHORUS FERTILIZER NUTRIENT	POUND	224	224				
* 25000600	POTASSIUM FERTILIZER NUTRIENT	POUND	224	224				
* 25100630	EROSION CONTROL BLANKET	SO YD	12,041	12,041				
<del>40600200</del>	<del>BITUMINOUS MATERIALS (PRIME COAT)</del>	<del>TON</del>	<del>206</del>	<del>206</del>				
<del>40600300</del>	<del>AGGREGATE (PRIME COAT)</del>	<del>TON</del>	<del>1026</del>	<del>1026</del>				
40600400	MIXTURE FOR CRACKS, JOINTS, AND FLANGEWAYS	TON	385	385				
40600825	POLYMERIZED LEVELING BINDER (MACHINE METHOD), N50	TON	13879	13879				
40600895	CONSTRUCTING TEST STRIP	EACH	3	3				

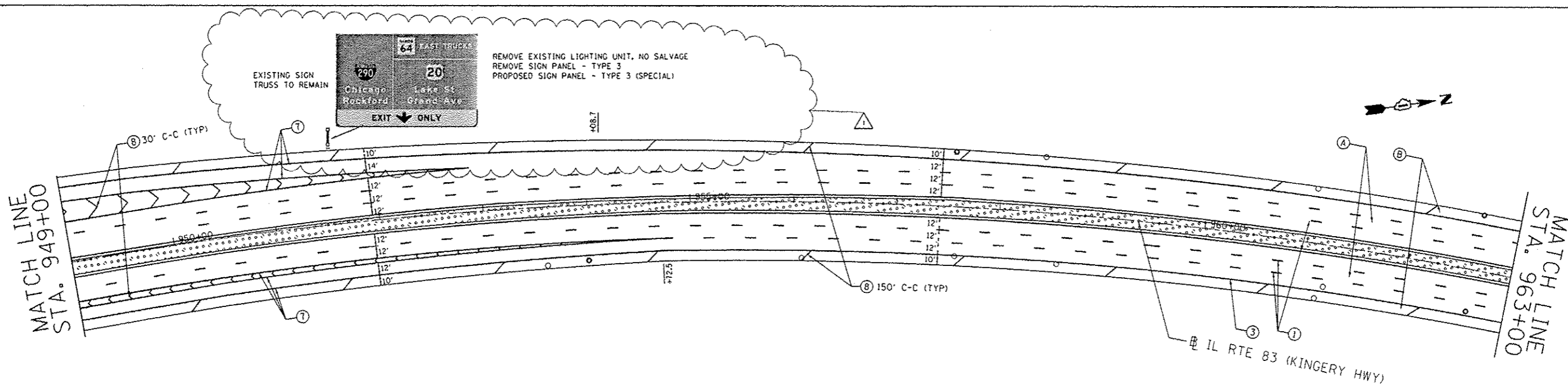
SUMMARY OF QUANTITIES			URBAN		CONSTRUCTION TYPE CODE			
CODE NO	ITEM	UNIT	TOTAL QUANTITIES	0005 100% STATE	0005 65% STATE BENSENVILLE 35%	0005 100% BENSENVILLE		
40600982	HOT-MIX ASPHALT SURFACE REMOVAL - BUTT JOINT	SO YD	568	568				
40601005	HOT-MIX ASPHALT REPLACEMENT OVER PATCHES	TON	1269	1269				
40603153	POLYMERIZED HOT-MIX ASPHALT SURFACE COURSE, STONE MATRIX ASPHALT, N80	TON	19,150	19,150				
40603340	HOT-MIX ASPHALT SURFACE COURSE, MIX "D", N70	TON	10155	10155				
42001300	PROTECTIVE COAT	SO YD	1220	1220				
44000159	HOT-MIX ASPHALT SURFACE REMOVAL, 2 1/2"	SO YD	256259	256259				
<del>44000500</del>	<del>COMBINATION CURB AND GUTTER REMOVAL</del>	<del>FOOT</del>	<del>4523</del>	<del>4523</del>				
44002210	HOT-MIX ASPHALT REMOVAL OVER PATCHES, 2 1/2"	SO YD	9058	9058				
44201765	CLASS D PATCHES, TYPE II, 10 INCH	SO YD	6694	6694				
44201769	CLASS D PATCHES, TYPE III, 10 INCH	SO YD	328	328				
44201771	CLASS D PATCHES, TYPE IV, 10 INCH	SO YD	854	854				
48102100	AGGREGATE WEDGE SHOULDER, TYPE B	TON	936	936				
60252800	CATCH BASINS TO BE RECONSTRUCTED	EACH	4	4				

13 \* Specialty Items Rev. 4-11-13

SUMMARY OF QUANTITIES				URBAN CONSTRUCTION TYPE CODE				SUMMARY OF QUANTITIES				URBAN CONSTRUCTION TYPE CODE			
CODE NO	ITEM	UNIT	TOTAL QUANTITIES	0005 100% STATE	0005 65% STATE BENSENVILLE 35%	0005 100% BENSENVILLE		CODE NO	ITEM	UNIT	TOTAL QUANTITIES	0005 100% STATE	0005 65% STATE BENSENVILLE 35%	0005 100% BENSENVILLE	
* 88600600	DETECTOR LOOP REPLACEMENT	FOOT	1810	1810				X0326017	CONCRETE MEDIAN SURFACE, 5" (SPECIAL)	SO FT	11,202		11,202		
* A2005516	TREE, NYSSA SYLVATICA (BLACK TUPELO), 2" CALIPER, BALLED AND BURLAPPED	EACH	44			44		* B2005136	TREE MALUS SPRING SNOW (SPRING SNOW CRABAPPLE). 2" CALIPER, TREE FORM BALLED AND BURLAPPED	EACH	44			44	
* B2004116	TREE, MALUS PRAIRIFIRE (PRAIRIFIRE CRABAPPLE), 2" CALIPER, TREE FORM, BALLED AND BURLAPPED	EACH	44			44		Z0034105	MATERIAL TRANSFER DEVICE	TON	19,150	19,150			
* B2006116	TREE, SYRINGA PEKINENSIS MORTON (CHINA SNOW PEKING LILAC), 2" CALIPER, TREE FORM, BALLED AND BURLAPPED	EACH	44			44		28000510	INLET FILTERS	EACH	78	78			△
* K0029634	WEED CONTROL, PRE-EMERGENT GRANULAR HERBICIDE	POUND	262	262				400251200	CATCH BASIN TO BE ADJUSTED WITH NEW TYPE B GRATE	EACH	9	9			
* X2020110	GRADING AND SHAPING SHOULDERS	UNIT	234	234				X4401190	HOT-MIX ASPHALT SURFACE REMOVAL, VARIABLE DEPTH	SQ YD	4531	4531			
X4402020	<sup>SURFACE</sup> CONCRETE MEDIAN REMOVAL	SO FT	119,569	119,569				<del>Z0076000</del>	<del>TRAINEES</del>	<del>HOUR</del>	<del>1500</del>	<del>1500</del>			
X5537800	STORM SEWERS TO BE CLEANED 12"	FOOT	500	500				© Z0076004	TRAINEES-TRAINING PROGRAM GRADUATE	HOUR	1500	1500			
X6030310	FRAMES AND LIDS TO BE ADJUSTED (SPECIAL)	EACH	94	94				X4060170	NON-TRACKING BITUMINOUS MATERIALS (PRIME COAT)	POUND	172,092	172,092			△
Z0004562	COMBINATION CONCRETE CURB AND GUTTER REMOVAL AND REPLACEMENT	FOOT	5489	5489				28000305	TEMPORARY DITCH CHECKS	FOOT	30	30			
Z0018500	DRAINAGE STRUCTURES TO BE CLEANED	EACH	135	135				* 72400330	REMOVE SIGN PANEL - TYPE 3	SQ FT	250	250			△
Z0030850	TEMPORARY INFORMATION SIGNING	SO FT	52	52				* 84200600	REMOVAL OF LIGHTING UNIT, NO SALVAGE	EACH	2	2			
								* X7200305	SIGN PANEL - TYPE 3 (SPECIAL)	SQ FT	384	384			

© 0042  
\* Specialty Items

△ Rev. 4-11-13



**PAVEMENT MIX LEGEND**

- (A) PROPOSED HMA SURFACE REMOVAL 2 1/2".  
POLYMERIZED LEVELING BINDER (MACHINE METHOD), IL-4.75, N50 -1"
- (B) PROPOSED HMA SURFACE REMOVAL 2 1/2".  
POLYMERIZED LEVELING BINDER (MACHINE METHOD), IL-4.75, N50 -1"  
HMA SURFACE COURSE, MIX "D", N70 -2"

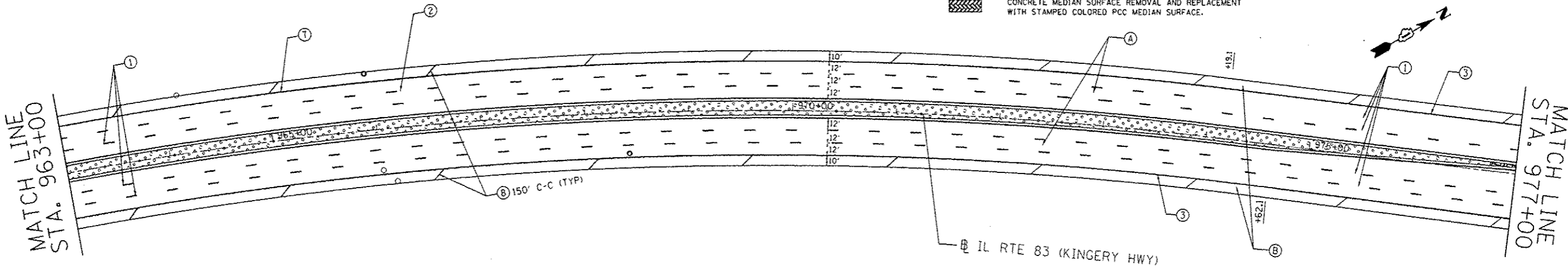
**PAVEMENT MARKING LEGEND (SEE NOTE 1)**

- (1) THERMOPLASTIC PAVEMENT MARKING 4" WHITE LANE LINE (30' SKIP 10' DASH)
- (2) THERMOPLASTIC PAVEMENT MARKING 8" WHITE DOTTED LINE (9' SKIP 3' DASH)
- (3) THERMOPLASTIC PAVEMENT MARKING 4" SOLID WHITE LINE
- (4) THERMOPLASTIC PAVEMENT MARKING 4" SOLID YELLOW LINE
- (5) THERMOPLASTIC PAVEMENT MARKING 4" DOUBLE YELLOW LINE 11" C-C
- (6) THERMOPLASTIC PAVEMENT MARKING 6" WHITE LINE
- (7) THERMOPLASTIC PAVEMENT MARKING 8" WHITE LINE
- (8) THERMOPLASTIC PAVEMENT MARKING 12" DIAGONAL WHITE LINE
- (9) THERMOPLASTIC PAVEMENT MARKING 12" DIAGONAL YELLOW LINE
- (10) THERMOPLASTIC PAVEMENT MARKING 24" WHITE STOP BAR
- (11) THERMOPLASTIC PAVEMENT MARKING LETTERS AND SYMBOLS (TYP)

**NOTES:**

1. REFER TO DISTRICT 1 TYPICAL PAVEMENT MARKINGS (TC-13) FOR ADDITIONAL INFORMATION.
2. REFER TO DISTRICT 1 RAISED REFLECTIVE PAVEMENT MARKERS (TC-11) FOR LOCATION AND SPACING OF RAISED REFLECTIVE PAVEMENT MARKINGS

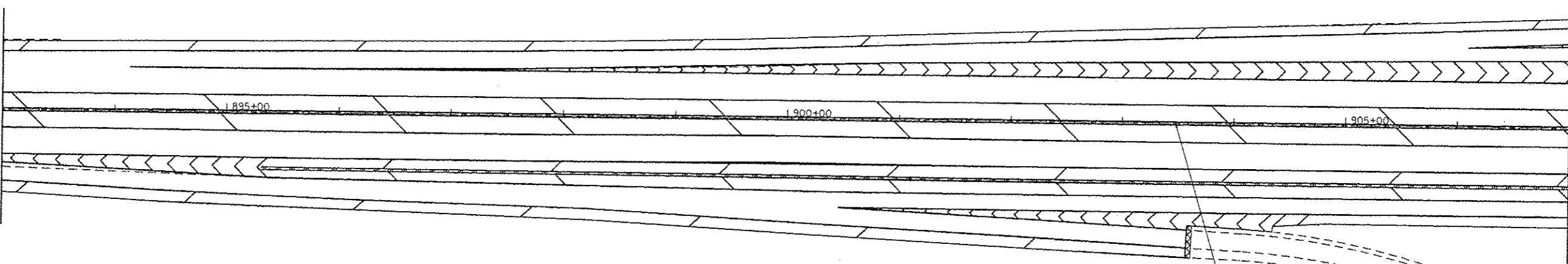
- SURFACE REMOVAL BUTT JOINT  
SEE BUTT JOINTS AND HMA TAPER DETAILS (B032)
- CONCRETE MEDIAN SURFACE REMOVAL AND REPLACEMENT  
WITH TOPSOIL AND SEED, SEE TYPICAL SECTIONS AND  
LANDSCAPING PLANS FOR DETAILS
- CONCRETE MEDIAN SURFACE REMOVAL AND REPLACEMENT  
WITH STAMPED COLORED PCC MEDIAN SURFACE.



FILE NAME :	USER NAME : Bilgramisa	DESIGNED -	REVISED - SB 3/14/13	<b>STATE OF ILLINOIS DEPARTMENT OF TRANSPORTATION</b>	<b>IL 83 (IL 19 TO IL 64) ROADWAY AND PAVEMENT MARKING PLAN</b>		F.A.P. RTE.	SECTION	COUNTY	TOTAL SHEETS	SHEET NO.
c:\pwwork\p\pidot\bilgramisa\08315608\01	08313-shr-plan.dgn	DRAWN -	REVISED - SB 4/08/13		344	540R-R5-3	DUPAGE	38	13		
MODEL NAME#	PLOT SCALE : 100.0000 / in.	CHECKED -	REVISED -		SCALE: SHEET OF SHEETS STA. TO STA.		CONTRACT NO. 60V54		ILLINOIS FED. AID PROJECT		
	PLOT DATE : 4/8/2013	DATE -	REVISED -								

MATCH LINE  
STA. 893+00

MATCH LINE  
STA. 907+00



IL RTE 83 (KINGERY HWY)

**EROSION CONTROL NOTES**

1. INLET FILTERS ARE TO BE INSTALLED ON ALL DRAINAGE STRUCTURES LOCATED WITHIN THE EXISTING CURB AND GUTTER ADJACENT TO PROPOSED LANDSCAPED (SEED) MEDIANS THROUGHOUT THE LIMITS OF RESURFACING. FINAL LOCATIONS ARE TO BE DETERMINED BY THE ENGINEER.
2. INLET FILTERS ARE TO BE INSTALLED ON ALL DRAINAGE STRUCTURES WITHIN THE EXISTING CURB AND GUTTER SOUTH OF THE EASTBOUND GRAND AVE. RAMP ALONG IL 83. FINAL LOCATIONS ARE TO BE DETERMINED BY THE ENGINEER.
3. TEMPORARY DITCH CHECKS (TDC) TO BE INSTALLED AT STA. 900+00 LT. AND 1172+00 RT. (OFFSITE) ABOVE INLETS OR AS DIRECTED BY THE ENGINEER.

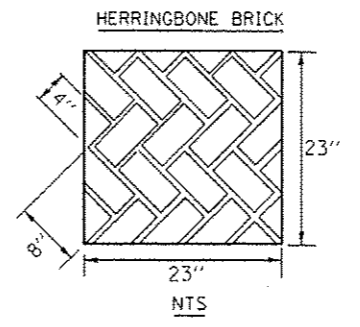
**LANDSCAPING LEGEND**

- CONCRETE MEDIAN SURFACE REMOVAL AND REPLACEMENT WITH TOPSOIL AND SEED (SEE NOTE 3)
- CONCRETE MEDIAN SURFACE REMOVAL AND REPLACEMENT WITH STAMPED COLORED PCC MEDIAN SURFACE 5 INCH (SPECIAL)
- PROPOSED TREE AT 30' CENTER TO CENTER SPACING (SEE PROPOSED TREE SCHEDULE)

**LANDSCAPING NOTES:**

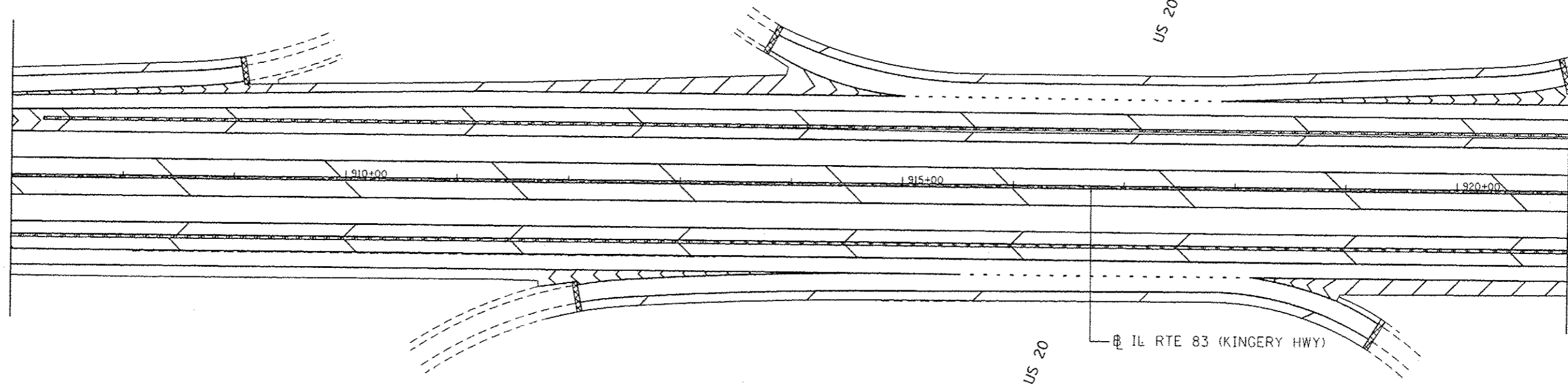
1. PROPOSED TREES LOCATED IN THE MEDIAN SHALL BE SPACED AT 30' INTERVALS IN AN ALTERNATING PATTERN FOR THE TREE SPECIES LISTED IN THE LANDSCAPING SCHEDULE.
2. COLORED STAMPED CONCRETE MEDIAN SHALL BE POURED MONOLITHICALLY AND STAMPED WITH HERRINGBONE BRICK PATTERN AS SHOWN IN THE PLANS (SEE DETAIL).
3. EROSION CONTROL BLANKET AND FERTILIZER NUTRIENTS (NITROGEN, PHOSPHORUS AND POTASSIUM) TO BE APPLIED TO ALL SEEDING AREAS

**COLORED STAMPED CONCRETE MEDIAN DETAIL:**

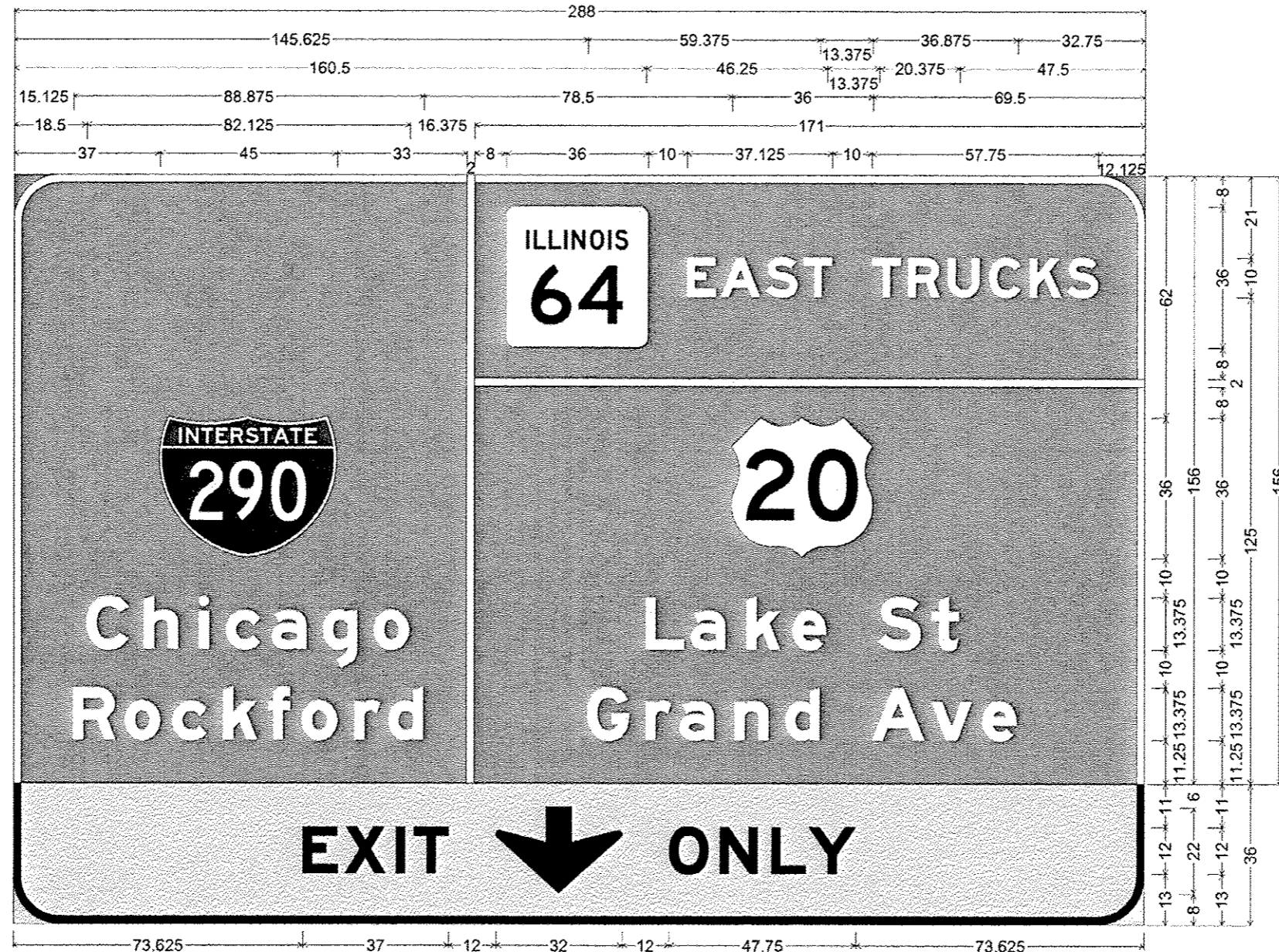


MATCH LINE  
STA. 907+00

MATCH LINE  
STA. 921+00



FILE NAME =	USER NAME = Bilgrunisa	DESIGNED -	REVISED - SB 3/14/13	<b>STATE OF ILLINOIS DEPARTMENT OF TRANSPORTATION</b>	<b>IL 83 (IL 19 TO IL 64) LANDSCAPING PLANS</b>	F.A.P. RTE.	SECTION	COUNTY	TOTAL SHEETS	SHEET NO.	
c:\pwwork\pwwork\bilgrunisa\08315608\08313-shr-plan.dgn	DRAWN -	REVISED - Δ SB 4/01/13	344			540R-RS-3	DUPAGE	38	18		
#MODELNAME*	PLOT SCALE = 100.0000' / 1" =	CHECKED -	REVISED -			CONTRACT NO. 60V54					
	PLOT DATE = 4/5/2013	DATE -	REVISED -			ILLINOIS FED. AID PROJECT					



12.000" Radius, 2.000" Border, White on Green;  
 "Chicago" E Mod 2K; "Rockford" E Mod 2K; "EAST TRUCKS" E Mod 2K; "Lake St" E Mod 2K; "Grand Ave" E Mod 2K;  
 12.000" Radius, 2.000" Border, Black on Yellow;  
 "EXIT" E Mod 2K; Down Arrow 22.000" 270"; "ONLY" E Mod 2K;  
 Table of distances between letter and object lefts.

37.000	78.000	10.000	46.000	8.500	11.625	9.625	17.375	9.250	10.125	10.500	10.375	9.500	8.000	12.125
18.500	C	h	i	c	a	g	o	171.000	0.000					
15.125	R	o	c	k	f	o	r	d	36.000	69.500				
160.500	L	a	k	e	s	t	7.000	47.500						
145.625	G	r	a	n	d	A	v	e	32.750					
73.625	E	x	i	t	44.000	O	N	L	Y	73.625				

WIDTH X HEIGHT	24' x 16'
MOUNTING	OVERHEAD
BACKGROUND	TYPE: Z2 SHEETING COLOR: GREEN - 3M 4097
LEGEND/BORDER	TYPE: Z2 SHEETING COLOR: WHITE - 3M 4090

\*\* SIGN DIMENSIONS ARE IN INCHES