

STATE OF ILLINOIS
DEPARTMENT OF TRANSPORTATION
DIVISION OF HIGHWAYS

**PROPOSED
HIGHWAY PLANS**

F.A.P. 344: (ILLINOIS ROUTE 83)
SECTION 540R-RS-3
ILLINOIS 64 TO ILLINOIS 19
RESURFACING (3P)
DUPAGE COUNTY

C-91-003-13

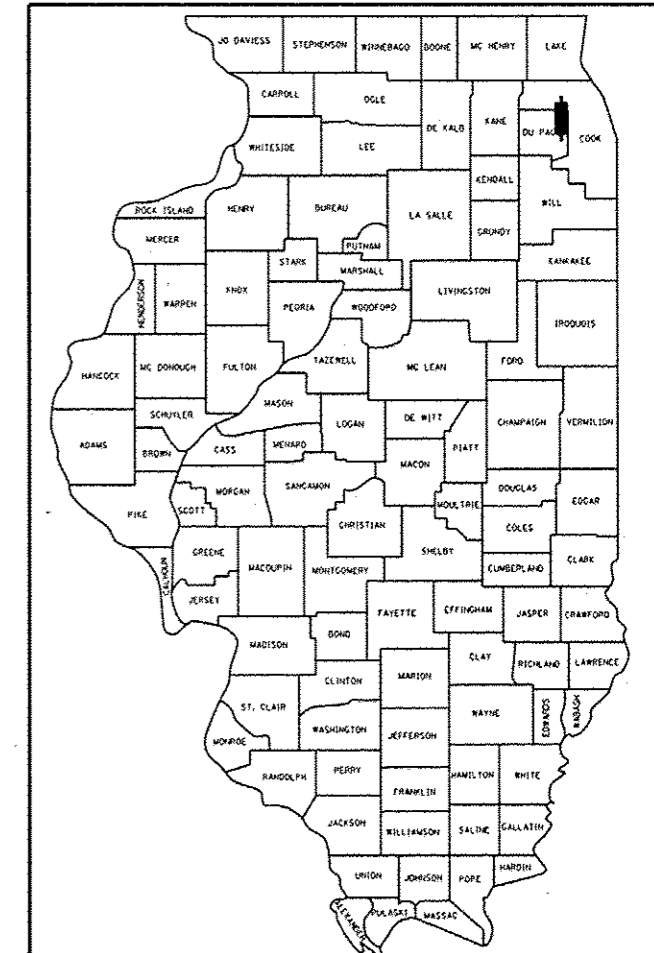
| F.A.P. RTE. | SECTION | COUNTY | TOTAL SHEETS | SHEET NO. |
|-------------|-----------|--------|--------------------|-----------|
| 344 | 540R-RS-3 | DUPAGE | 38 | 1 |
| ILLINOIS | | | CONTRACT NO. 60V54 | |

*38+1=39

FOR INDEX OF SHEETS, SEE SHEET NO. 2

PROJECT LOCATED WITHIN
THE CITY OF ELMHURST,
THE VILLAGE OF ADDISON,
THE CITY OF WOOD DALE, AND
THE VILLAGE OF BENSENVILLE

D-91-003-13



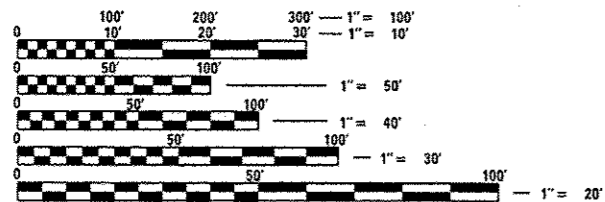
LOCATION OF SECTION INDICATED THUS: — ■ —

TRAFFIC DATA
IL ROUTE 83
SPEED LIMIT: 45 - 50 MPH
2011 ADT: 46600 - 53000

RESURFACING OMISSION
STA. 1049+56 TO STA. 1052+23

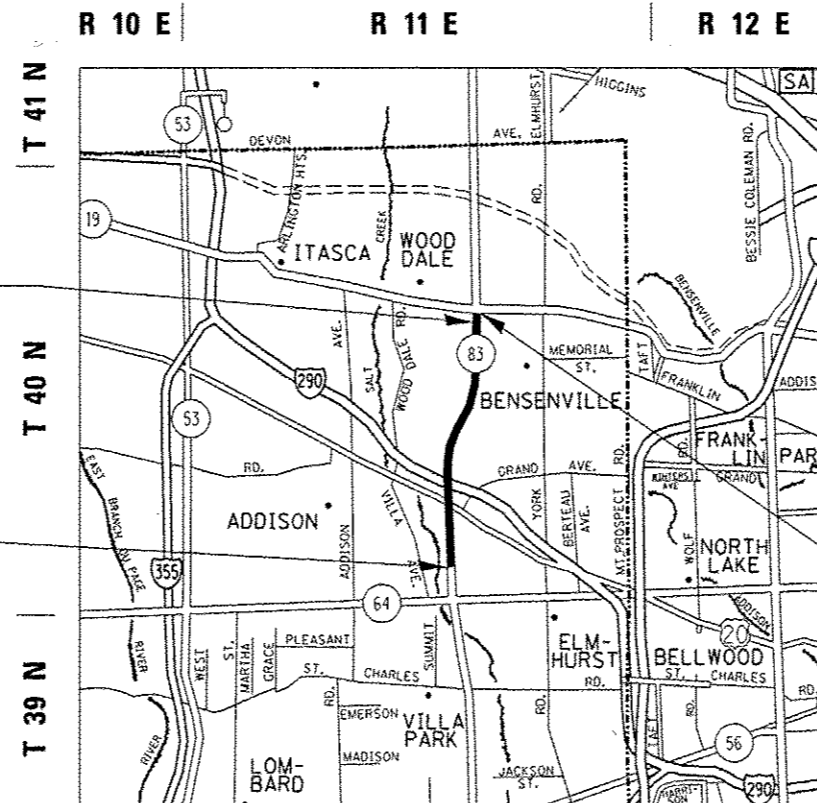
PROJECT BEGINS
STA. 869+87

PROJECT ENDS
STA. 1054+06



FULL SIZE PLANS HAVE BEEN PREPARED USING STANDARD
ENGINEERING SCALES. REDUCED SIZED PLANS WILL NOT
CONFORM TO STANDARD SCALES. IN MAKING MEASUREMENTS
ON REDUCED PLANS, THE ABOVE SCALES MAY BE USED.

J.U.L.I.E.
JOINT UTILITY LOCATION INFORMATION FOR EXCAVATION
1-800-892-0123
OR 811



ELK GROVE AND ADDISON TOWNSHIPS

GROSS LENGTH = 18419 FT. = 3.49 MILE

NET LENGTH = 18152 FT. = 3.44 MILE

PROJECT ENGINEER: DAN WILGREEN / (847) 705-4240

PROJECT MANAGER: KEN ENG / (847) 705-4247

CONTRACT NO. 60V54

STATE OF ILLINOIS
DEPARTMENT OF TRANSPORTATION
DIVISION OF HIGHWAYS

SUBMITTED February 14, 2013

John D. Baranzolli
DEPUTY DIRECTOR OF HIGHWAYS, REGION ENGINEER

March 22, 2013
John D. Baranzolli P.E.
ENGINEER OF DESIGN AND ENVIRONMENT

March 22, 2013
Omer Osman P.E.
DIRECTOR OF HIGHWAYS, CHIEF ENGINEER

PRINTED BY THE AUTHORITY
OF THE STATE OF ILLINOIS