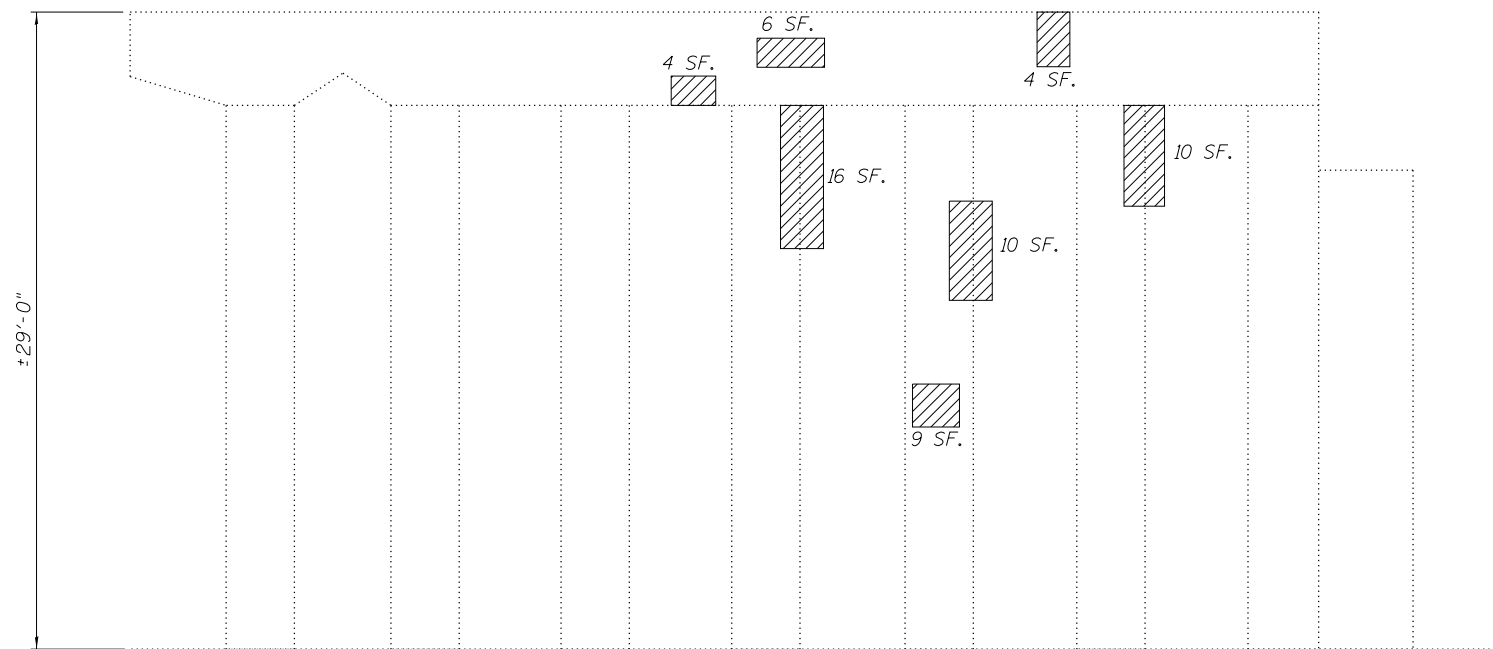


**PIER 15 SOUTH ELEVATION**  
(Looking North)

*Note:*  
Beams are numbered East to West.



**PIER 15 NORTH ELEVATION**  
(Looking South)

PIER 15 GIRDER REACTION TABLE		
	Span 15	Span 16
R <sub>DL</sub> (k)	46.1	46.1
R <sub>SDL</sub> (k)	13.7	13.7
R <sub>LL</sub> (k)	37.6	37.6
R <sub>T</sub> (k)	9.8	9.8
R <sub>Total</sub> (k)	107.2	107.2

*Note:*  
Due to variable girder type, spacing, and span, reactions provided are a general indication for the loads within the indicated span. Contractor shall verify loading at each shoring location. Cost included in pay item 'Temporary Shoring and Cribbing.'

**BILL OF MATERIAL**

SYMBOL	ITEM	UNIT	QUANTITY
	Structural Repair of Concrete, (Depth Equal To or Less Than 5")	Sq. Ft.	168
	Temporary Shoring and Cribbing	Each	1

USER NAME =	DESIGNED - AMS	REVISED -
DRAWN - DR	REVISIONS -	
PLOT SCALE =	CHECKED - JMH	REVISED -
PLOT DATE =	DATE - DECEMBER 2012	REVISED -

F.A.I. R.E. 90/94	SECTION 2012-055BR	COUNTY COOK	TOTAL SHEETS 107	SHEET NO. 85
ILLINOIS FED. AID PROJECT			CONTRACT NO. 60V58	