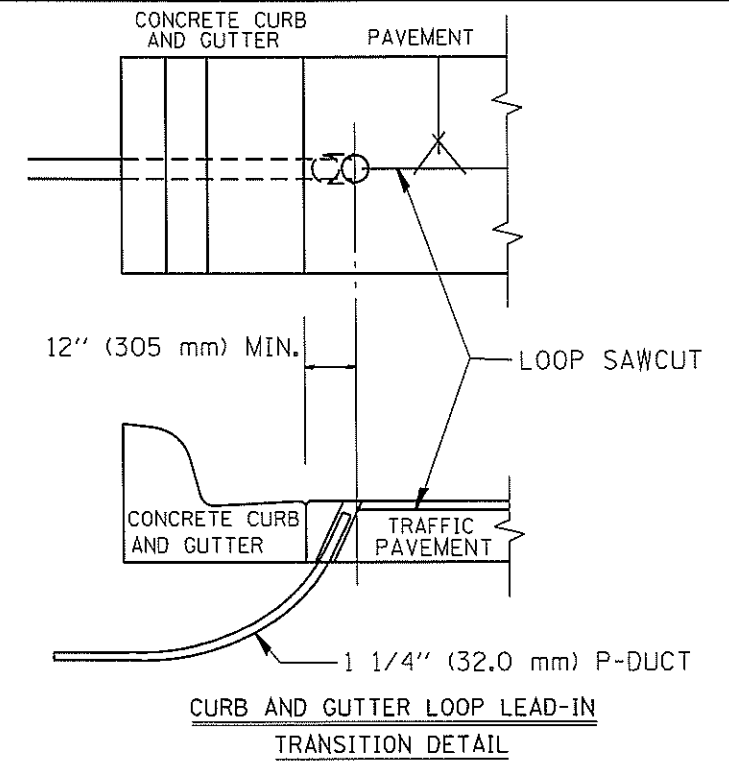
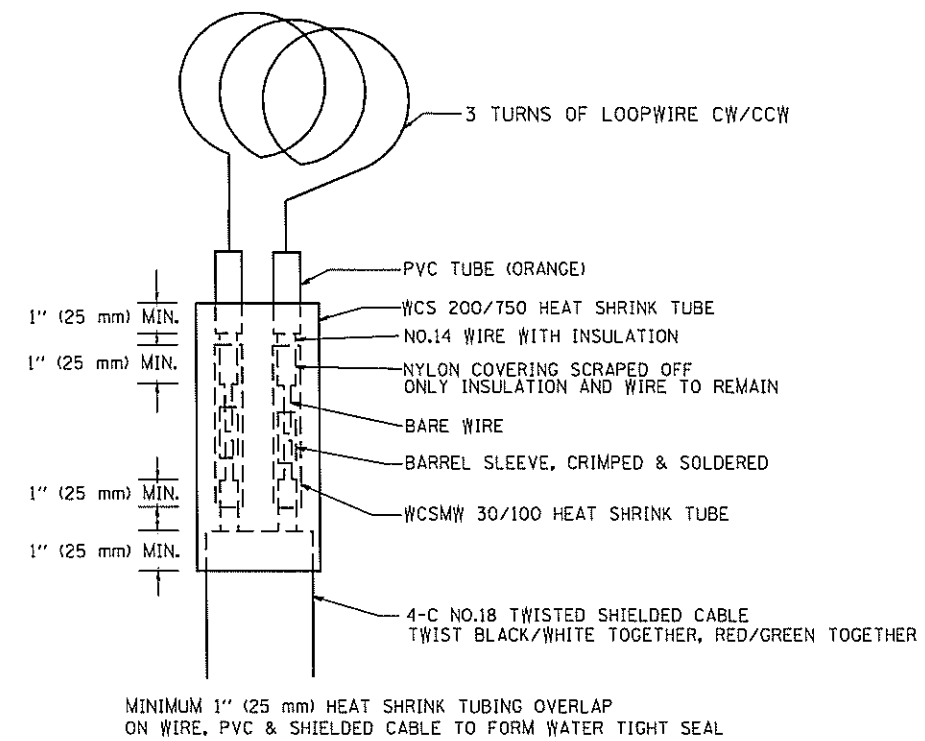


TYPICAL 6FT. (1.83 m) DIA. INDUCTION LOOP CORE DRILL  
LAYOUT FOR MULTIPLE LANE ROADWAY

TYPICAL 6FT. (1.83 m) DIA. INDUCTION LOOP CORE DRILL  
LAYOUT FOR MULTIPLE LANE ROADWAY



CURB AND GUTTER LOOP LEAD-IN  
TRANSITION DETAIL



LOOP SPLICING REQUIREMENTS

FOR INFORMATION ONLY

NOTES

1. EACH LOOP SHALL BE SPLICED TO A 4-C NO.18 TWISTED SHIELDED LEAD IN WHEN 150FT. (45 m) OR MORE FROM CABINET.
2. LOOPS SHALL BE SPLICED IN HANDHOLES ONLY, OTHERWISE WRITTEN PERMISSION SHALL BE OBTAINED FROM TSC ENGINEER.
3. LOOPS SHALL NOT BE SPLICED IN SERIES.
4. EACH LOOP LEAD IN SHALL BE IDENTIFIED AND PERMANENTLY COLOR CODED IN THE COREHOLE, HANDHOLE & CABINETS THRU WHICH THEY ENTER OR PASS AND TAGGED WITH THE CORRECT NOMENCLATURES.

CONTRACT 60V58

FILE NAME * C:\Projects\TSC\TYPICALS\TSC17P88.dgn	USER NAME * mazog	DESIGNED - R.L.	REVISED - 6/94	<b>STATE OF ILLINOIS</b> <b>DEPARTMENT OF TRANSPORTATION</b> TRAFFIC SYSTEMS CENTER	<b>EXISTING</b> <b>ROUND INDUCTION LOOP</b> <b>TYPICALS</b>	F.A. RTE.	SECTION 2012-055BR	COUNTY	TOTAL SHEETS 107	SHEET NO. 99FB	
PLOT SCALE = 100.0000 ' / IN.	CHECKED - R.L.	REVISED - 10/96	SCALE: NONE			SHEET NO. OF SHEETS	STA. TO STA.	CONTRACT NO.		FED. ROAD DIST. NO.	ILLINOIS FED. AID PROJECT
PLOT DATE = 12/2/2010	DATE - 6-22-94	REVISED -									

TRAFFIC SYSTEMS CENTER (TY-1TSC-418#2)