

FOR INDEX OF SHEETS, SEE SHEET NO. 2

FOR LIST OF HIGHWAY STANDARDS, SEE SHEET NO. 2

ROADWAY CLASSIFICATION

PROSPECT STREET LOCAL COLLECTOR
 U.S. ROUTE 20 STRATEGIC REGIONAL ARTERIAL
 IL. ROUTE 176 PRINCIPAL ARTERIAL

TRAFFIC DATA (2030)

ADT:
 PROSPECT STREET 6,520 VPD
 U.S. ROUTE 20 19,397 VPD
 U.S. ROUTE 176 11,899 VPD

SPEED POSTED

PROSPECT STREET 30
 U.S. ROUTE 20 30
 IL. ROUTE 176 45

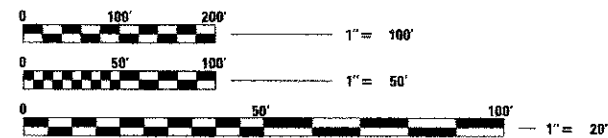
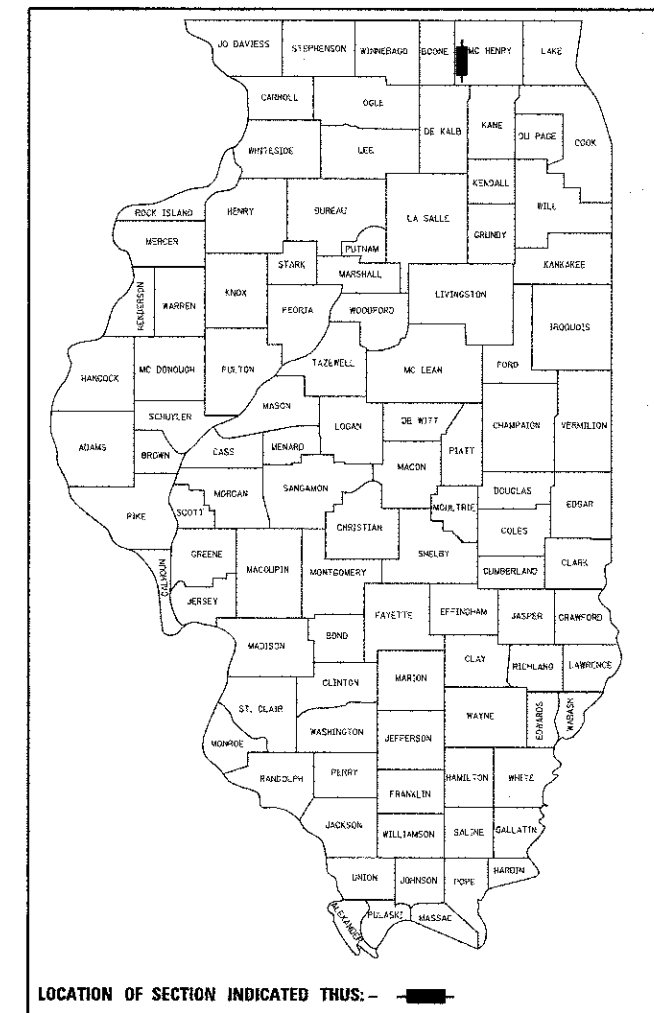
PROJECT LOCATED IN THE CITY OF MARENGO

STATE OF ILLINOIS
 DEPARTMENT OF TRANSPORTATION
 DIVISION OF HIGHWAYS

**PLANS FOR PROPOSED
 FEDERAL AID HIGHWAY**


FAU 4087 (PROSPECT STREET),
 FROM FAP 533 (ILLINOIS ROUTE 176) TO FAP 525 (U.S. ROUTE 20)
 RECONSTRUCTION AND TRAFFIC SIGNAL
 SECTION 98-00024-00-WR
 PROJECT M-4003(185)
 McHENRY COUNTY
 C-91-256-13

F.A.U. RTE.	SECTION	COUNTY	TOTAL SHEETS	SHEET NO.
4087	98-00024-00-WR	McHENRY	115	1
FED. ROAD DIST. NO.	ILLINOIS	CONTRACT NO. 63532		



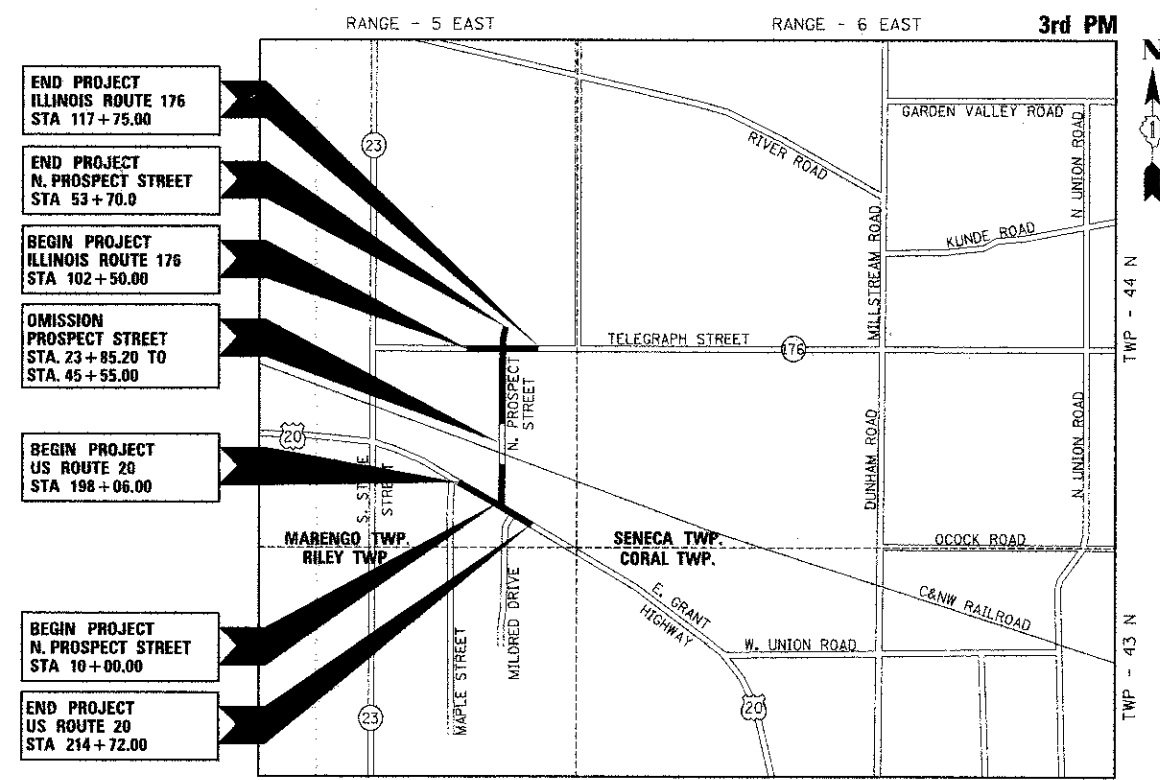
FULL SIZE PLANS HAVE BEEN PREPARED USING STANDARD ENGINEERING SCALES. REDUCED SIZED PLANS WILL NOT CONFORM TO STANDARD SCALES. IN MAKING MEASUREMENTS ON REDUCED PLANS, THE ABOVE SCALES MAY BE USED.

J.U.L.I.E. JOINT UTILITY LOCATION INFORMATION FOR EXCAVATION CALL 811





420 NORTH FRONT STREET, SUITE 100 | McHENRY, ILLINOIS 60060
 Phone: 815.385.1778 | Toll Free: 800.728.7905 | Fax: 815.395.1774 | HRGreen.com
 ILLINOIS PROFESSIONAL DESIGN FIRM #194-01322

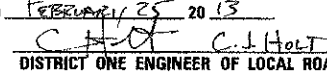
PROJECT MANAGER: TED HAMILTON
 CITY ENGINEER: DAVID C. JOHANSON
 CONTRACT NO. 63532




LOCATION MAP
 (NOT TO SCALE)
 PROJECT GROSS LENGTH: 7586 FT. (1.44 MI)
 PROJECT NET LENGTH: 5391 FT. (1.02 MI)
 PROSPECT STREET SOUTH = 1385 FT. (0.26 MI) U.S. ROUTE 20 = 1666 FT. (0.32 MI)
 PROSPECT STREET NORTH = 815 FT. (0.15 MI) U.S. ROUTE 176 = 1525 FT. (0.29 MI)

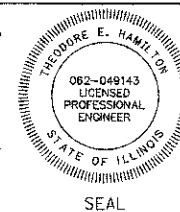
STATE OF ILLINOIS
 DEPARTMENT OF TRANSPORTATION
 DIVISION OF HIGHWAYS


APPROVED February 4, 2013

 CITY ENGINEER
 CITY OF MARENGO

PASSED February 25, 2013

 DISTRICT ONE ENGINEER OF LOCAL ROADS AND STREETS

RELEASING FOR BID BASED ON LIMITED REVIEW February 27, 2013

 DEPUTY DIRECTOR OF HIGHWAYS, REGION ONE ENGINEER

PROFESSIONAL ENGINEER'S SIGN & SEAL




 THEODORE E. HAMILTON, P.E.
 EXPIRES: 11-30-13

PRINTED BY THE AUTHORITY OF THE STATE OF ILLINOIS

PROGRAM AND OFFICE ENGINEER: CHARLES F. RIDDLE, P.E. 847-705-4406 SCHAUMBURG, IL.