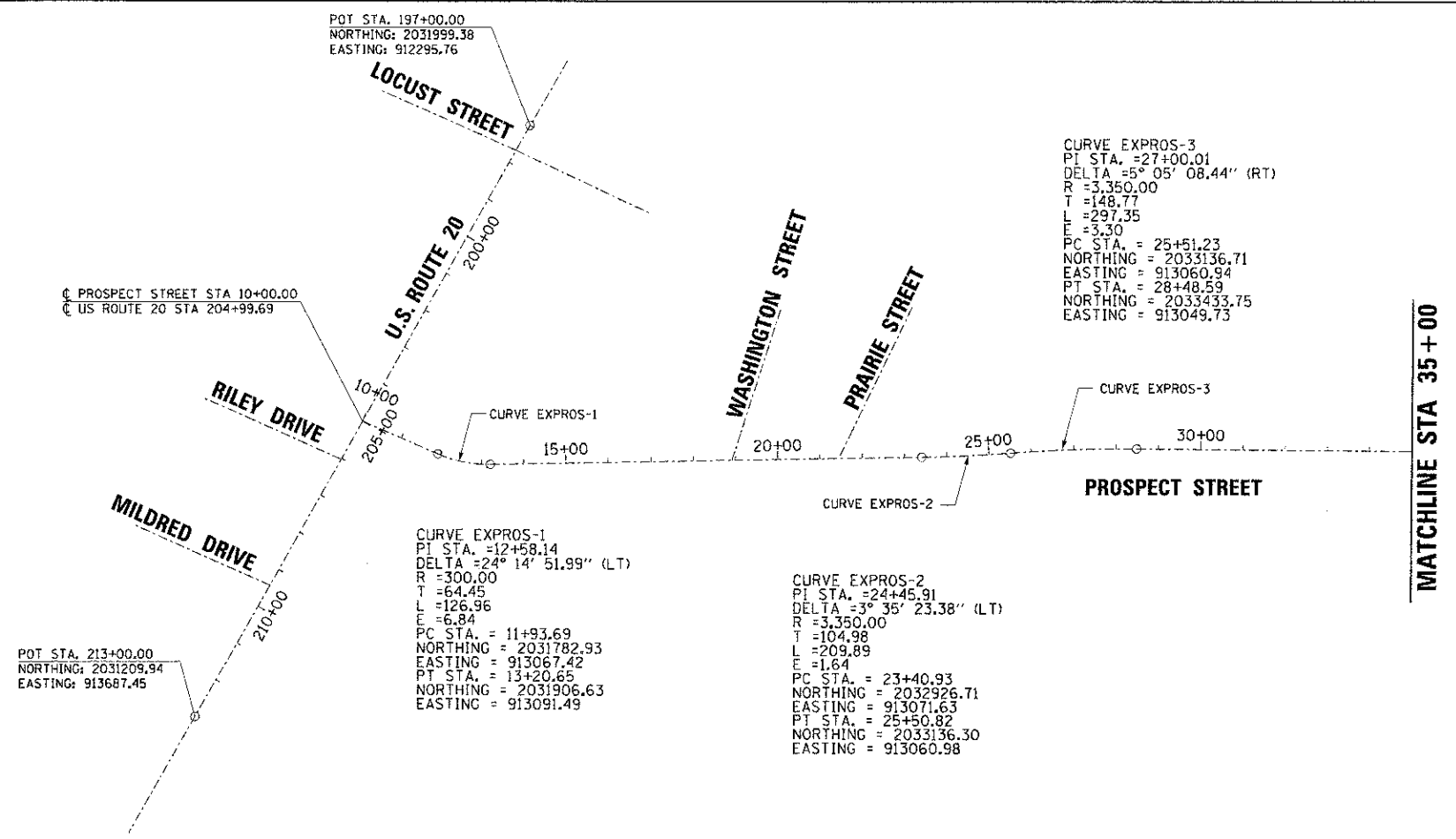


DATE	
BY	
DATE	
BY	
DATE	
BY	
DATE	
BY	
DATE	
BY	

DATE	
BY	
DATE	
BY	
DATE	
BY	
DATE	
BY	
DATE	
BY	

COMPANY NAME: HRGreen
 PROJECT CONTRACT: 98-0024-00-WR
 DATE: 2/8/2013 12:58:11 PM
 FILE NAME: 635_1101.dwg
 PLOT DRIVER: pdfcvt
 PEN TABLE: standard.ctb



CURVE EXPROS-3
 PI STA. = 27+00.01
 DELTA = 5° 05' 08.44" (RT)
 R = 3,350.00
 T = 148.77
 L = 297.35
 E = 3.30
 PC STA. = 25+51.23
 NORTHING = 2033136.71
 EASTING = 913060.94
 PT STA. = 28+48.59
 NORTHING = 2033433.75
 EASTING = 913049.73

CURVE EXPROS-1
 PI STA. = 12+58.14
 DELTA = 24° 14' 51.99" (LT)
 R = 300.00
 T = 64.45
 L = 126.96
 E = 6.84
 PC STA. = 11+93.69
 NORTHING = 2031782.93
 EASTING = 913067.42
 PT STA. = 13+20.65
 NORTHING = 2031906.63
 EASTING = 913091.49

CURVE EXPROS-2
 PI STA. = 24+45.91
 DELTA = 3° 35' 23.38" (LT)
 R = 3,350.00
 T = 104.98
 L = 209.89
 E = 1.64
 PC STA. = 23+40.93
 NORTHING = 2032926.71
 EASTING = 913071.63
 PT STA. = 25+50.82
 NORTHING = 2033136.30
 EASTING = 913060.98

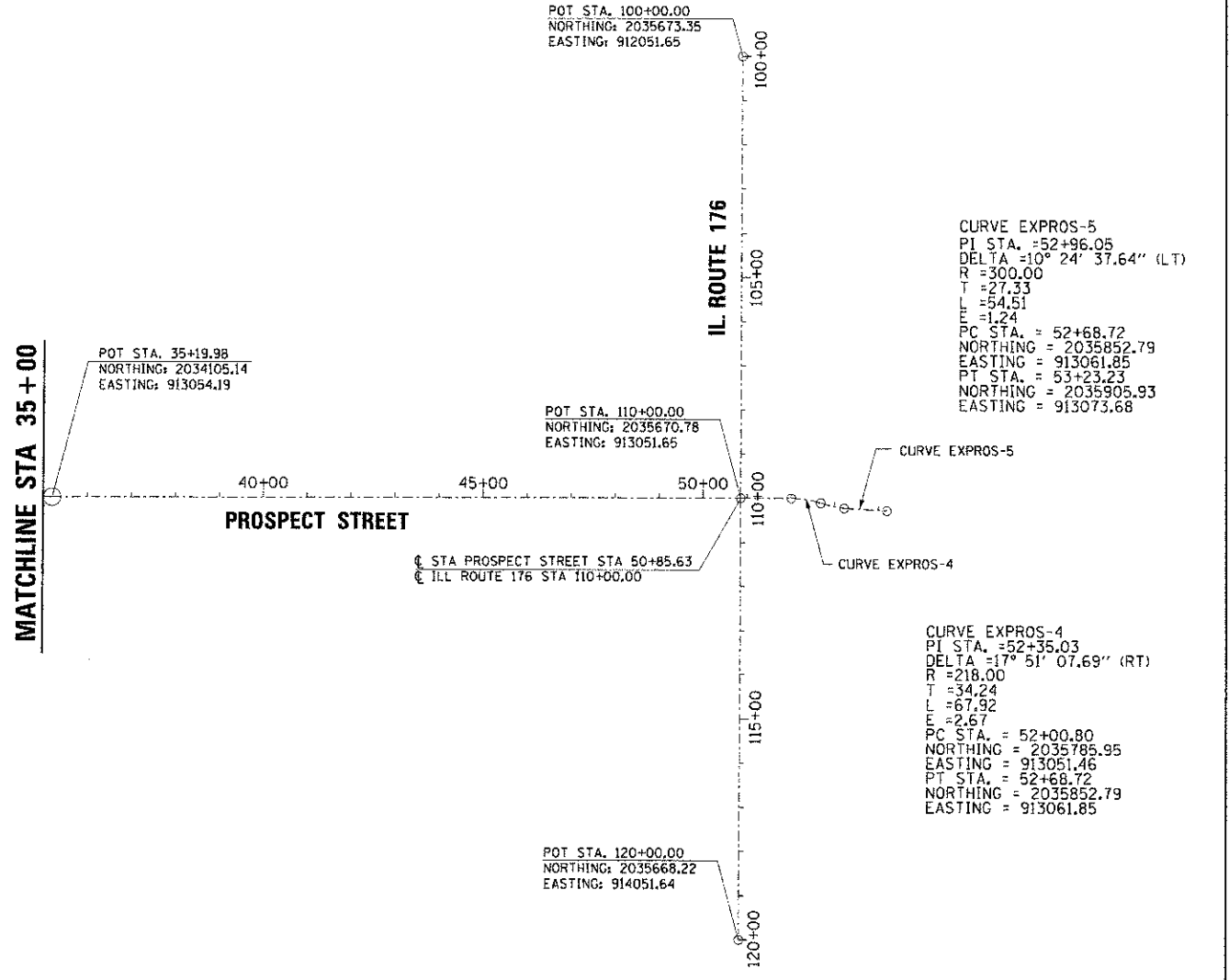
BENCHMARKS

BENCHMARK NO. 33:
 NORTH (TAG) BOLT ON HYDRANT LOCATED ON THE NORTH SIDE OF ROUTE 20 ACROSS FROM RILEY DRIVE.
 ELEVATION = 829.52 NAVD88

BENCHMARK NO 34:
 RAILROAD SPIKE IN THE EAST FACE OF THE WOOD POWER POLE LOCATED AT THE SOUTHWEST CORNER OF PROSPECT STREET AND PRAIRIE STREET.
 ELEVATION = 819.26 NAVD88

BENCHMARK NO 35:
 RAILROAD SPIKE IN THE NORTH FACE OF THE WOOD POWER POLE LOCATED AT THE SOUTHWEST CORNER OF PROSPECT STREET AND GREENLEE STREET.
 ELEVATION = 812.18 NAVD88

BENCHMARK NO. 14:
 ARROW BOLT ON HYDRANT LOCATED AT THE NORTHEAST CORNER OF ROUTE 176 AND PROSPECT STREET.
 ELEVATION = 813.12 NAVD88



CURVE EXPROS-5
 PI STA. = 52+96.05
 DELTA = 10° 24' 37.64" (LT)
 R = 300.00
 T = 27.33
 L = 54.51
 E = 1.24
 PC STA. = 52+68.72
 NORTHING = 2035852.79
 EASTING = 913061.85
 PT STA. = 53+23.23
 NORTHING = 2035905.93
 EASTING = 913073.68

CURVE EXPROS-4
 PI STA. = 52+35.03
 DELTA = 17° 51' 07.69" (RT)
 R = 218.00
 T = 34.24
 L = 67.92
 E = 2.67
 PC STA. = 52+00.80
 NORTHING = 2035785.95
 EASTING = 913051.46
 PT STA. = 52+68.72
 NORTHING = 2035852.79
 EASTING = 913061.85

STATE OF ILLINOIS
 DEPARTMENT OF TRANSPORTATION

ALIGNMENT, TIES, AND BENCHMARKS

USER NAME = spornal	DESIGNED DCJ	REVISED -
	DRAWN SMP	REVISED -
PLOT SCALE = 1" = 200'	CHECKED - TEH	REVISED -
PLOT DATE = 2/8/2013	DATE - 2/5/13	REVISED -

SCALE: 1" = 200' SHEET NO. 1 OF 1 SHEETS STA. TO STA.

F.A.U. RTE.	SECTION	COUNTY	TOTAL SHEETS	SHEET NO.
4087	98-0024-00-WR	MCHENRY	115	22
CONTRACT NO.			63532	
FED. ROAD DIST. NO. ILLINOIS FED. AID PROJECT				

