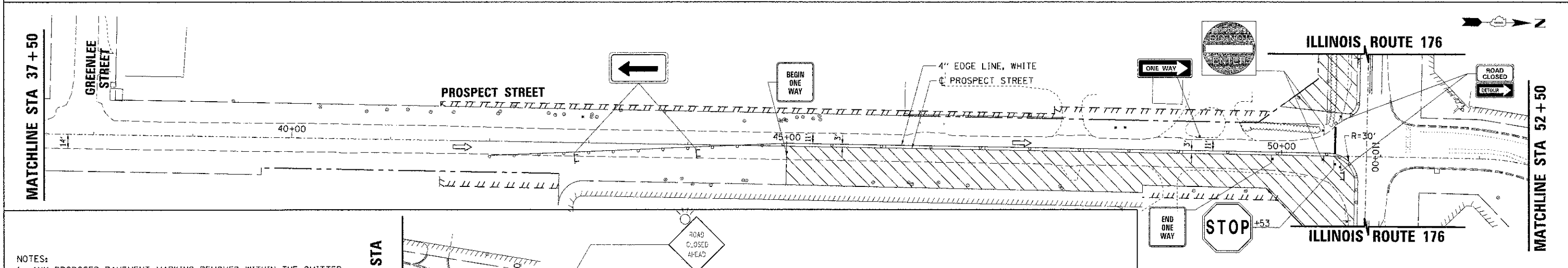
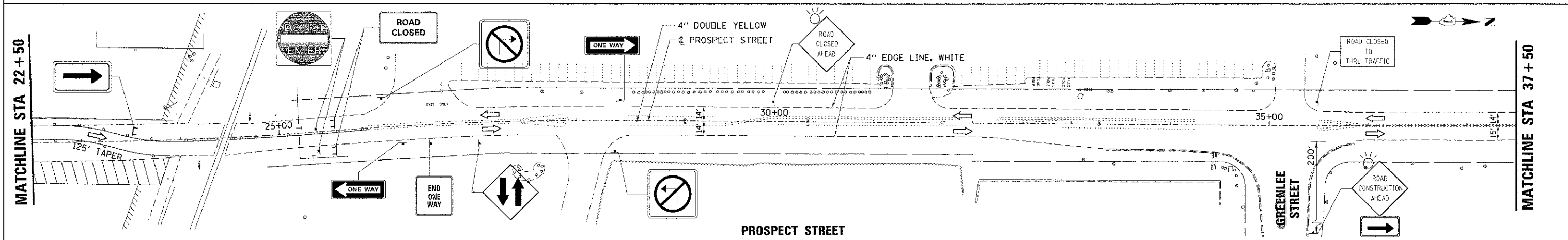
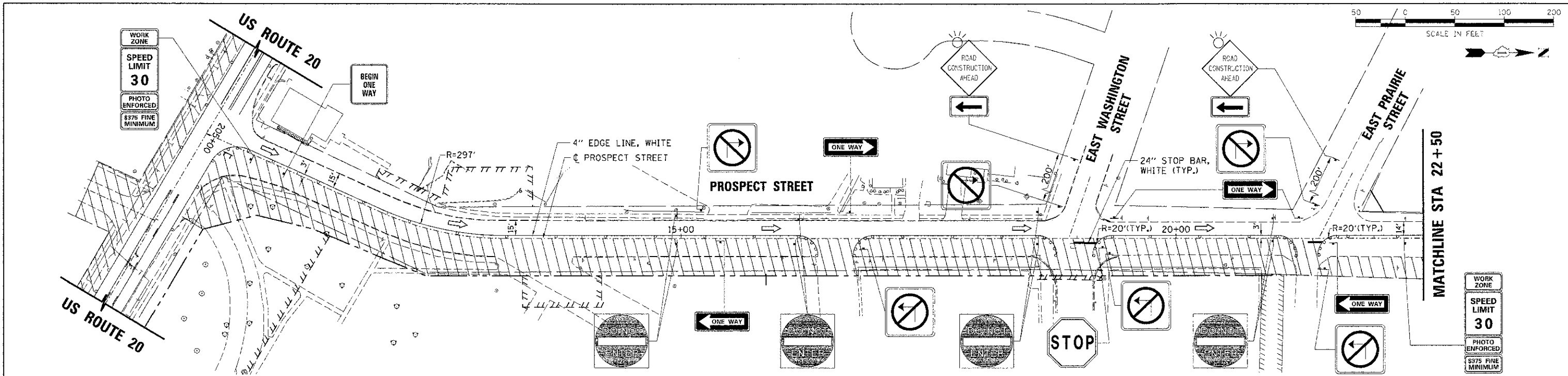


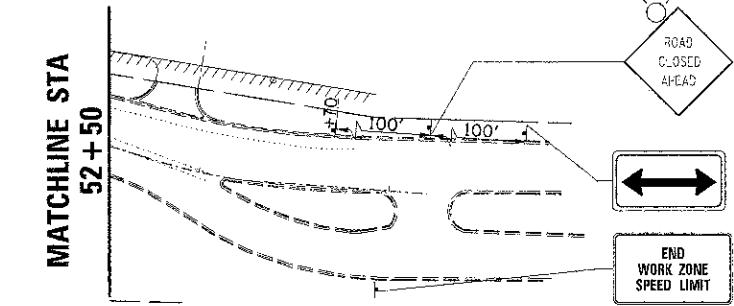
DATE	
BY	
PROJECT NO.	
DATE	
BY	
PROJECT NO.	
DATE	
BY	
PROJECT NO.	

DATE	
BY	
PROJECT NO.	
DATE	
BY	
PROJECT NO.	
DATE	
BY	
PROJECT NO.	

2/8/2013 10:01:55 AM  
 638.mol.sral.02.dwg  
 pdr.jy.wat  
 s:\projects\11-09-13\11-09-13.tbl



NOTES:  
 1. ANY PROPOSED PAVEMENT MARKING REMOVED WITHIN THE OMITTED AREA OF THE PROJECT (STA 23+85.20 TO STA 45+55.00) SHALL BE REPLACED BY THE CONTRACTOR DURING FINAL PAVEMENT MARKING INSTALLATION.  
 2. TWO-WAY TRAFFIC SHALL BE MAINTAINED FOR BUSINESSES ON PROSPECT STREET FROM STA. 26+00 TO STA. 38+00.



**LEGEND**

WORK ZONE AREA	PROVIDE 10' GAPS IN CURB & GUTTER FOR DRAINAGE
DRUM OR BARRICADE WITH STEADY BI-DIRECTIONAL LIGHT *	* DRUM OR BARRICADE SPACING: 50' C-C TANGENTS 20' C-C TAPERS OR LANE SHIFTS 25' C-C RADII
SIGN ON PORTABLE OR PERMANENT SUPPORT	
TYPE III BARRICADES WITH TWO (2) FLASHING LIGHTS	