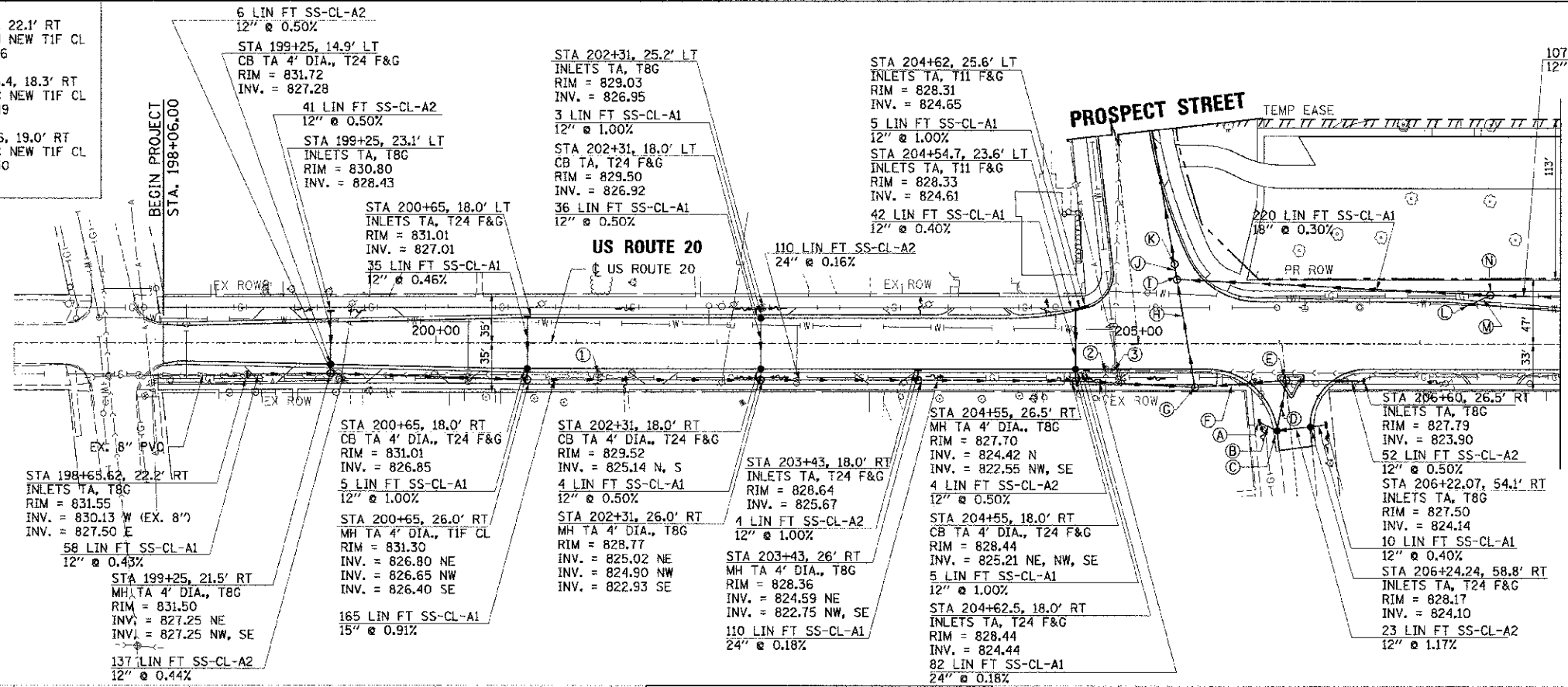


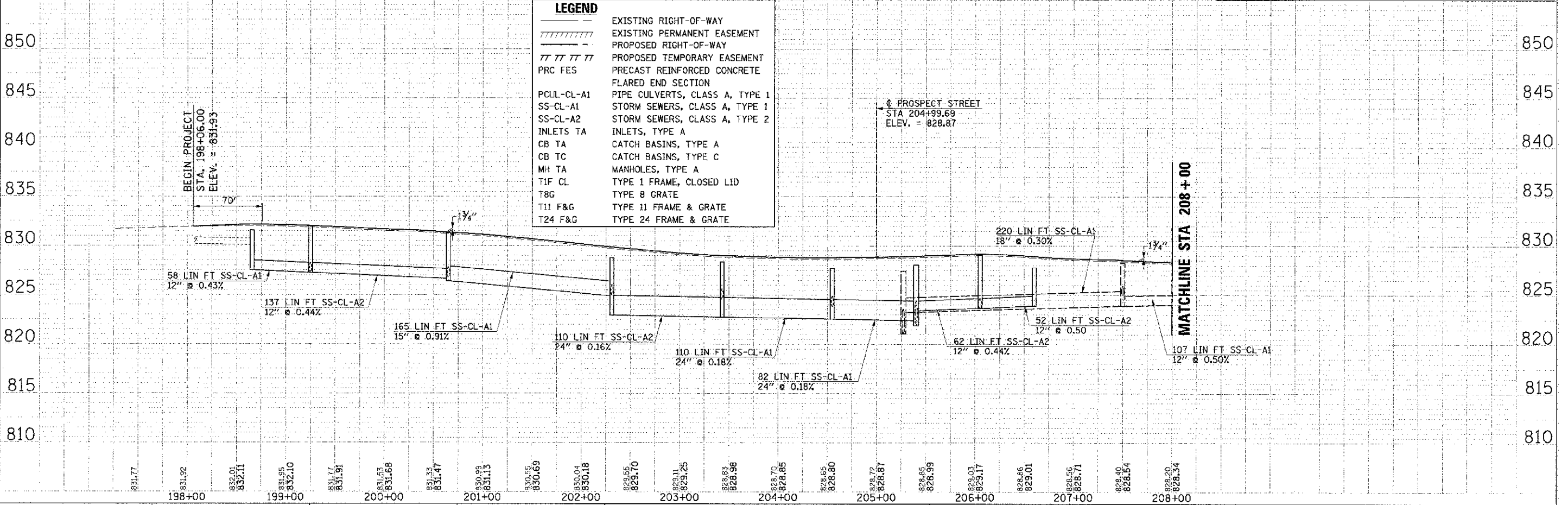
- 1 STA 201+15, 22.1' RT
SAN MH ADJ NEW TIF CL
RIM = 831.06
- 2 STA 204+46.4, 18.3' RT
SAN MH REC NEW TIF CL
RIM = 828.49
- 3 STA 20482.6, 19.0' RT
SAN MH REC NEW TIF CL
RIM = 828.50



- | | |
|---|---|
| A STA 205+86, 56' RT
INLETS TA, T8G
RIM = 827.50
INV. = 823.89 | H 74 LIN FT SS-CL-A2
30" @ 0.20% |
| B 12 LIN FT SS-CL-A1
12" @ 0.50% | I STA 205+27, 45.9' LT
MH TA 5' DIA., TIF CL
RIM = 827.44
INV. = 823.23 SE
INV. = 821.85 S |
| C STA 205+98, 62' RT
CB TA 4' DIA., T24 F&G
RIM = 828.22
INV. = 823.83 NW, E, NE | J 7 LIN FT SS-CL-A2
30" @ 1.00% |
| D 35 LIN FT SS-CL-A2
12" @ 0.46% | K STA 205+25, 56.8' LT
PR RESTRICTOR STRUCTURE
(SEE DETAIL)
RIM = 827.23
INV. = 821.00 SW, NE
12" ORIFICE @ INV. = 821.00
TOP OF PLATE ELEV. = 823.40
REOD. 10-YR STORAGE = 2,260 CU FT
PROV. 10-YR STORAGE = 2,728 CU FT |
| E STA 206+05, 26' RT
MH TA 4' DIA., TIF CL
RIM = 829.10
INV. = 823.67 W, E, SW | L STA 207+37, 36.8' LT
INLETS TA, T24 F&G
RIM = 828.04
INV. = 825.04 |
| F 62 LIN FT SS-CL-A2
12" @ 0.44% | M 13 LIN FT SS-CL-A1
12" @ 1.00% |
| G STA 205+40, 31' RT
MH TA 5' DIA., TIF CL
(TIF CL TO MEET
ADA REQUIREMENTS)
RIM = 826.05
INV. = 822.40 NW
INV. = 823.40 SE
INV. = 822.00 NE | N STA 207+50, 34.8' LT
MH TA 4' DIA., TIF CL
RIM = 828.28
INV. = 824.93 W
INV. = 823.89 SE, NW |

LEGEND

---	EXISTING RIGHT-OF-WAY
	EXISTING PERMANENT EASEMENT
- - - -	PROPOSED RIGHT-OF-WAY
	PROPOSED TEMPORARY EASEMENT
PRC FES	PRECAST REINFORCED CONCRETE FLARED END SECTION
PCUL-CL-A1	PIPE CULVERTS, CLASS A, TYPE 1
SS-CL-A1	STORM SEWERS, CLASS A, TYPE 1
SS-CL-A2	STORM SEWERS, CLASS A, TYPE 2
INLETS TA	INLETS, TYPE A
CB TA	CATCH BASINS, TYPE A
CB TC	CATCH BASINS, TYPE C
MH TA	MANHOLES, TYPE A
TIF CL	TYPE 1 FRAME, CLOSED LID
T8G	TYPE 8 GRATE
T11 F&G	TYPE 11 FRAME & GRATE
T24 F&G	TYPE 24 FRAME & GRATE



DATE	
BY	
CHECKED	
DESIGNED	
PROJECT	
PLANT	
NOTE BOOK	
ALLOWED FOR CONSTRUCTION	
NO. 1	
NO. 2	
NO. 3	
NO. 4	
NO. 5	
NO. 6	
NO. 7	
NO. 8	
NO. 9	
NO. 10	
NO. 11	
NO. 12	
NO. 13	
NO. 14	
NO. 15	
NO. 16	
NO. 17	
NO. 18	
NO. 19	
NO. 20	

DATE	
BY	
CHECKED	
DESIGNED	
PROJECT	
PLANT	
NOTE BOOK	
ALLOWED FOR CONSTRUCTION	
NO. 1	
NO. 2	
NO. 3	
NO. 4	
NO. 5	
NO. 6	
NO. 7	
NO. 8	
NO. 9	
NO. 10	
NO. 11	
NO. 12	
NO. 13	
NO. 14	
NO. 15	
NO. 16	
NO. 17	
NO. 18	
NO. 19	
NO. 20	

COMPANY NAME: HRCGreen.com
 PROJECT CONTACT: [Name]
 DATE: 2/21/2013 3:06:09 PM
 FILE NAME: 63636.dwg
 PLOT DRIVER: pldt_vr14
 PEN: 4545