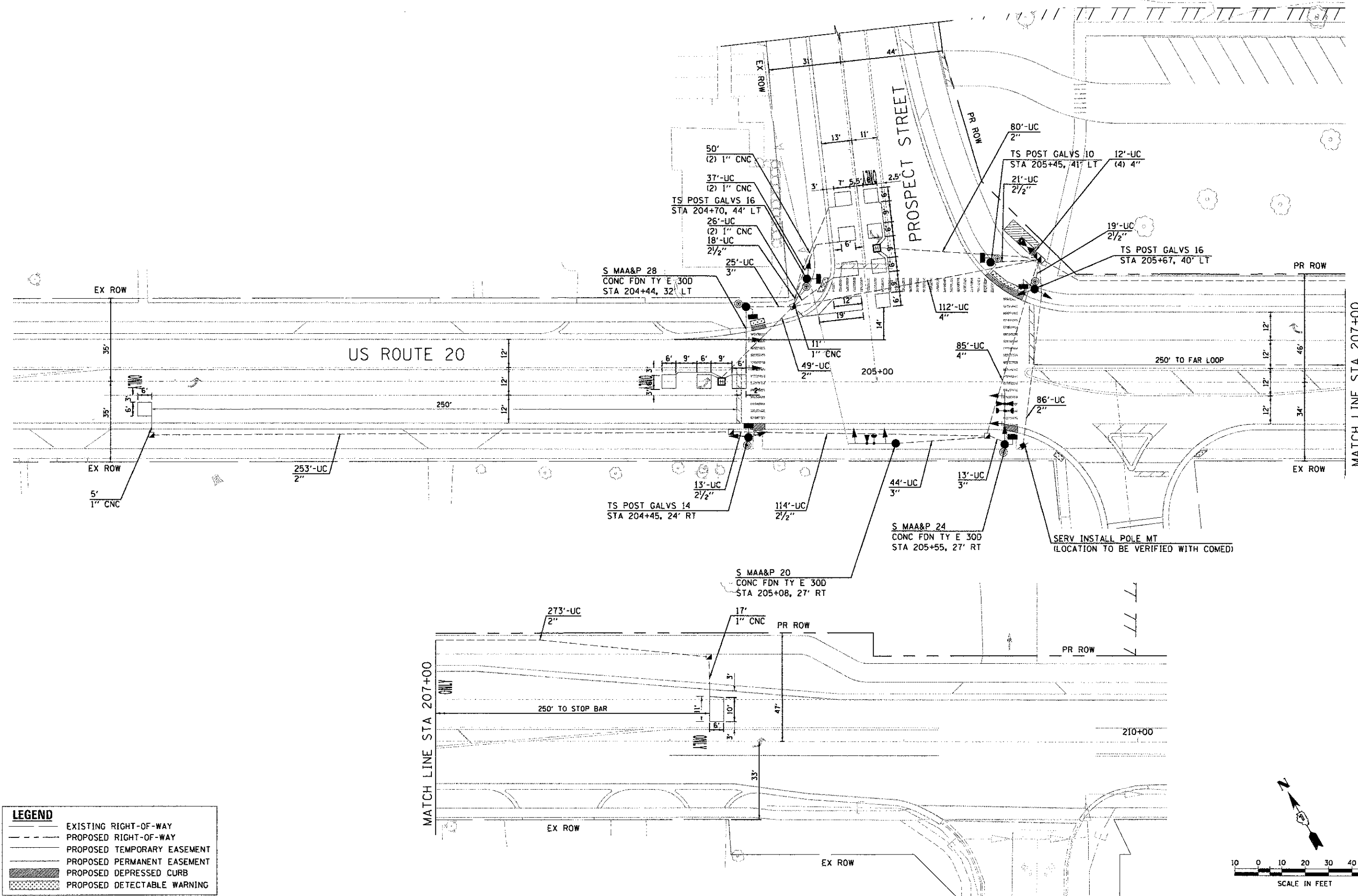


DATE	
BY	
REVISION	
PLAN	
NOTE BOOK	
NO.	

DATE	
BY	
REVISION	
PROFILE	
NOTE BOOK	
NO.	

3/22/2013 11:59:58 AM  
 539-5900b-us0203gn  
 2013\_14221  
 2862.37/total of 7 rows - Copy 7/8



**LEGEND**

	EXISTING RIGHT-OF-WAY
	PROPOSED RIGHT-OF-WAY
	PROPOSED TEMPORARY EASEMENT
	PROPOSED PERMANENT EASEMENT
	PROPOSED DEPRESSED CURB
	PROPOSED DETECTABLE WARNING

USER NAME	sparnal
DESIGNED	JJS
REVIS	-
DRAWN	JJS
REVIS	-
CHECKED	TEH
REVIS	-
DATE	2/5/13
REVIS	-

**STATE OF ILLINOIS  
 DEPARTMENT OF TRANSPORTATION**

**TRAFFIC SIGNAL INSTALLATION PLAN  
 U.S. ROUTE 20 AT PROSPECT STREET**

SCALE: 1" = 20' SHEET NO. 1 OF 3 SHEETS STA. 200+50.00 TO STA. 210+00.00

F.A.U. RTE.	SECTION	COUNTY	TOTAL SHEETS	SHEET NO.
40B7	98-0024-00-WR	MCHENRY	115	65
FED. ROAD DIST. NO.	ILLINOIS FED. AID PROJECT			
			CONTRACT NO.	63532



HRGreen.com  
 Illinois Professional Design Firm  
 #194-001922