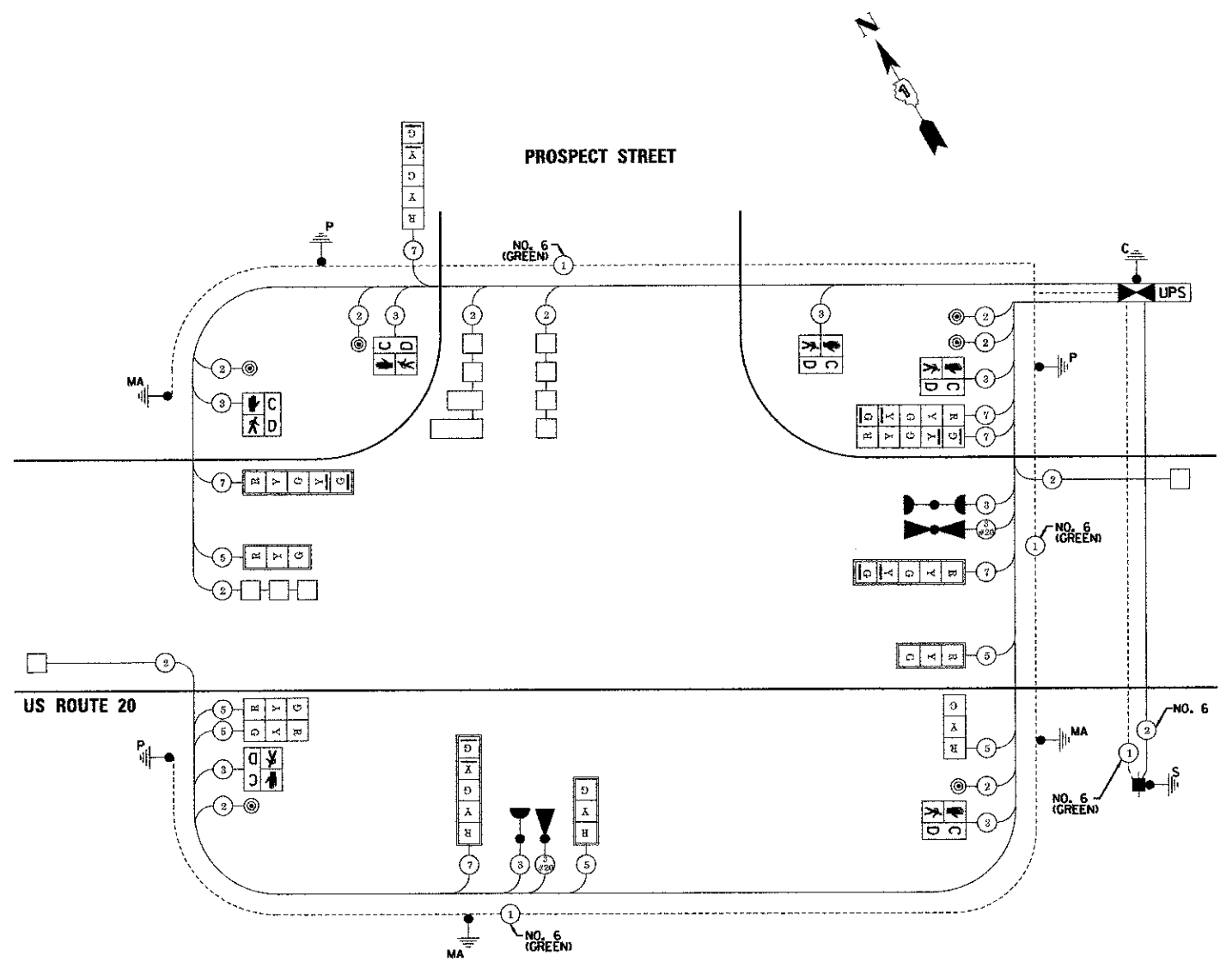


PLAN	SURVEYED	DATE
	PLOTTED	BY
	NOTED	
	REVISIONS	
	NO. OF MAY CHECKED	
	CADD FILE NAME	

PROFILE	SURVEYED	DATE
	PLOTTED	BY
	NOTED	
	REVISIONS	
	NO. OF MAY CHECKED	
	CADD FILE NAME	

2/26/2013 2:38:28 PM  
 2/26/2013 2:38:28 PM  
 2/26/2013 2:38:28 PM  
 2/26/2013 2:38:28 PM



**CABLE PLAN**

**NOTE:**  
 THE EMERGENCY VEHICLE PREEMPTION EQUIPMENT FOR THIS PROJECT SHALL BE OPTICOM OR AN APPROVED EQUAL.

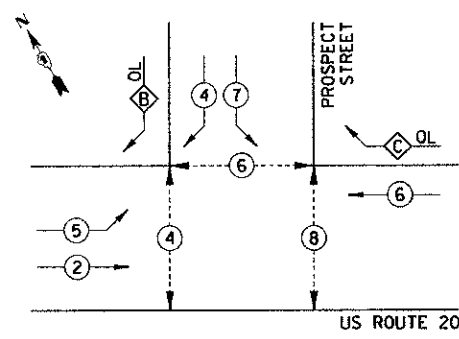
**NOTE:**  
 THE TRAFFIC SIGNAL CONTROL EQUIPMENT FOR THIS PROJECT SHALL BE "ECONOLITE" TO MATCH THE EXISTING ADJACENT SYSTEM.

TYPE	NO. LAMPS	WATTAGE		% OPERATION	TOTAL WATTAGE
		INCAND.	LED		
SIGNAL (RED)	12		17	0.50	102.00
(YELLOW)	12		25	0.25	75.00
(GREEN)	12		15	0.25	45.00
ARROW	12		12	0.10	14.40
PEDESTRIAN SIGNAL	6		25	1.00	150.00
CONTROLLER	1		100	1.00	100.00
UPS	1		25	1.00	25.00
<b>TOTAL =</b>					<b>501.40</b>

ENERGY COSTS TO: ILLINOIS DEPARTMENT OF TRANSPORTATION  
 210 W. CENTER COURT  
 SCHAMBURG, IL 60196

ENERGY SUPPLY CONTACT: MIKE LENOX  
 PHONE: (815) 490-2896  
 COMPANY: COMMONWEALTH EDISON

**CONTROLLER SEQUENCE**

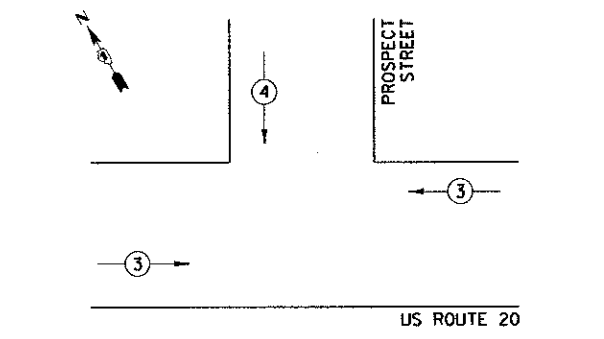


**PHASE DESIGNATION DIAGRAM**

OVERLAP PHASE	PERMISSIVE PHASE	PROTECTED PHASE
B =	4 +	5
C =	6 +	7

← ⊕ →	DUAL ENTRY PHASE
← ⊕	SINGLE ENTRY PHASE
⊕	OVERLAP
*	NUMBER REFERRING TO ASSOCIATED PHASE
← ⊕ →	PEDESTRIAN PHASE

**EMERGENCY VEHICLE PREEMPTION SEQUENCE**



PROPOSED EMERGENCY VEHICLE PREEMPTORS	3	4
MOVEMENT	←	↓

**SCHEDULE OF QUANTITIES**

CODE NUMBER	ITEM	UNIT	TOTAL
7200100	SIGN PANEL - TYPE 1	SQ FT	16.50
7200200	SIGN PANEL - TYPE 2	SQ FT	12.50
8050020	SERVICE INSTALLATION - POLE MOUNTED	EACH	1
81028200	UNDERGROUND CONDUIT, GALVANIZED STEEL, 2" DIA.	FOOT	741.0
81028210	UNDERGROUND CONDUIT, GALVANIZED STEEL, 2 1/2" DIA.	FOOT	185.0
81028220	UNDERGROUND CONDUIT, GALVANIZED STEEL, 3" DIA.	FOOT	82.0
81028240	UNDERGROUND CONDUIT, GALVANIZED STEEL, 4" DIA.	FOOT	245.0
81400100	HANDHOLE	EACH	5
81400200	HEAVY-DUTY HANDHOLE	EACH	2
81400300	DOUBLE HANDHOLE	EACH	1
85700200	FULL-ACTUATED CONTROLLER AND TYPE IV CABINET	EACH	1
87301215	ELECTRIC CABLE IN CONDUIT, SIGNAL NO. 14 2C	FOOT	2,103.0
87301225	ELECTRIC CABLE IN CONDUIT, SIGNAL NO. 14 3C	FOOT	1,101.5
87301245	ELECTRIC CABLE IN CONDUIT, SIGNAL NO. 14 5C	FOOT	1,381.0
87301255	ELECTRIC CABLE IN CONDUIT, SIGNAL NO. 14 7C	FOOT	1,127.5
87301805	ELECTRIC CABLE IN CONDUIT, SERVICE NO. 8 2C	FOOT	125.5
87301900	ELECTRIC CABLE IN CONDUIT, EQUIPMENT GROUNDING CONDUCTOR, NO. 6 1C	FOOT	996.5
87502440	TRAFFIC SIGNAL POST, GALVANIZED STEEL, 10 FT.	EACH	1
87502480	TRAFFIC SIGNAL POST, GALVANIZED STEEL, 14 FT.	EACH	1
87502500	TRAFFIC SIGNAL POST, GALVANIZED STEEL, 16 FT.	EACH	2
87700140	STEEL MAST ARM ASSEMBLY AND POLE, 20 FT.	EACH	1
87700160	STEEL MAST ARM ASSEMBLY AND POLE, 24 FT.	EACH	1
87700180	STEEL MAST ARM ASSEMBLY AND POLE, 28 FT.	EACH	1
87800100	CONCRETE FOUNDATION, TYPE A	FOOT	16.0
87800150	CONCRETE FOUNDATION, TYPE C	FOOT	4.0
87800400	CONCRETE FOUNDATION, TYPE E 30-INCH DIAMETER	FOOT	30.0
88030020	SIGNAL HEAD, LED, 1-FACE, 3-SECTION, MAST-ARM MOUNTED	EACH	3
88030050	SIGNAL HEAD, LED, 1-FACE, 3-SECTION, BRACKET MOUNTED	EACH	1
88030100	SIGNAL HEAD, LED, 1-FACE, 5-SECTION, BRACKET MOUNTED	EACH	1
88030110	SIGNAL HEAD, LED, 1-FACE, 5-SECTION, MAST-ARM MOUNTED	EACH	3
88030210	SIGNAL HEAD, LED, 2-FACE, 3-SECTION, BRACKET MOUNTED	EACH	1
88030220	SIGNAL HEAD, LED, 2-FACE, 5-SECTION, BRACKET MOUNTED	EACH	1
88102717	PEDESTRIAN SIGNAL HEAD, LED, 1-FACE, BRACKET MOUNTED WITH COUNTDOWN TIMER	EACH	6
88200110	TRAFFIC SIGNAL BACKPLATE, LOUVERED	EACH	6
88500100	INDUCTIVE LOOP DETECTOR	EACH	5
88800100	DETECTOR LOOP, TYPE I	FOOT	441.5
88700200	LIGHT DETECTOR	EACH	3
88700300	LIGHT DETECTOR AMPLIFIER	EACH	1
88800100	PEDESTRIAN PUSH-BUTTON	EACH	6
X0324085	EMERGENCY VEHICLE PRIORITY SYSTEM LINE SENSOR CABLE, NO. 20 3/C	FOOT	387.0
XB620200	UNINTERRUPTIBLE POWER SUPPLY, SPECIAL	EACH	1