

**ROUTE MARKERS**

FOR U.S. ROUTES  
M1-40-2424

FOR ILLINOIS ROUTES  
M1-50-2424

R.R. UNMARKED ROUTES  
SPECIAL 24" x 18" VARIABLE  
4" BLACK LETTERS ON WHITE  
REFLECTIVE BACKGROUND

**ARROWS SIGNS**

M5-1L-2115

M5-1R-2115

M6-1-2115

M6-1-1-2115

M6-3-2115

**CARDINAL DIRECTION & DETOUR SIGNS**

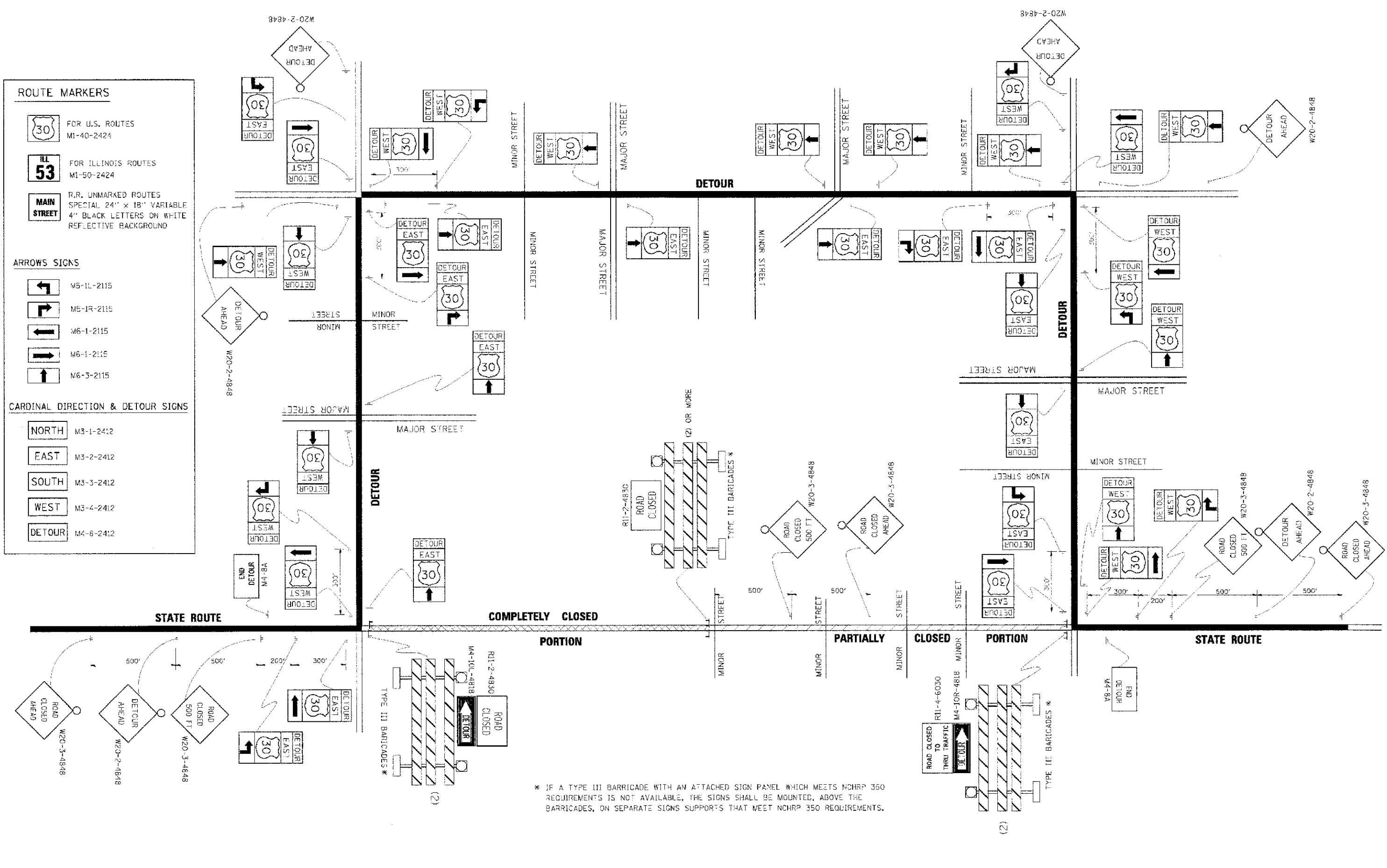
NORTH M3-1-2412

EAST M3-2-2412

SOUTH M3-3-2412

WEST M3-4-2412

DETOUR M4-6-2412



\* IF A TYPE III BARRICADE WITH AN ATTACHED SIGN PANEL WHICH MEETS NCHRP 350 REQUIREMENTS IS NOT AVAILABLE, THE SIGNS SHALL BE MOUNTED, ABOVE THE BARRICADES, ON SEPARATE SIGNS SUPPORTS THAT MEET NCHRP 350 REQUIREMENTS.

COMPANY NAME: HRGreen.com  
 PROJECT CONTACT: HRGreen.com  
 CLIENT: HRGreen.com  
 DATE: 10/18/08  
 FILE NAME: 638\_001430.dgn  
 PLOT DRIVER: pct\_yvz@hr.com  
 PEN TABLE: 638\_001430.tbl



HRGreen.com  
 Illinois Professional Design Firm  
 #184-001322

DESIGNED -  
 DRAWN -  
 CHECKED -  
 DATE -

REVISIONS

REVISION	NO.	DATE
REVISED	10-18-08	
REVISED	R, BORO 03-14-08	
REVISED	-	
REVISED	-	

**STATE OF ILLINOIS  
 DEPARTMENT OF TRANSPORTATION**

**DETOUR SIGNING  
 FOR CLOSING STATE HIGHWAYS**

SCALE: NONE SHEET NO. OF SHEETS STA. TO STA.

F.A.M. RTE.	SECTION	COUNTY	TOTAL SHEET NO.
4087	98-00024-00-WR	MCHENRY	115 82
TC-21			CONTRACT NO. 63532
FED. ROAD DIST. NO. 1 ILLINOIS FED. AID PROJECT			