

CODED PAY ITEM NO.	ITEM	UNIT	TOTAL QUANTITY	0001	0006	0021	0040	0042
				ROADWAY	BRIDGE SN 056-8010	TRAFFIC SIGNALS	RETAINING WALLS	TRAINEES
42000501	PORTLAND CEMENT CONCRETE PAVEMENT 10" (JOINTED)	SQ YD	3457	3457				
42001300	PROTECTIVE COAT	SQ YD	7034	7034				
42300400	PORTLAND CEMENT CONCRETE DRIVEWAY PAVEMENT, 8 INCH	SQ YD	370	370				
42400200	PORTLAND CEMENT CONCRETE SIDEWALK 5 INCH	SQ FT	1876	1876				
42400800	DETECTABLE WARNINGS	SQ FT	132	132				
44000100	PAVEMENT REMOVAL	SQ YD	4221	4221				
44000200	DRIVEWAY PAVEMENT REMOVAL	SQ YD	518	518				
44000500	COMBINATION CURB AND CUTTER REMOVAL	FOOT	3283	3283				
44000600	SIDEWALK REMOVAL	SQ FT	707	707				
44004250	PAVED SHOULDER REMOVAL	SQ YD	71	71				
50200100	STRUCTURE EXCAVATION	CU YD	9				9	
50300225	CONCRETE STRUCTURES	CU YD	75.5		75.5			
50300255	CONCRETE SUPERSTRUCTURE	CU YD	277		277			
50300260	BRIDGE DECK GROOVING	SQ YD	679		679			
50300300	PROTECTIVE COAT	SQ YD	768		768			
50400905	FURNISHING AND ERECTING PRECAST PRESTRESSED CONCRETE I-BEAMS, 42 IN.	FOOT	528		528			
50800205	REINFORCEMENT BARS, EPOXY COATED	POLND	69280		69280			
50800515	BAR SPLICERS	EACH	86		86			
Δ 50901720	BICYCLE RAILING	FOOT	66		66			
Δ 50901750	PARAPET RAILING	FOOT	67		67			
51200959	FURNISHING METAL SHELL PILES 14" X 0.312"	FOOT	920		920			
51202305	DRIVING PILES	FOOT	920		920			
51203200	TEST PILE METAL SHELLS	EACH	2		2			
51500100	NAME PLATES	EACH	1		1			
542A0223	PIPE CULVERTS, CLASS A, TYPE 1 18"	FOOT	73	73				
54213657	PRECAST REINFORCED CONCRETE FLARED END SECTIONS 12"	EACH	2	2				
54213660	PRECAST REINFORCED CONCRETE FLARED END SECTIONS 15"	EACH	2	2				
54213663	PRECAST REINFORCED CONCRETE FLARED END SECTIONS 18"	EACH	4	4				
54213669	PRECAST REINFORCED CONCRETE FLARED END SECTIONS 24"	EACH	2	2				
54213681	PRECAST REINFORCED CONCRETE FLARED END SECTIONS 36"	EACH	1	1				
Δ 54213693	PRECAST REINFORCED CONCRETE FLARED END SECTIONS 48"	EACH	2	2				
54215550	METAL END SECTIONS 15"	EACH	1	1				

* INDICATES SPECIAL PROVISION
Δ SPECIALTY ITEMS

CODED PAY ITEM NO.	ITEM	UNIT	TOTAL QUANTITY	0001	0008	0021	0040	0042
				ROADWAY	BRIDGE SN 056-6010	TRAFFIC SIGNALS	RETAINING WALLS	TRAINEES
550A005C	STORM SEWERS, CLASS A, TYPE 1 12"	FOOT	854	854				
550A007C	STORM SEWERS, CLASS A, TYPE 1 15"	FOOT	7	7				
550A014D	STORM SEWERS, CLASS A, TYPE 1 30"	FOOT	144	144				
550A016D	STORM SEWERS, CLASS A, TYPE 1 36"	FOOT	497	497				
550A034D	STORM SEWERS, CLASS A, TYPE 2 12"	FOOT	457	457				
550A036D	STORM SEWERS, CLASS A, TYPE 2 15"	FOOT	17	17				
550A038D	STORM SEWERS, CLASS A, TYPE 2 18"	FOOT	422	422				
550A041D	STORM SEWERS, CLASS A, TYPE 2 24"	FOOT	438 1099	438 1099				
550A043D	STORM SEWERS, CLASS A, TYPE 2 30"	FOOT	148	148				
550A045D	STORM SEWERS, CLASS A, TYPE 2 36"	FOOT	1043	1043				
550A047D	STORM SEWERS, CLASS A, TYPE 2 42"	FOOT	15	15				
550A048D	STORM SEWERS, CLASS A, TYPE 2 48"	FOOT	661	661				
550A049D	STORM SEWERS, CLASS A, TYPE 2 54"	FOOT	344	344				
5510050D	STORM SEWER REMOVAL 12"	FOOT	434	434				
5510070D	STORM SEWER REMOVAL 15"	FOOT	149	149				
5510110D	STORM SEWER REMOVAL 21"	FOOT	47	47				
5510180D	STORM SEWER REMOVAL 42"	FOOT	373	373				
5610005D	DUCTILE IRON WATER MAIN TEE 12" X 6"	EACH	3	3				
5610007D	DUCTILE IRON WATER MAIN TEE 16" X 6"	EACH	1	1				
5610060D	WATER MAIN 6"	FOOT	67	67				
5610090D	WATER MAIN 12"	FOOT	24	24				
5610947D	DUCTILE IRON WATER MAIN FITTINGS 12" 45.00 DEGREE BEND	EACH	4	4				
5640030D	FIRE HYDRANTS TO BE ADJUSTED	EACH	1	1				
5640080D	FIRE HYDRANT AND VALVE TO BE MOVED	EACH	4	4				
5910010D	GEOCOMPOSITE WALL DRAIN	SQ YD	146		109		37	
6010095D	PIPE DRAINS 15"	FOOT	12	12				
6010760D	PIPE UNDERDRAINS 4"	FOOT	309	309				
6020134D	CATCH BASINS, TYPE A, 4'-DIAMETER, TYPE 24 FRAME AND GRATE	EACH	26	26				
6020504D	CATCH BASINS, TYPE A, 5'-DIAMETER, TYPE 24 FRAME AND GRATE	EACH	3	3				
6020824D	CATCH BASINS, TYPE C, TYPE 24 FRAME AND GRATE	EACH	4	4				
6021840D	MANHOLES, TYPE A, 4'-DIAMETER, TYPE 1 FRAME, CLOSED LID	EACH	7 +	7 +				
6022110D	MANHOLES, TYPE A, 5'-DIAMETER, TYPE 1 FRAME, CLOSED LID	EACH	13	13				
6022380D	MANHOLES, TYPE A, 6'-DIAMETER, TYPE 1 FRAME, CLOSED LID	EACH	3 +	3 +				

* INDICATES SPECIAL PROVISION
 Δ SPECIALTY ITEMS

FILE NAME = ...2473.000.03.dgn	USER NAME = bas	DESIGNER = BAS	REVISED = 4/11/2013 Δ	STATE OF ILLINOIS DEPARTMENT OF TRANSPORTATION	SUMMARY OF QUANTITIES			F.A.U. RTL = 4068	SECTION = 07-0031-00-PY	COUNTY = McHARDY	TOTAL SHEETS = 167	SHEET NO. = 7
	PLOT SCALE = 1/8" = 1'	CHECKED = GAB	REVISED =		SCALE: NONE	SHEET NO. 3 OF 7 SHEETS	STA. TO STA.	CONTRACT NO. 63743				
	PLOT DATE = 4/15/2012	DATE = 10/22/12	REVISED =		FED. ROAD DIST. NO. 1 ILLINOIS FED. AID PROJECT XXXXXXX							
ADDENDUM Δ REV. 4/11/2013 CTB												

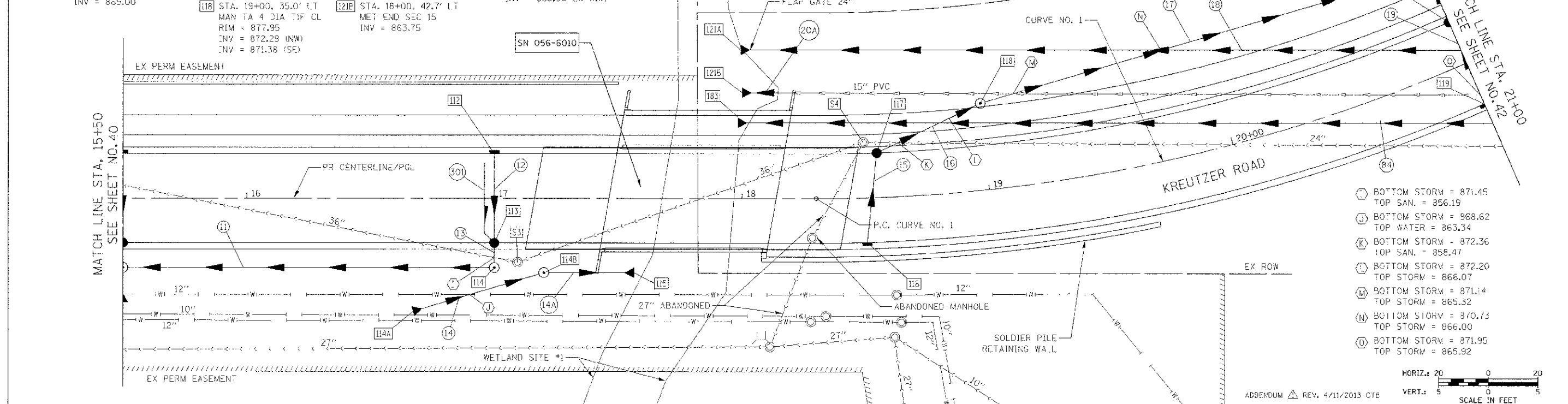
DATE	
BY	
DESIGNED	
DRAWN	
CHECKED	
IN CHARGE	
PROJECT NO.	
SHEET NO.	

DATE	
BY	
DESIGNED	
DRAWN	
CHECKED	
IN CHARGE	
PROJECT NO.	
SHEET NO.	

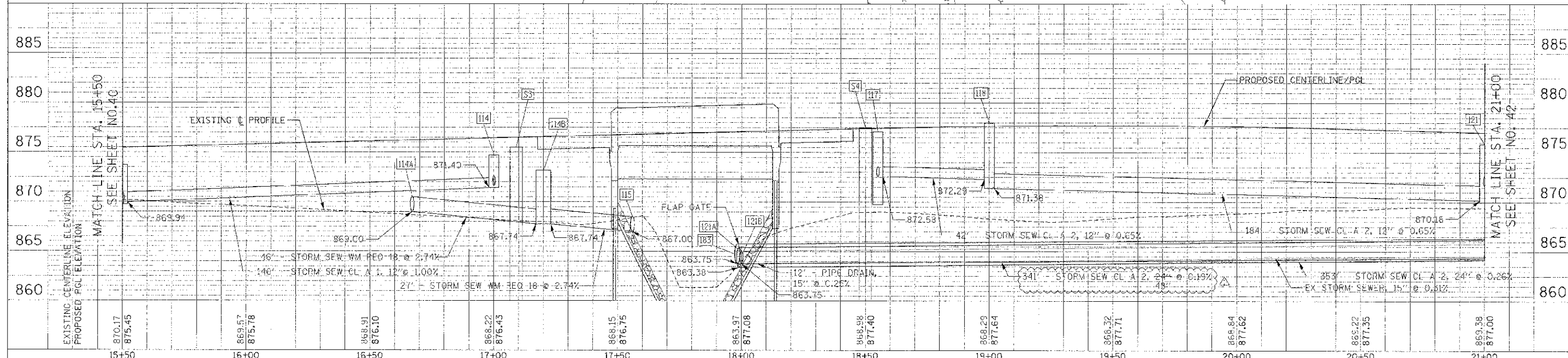
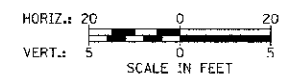
- 112 STA. 17+00, 18.0' LT INLETS TA T24F&G RIM = 876.07 INV = 871.99 (W)
- 113 STA. 17+00, 18.0' RT CB TA 4 DIA T24F&G RIM = 876.07 INV = 874.13 (PD NE) INV = 871.65 (E) INV = 871.66 (W)
- 114 STA. 17+00, 28.0' RT MAN TA 4 DIA TIF CL RIM = 874.68 INV = 871.60 (E) INV = 871.40 (W)
- 114A STA. 16+57, 45.6' RT PRC FLAR END SEC 18 GRATING-C FL END S 18 INV = 869.00
- 114B STA. 17+20, 30.0' RT MAN TA 6D TIF CL R-P RIM = 873.15 INV = 867.74 (NW) INV = 867.74 (S) 5.4" CRIF:CE
- 115 STA. 17+55, 30.0' RT PRC FLAR END SEC 18 INV = 867.00
- 116 STA. 18+50, 18.0' RT INLETS TA T24F&G RIM = 877.04 INV = 872.91 (E)
- 117 STA. 18+55, 18.0' LT C3 TA 4 DIA T24F&G RIM = 877.07 INV = 872.58 (W) INV = 872.58 (SE)
- 118 STA. 19+00, 35.0' LT MAN TA 4 DIA TIF CL RIM = 877.95 INV = 872.29 (NW) INV = 871.38 (SE)
- 119 STA. 21+00, 18.0' RT INLETS TA T24F&G RIM = 876.64 INV = 872.16 (NE)
- 120 STA. 21+00, 18.0' LT CB TA 4 DIA T24F&G RIM = 876.64 INV = 871.83 (SW) INV = 871.83 (NE)
- 121 STA. 21+00, 40.0' LT MAN TA 4 DIA TIF CL RIM = 875.85 INV = 871.65 (SW) INV = 870.18 (NW) INV = 869.98 (SE)
- 121A STA. 17+99, 60.0' LT PRC FLAR END SEC 24 INV = 863.38
- 121B STA. 18+00, 42.7' LT MET END SEC 15 INV = 863.75
- 123 STA. 17+96, 30.6' L- PRC FLAR END SEC 24 48 INV = 863.75
- 123A STA. 17+09, 25.8' RT SAN MAN RECONST EX RIM = 867.65 PR RIM = 875.50 INV = 853.30 EX (SE) INV = 853.20 EX (NF)
- 124 STA. 18+50, 22.4' LI SAN MAN RECONST EX RIM = 870.12 PR RIM = 877.45 INV = 856.40 EX (S) INV = 853.60 EX (NW)

- 11 146' - STORM SEW CL A 1, 12" @ 1.00% TBF = 0.0 CU YD
- 12 33' - STORM SEW CL A 1, 12" @ 1.00% TBF = 5.7 CU YD
- 13 6' - STORM SEW CL A 1, 12" @ 1.00% TBF = 0.4 CU YD
- 14 46' - STORM SEW WM REQ 18 @ 2.74% TBF = 0.0 CU YD
- 14A 27' - STORM SEW WM REQ 18 @ 2.74% TBF = 0.0 CU YD
- 15 33' - STORM SEW CL A 1, 12" @ 1.00% TBF = 5.5 CU YD
- 16 42' - STORM SEW CL A 2, 12" @ 0.63% TBF = 13.0 CU YD
- 17 184' - STORM SEW CL A 2, 12" @ 0.65% TBF = 0.9 CU YD
- 18 353' - STORM SEW CL A 2, 24" @ 0.26% TBF = 113.4 CU YD
- 19 33' - STORM SEW CL A 1, 12" @ 1.00% TBF = 7.6 CU YD
- 20 18' - STORM SEW CL A 2, 12" @ 1.00% TBF = 4.2 CU YD
- 20A 12' - PIPE DRAINS, 15" @ 0.25% TBF = 0.0 CU YD
- 28 341' - STORM SEW CL A 2, 24" @ 0.19% TBF = 187.0 CU YD
- 301 32' - PIPE UNDERDRAINS 4" @ 0.50% TBF = 0.7 CU YD

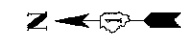
- NOTES:
- STATIONS AND OFFSETS ARE TO THE CENTER OF THE STRUCTURE.
 - RIM ELEVATIONS FOR CURB STRUCTURES ARE AT THE EDGE OF PAVEMENT.
 - SEE SHEET 114 FOR RESURFICING/PAVEMENT DETAILS.



- ⊖ BOTTOM STORM = 871.45 TOP SAN. = 856.19
- ⊖ BOTTOM STORM = 868.62 TOP WATER = 863.34
- ⊖ BOTTOM STORM = 872.36 TOP SAN. = 858.47
- ⊖ BOTTOM STORM = 872.20 TOP STORM = 866.07
- ⊖ BOTTOM STORM = 871.14 TOP STORM = 865.32
- ⊖ BOTTOM STORM = 870.15 TOP STORM = 866.00
- ⊖ BOTTOM STORM = 871.95 TOP STORM = 865.92



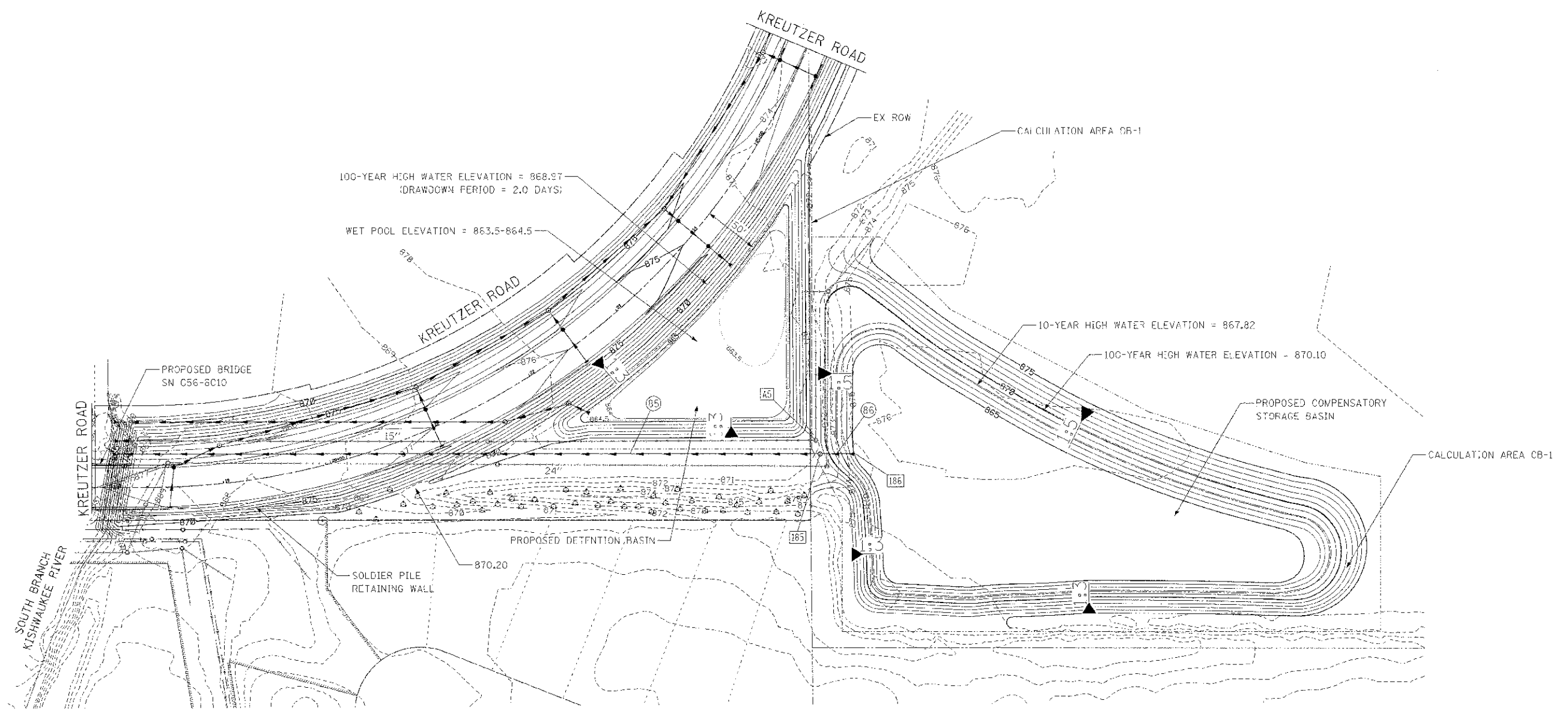
FILE NAME =	USER NAME = bas	DESIGNED - BAS	REVISED - 4/11/2013	F.A.J. RIE.	SECTION	COUNTY	TOTAL SHEETS	SHEET NO.
...\\2473.DKU.32.dgn		DRAWN - DAS	REVISED -	4068	07-0031-00-PV	McHENRY	167	41
		CHECKED - GAB	REVISED -	CONTRACT NO. 63743				
		DATE - 10/22/12	REVISED -	SCALE: 1" = 20'				
				STATE OF ILLINOIS DEPARTMENT OF TRANSPORTATION		DRAINAGE AND UTILITY PLAN		
				SHEET NO. 2 OF 12 SHEETS		STA. 15+50 TO STA. 21+00		
				FED. ROAD DIST. NO. 1 ILLINOIS		FED. AID PROJECT XXX		



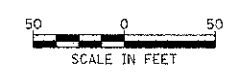
23+40, 222.9'
 185 STA. 23+41, 222.0' RT
 MAN TA 4 DIA TIF CL
 RIM = 871.00 6
 INV = 864.95 (N)
 INV = 864.55 (S)
 23+56, 245.0'
 186 STA. 23+63, 236.0' RT
 PRC FLAR END SEC 24 48
 GRATING-C FL FND S 24 48
 INV = 865.00

23+45, 211.1' RT
 A5 EX MANHOLE
 INV = 865.10 EX (N)
 INV = 865.20 EX (E)

48"
 85 296' - STORM SEW CL A 2, 24" @ 0.19%
 TBF = 0.0 CU YD
 48"
 86 24' - STORM SEW CL A 2, 24" @ 0.21%
 TBF = 0.0 CU YD



LEGEND
 EXISTING INDEX CONTOUR ---875---
 EXISTING INTERMEDIATE CONTOUR - - - - -
 PROPOSED INDEX CONTOUR ---865---
 PROPOSED INTERMEDIATE CONTOUR - - - - -



FILE NAME =
 ...2473_sht-detail-basin.dgn

USER NAME = bas
 PLOT SCALE = 50.0000 / 1"
 PLOT DATE = 4/15/2013

DESIGNED	BAS	REVISED	4/11/2013
DRAWN	BAS	REVISED	
CHECKED	GAB	REVISED	
DATE	10/22/12	REVISED	

**STATE OF ILLINOIS
 DEPARTMENT OF TRANSPORTATION**

SOUTH COMPENSATORY AND DETENTION STORAGE DETAIL

SCALE: 1" = 50'
 SHEET NO. 1 OF 1 SHEETS
 SIA. TO SIA.

F.A.U. NO.	SECTION	COUNTY	TOTAL SHEET NO.
4068	07 003 00 PV	McHENRY	167 113
FED. ROAD DIST. NO. 1 ILLINOIS			FED. AID PROJECT XXX
CONTRACT NO. 63743			

APPENDIX A REV. 4/11/2013 C78