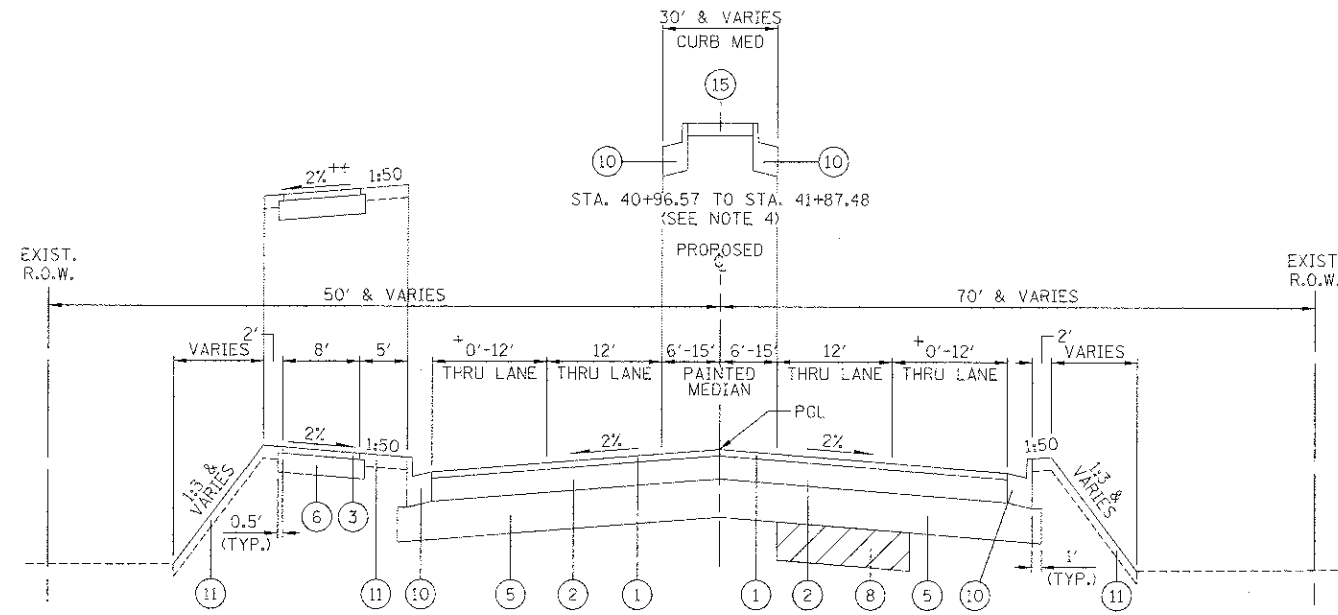


STRUCTURAL PAVEMENT DESIGN INFORMATION BLOCK FOR
KREUTZER ROAD - STA. 10+57 TO STA. 45+51

| | |
|-----------------------------|--------------------------------------|
| STRUCTURAL TRAFFIC: | YEAR 2032 |
| | PV = 10,450 SU = 220 MU = 330 |
| ROAD/STREET CLASSIFICATION: | CLASS II |
| | P = 95% S = 2% M = 3% |
| TRAFFIC FACTOR: | ACTUAL TF = 1.53 |
| | MINIMUM TF = N/A |
| AC GRADE: | BINDER = PG 64-22 SURFACE = PG 64-28 |
| SUBGRADE SUPPORT RATING: | SSR = POOR |

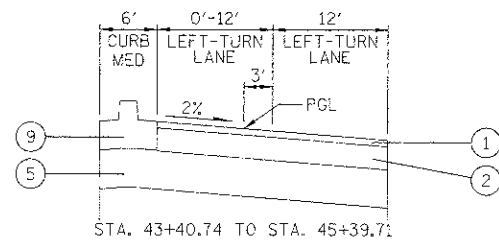
PROPOSED LEGEND

- ① HOT-MIX ASPHALT SURFACE COURSE, MIX "D", N70, 2"
- ② HOT-MIX ASPHALT BINDER COURSE, IL-19.0, N70, 8"
- ③ HOT-MIX ASPHALT SURFACE COURSE, MIX "D", N50, 2"
- ④ NOT USED
- ⑤ AGGREGATE SUBGRADE IMPROVEMENT, 12" (SEE NOTE 4 BELOW)
- ⑥ SUB-BASE GRANULAR MATERIAL, TYPE B, 6"
- ⑦ PORTLAND CEMENT CONCRETE PAVEMENT, 10" (JOINTED)
- ⑧ AGGREGATE SUBGRADE IMPROVEMENT (SEE TABLE ON SHEET 14)
- ⑨ CONCRETE MEDIAN, TYPE SB-6.12
- ⑩ COMBINATION CONCRETE CURB AND GUTTER, B-6.24
- ⑪ TOPSOIL EXCAVATION AND PLACEMENT, 6" SEEDING, FERTILIZER, AND EROSION MAT
- ⑫ LONGITUDINAL CONSTRUCTION JOINT - #6 STEEL TIE BAR, 24" C-C, COST INCLUDED IN COMBINATION CONCRETE CURB AND GUTTER PAY ITEM
- ⑬ LONGITUDINAL CONSTRUCTION JOINT - #6 STEEL TIE BAR, COST INCLUDED IN PCC PAVEMENT, 10" (JOINTED)
- ⑭ LONGITUDINAL SAWED JOINT - #6 EPOXY COATED STEEL TIE BAR, 24" C-C, COST INCLUDED IN PCC PAVEMENT, 10" (JOINTED)
- ⑮ CONCRETE MEDIAN SURFACE, 4"

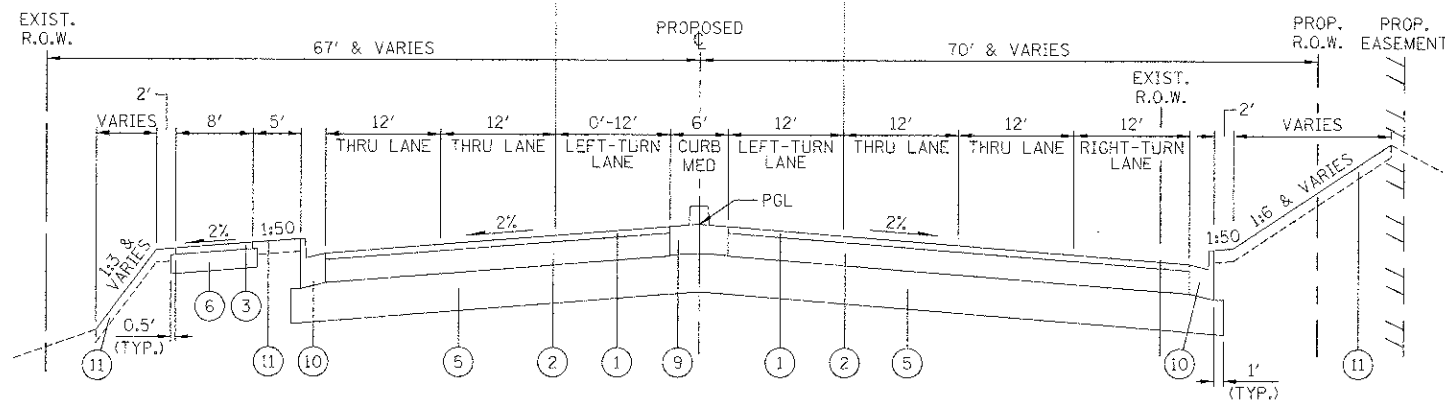


KREUTZER ROAD

STA. 10+57.50 TO STA. 17+16.23
 STA. 18+43.77 TO STA. 42+50.71
 + STA. 36+25.57 TO STA. 42+50.71
 ++ STA. 37+50.00 TO STA. 42+50.71



STA. 43+40.74 TO STA. 45+39.71



KREUTZER ROAD

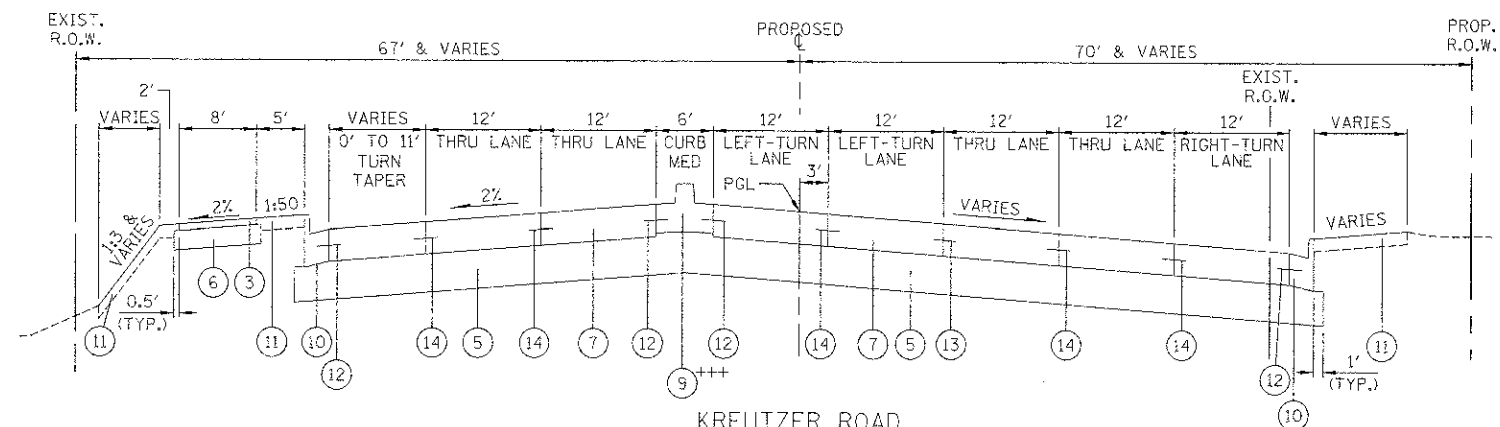
STA. 42+50.71 TO STA. 45+50.89

NOTES:

- THE UNIT WEIGHT TO CALCULATE ALL HOT-MIX ASPHALT MIXTURES IS 112 LB/SY-IN.
- FOR PERCENT OF RAP, SEE DISTRICT ONE SPECIAL PROVISIONS.
- THE "AC TYPE" FOR POLYMERIZED HMA MIXES SHALL BE "SBS/SBR PG 70-22" AND FOR NON-POLYMERIZED HMA, THE "AC TYPE" SHALL BE "PG 64-28" UNLESS MODIFIED BY DISTRICT ONE SPECIAL PROVISIONS.
- ADDITIONAL SUBGRADE THICKNESS BELOW MEDIAN AREA SHALL BE INCLUDED IN THE COST OF THE PAY ITEM FOR AGGREGATE SUBGRADE IMPROVEMENT, 12" AND SHALL NOT BE PAID FOR SEPARATELY.

MIXTURE REQUIREMENT

| PAY ITEM | AIR VOIDS @ Ndes |
|---|------------------|
| HOT-MIX ASPHALT PAVEMENT - KREUTZER ROAD | |
| HOT-MIX ASPHALT SURFACE COURSE, MIX "D", N70 (IL-9.5 mm) (2") | 4% @ 70 GYR. |
| HOT-MIX ASPHALT BINDER COURSE, IL-19.0, N70 (8") (IN 2 LIFTS) | 4% @ 70 GYR. |
| STABILIZED HOT-MIX ASPHALT PATH | |
| HOT-MIX ASPHALT SURFACE COURSE, MIX "D", N50 (IL-9.5 mm) (2") | 4% @ 50 GYR. |
| TEMPORARY PAVEMENT, 9" | |
| TEMP PAVEMENT (HMA BINDER IL-19mm) (2") | 4% @ 50 GYR. |
| HMA BASE COURSE (HMA BINDER IL-19mm) (7") (IN 3 LIFTS) | 4% @ 50 GYR. |



KREUTZER ROAD

STA. 45+50.89 TO STA. 47+17.05
 +++ STA. 45+50.89 TO STA. 46+15.74

FILE NAME = ...\\03-fg\pcc\12473_TYP_22.dgn

USER NAME = bas
 PLOT SCALE = 1/8" = 1'-0"
 PLOT DATE = 10/18/2012

DESIGNED - BAS
 DRAWN - BAS
 CHECKED - GAB
 DATE - 10/22/12

REVISED -
 REVISED -
 REVISED -
 REVISED -

STATE OF ILLINOIS
 DEPARTMENT OF TRANSPORTATION

PROPOSED TYPICAL SECTIONS

SCALE: NONE SHEET NO. 2 OF 3 SHEETS STA. TO STA.

| | | | | |
|--------------------------------|---------------|---------|--------------------|-----------|
| F.A.U. RTE. | SECTION | COUNTY | TOTAL SHEETS | SHEET NO. |
| 4068 | 07-0031-00-PV | McHENRY | 167 | 13 |
| FED. ROAD DIST. NO. 1 ILLINOIS | | | CONTRACT NO. 63743 | |

FED. AID PROJECT XXX-----