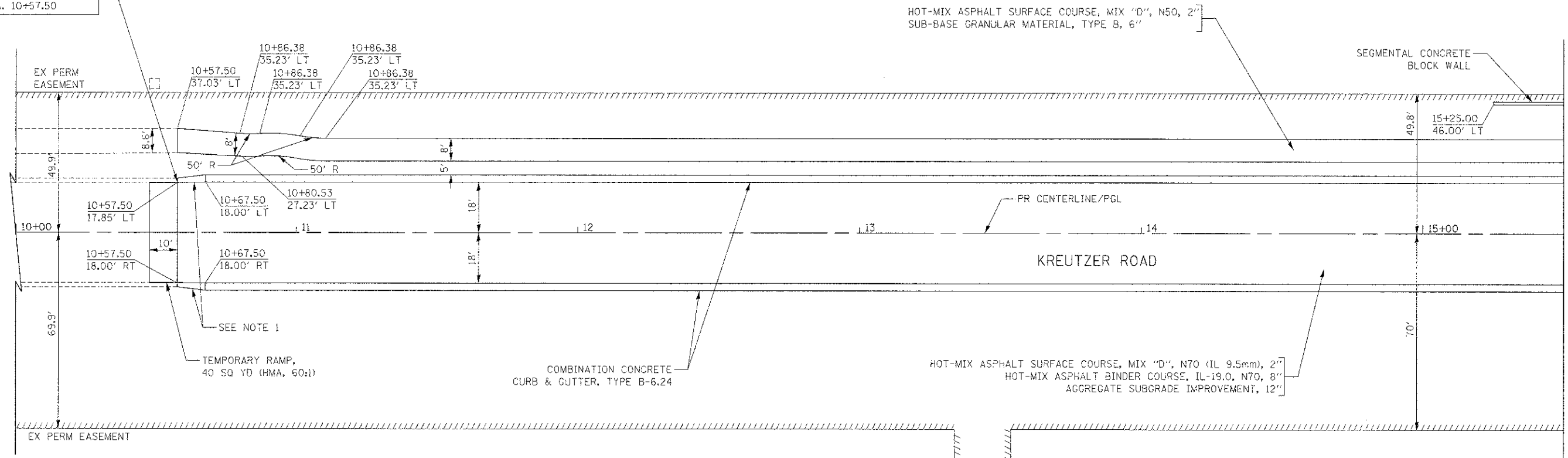


PLAN	SURVEYED	DATE
	PLOTTED	BY
	CHECKED	
	NO. 9000	
	NO. 1000	
	NO. 2000	
	NO. 3000	
	NO. 4000	
	NO. 5000	
	NO. 6000	
	NO. 7000	
	NO. 8000	
	NO. 9000	

IMPROVEMENT BEGINS STA. 10+57.50

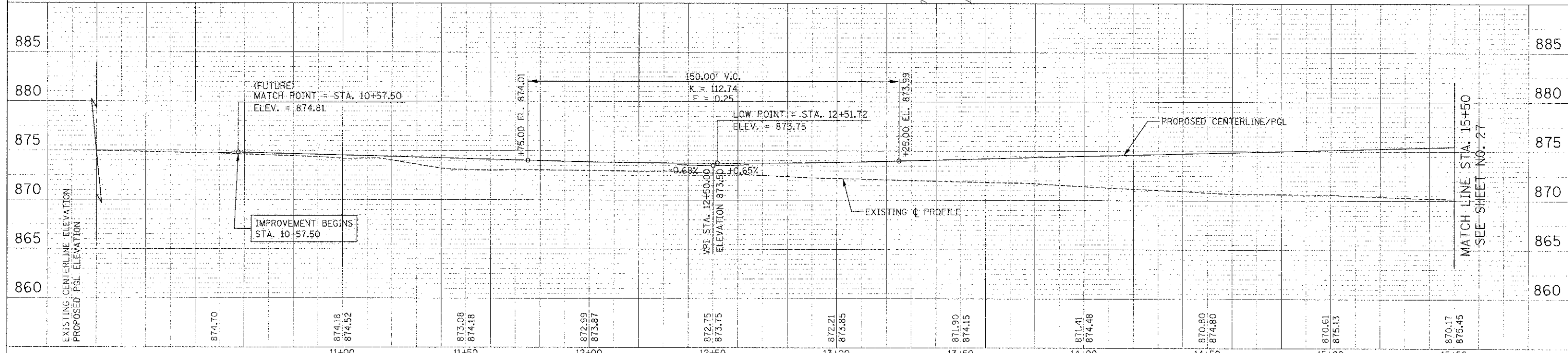


MATCH LINE STA. 15+50  
SEE SHEET NO. 27

- NOTES:
- TRANSITION FROM B-6.24 TO B-6.12 OVER 10'. PAID FOR AS "COMBINATION CONCRETE CURB & GUTTER, TYPE B-6.24".



PROFILE	SURVEYED	DATE
	PLOTTED	BY
	CHECKED	
	NO. 9000	
	NO. 1000	
	NO. 2000	
	NO. 3000	
	NO. 4000	
	NO. 5000	
	NO. 6000	
	NO. 7000	
	NO. 8000	
	NO. 9000	



MATCH LINE STA. 15+50  
SEE SHEET NO. 27

FILE NAME = ...2473_P&P_01.dgn	USER NAME = bas	DESIGNED - BAS	REVISED -	<p align="center"><b>STATE OF ILLINOIS</b> <b>DEPARTMENT OF TRANSPORTATION</b></p>	<b>PLAN AND PROFILE</b>				F.A.U. RTE. 4068	SECTION 07-0031-00-PV	COUNTY McHENRY	TOTAL SHEETS 167	SHEET NO. 26
PLOT SCALE = 20,0000 / 1"		DRAWN - BAS	REVISED -		SCALE: 1" = 20'	SHEET NO. 1 OF 11 SHEETS	STA. 10+57 TO STA. 15+50	FED. ROAD DIST. NO. 1 ILLINOIS	FED. AID PROJECT XXX	CONTRACT NO. 63743			
PLOT DATE = 12/18/2012		CHECKED - GAB	REVISED -										
		DATE - 10/22/12	REVISED -										