

Ⓟ BOTTOM STORM = 870.13  
TOP SAN. = 865.34

133A STA. 27+05, 35.0' RT  
PRC FLAR END SEC 18  
GRATING-C FL END S 18  
INV = 870.00

134 STA. 27+00, 20.6' RT  
INLETS TA T24F&G  
RJM = 874.06  
INV = 869.90 (NE)

136 STA. 27+00, 35.0' LT  
MAN TA 5 DIA T1F CL  
RIM = 874.80  
INV = 869.41 (SW)  
INV = 867.83 (E)  
INV = 867.63 (NW)

138 STA. 29+00, 18.0' LT  
CS TA 4 DIA T24F&G  
RIM = 875.99  
INV = 874.11 (PD SE)  
INV = 871.50 (S)  
INV = 870.47 (N)

55 STA. 27+17, 11.2' RT  
SAN MAN ADJUST  
EX RIM = 875.21  
PR RIM = 874.39  
INV = 862.50 EX (NE)  
INV = 862.60 EX (S)

133B STA. 26+30, 35.0' RT  
PRC FLAR END SEC 18  
INV = 869.65

135 STA. 27+00, 18.0' LT  
CS TA 4 DIA T24F&G  
RIM = 874.11  
INV = 869.54 (SW)  
INV = 869.54 (NE)

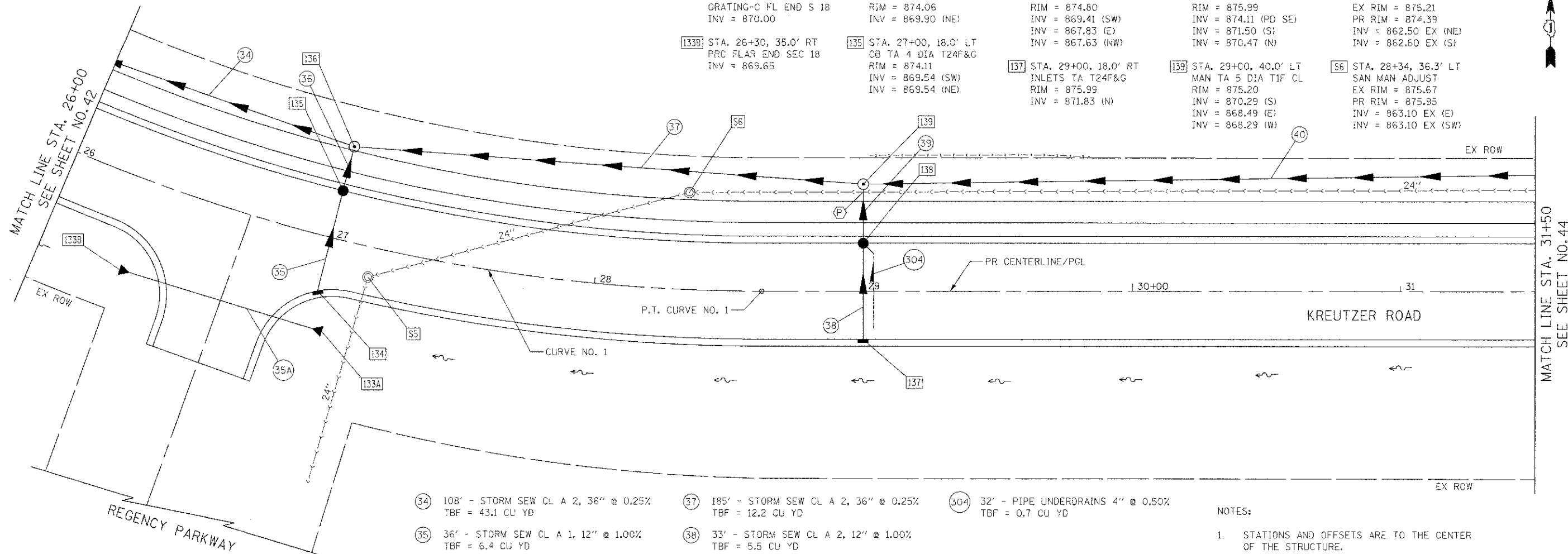
137 STA. 29+00, 18.0' RT  
INLETS TA T24F&G  
RIM = 875.99  
INV = 871.83 (N)

139 STA. 29+00, 40.0' LT  
MAN TA 5 DIA T1F CL  
RIM = 875.20  
INV = 870.29 (S)  
INV = 868.49 (E)  
INV = 868.29 (W)

56 STA. 28+34, 36.3' LT  
SAN MAN ADJUST  
EX RIM = 875.67  
PR RIM = 875.95  
INV = 863.10 EX (E)  
INV = 863.10 EX (SW)

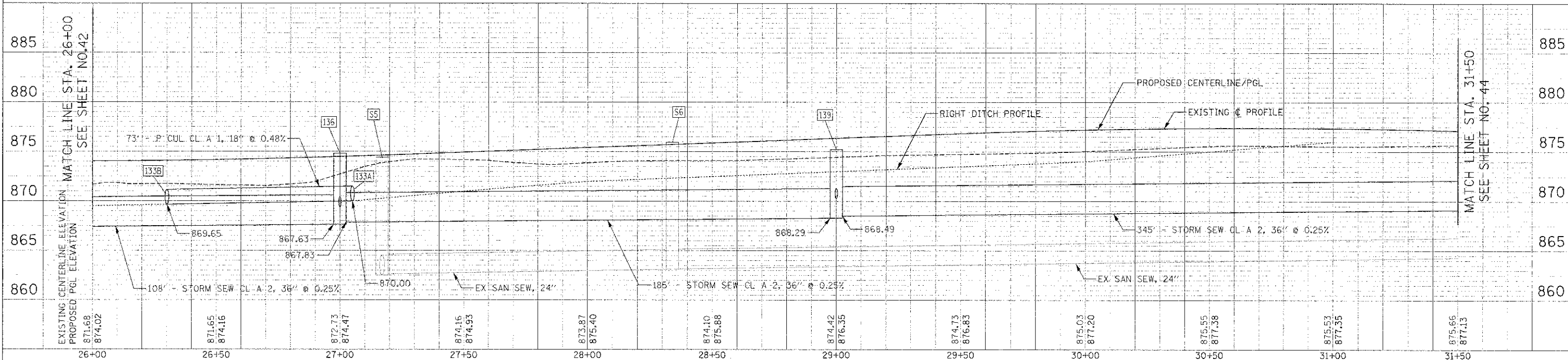
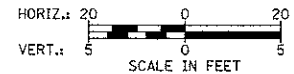
PLAN	REVISIONS	DATE
NO. 1	DATE	
NO. 2	DATE	
NO. 3	DATE	
NO. 4	DATE	
NO. 5	DATE	
NO. 6	DATE	
NO. 7	DATE	
NO. 8	DATE	
NO. 9	DATE	
NO. 10	DATE	

PROJ. I.T.	REVISIONS	DATE
NO. 1	DATE	
NO. 2	DATE	
NO. 3	DATE	
NO. 4	DATE	
NO. 5	DATE	
NO. 6	DATE	
NO. 7	DATE	
NO. 8	DATE	
NO. 9	DATE	
NO. 10	DATE	



- 34 108' - STORM SEW CL A 2, 36" @ 0.25%  
TBF = 43.1 CU YD
- 35 36' - STORM SEW CL A 1, 12" @ 1.00%  
TBF = 6.4 CU YD
- 35A 73' - P CUL CL A 1, 18" @ 0.48%  
TBF = 8.4 CU YD
- 36 13' - STORM SEW CL A 2, 12" @ 1.00%  
TBF = 4.5 CU YD
- 37 185' - STORM SEW CL A 2, 36" @ 0.25%  
TBF = 12.2 CU YD
- 38 33' - STORM SEW CL A 2, 12" @ 1.00%  
TBF = 5.5 CU YD
- 39 18' - STORM SEW CL A 2, 12" @ 1.00%  
TBF = 7.1 CU YD
- 40 345' - STORM SEW CL A 2, 36" @ 0.25%  
TBF = 0.0 CU YD
- 304 32' - PIPE UNDERDRAINS 4" @ 0.50%  
TBF = 0.7 CU YD

- NOTES:
- STATIONS AND OFFSETS ARE TO THE CENTER OF THE STRUCTURE.
  - RIM ELEVATIONS FOR CURB STRUCTURES ARE AT THE EDGE OF PAVEMENT.



FILE NAME = ...2473.D&U.04.dgn	USER NAME = bas	DESIGNED = BAS	REVISED =	<b>STATE OF ILLINOIS DEPARTMENT OF TRANSPORTATION</b>	<b>DRAINAGE AND UTILITY PLAN</b>	F.A.U. RTE. = 4068	SECTION = 07-0031-00-PV	COUNTY = McHENRY	TOTAL SHEETS = 167	SHEET NO. = 43		
PLOT SCALE = 20.0000' / 1"	CHECKED = GAB	DATE = 10/22/12	REVISED =			SCALE: 1" = 20'	SHEET NO. 4 OF 12 SHEETS	STA. 26+00 TO STA. 31+50	CONTRACT NO. 63743			
PLOT DATE = 10/18/2012	DATE = 10/22/12	REVISED =	REVISED =			FED. ROAD DIST. NO. 1 ILLINOIS FED. AID PROJECT XXX						