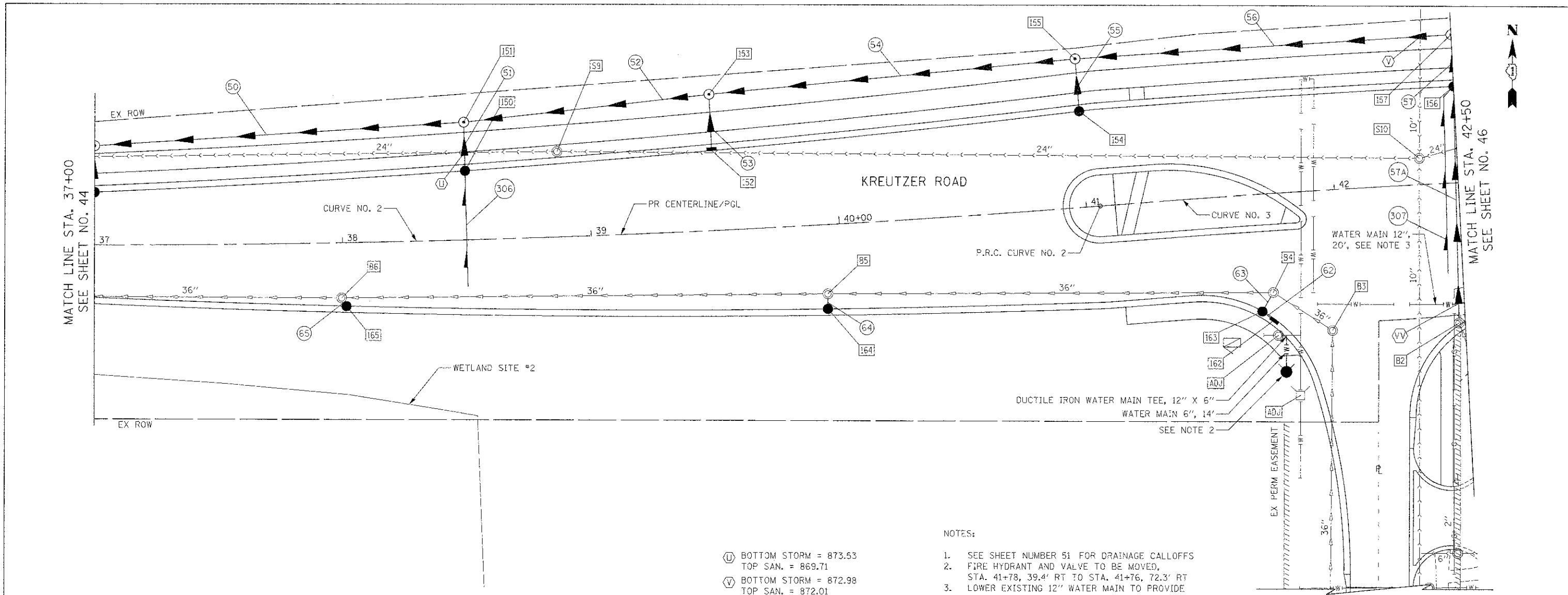


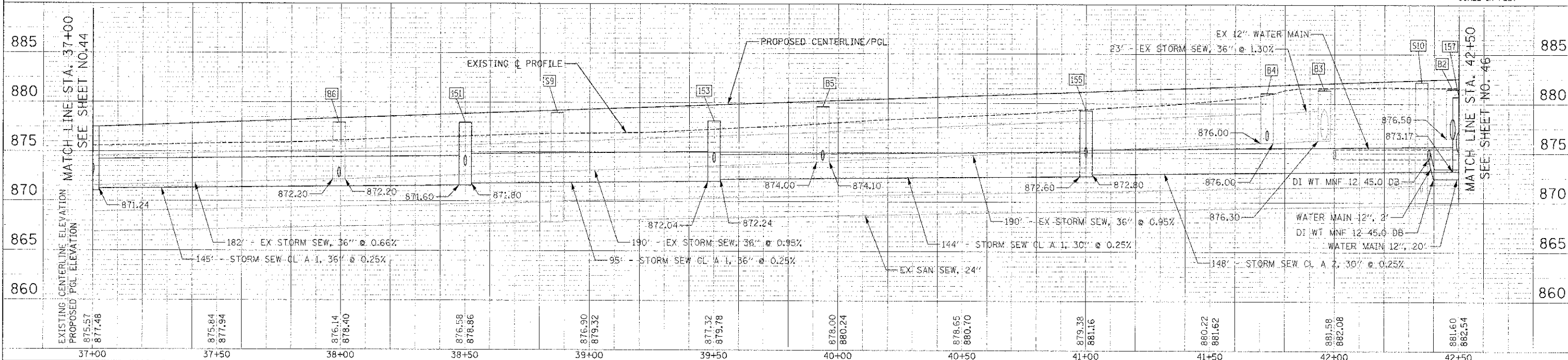
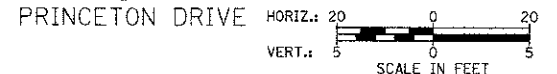
PLAN	SURVEYED	BY	DATE
	NOTED		
	ALLOTTMENT CHECKED		
	RT. OF WAY CHECKED		
	ROAD FILE NAME		

PROFILE	BY	DATE



NOTES:

- ⓪ BOTTOM STORM = 873.53
TOP SAN. = 869.71
 - Ⓥ BOTTOM STORM = 872.98
TOP SAN. = 872.01
 - ⓋⓋ BOTTOM STORM = 876.30
TOP WATER = 873.40
1. SEE SHEET NUMBER 51 FOR DRAINAGE CALLOFFS
 2. FIRE HYDRANT AND VALVE TO BE MOVED, STA. 41+78, 39.4' RT TO STA. 41+76, 72.3' RT
 3. LOWER EXISTING 12" WATER MAIN TO PROVIDE MIN. 18" CLEARANCE TO PROPOSED STORM SEWER USING 45 DEGREE BENDS



FILE NAME =	USER NAME = bas	DESIGNED = BAS	REVISED =	STATE OF ILLINOIS DEPARTMENT OF TRANSPORTATION	DRAINAGE AND UTILITY PLAN	F.A.J. RTE.	SECTION	COUNTY	TOTAL SHEETS	SHEET NO.	
...2475.D&U.36.dgn	PLOT SCALE = 20.0000' / 1in.	DRAWN = BAS	REVISED =			4068	07-0031-00-PV	McHENRY	167	45	
	PLOT DATE = 10/18/2012	CHECKED = GAB	REVISED =			CONTRACT NO. 63743					
		DATE = 10/22/12	REVISED =			FED. ROAD DIST. NO. 1 ILLINOIS FED. AID PROJECT XXX					