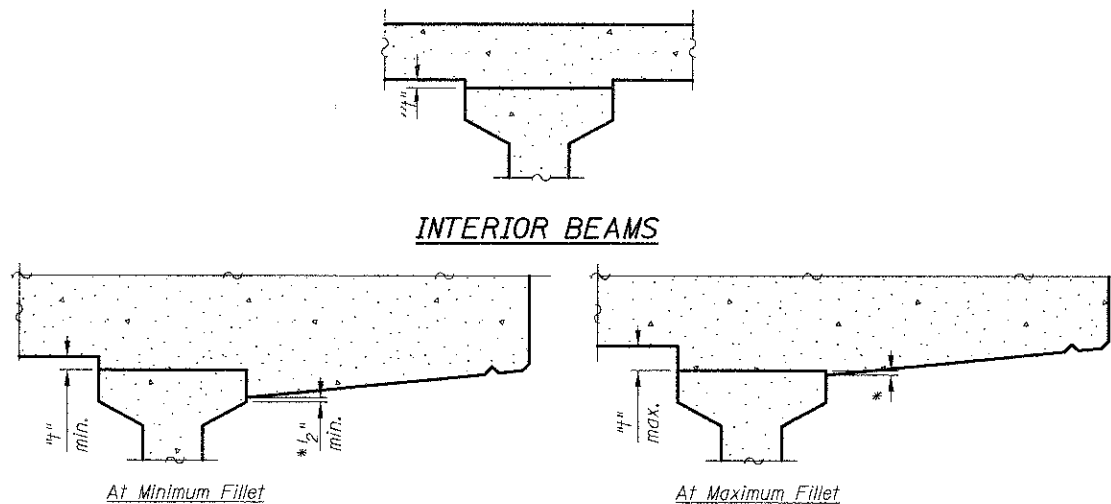


DEAD LOAD DEFLECTION DIAGRAM
(Includes weight of concrete, excluding beams)

Note:
The above deflections are not to be used in the field if the engineer is working from the grade elevations adjusted for dead load deflections as shown below and on sheet S4.

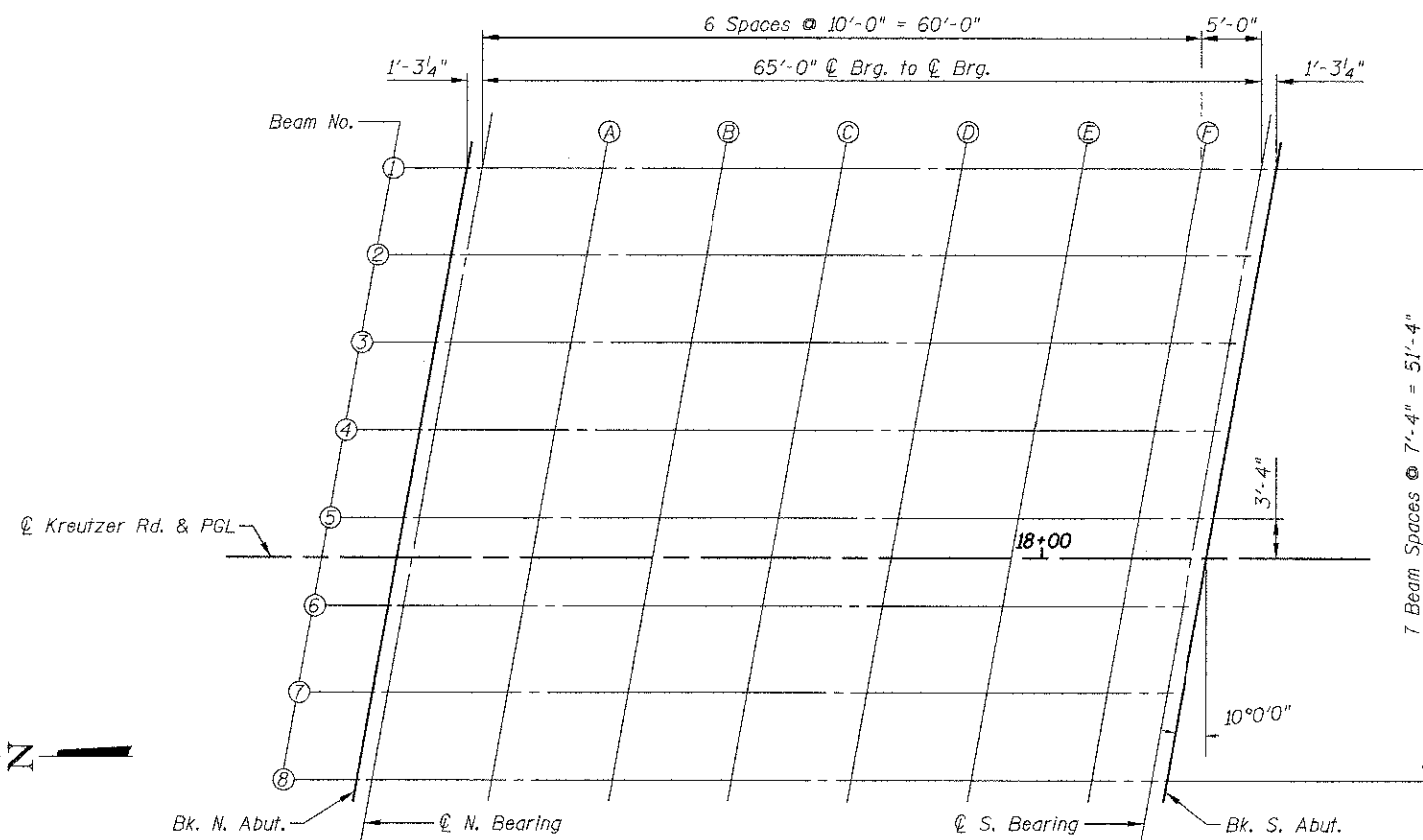


*Variable (not less than 1/2")

EXTERIOR BEAMS

METHOD OF DETERMINING FILLET HEIGHTS "t"

To determine "t": After all precast prestressed beams have been erected, elevations of the top flanges of the beams shall be taken at intervals shown below. These elevations subtracted from the "Theoretical Grade Elevations Adjusted for Dead Load Deflection" shown below and on sheet S4, minus 8" deck, equals the fillet heights "t" above top flanges of beams.



PLAN

BEAM 1

Location	Station	Offset	Theoretical Grade Elevations	Theoretical Grade Elevations Adjusted For Dead Load Deflection
Bk. N. Abut.	17+51.99	-32.67	876.18	876.18
CL Brg. N. Abut.	17+53.26	-32.67	876.18	876.18
A	17+63.26	-32.67	876.25	876.28
B	17+73.26	-32.67	876.31	876.36
C	17+83.26	-32.67	876.38	876.44
D	17+93.26	-32.67	876.44	876.50
E	18+03.26	-32.67	876.51	876.55
F	18+13.26	-32.67	876.57	876.59
CL Brg. S. Abut.	18+18.26	-32.67	876.61	876.61
Bk. S. Abut.	18+19.53	-32.67	876.62	876.62

BEAM 2

Location	Station	Offset	Theoretical Grade Elevations	Theoretical Grade Elevations Adjusted For Dead Load Deflection
Bk. N. Abut.	17+50.70	-25.33	876.32	876.32
CL Brg. N. Abut.	17+51.97	-25.33	876.33	876.33
A	17+61.97	-25.33	876.39	876.42
B	17+71.97	-25.33	876.46	876.51
C	17+81.97	-25.33	876.52	876.58
D	17+91.97	-25.33	876.59	876.64
E	18+01.97	-25.33	876.55	876.69
F	18+11.97	-25.33	876.72	876.73
CL Brg. S. Abut.	18+16.97	-25.33	876.75	876.75
Bk. S. Abut.	18+18.24	-25.33	876.76	876.76

BEAM 3

Location	Station	Offset	Theoretical Grade Elevations	Theoretical Grade Elevations Adjusted For Dead Load Deflection
Bk. N. Abut.	17+49.40	-18.00	876.46	876.46
CL Brg. N. Abut.	17+50.67	-18.00	876.47	876.47
A	17+60.67	-18.00	876.54	876.57
B	17+70.67	-18.00	876.60	876.65
C	17+80.67	-18.00	876.67	876.73
D	17+90.67	-18.00	876.73	876.79
E	18+00.67	-18.00	876.80	876.84
F	18+10.67	-18.00	876.86	876.88
CL Brg. S. Abut.	18+15.67	-18.00	876.90	876.90
Bk. S. Abut.	18+16.94	-18.00	876.90	876.90

10/18/2012 5:55:51 PM I:\2473\cad\sheet\7-Structures\bridge\03_Top of Slab Elev Idgn