

**GENERAL CONDITIONS**  
 IT IS THE INTENT OF THESE SPECIFICATIONS TO DESCRIBE THE LABOR AND MATERIALS REQUIRED FOR THE REFLECTORIZED PAVEMENT MARKERS OF SPECIFIC COUNTY ROADS IN ACCORDANCE WITH THE MANUAL ON UNIFORM TRAFFIC CONTROL DEVICES FOR STREETS AND ROADS, PART III, MARKINGS ON THE ILLINOIS DEPARTMENT OF TRANSPORTATION. ALL WORK SHALL COMPLY WITH SECTION 781 OF THE STANDARD SPECIFICATIONS.

**INSTALLATION**  
 THE RECESSED REFLECTIVE PAVEMENT MARKERS SHALL BE CONSTRUCTED BY REMOVING A 5" X 24" AREA OF THE BITUMINOUS PAVEMENT AT A DEPTH OF 3/4". THIS DEPRESSED AREA SHALL BE TAPERED VERTICALLY FROM THE FULL DEPTH OF 3/4 INCHES TO 0 INCHES IN 30 INCHES AT BOTH ENDS FOR THE TWO-WAY MARKERS AND AT THE APPROACH END ONLY FOR THE ONE-WAY MARKERS. THE DEPRESSED AREA SHALL BE ORIENTED LENGTHWISE AND LONGITUDINALLY WITH RESPECT TO THE ROADWAY.

A 3M 290 SERIES PAVEMENT MARKER OR APPROVED EQUIVALENT SHALL BE PLACED AND CEMENTED WITH EPOXY IN THE CENTER OF THE 3/4" DEEP DEPRESSED AREA.

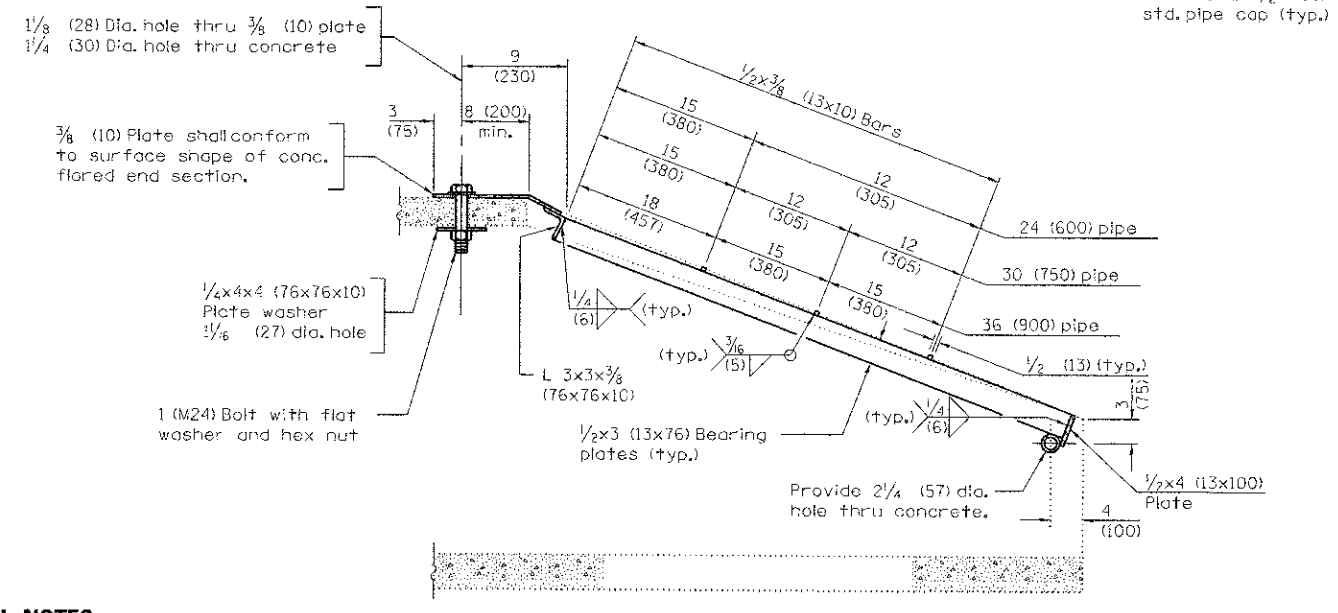
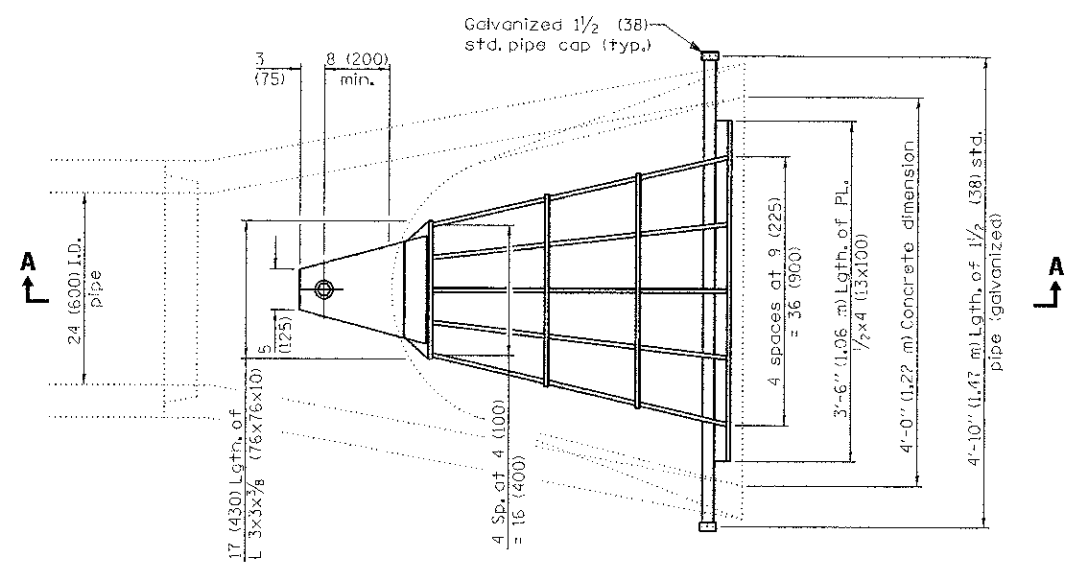
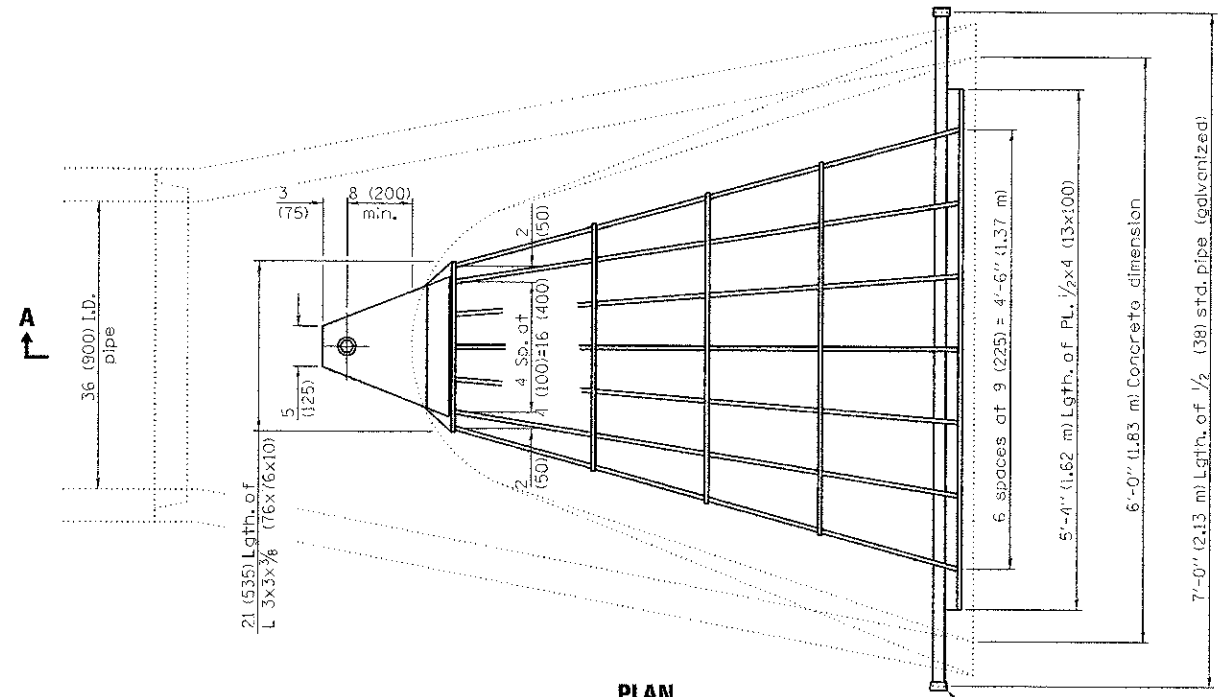
THE RECESSED AREA SHALL BE CLEANED FREE OF ALL LOOSE MATERIAL BY MEANS OF SAND BLASTING AND ALSO FREE OF MOISTURE BEFORE THE PLACEMENT OF THE PAVEMENT MARKER. ALL EXCESS MATERIAL RESULTING FROM THE CONSTRUCTION OF THE RECESSED AREA SHALL BE COMPLETELY REMOVED FROM THE SURFACE OF THE ROADWAY BY MEANS OF VACUUM SWEEPER TRUCK.

**INSTALLATION NOTES:**  
 1. SAWCUT (IN DIMENSION SHOWN).  
 2. SAWCUT AREAS TO BE DRY AND FREE OF MATERIAL THAT ADVERSELY AFFECTS THE ADHESIVE BOND.  
 3. INSTALL THE REFLECTOR WITH AN APPROVED TWO-COMPONENT EPOXY ADHESIVE. EPOXY SHOULD NOT OBSCURE OR BLOCK THE LENS.  
 4. INSTALL TOP OF REFLECTOR 1/2" TO 1/4" INCH BELOW THE PAVEMENT SURFACE.  
 5. REFLECTOR SHALL BE 3M SERIES.

**GENERAL NOTES:**  
 1. INSTALLATION SHALL CONFORM TO IDOT HIGHWAY STANDARDS 781001-02 (OR LATEST) FOR MARKER PLACEMENTS.  
 2. IDOT STANDARD 781001-02 SHALL BE MODIFIED TO REFLECT IN RECESSED PAVEMENT MARKERS INSTEAD OF RAISED PAVEMENT MARKERS.

**McHenry County Division of Transportation**  
 PERMIT PROCEDURES DETAIL NO. PPD14  
 RECESSED REFLECTIVE PAVEMENT MARKING APPLICATION

**GRATING FOR CONCRETE FLARED END SECTION**



**GENERAL NOTES**

Grating details shown are intended for use with particular sizes of precast reinforced concrete flared end sections as shown on standards 542301 and 542306.

Approximate quantity of steel shown includes total quantity of grating, bolts, nuts, washers and steel pipe.

Holes in the precast concrete flared end sections shall be cored to the diameters noted. If cone-out on the other end of the hole occurs, the hole shall be filled with grout to correct the diameter of the hole.

FILE NAME = ...2475.sht-details-22-mod.dgn	USER NAME = bas	DESIGNED - BAS	REVISED -	<b>STATE OF ILLINOIS DEPARTMENT OF TRANSPORTATION</b>	<b>MISCELLANEOUS DETAILS</b>	F.A.U. RTE. 4068	SECTION 07-0031-00-PV	COUNTY McHENRY	TOTAL SHEETS 167	SHEET NO. 136		
PLOT SCALE = 1/8" = 1' in.	PLOT DATE = 2/22/2013	DRAWN - BAS	REVISED -			SCALE: NONE	SHEET NO. 1 OF 1 SHEETS	STA. TO STA.	CONTRACT NO. 63743			
CHECKED - GAB	DATE - 10/22/12	REVISOR -	REVISOR -			FED. ROAD DIST. NO. 1 (ILLINOIS) FED. AID PROJECT XXX-XXXX						