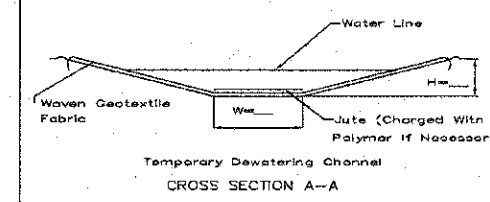
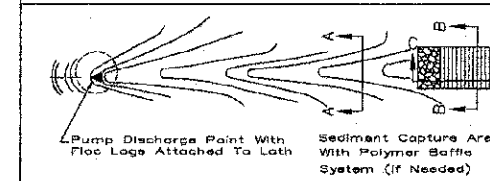
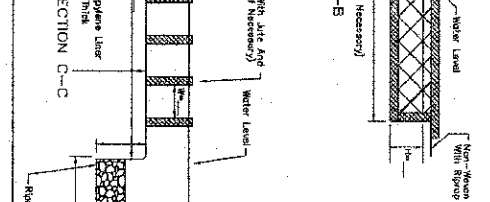
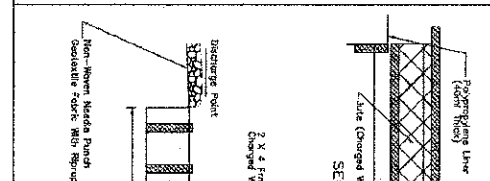


TEMPORARY MIXING SWALE WITH OPTIONAL BAFFLE PIT



REFERENCE	STANDARD DWG. NO.
Project	IUM-594A
Designed	SHEET 1 OF 1
Checked	DATE: 8-21-11
Approved	

TEMPORARY MIXING SWALE WITH OPTIONAL BAFFLE PIT



REFERENCE	STANDARD DWG. NO.
Project	IUM-594B
Designed	SHEET 2 OF 2
Checked	DATE: 8-21-11
Approved	



COPYRIGHT © 2004 BY BAXTER & WOODMAN, INC.  
 STATE OF ILLINOIS - PROFESSIONAL ENGINEER DESIGN FIRM  
 4700/2003  
 563632  
 \\userp01.sawwood.com\proj\10934\10934-02\er054-2\er054-2.dwg.plt  
 4/20/2012 11:58:32 AM

1 ADDENDUM 1



DESIGNED -	DJS	REVISED -	PER IDOT 10/19/12
DRAWN -	UKB	REVISED -	PER KDSWCD 04/09/13
CHECKED -	RWL	REVISED -	
DATE -	06/20/12	FILE -	110934-ER054-Detail.shp

STATE OF ILLINOIS  
DEPARTMENT OF TRANSPORTATION

EROSION CONTROL DETAILS

SCALE: NONE

STA. TO STA.

F.A.J. RTE.	SECTION	COUNTY	TOTAL SHEETS	SHEET NO.
4006	95-00049-00-PV	KANE	138	408
CONTRACT NO. 63745				
FED. ROAD DIST. NO. 3 (ILLINOIS) FED. AID PROJECT #4-8003 (056)				

1