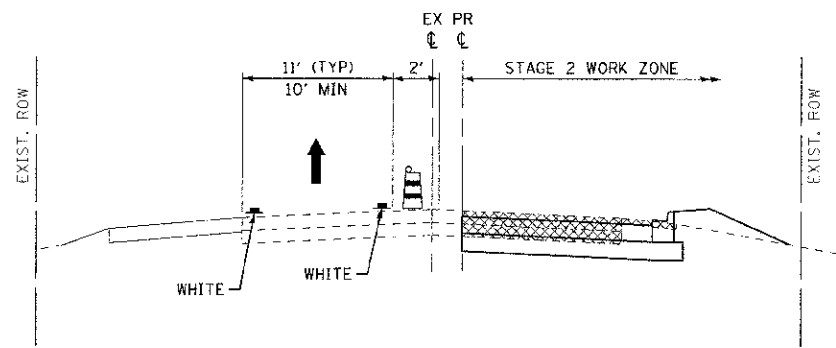
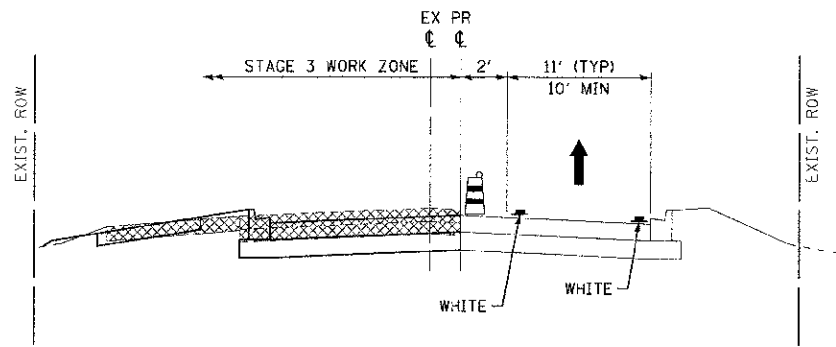


**SUGGESTED MOT - STAGE 1**  
**MAPLE AVENUE**  
 STA 127+75 TO STA 180+41



**SUGGESTED MOT - STAGE 2**  
**MAPLE AVENUE**  
 STA 127+75 TO STA 180+41



**SUGGESTED MOT - STAGE 3**  
**MAPLE AVENUE**  
 STA 127+75 TO STA 180+41

- LEGEND**
- DIRECTION OF TRAFFIC
  - DRUMS
  - EXISTING ELEMENTS
  - PROPOSED ELEMENTS FROM PRIOR STAGES
  - PROPOSED ELEMENTS
  - EXISTING PAVEMENT MARKINGS
  - TEMPORARY PAVEMENT MARKINGS - 4"
  - REMOVAL

COPYRIGHT © 2012 BY BAXTER S. WOODMAN, INC.  
 STATE OF ILLINOIS - PROFESSIONAL DESIGN FIRM  
 200 S. WASHINGTON ST., SUITE 1000, CHICAGO, IL 60604  
 TEL: 312.467.1200 FAX: 312.467.1201  
 WWW.BAXTERWOODMAN.COM



DESIGNED - DJS	REVISED - PER 1001 10/19/12
DRAWN - UKB	REVISED -
CHECKED - RWL	REVISED -
DATE - 06/20/12	FILE - 110994-MOT-GNTS.shp

**STATE OF ILLINOIS**  
**DEPARTMENT OF TRANSPORTATION**

**CONSTRUCTION STAGING NOTES**

SCALE: NO SCALE STA. TO STA.

F.A.U. RTE.	SECTION	COUNTY	TOTAL SHEETS	SHEET NO.
4005	95-00049-00-PV	KANE	138	16
FED. ROAD DIST. NO. 1 ILLINOIS FED. AID PROJECT W-8003-10951			CONTRACT NO. 63745	