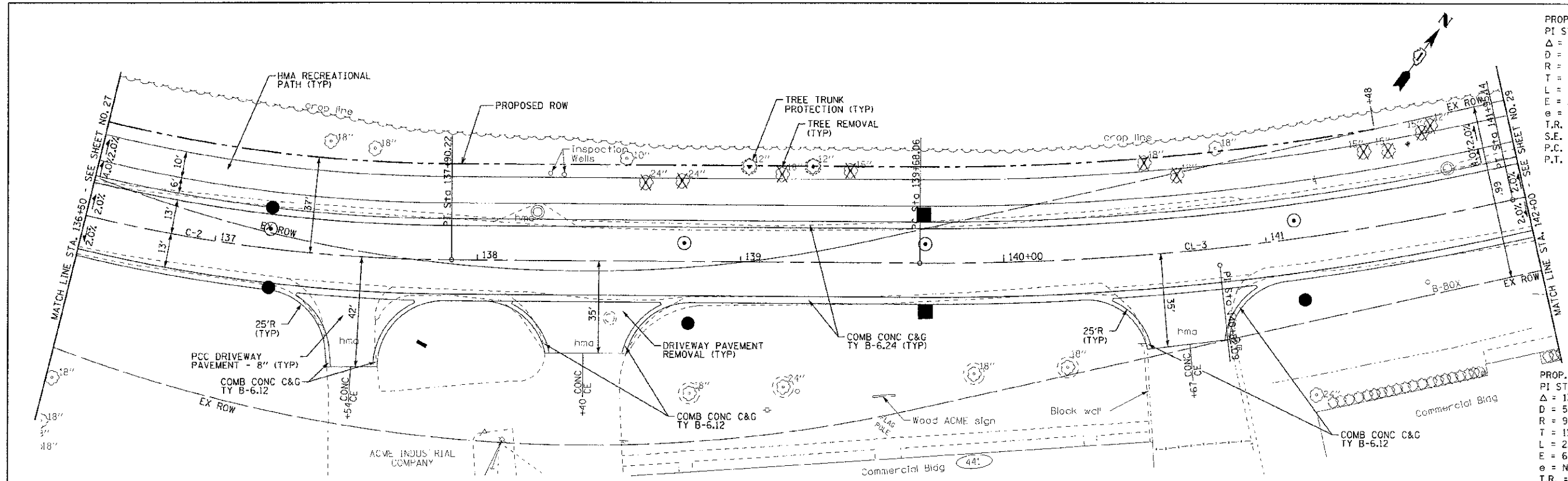
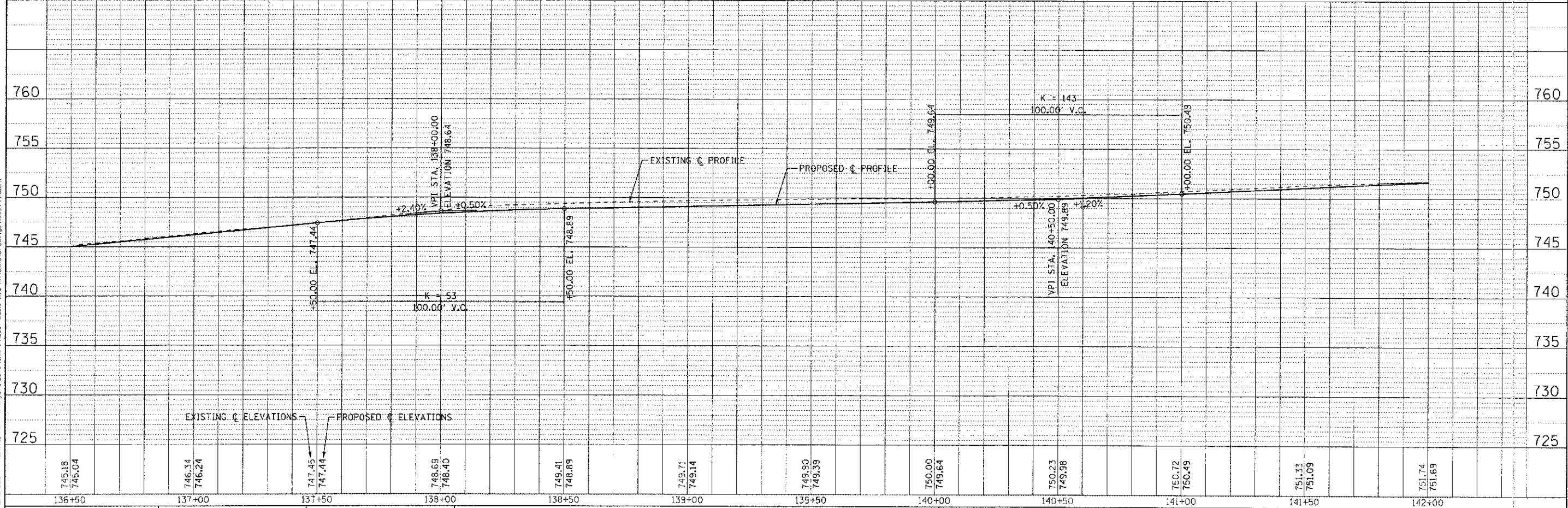


PROP. CURVE MAPLE-CL-2
 PI STA. = 136+12.90
 $\Delta = 34^\circ 59' 49''$ (LT)
 $D = 9^\circ 32' 55''$
 $R = 599.97'$
 $T = 189.15'$
 $L = 366.47'$
 $e = 29.11'$
 $e = NC$
 T.R. = NA
 S.E. RUN = NA
 P.C. STA = 134+23.75
 P.T. STA = 137+90.22

PROP. CURVE MAPLE-CL-3
 PI STA. = 140+82.09
 $\Delta = 13^\circ 00' 40''$ (LT)
 $D = 5^\circ 43' 48''$
 $R = 999.94'$
 $T = 114.03'$
 $L = 227.07'$
 $E = 6.48'$
 $e = NC$
 T.R. = NA
 S.E. RUN = NA
 P.C. STA = 139+68.06
 P.T. STA = 141+95.14



MAPLE AVENUE



DRAWN BY: D.J.S. (DESIGNED BY) / U.K.B. (DRAWN BY) / R.W. (CHECKED BY) / 06/20/12 (DATE)
 PROJECT: 95-00049-00-PV
 SHEET: 13B OF 28
 CONTRACT: 63745
 STATE OF ILLINOIS DEPARTMENT OF TRANSPORTATION
 PROJECT: ILLINOIS FED. AID PROJECT M-8003 (0957)

	DESIGNED - DJS	REVISED - PER IDOT 10/19/12	STATE OF ILLINOIS DEPARTMENT OF TRANSPORTATION	GEOMETRIC PLAN AND PROFILE MAPLE AVENUE		F.A. RTE. 4006	SECTION 95-00049-00-PV	COUNTY KANE	TOTAL SHEETS 13B	SHEET NO. 28
	DRAWN - UKB	REVISED -		SCALE: H: 1"=20' V: 1"=5'		STA. 136+50	TO STA. 142+00	CONTRACT NO. 63745		
CHECKED - RW	REVISED -	FILE 110994 PP6.sht			FED. ROAD DIST. NO. 1 ILLINOIS FED. AID PROJECT M-8003 (0957)					
DATE 06/20/12										