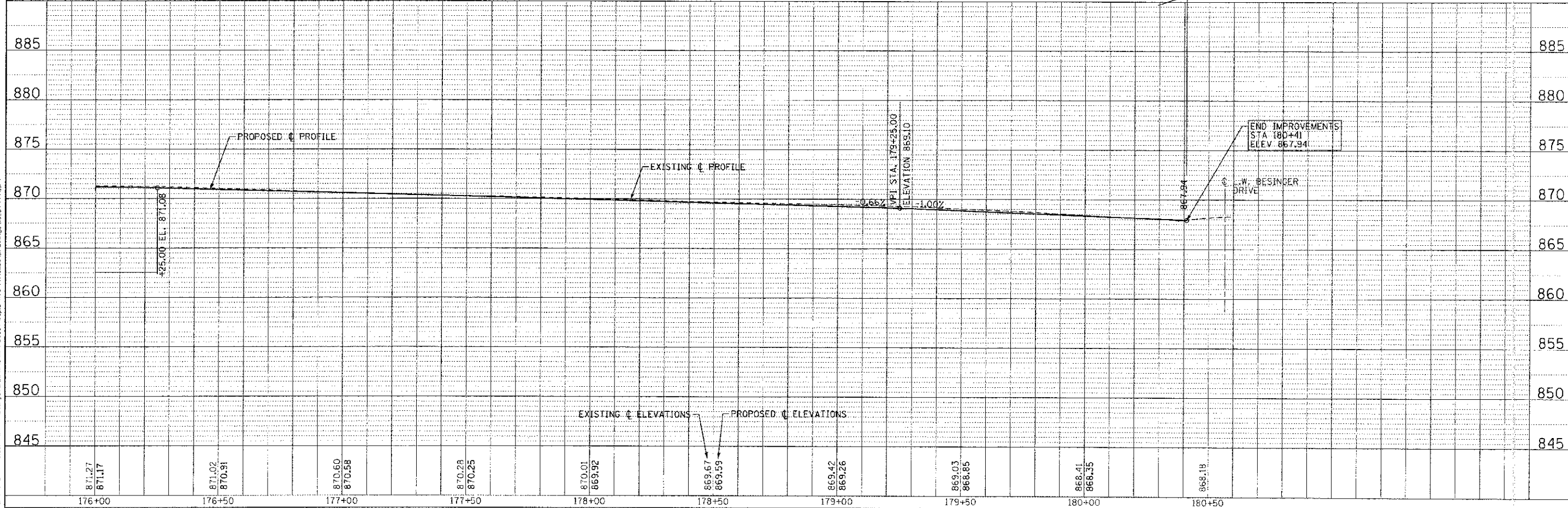


MAPLE AVENUE



CARPENTERSVILLE VILLAGE HALL & POLICE DEPARTMENT
 STATE OF ILLINOIS - PROFESSIONAL DESIGN FIRM
 LICENSE NO. 18-00273 - EXPIRES 12/31/2012
 12/25/2012 3:58PM
 ...\\hwy\proj\110994-PP14\Maple_Ave_Plan\Maple_Ave_Plan.dwg
 12/25/2012 3:58PM

DESIGNED	DJS	REVISED	- PER IDOT 10/19/12
DRAWN	UKB	REVISED	
CHECKED	RWL	REVISED	
DATE	06/20/12	FILE	110994-PP14.sht

STATE OF ILLINOIS
DEPARTMENT OF TRANSPORTATION

GEOMETRIC PLAN AND PROFILE
MAPLE AVENUE

SCALE: H: 1"=20' V: 1"=5'
STA. 176+00 TO STA. 180+50

F.A. RTE.	SECTION	COUNTY	TOTAL SHEETS
4006	95-00049-00-PV	KANE	36
FED. ROAD DIST. NO. 1		ILLINOIS	FED. AID PROJECT M-8003 (095)
CONTRACT NO. 63745		SHEET NO. 36	