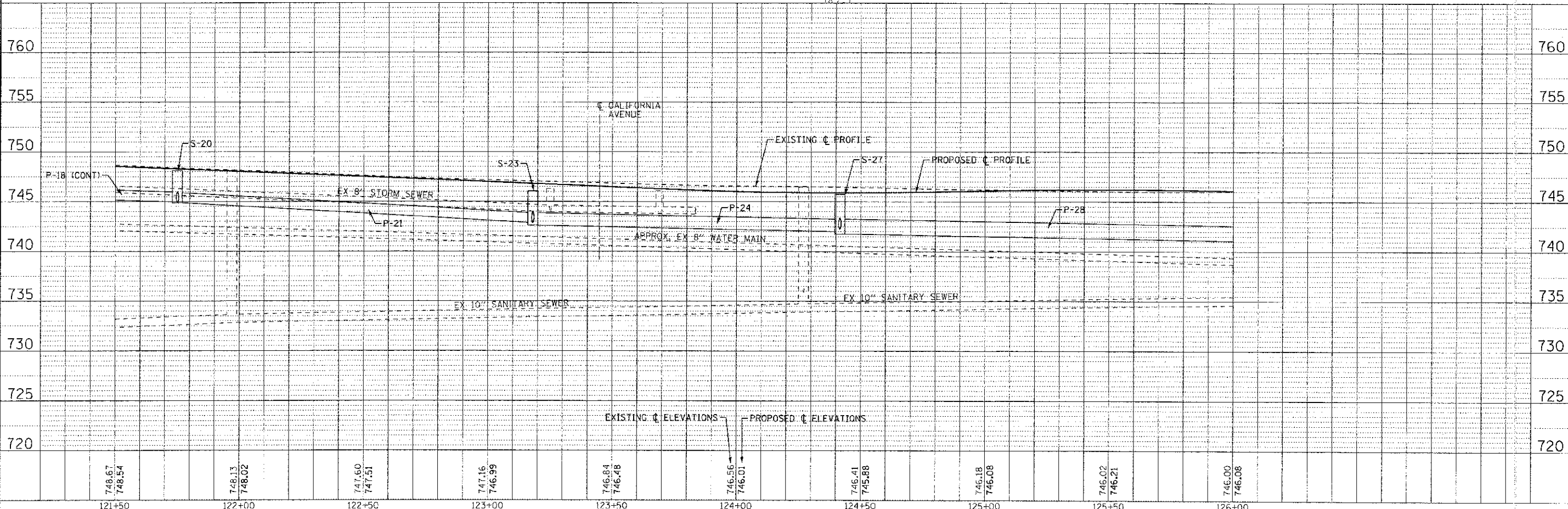
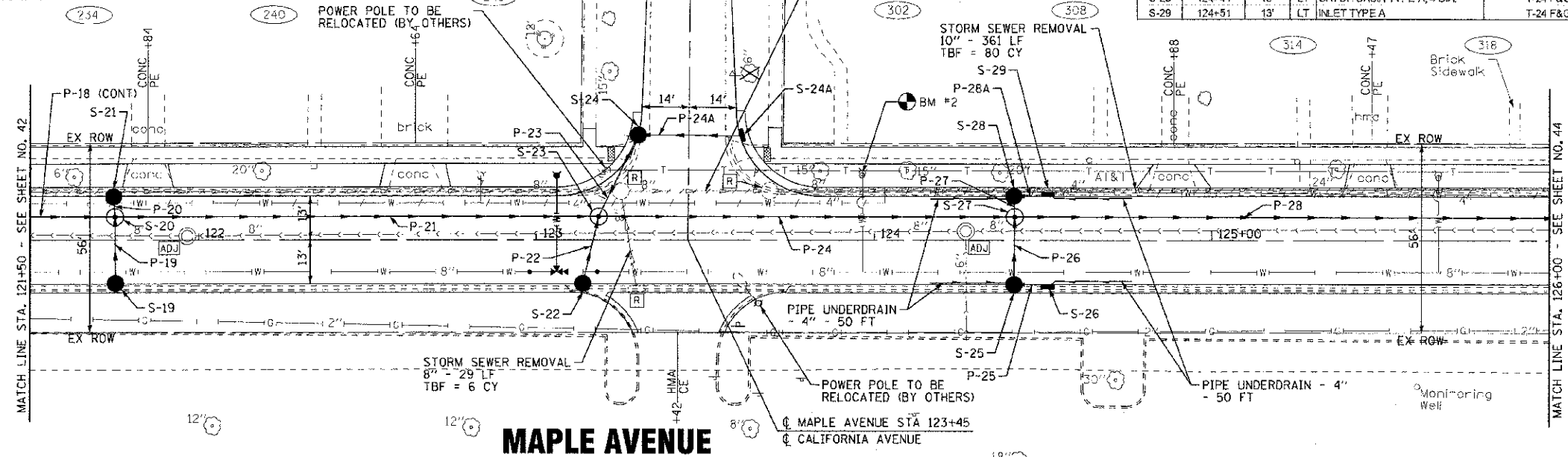


PIPES						
NO.	TYPE	TY	DIA. (IN)	LENGTH (FT)	SLOPE	TBF (CY)
P-19	STORM SEWERS, CLASS A, RUBBER GASKET	1	12	20	0.66%	8
P-20	STORM SEWERS, CLASS A, RUBBER GASKET	1	12	6	0.50%	2
P-21	STORM SEWERS (WATER MAIN REQUIREMENTS)	1	12	143	1.40%	37
P-22	STORM SEWERS, CLASS A, RUBBER GASKET	1	12	20	2.55%	6
P-23	STORM SEWERS (WATER MAIN REQUIREMENTS)	1	12	27	0.89%	7
P-24	STORM SEWERS (WATER MAIN REQUIREMENTS)	1	15	123	0.49%	38
P-24A	STORM SEWERS, CLASS A, RUBBER GASKET	1	12	30	0.50%	8
P-25	STORM SEWERS, CLASS A, RUBBER GASKET	1	12	10	0.90%	3
P-26	STORM SEWERS, CLASS A, RUBBER GASKET	1	12	20	1.00%	5
P-27	STORM SEWERS, CLASS A, RUBBER GASKET	1	12	6	1.67%	2
P-28	STORM SEWERS (WATER MAIN REQUIREMENTS)	1	12	10	0.50%	84
P-28	STORM SEWERS, CLASS A, RUBBER GASKET	1	18	218	0.44%	3

STRUCTURES									
LABEL	STATION	OFFSET (FT)	TYPE	FRAME	ELEVATION	RIM/E	Elevation (invert) (ft)		
S-19	121+75	13'	RT	CATCH BASIN TYPE C	T-24 F&G	748.02	EP	745.00	12°N
S-20	121+75	7'	LT	MANHOLE TYPE A, 4'DIA.	T-1 F, C.L.	748.14	RIM	744.87	12°E, S, 744.97 12°N, W
S-21	121+75	13'	LT	CATCH BASIN TYPE C	T-24 F&G	748.02	EP	745.00	12°S
S-22	123+14	13'	RT	CATCH BASIN TYPE C	T-24 F&G	746.63	EP	743.46	12°N
S-23	123+18	7'	LT	MANHOLE TYPE A, 4'DIA.	T-1 F, C.L.	746.04	RIM	742.60	15°E, 742.85 12°N, 742.95S, 742.87 12°W
S-24	123+30	31'	LT	CATCH BASIN TYPE C	T-24 F&G	746.26	EP	743.09	12°S, 743.19 12°W
S-24A	123+60	31'	LT	INLET TYPE A	T-24 F&G	746.25	EP	743.34	12°E
S-25	124+41	13'	RT	CATCH BASIN TYPE A, 4'DIA.	T-24 F&G	745.61	EP	742.45	12°N, 742.55 12°E
S-26	124+51	13'	RT	INLET TYPE A	T-24 F&G	745.62	EP	742.60	12°W
S-27	124+41	7'	LT	MANHOLE TYPE A, 4'DIA.	T-1 F, C.L.	745.73	RIM	741.75	18°E, 742.00 15°W, 742.35 12°N, 742.25 12°S
S-28	124+41	13'	LT	CATCH BASIN TYPE A, 4'DIA.	T-24 F&G	745.61	EP	742.45	12°S, 742.55 12°E
S-29	124+51	13'	LT	INLET TYPE A	T-24 F&G	745.62	EP	742.60	12°W



COPYRIGHT © 2012 BY BAXTER WOODMAN ENGINEERING, INC. ALL RIGHTS RESERVED. THIS DOCUMENT IS THE PROPERTY OF BAXTER WOODMAN ENGINEERING, INC. AND IS NOT TO BE REPRODUCED OR TRANSMITTED IN ANY FORM OR BY ANY MEANS, ELECTRONIC OR MECHANICAL, INCLUDING PHOTOCOPYING, RECORDING, OR BY ANY INFORMATION STORAGE AND RETRIEVAL SYSTEM.

DESIGNED - AMW	REVISED - PER IDOT 10/19/12
DRAWN - JKB	REVISED
CHECKED - RWL	REVISED
DATE - 06/20/12	FILE - 110994-DU3.sht

STATE OF ILLINOIS
DEPARTMENT OF TRANSPORTATION

DRAINAGE AND UTILITY MAPLE AVENUE	
SCALE: H: 1"=20' V: 1"=5'	STA. 121+50 TO STA. 126+00

F.A. RTE. 4006	SECTION 95-00C49-0C-PV	COLNTY KANE	TOTAL SHEETS 138	SHEET NO. 43
FED. ROAD DIST. NO. 1 ILLINOIS FED. AID PROJECT M-8003 (095)			CONTRACT NO. 63745	