

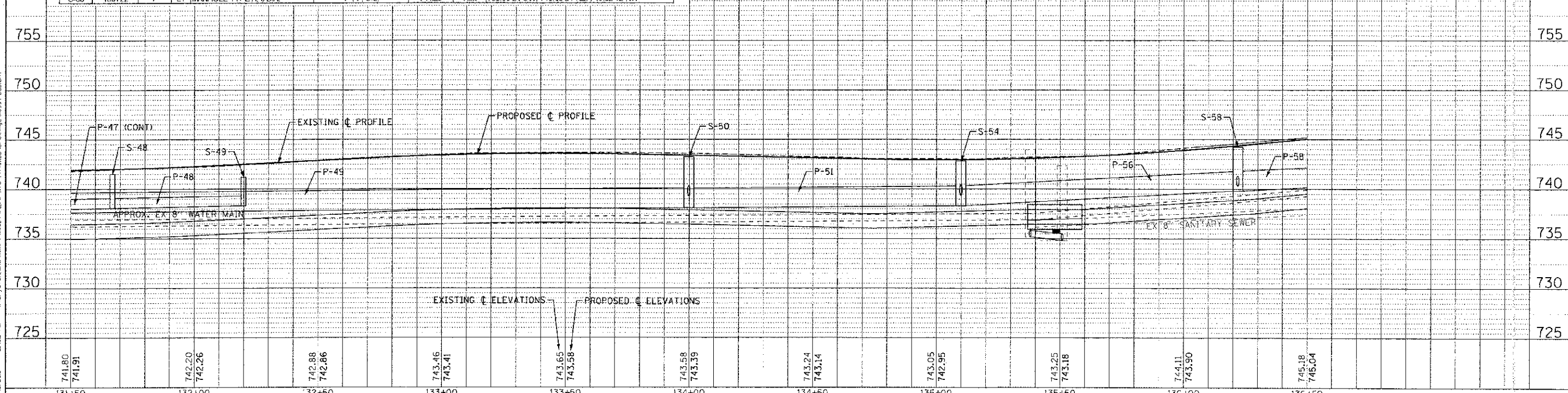
STRUCTURES

LABEL	STATION	OFFSET (FT)	TYPE	FRAME	ELEVATION	RIM/EP	Elevation (invert) (ft)
S-48	131+67	20.5'	RT INLET TYPE A	T-8 G	741.50	RIM	738.07 12"E, W
S-49	132+20	23'	RT INLET TYPE A	T-8 G	741.20	RIM	738.30 12"W
S-50	134+00	7'	LT MANHOLE TYPE A, 6'DIA	T-1 F, C.L	743.25	RIM	738.10 24"x38"W, 738.10 24"E, 739.30 12"N
S-51	134+00	36'	LT CATCH BASIN TYPE C	T-8 G	742.70	RIM	739.50 12"S
S-52	135+02	13'	LT INLET TYPE A	T-24 F&G	742.69	EP	739.65 12"E
S-53	135+10	13'	LT CATCH BASIN TYPE A, 4'DIA	T-24 F&G	742.70	EP	739.60 12"S, 739.60 12"W
S-54	135+10	7'	LT MANHOLE TYPE A, 6'DIA	T-1 F, C.L	742.82	RIM	738.30 24"W, 738.80 24"NE, 739.36 12"S, 739.45 12"N
S-55	135+02	13'	RT INLET TYPE A	T-24 F&G	742.69	EP	739.65 12"E
S-56	135+10	13'	RT CATCH BASIN TYPE A, 4'DIA	T-24 F&G	742.70	EP	739.49 12"N, 739.69 12"W
S-57	136+00	34'	LT CATCH BASIN TYPE C	T-8 G	743.50	RIM	740.50 12"SE
S-58	136+22	7'	LT MANHOLE TYPE A, 6'DIA	T-1 F, C.L	744.23	RIM	739.80 24"SW, 740.00 24"NE, 740.32 12"NW

PIPES

NO.	TYPE	TY	DIA (IN)	LENGTH (FT)	SLOPE	TBF (Y)
P-48	STORM SEWERS (WATER MAIN REQUIREMENTS)	1	12	53	0.43%	14
P-49	STORM SEWERS, CLASS A, RUBBER GASKET	1	24x38	286	0.15%	203
P-50	STORM SEWERS, CLASS A, RUBBER GASKET	1	12	29	0.89%	9
P-51	STORM SEWERS, CLASS A, RUBBER GASKET	1	24	108	0.28%	74
P-52	STORM SEWERS, CLASS A, RUBBER GASKET	1	12	8	0.62%	2
P-53	STORM SEWERS, CLASS A, RUBBER GASKET	1	12	6	0.83%	2
P-54	STORM SEWERS, CLASS A, RUBBER GASKET	1	12	20	0.85%	6
P-55	STORM SEWERS (WATER MAIN REQUIREMENTS)	1	12	9	0.67%	3
P-56	STORM SEWERS, CLASS A, RUBBER GASKET	1	24	111	0.90%	43
P-57	STORM SEWERS, CLASS A, RUBBER GASKET	1	12	34	0.53%	10
P-58	STORM SEWERS, CLASS A, RUBBER GASKET	1	24	97	1.03%	71

MAPLE AVENUE



CONTRACT NO. 95-00049-CO-PV
 STATE OF ILLINOIS PROFESSIONAL DESIGN FORM
 LICENSE NO. 186-000071 EXP. 05/31/2013
 23/03/02
 24045 PW
 PROJECT: 95-00049-CO-PV
 SHEET: 45 OF 45
 DATE: 06/20/12
 FILE: 110994-DU5.shrt
 DRAWN: UKB
 CHECKED: RWL
 DATE: 06/20/12
 DESIGNED: AMM
 REVISIONS: PER IDOT 10/15/12
 REVISIONS:
 REVISIONS:
 FILE: 110994-DU5.shrt
 CONTRACT NO. 63745
 ILLINOIS FED. AID PROJECT W-8003 1095



DESIGNED - AMM	REVISIONS - PER IDOT 10/15/12
DRAWN - UKB	REVISIONS -
CHECKED - RWL	REVISIONS -
DATE - 06/20/12	FILE - 110994-DU5.shrt

STATE OF ILLINOIS
DEPARTMENT OF TRANSPORTATION

DRAINAGE AND UTILITY
MAPLE AVENUE

SCALE: H: 1"=20' V: 1"=5'
 STA. 131+50 TO STA. 136+50

F.A. RTE. 4006	SECTION 95-00049-CO-PV	COUNTY KANE	TOTAL SHEETS NO. 138
		CONTRACT NO. 63745	45
FED. ROAD DIST. NO. 1 ILLINOIS FED. AID PROJECT W-8003 1095			