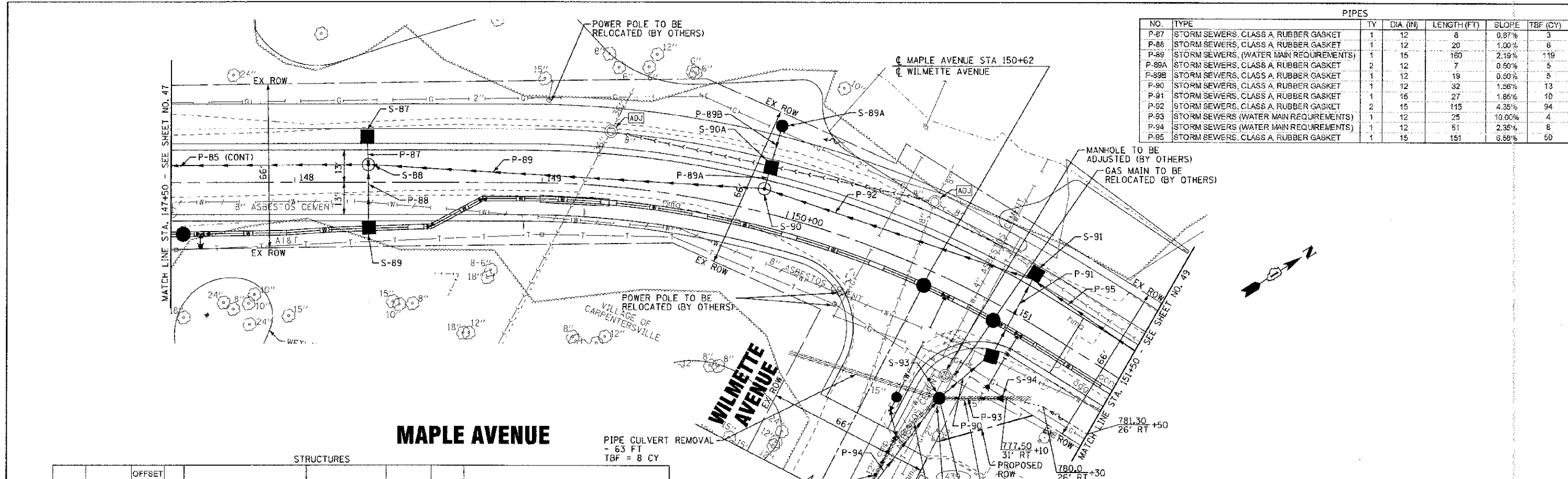


PIPES						
NO.	TYPE	TY	DIA (IN)	LENGTH (FT)	SLOPE	TBF (CY)
P-87	STORM SEWERS, CLASS A RUBBER GASKET	1	12	8	0.87%	3
P-88	STORM SEWERS, CLASS A RUBBER GASKET	1	12	20	1.00%	6
P-89	STORM SEWERS, (WATER MAIN REQUIREMENTS)	1	15	160	2.19%	119
P-89A	STORM SEWERS, CLASS A RUBBER GASKET	2	12	7	0.50%	5
P-89B	STORM SEWERS, CLASS A RUBBER GASKET	1	12	19	0.50%	5
P-90	STORM SEWERS, CLASS A RUBBER GASKET	1	12	32	1.56%	13
P-91	STORM SEWERS, CLASS A RUBBER GASKET	1	16	27	1.86%	10
P-92	STORM SEWERS, CLASS A RUBBER GASKET	2	15	115	4.35%	94
P-93	STORM SEWERS, (WATER MAIN REQUIREMENTS)	1	12	25	10.00%	4
P-94	STORM SEWERS, (WATER MAIN REQUIREMENTS)	1	12	51	2.35%	8
P-95	STORM SEWERS, CLASS A RUBBER GASKET	1	15	151	6.58%	50



STRUCTURES

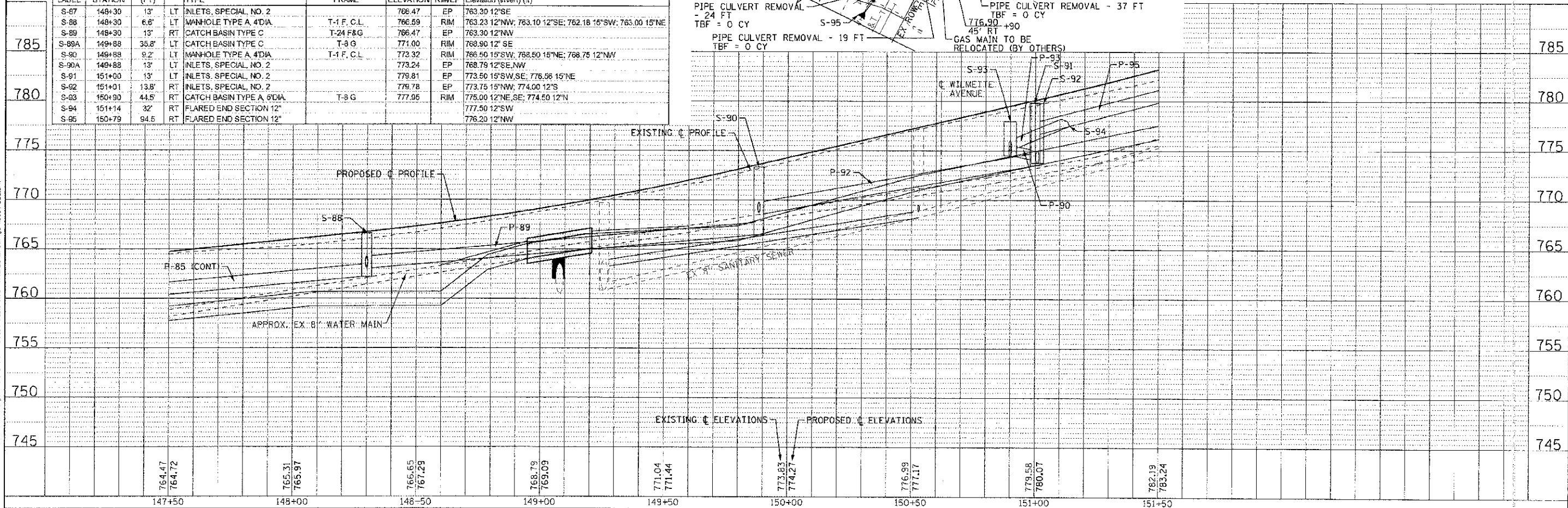
LABEL	STATION	OFFSET (FT)	TYPE	FRAME	ELEVATION	RIM/EP	Elevation (invert) (ft)
S-87	148+30	13'	LT INLETS, SPECIAL NO. 2		766.47	EP	763.30 12"SE
S-88	148+30	6.6'	LT MANHOLE TYPE A, 4'DIA	T-1 F, C.L.	766.59	RIM	763.23 12"NW; 763.10 12"SE; 762.18 15"SW; 765.00 15"NE
S-89	148+30	13'	RT CATCH BASIN TYPE C	T-24 F&G	766.47	EP	763.30 12"NW
S-89A	149+88	35.8'	LT CATCH BASIN TYPE C	T-8 G	771.00	RIM	768.90 12" SE
S-90	149+88	9.2'	LT MANHOLE TYPE A, 4'DIA	T-1 F, C.L.	773.32	RIM	766.50 15"SW; 768.50 15"NE; 768.75 12"NW
S-90A	149+88	13'	LT INLETS, SPECIAL NO. 2		773.24	EP	768.79 12"SE, NW
S-91	151+00	13'	LT INLETS, SPECIAL NO. 2		779.81	EP	773.50 15"SW, SE; 776.56 15"NE
S-92	151+01	13.8'	RT INLETS, SPECIAL NO. 2		779.78	EP	773.75 15"NW; 774.00 12"S
S-93	150+90	44.5'	RT CATCH BASIN TYPE A, 6'DIA	T-8 G	777.96	RIM	775.00 12"NE, SE; 774.50 12"N
S-94	151+14	32'	RT FLARED END SECTION 12"				777.50 12"SW
S-95	150+79	94.5'	RT FLARED END SECTION 12"				776.20 12"NW

PIPE CULVERT REMOVAL
- 63 FT
TBF = 8 CY

PIPE CULVERT REMOVAL
- 24 FT
TBF = 0 CY

PIPE CULVERT REMOVAL - 19 FT
TBF = 0 CY

PIPE CULVERT REMOVAL - 37 FT
TBF = 0 CY



COPYRIGHT © 2012 BY BAXTER & WOODMAN, INC.
 STATE OF ILLINOIS - PROFESSIONAL DESIGN FIRM
 LICENSE NO. - 184-000277 - EXP. DATE 7/31/2013
 PROJECT NO. - 95-00049-00-PV
 SHEET NO. - 138 OF 148
 DATE - 06/20/12



DESIGNED - AMM/SNV	REVISED - PCR JDOT 10/19/12
DRAWN - UKB	REVISED
CHECKED - RWL	REVISED
DATE - 06/20/12	FILE - 110994-DUB.sht

STATE OF ILLINOIS
DEPARTMENT OF TRANSPORTATION

DRAINAGE AND UTILITY
MAPLE AVENUE

SCALE: H: 1"=20' V: 1"=5'

STA. 147+50 TO STA. 151+50

F.A. R.F.E. 4006	SECTION 95-00049-00-PV	COUNTY KANE	TOTAL SHEETS NO. 138	SHEET NO. 48
FED. ROAD DIST. NO. 1 (ILLINOIS) FED. AID PROJECT N-6003 (095)			CONTRACT NO. 63745	