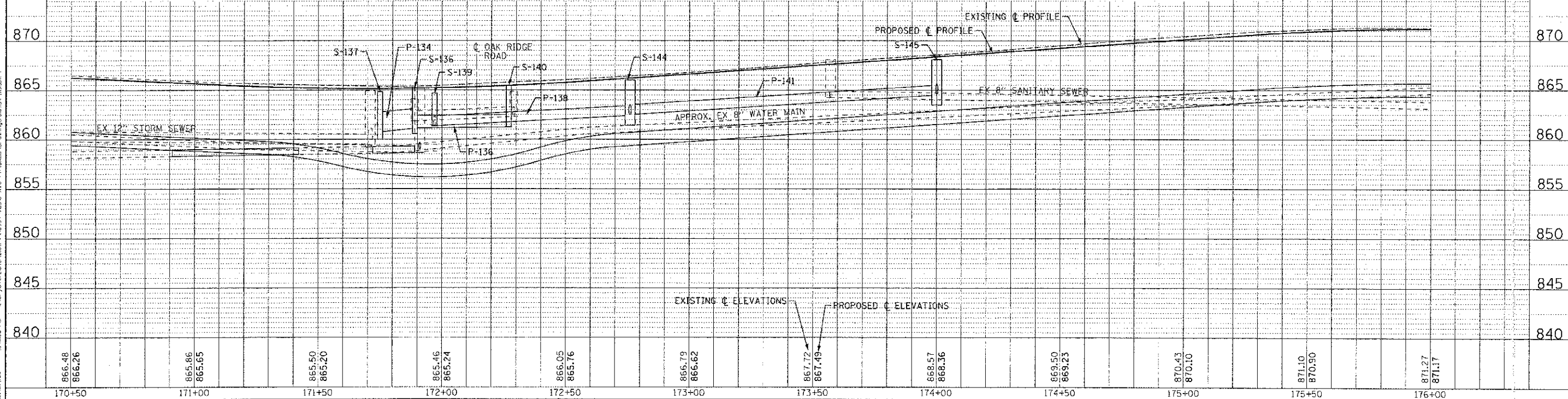


PIPES						
NO.	TYPE	TY	DIA. (IN)	LENGTH (FT)	SLOPE	TBF (CY)
P-129	STORM SEWERS (WATER MAIN REQUIREMENTS)	1	15	99	0.51%	16
P-130	STORM SEWERS (WATER MAIN REQUIREMENTS)	1	12	12	0.50%	3
P-131	STORM SEWERS (WATER MAIN REQUIREMENTS)	1	12	8	4.87%	2
P-132	STORM SEWERS (WATER MAIN REQUIREMENTS)	1	15	35	0.40%	12
P-133	STORM SEWERS (WATER MAIN REQUIREMENTS)	1	18	26	0.50%	7
P-134	STORM SEWERS, CLASS A, RUBBER GASKET	1	24	49	0.73%	34
P-135	STORM SEWERS, CLASS A, RUBBER GASKET	1	24	7	1.43%	6
P-136	STORM SEWERS (WATER MAIN REQUIREMENTS)	1	15	39	0.26%	15
P-137	STORM SEWERS, CLASS A, RUBBER GASKET	1	15	10	1.00%	4
P-138	STORM SEWERS, CLASS A, RUBBER GASKET	1	12	81	1.30%	23
P-140	STORM SEWERS, CLASS A, RUBBER GASKET	1	12	27	1.07%	8
P-141	STORM SEWERS, CLASS A, RUBBER GASKET	1	12	125	1.59%	38
P-143	STORM SEWERS (WATER MAIN REQUIREMENTS)	1	12	26	1.54%	8

STRUCTURES									
LABEL	STATION	OFFSET (FT)	TYPE	FRAME	ELEVATION	RIM/EP	Elevation (invert) (ft)		
880	S-131	170+95	23'	RT	INLET TYPE B	T-8 G	864.50	EP	861.30 16"E
	S-132	171+54	21'	RT	CATCH BASIN TYPE A, 4'DIA.	T-8 G	864.23	RM	861.24 16"E,W; 861.50 12"N
	S-133	171+42	13'	RT	INLET TYPE A	T-24 F&G	864.94	EP	861.95 12"E
	S-134	171+54	13'	RT	INLET TYPE B	T-24 F&G	864.93	EP	861.89 12"S,W
	S-135	171+87	55'	RT	CATCH BASIN TYPE A, 4'DIA.	T-8 G	864.40	RM	861.73 18"N
875	S-136	171+89	29.6'	RT	MANHOLE TYPE A, 6'DIA.	T-1 F, C.L.	865.24	RM	861.10 24"NW; 861.50 18"S; 861.10 15"E,W
	S-137	171+75	16.4'	LT	CATCH BASIN TYPE A, 5'DIA.	T-24 F&G	864.84	EP	860.00 24"NW; 860.74 24"SE

STRUCTURES (CONT)									
LABEL	STATION	OFFSET (FT)	TYPE	FRAME	ELEVATION	RIM/EP	Elevation (invert) (ft)		
	S-139	171+97	30.6'	LT	CATCH BASIN TYPE A, 4'DIA.	T-24 F&G	864.68	RM	861.36 12"E; 861.36 12"N ex
	S-140	172+75	13'	RT	CATCH BASIN TYPE A, 4'DIA.	T-24 F&G	865.48	EP	861.25 15"W; 861.35 15"S
	S-141	172+29	45'	RT	CATCH BASIN TYPE A, 4'DIA.	T-8 G	864.75	RM	861.45 16"N; 861.45 12"S ex
	S-142	172+75	13'	RT	CATCH BASIN TYPE C	T-24 F&G	865.93	EP	862.80 12"N
	S-144	172+76	14'	LT	CATCH BASIN TYPE A, 4'DIA.	T-24 F&G	866.01	EP	862.51 12"E,S; 862.41 12"W
	S-145	174+00	13'	LT	CATCH BASIN TYPE A, 4'DIA.	T-24 F&G	868.10	EP	864.60 12"E; 864.50 12"W
	S-147	174+00	13'	RT	CATCH BASIN TYPE C	T-24 F&G	868.10	EP	865.00 12"N



CONTRACT NO. 95-00049-00-PV
 STATE OF ILLINOIS
 DEPARTMENT OF TRANSPORTATION
 DRAWN - UKB
 CHECKED - RWL
 DATE - 06/20/12
 FILE - 110994-DU13.sht

DESIGNED - AMM	REVISED - PER IDOT 10/19/12
DRAWN - UKB	REVISED -
CHECKED - RWL	REVISED -
DATE - 06/20/12	FILE - 110994-DU13.sht

STATE OF ILLINOIS
DEPARTMENT OF TRANSPORTATION

DRAINAGE AND UTILITY
MAPLE AVENUE

SCALE: H: 1"=20' V: 1"=5'

STA. 170+50 TO STA. 176+00

F.A. RTE. 4006	SECTION 95-00049-00-PV	COUNTY KANE	TOTAL SHEETS 138	SHEET NO. 53
CONTRACT NO. 63745			FED. ROAD DIST. NO. 1 ILLINOIS; FED. AID PROJECT W-803 (095)	