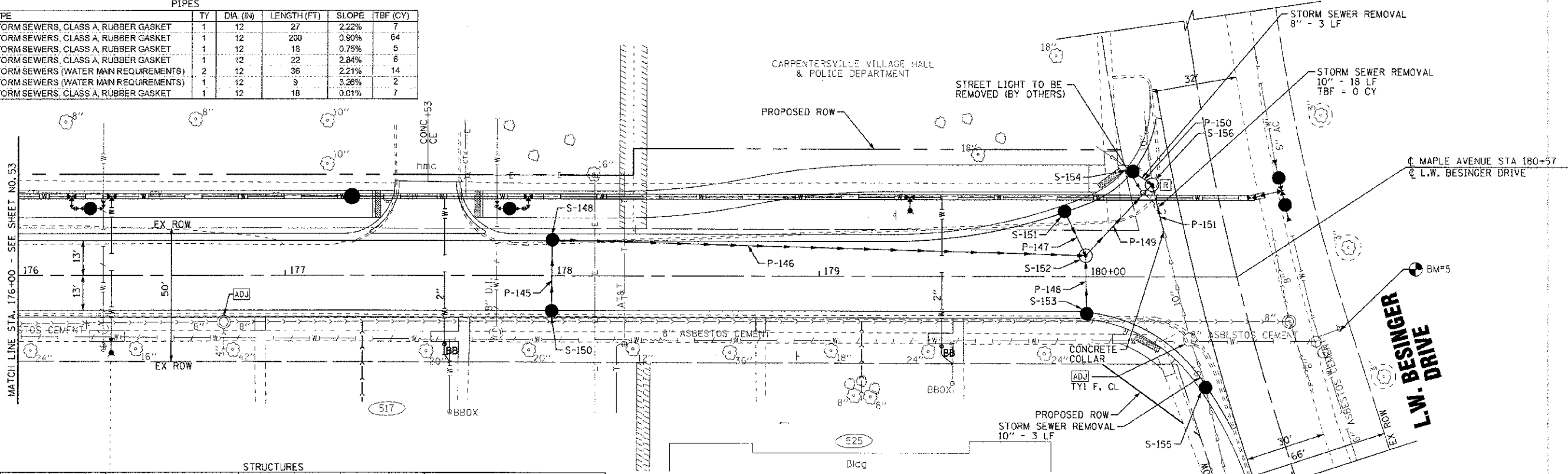
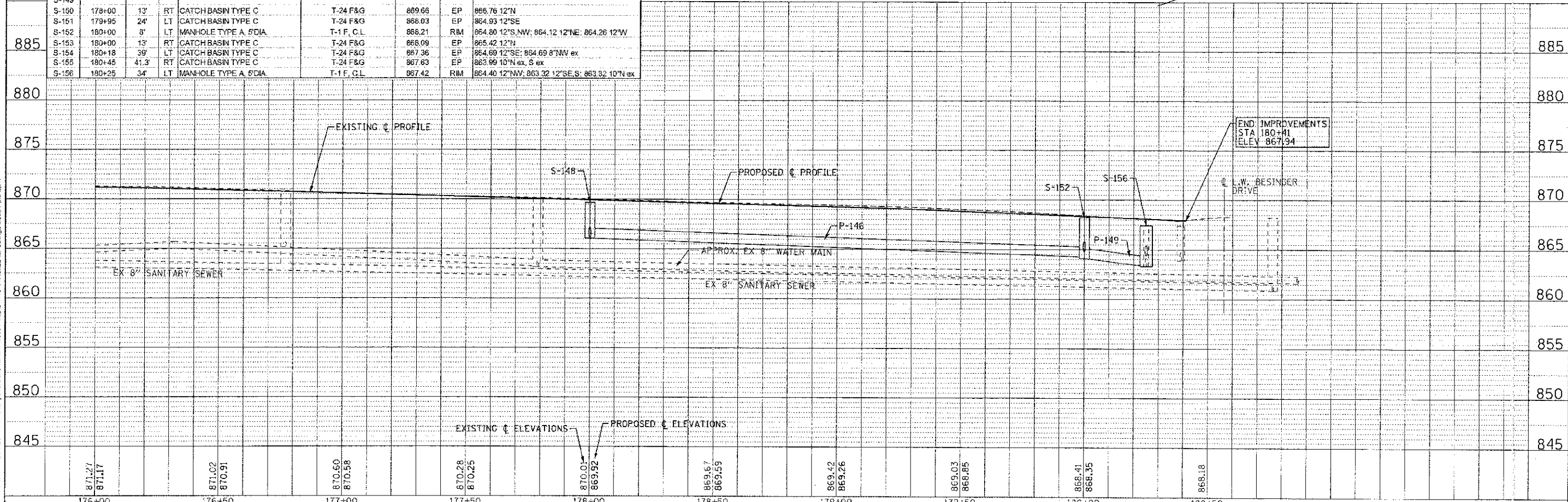


PIPES						
NO.	TYPE	TY	DIA. (IN)	LENGTH (FT)	SLOPE	TBF (CY)
P-145	STORM SEWERS, CLASS A, RUBBER GASKET	1	12	27	2.22%	7
P-146	STORM SEWERS, CLASS A, RUBBER GASKET	1	12	200	0.90%	64
P-147	STORM SEWERS, CLASS A, RUBBER GASKET	1	12	19	0.75%	5
P-148	STORM SEWERS, CLASS A, RUBBER GASKET	1	12	22	2.84%	6
P-149	STORM SEWERS (WATER MAIN REQUIREMENTS)	2	12	36	2.21%	14
P-150	STORM SEWERS (WATER MAIN REQUIREMENTS)	1	12	9	3.26%	2
P-151	STORM SEWERS, CLASS A, RUBBER GASKET	1	12	18	0.01%	7



STRUCTURES							
LABEL	STATION	OFFSET (FT)	TYPE	FRAME	ELEVATION	RMEP	Elevation (Invert) (ft)
S-148	178+00	13'	LT CATCH BASIN TYPE A, 4'DIA.	T-24 F&G	869.66	EP	866.16 12'S; 866.06 12'E
S-149	178+00	13'	RT CATCH BASIN TYPE C	T-24 F&G	869.66	EP	866.76 12'N
S-150	179+00	13'	RT CATCH BASIN TYPE C	T-24 F&G	868.03	EP	864.93 12'SE
S-151	179+95	24'	LT CATCH BASIN TYPE C	T-24 F&G	868.03	EP	864.93 12'SE
S-152	180+00	8'	LT MANHOLE TYPE A, 5'DIA.	T-1 F, C.L.	868.21	RM	864.80 12'S, NW; 864.12 12'NE; 864.26 12'W
S-153	180+00	13'	RT CATCH BASIN TYPE C	T-24 F&G	868.09	EP	865.42 12'N
S-154	180+18	39'	LT CATCH BASIN TYPE C	T-24 F&G	867.36	EP	864.69 12'SE; 864.69 8'NW ex
S-155	180+45	41.3'	RT CATCH BASIN TYPE C	T-24 F&G	867.63	EP	863.99 10'N ex, S ex
S-156	180+25	34'	LT MANHOLE TYPE A, 5'DIA.	T-1 F, C.L.	867.42	RM	864.40 12'NW; 863.32 12'SE, S; 863.32 10'N ex

MAPLE AVENUE



CONTRACT NO. 4006-00049-00-PV
 STATE OF ILLINOIS
 DEPARTMENT OF TRANSPORTATION
 PROJECT NO. 110994-DU14-SHT
 DATE: 06/20/12
 FILE: 110994-DU14.sht

	DESIGNED - AMM	REVISED - PER IDOT 10/19/12	STATE OF ILLINOIS DEPARTMENT OF TRANSPORTATION	DRAINAGE AND UTILITY MAPLE AVENUE	F.A. RTE.	SECTION	COUNTY	TOTAL SHEETS	SHEET NO.
	DRAWN - UKB	REVISIONS			4006	95-00049-00-PV	KANE	136	54
CHECKED - RWL	REVISIONS				CONTRACT NO. 63745				
DATE - 06/20/12	FILE - 110994-DU14.sht				SCALE: H: 1"=20' V: 1"=5'				