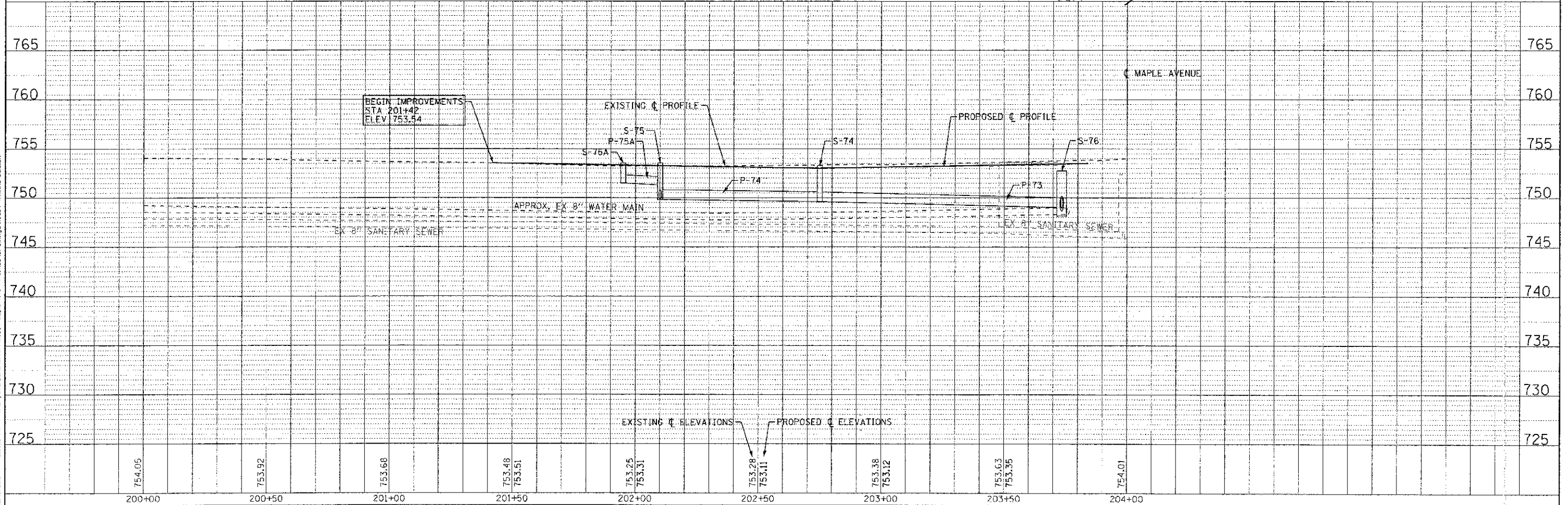
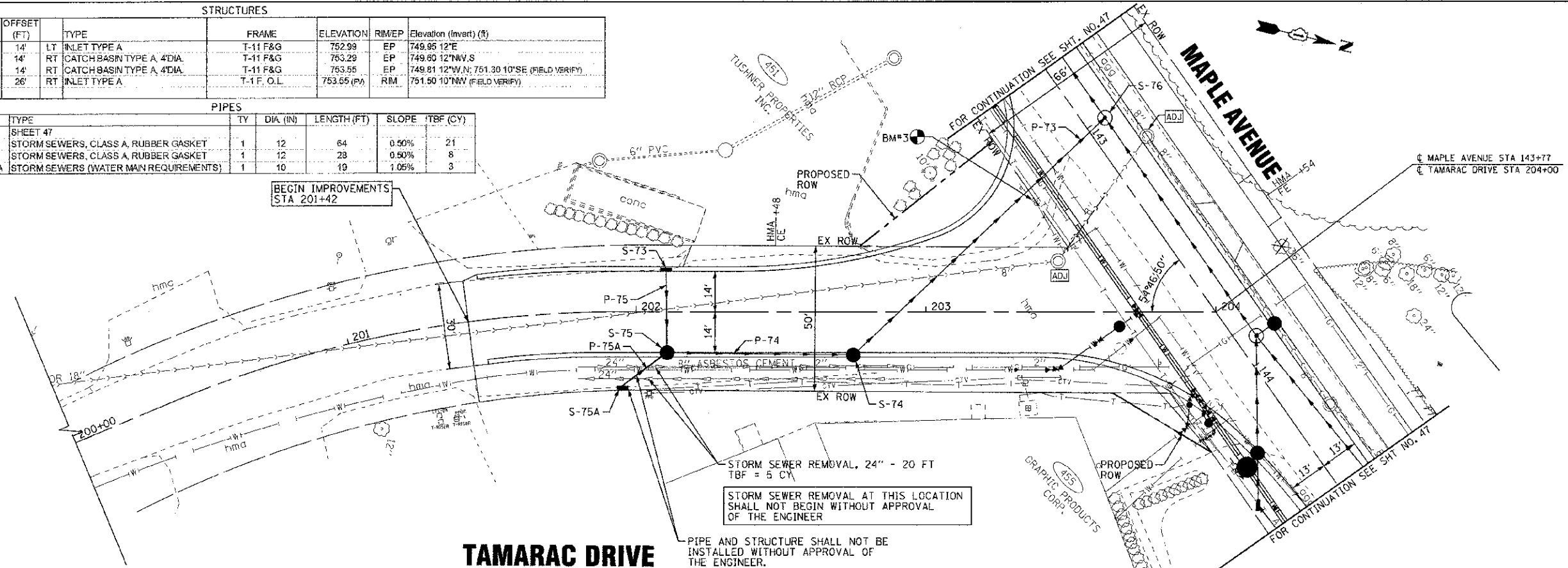


STRUCTURES							
LABEL	STATION	OFFSET (FT)	TYPE	FRAME	ELEVATION	RM/EP	Elevation (invert) (ft)
S-73	202+10	14'	LT INLET TYPE A	T-11 F&G	752.99	EP	749.95 12"E
S-74	202+75	14'	RT CATCH BASIN TYPE A, 4'DIA.	T-11 F&G	753.29	EP	749.80 12"NW,S
S-75	202+10	14'	RT CATCH BASIN TYPE A, 4'DIA.	T-11 F&G	753.55	EP	749.81 12"W,N; 751.30 10"SE (FIELD VERIFY)
S-75A	201+95	26'	RT INLET TYPE A	T-1 F.O.L	753.65 (PA)	RM	751.50 10"NW (FIELD VERIFY)
S-76	SHEET 47						

PIPES						
NO.	TYPE	TY	DIA. (IN)	LENGTH (FT)	SLOPE	TBF (CY)
P-73	SHEET 47					
P-74	STORM SEWERS, CLASS A, RUBBER GASKET	1	12	64	0.50%	21
P-75	STORM SEWERS, CLASS A, RUBBER GASKET	1	12	28	0.50%	8
P-75A	STORM SEWERS (WATER MAIN REQUIREMENTS)	1	10	19	1.05%	3



CONSULT: P. 2012 BY: NUTTER, J. WOODMAN, INC. STATE OF ILL. LICENSE NO. 001271 - EXP. 5/31/2013
 DRAWN: JKB
 CHECKED: RWL
 DATE: 06/20/12
 FILE: IIC994-TAMRAC-DU15.SH1



DESIGNED - AMM	REVISED - PER DOT 10/19/12
DRAWN - JKB	REVISED -
CHECKED - RWL	REVISED -
DATE - 06/20/12	FILE - IIC994-TAMRAC-DU15.SH1

STATE OF ILLINOIS
DEPARTMENT OF TRANSPORTATION

DRAINAGE AND UTILITY
TAMARAC DRIVE

SCALE: H: 1"=20' V: 1"=5'
 STA. 200+00 TO STA. 204+00

F.A. RTE. 4006	SECTION 95-00049-00-PV	COUNTY KANE	TOTAL SHEETS 138	SHEET NO. 55
FED. ROAD DIST. NO. : ILLINOIS FED. AID PROJECT # 8003 0095			CONTRACT NO. 63745	