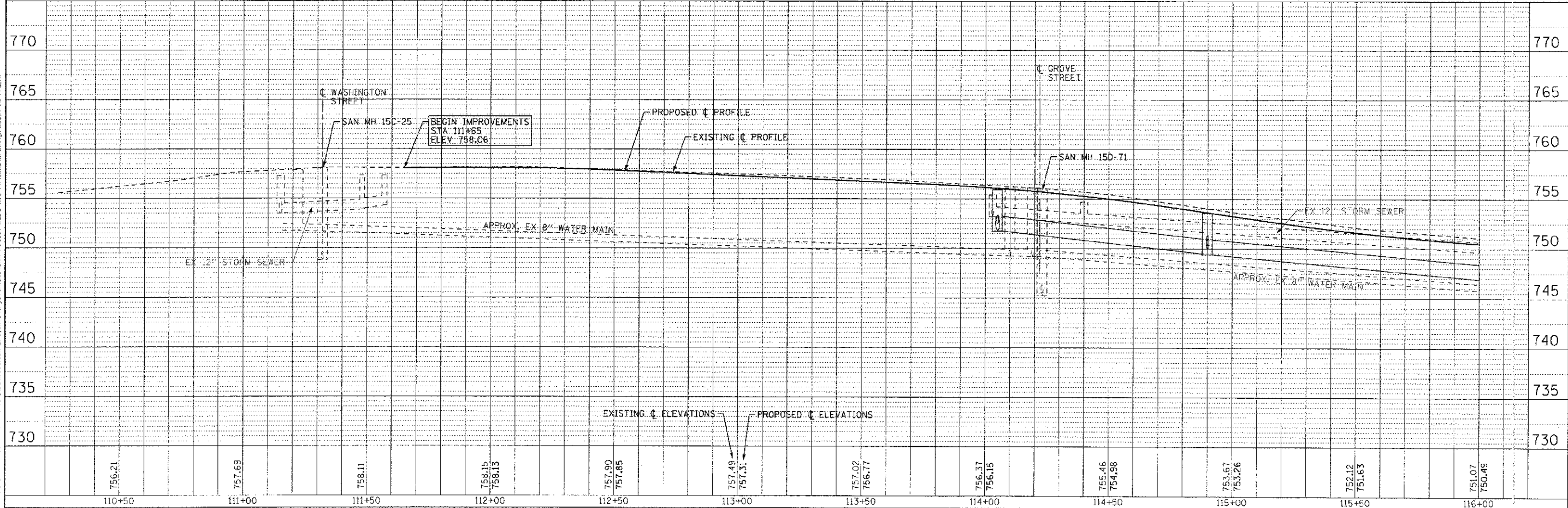


| WATER MAIN APPURTENANCES | | | |
|--------------------------|----------|--------|---|
| NO | STATION | OFFSET | DESCRIPTION |
| WM-FHW1 | 114+82.5 | 19' RT | FIRE HYDRANT WITH AUXILIARY VALVE AND BOX |



| | | | | | | | | | | | |
|--------|--------|--------|------------------|------------------|------------------|------------------|------------------|------------------|------------------|------------------|------------------|
| 110+50 | 111+00 | 111+50 | 112+00 | 112+50 | 113+00 | 113+50 | 114+00 | 114+50 | 115+00 | 115+50 | 116+00 |
| 756.21 | 757.69 | 758.11 | 758.15 758.13 | 757.90 757.85 | 757.49 757.31 | 757.02 756.77 | 756.37 756.15 | 755.46 754.98 | 753.67 753.26 | 752.12 751.63 | 751.07 750.49 |

| | | | |
|----------|------------|---------|---------------------|
| DESIGNED | AMM/SMV | REVISED | - PER IDOT 10/19/12 |
| DRAWN | - UKB | REVISED | - |
| CHECKED | - RWL | REVISED | - |
| DATE | - 06/20/12 | FILE | - 110994-WM-PP1.sh1 |

STATE OF ILLINOIS
DEPARTMENT OF TRANSPORTATION

WATER MAIN AND SANITARY SEWER
MAPLE AVENUE

SCALE: H: 1"=20' V: 1"=5'

STA. 110+50 TO STA. 116+00

| | | | | |
|--|----------------|--------|--------------------|-----------|
| F.A. RTE. | SECTION | COUNTY | TOTAL SHEETS | SHEET NO. |
| 4006 | 95-00049-00-PV | KANE | 136 | 58 |
| FED. ROAD DIST. NO. 1 ILLINOIS FED. AID PROJECT N-8003 (095) | | | CONTRACT NO. 63745 | |

COPYRIGHT © 2012 BY HASKIN & NEWMAN, INC.
 STATE OF ILLINOIS - PROFESSIONAL DESIGN FIRM
 2020 N. WASHINGTON STREET, SUITE 200, CHICAGO, IL 60610
 TEL: (312) 462-1100 FAX: (312) 462-1101
 WWW.HASKIN-NEWMAN.COM