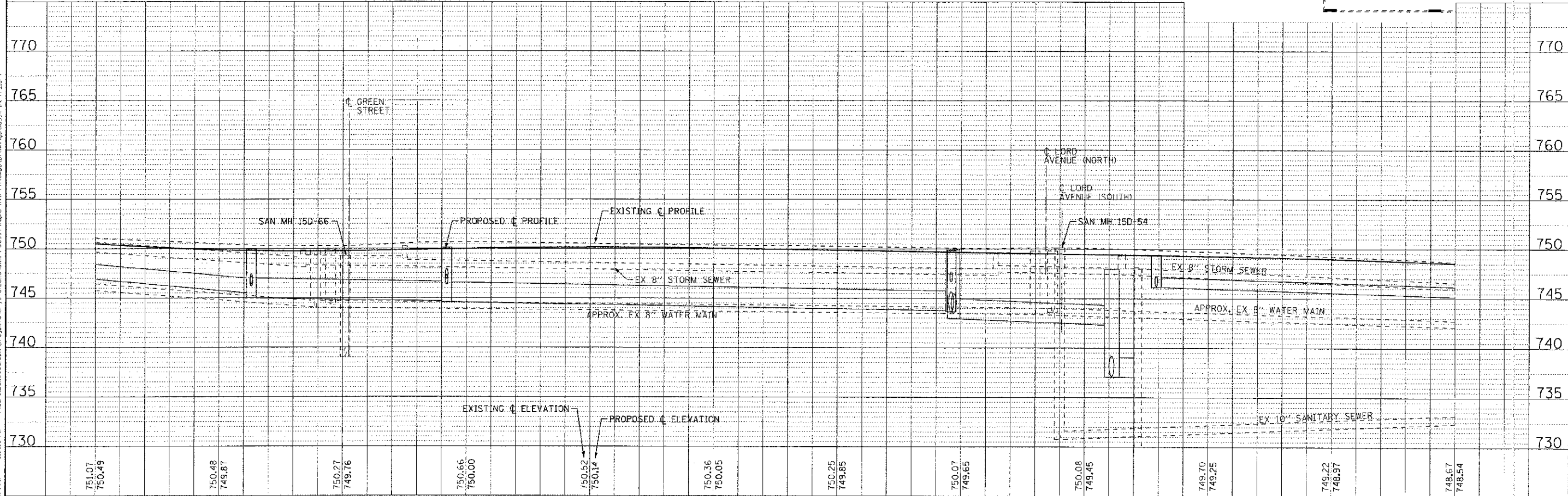
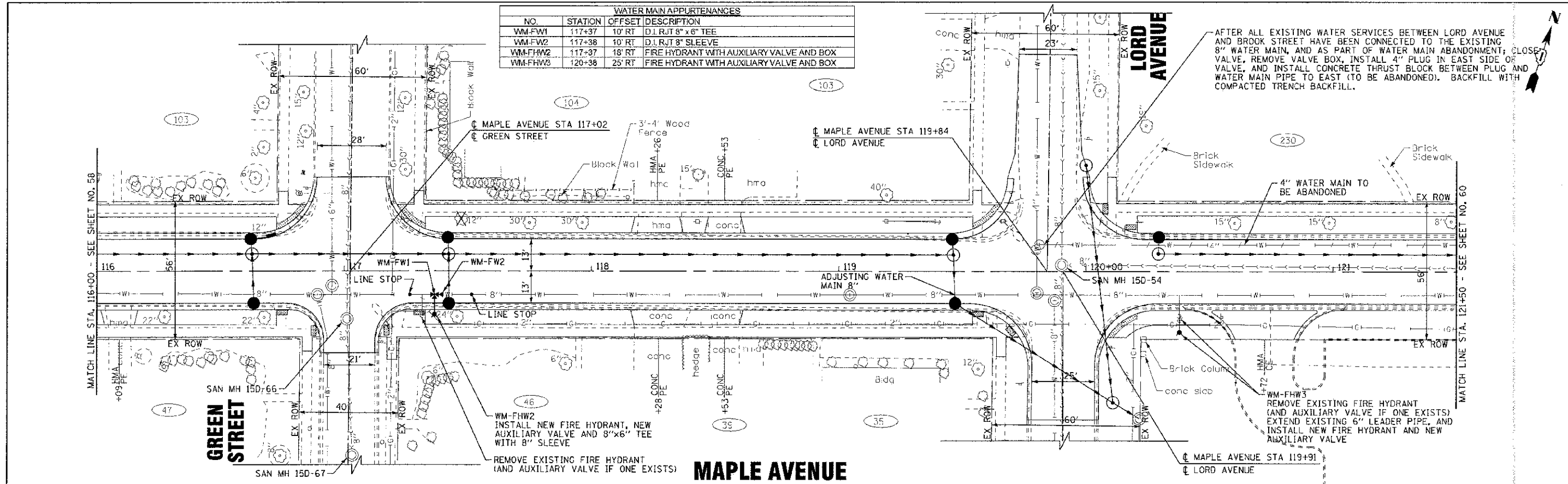


WATER MAIN APPURTENANCES			
NO.	STATION	OFFSET	DESCRIPTION
WM-FW1	117+37	10' RT	D.I. RJT 8" x 6" TEE
WM-FW2	117+38	10' RT	D.I. RJT 8" SLEEVE
WM-FHW2	117+37	18' RT	FIRE HYDRANT WITH AUXILIARY VALVE AND BOX
WM-FHW3	120+38	25' RT	FIRE HYDRANT WITH AUXILIARY VALVE AND BOX



Copyright © 2012 by BAXTER WOODMAN, INC. ALL RIGHTS RESERVED. THIS DRAWING IS THE PROPERTY OF BAXTER WOODMAN, INC. AND IS NOT TO BE REPRODUCED OR TRANSMITTED IN ANY FORM OR BY ANY MEANS, ELECTRONIC OR MECHANICAL, INCLUDING PHOTOCOPYING, RECORDING, OR BY ANY INFORMATION STORAGE AND RETRIEVAL SYSTEM. WITHOUT THE WRITTEN PERMISSION OF BAXTER WOODMAN, INC.

DESIGNED - AMM/SMV	REVISED - PER IDOT 10/19/12
DRAWN - UK3	REVISED -
CHECKED - RWL	REVISED -
DATE - 06/20/12	FILE - 110994-WM-PP2.sht

**STATE OF ILLINOIS**  
**DEPARTMENT OF TRANSPORTATION**

**WATER MAIN AND SANITARY SEWER**  
**MAPLE AVENUE**

SCALE: H: 1"=20' V: 1"=5'  
 STA. 116+00 TO STA. 121+50

F.A. RTE. 4006	SECTION 95-00049-00-PV	COUNTY KANE	TOTAL SHEETS 138
CONTRACT NO. 63745			SHEET NO. 59