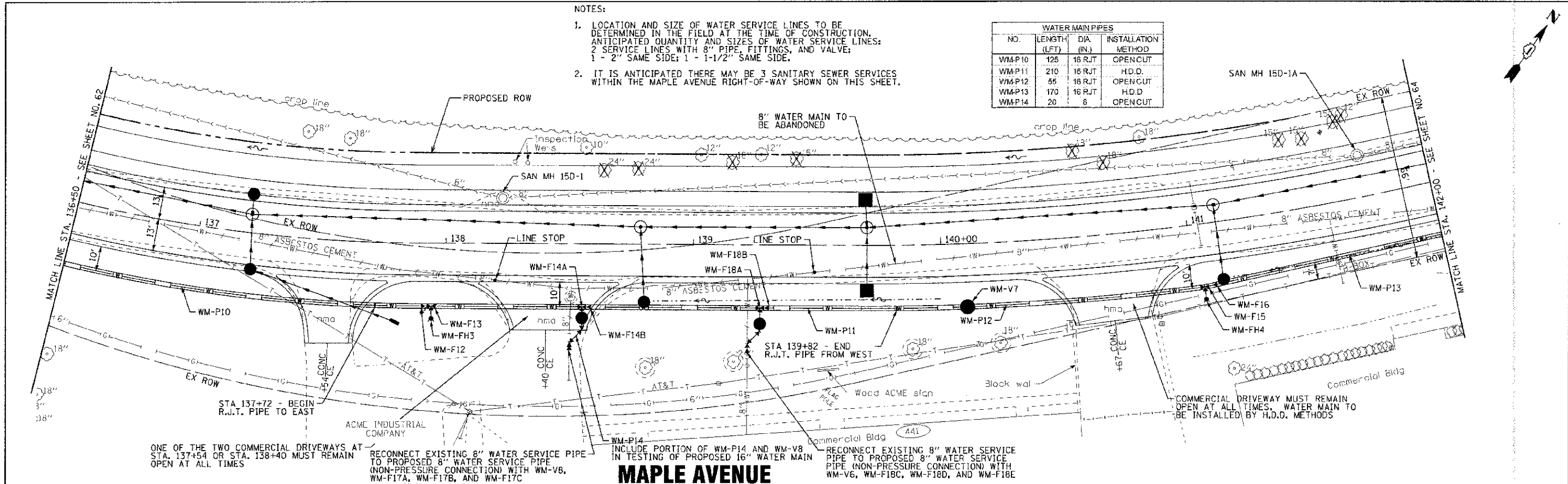


NOTES:

1. LOCATION AND SIZE OF WATER SERVICE LINES TO BE DETERMINED IN THE FIELD AT THE TIME OF CONSTRUCTION. ANTICIPATED QUANTITY AND SIZE OF WATER SERVICE LINES: 2 SERVICE LINES WITH 8" PIPE, FITTINGS, AND VALVE; 1 - 2" SAME SIDE; 1 - 1-1/2" SAME SIDE.
2. IT IS ANTICIPATED THERE MAY BE 3 SANITARY SEWER SERVICES WITHIN THE MAPLE AVENUE RIGHT-OF-WAY SHOWN ON THIS SHEET.

WATER MAIN PIPES			
NO.	LENGTH (LFT)	DIA (IN.)	INSTALLATION METHOD
WM-P10	125	16 RJT	OPENCUT
WM-P11	210	16 RJT	H.D.D.
WM-P12	55	16 RJT	OPENCUT
WM-P13	170	16 RJT	H.D.D.
WM-P14	20	8	OPENCUT



ONE OF THE TWO COMMERCIAL DRIVEWAYS AT STA. 137+54 OR STA. 138+40 MUST REMAIN OPEN AT ALL TIMES

RECONNECT EXISTING 8" WATER SERVICE PIPE TO PROPOSED 8" WATER SERVICE PIPE (NON-PRESSURE CONNECTION) WITH WM-V8, WM-F17A, WM-F17B, AND WM-F17C

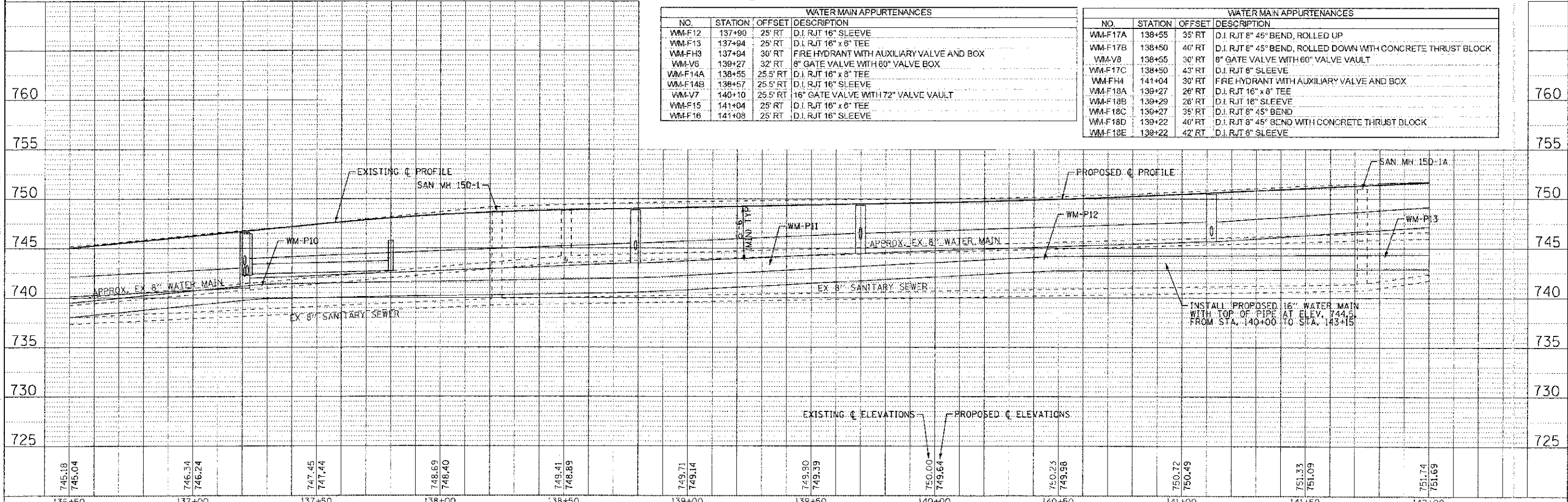
INCLUDE PORTION OF WM-P14 AND WM-V8 IN TESTING OF PROPOSED 16" WATER MAIN

RECONNECT EXISTING 8" WATER SERVICE PIPE TO PROPOSED 8" WATER SERVICE PIPE (NON-PRESSURE CONNECTION) WITH WM-V6, WM-F18C, WM-F18D, AND WM-F18E

MAPLE AVENUE

WATER MAIN APPURTENANCES			
NO.	STATION	OFFSET	DESCRIPTION
WM-F12	137+90	25' RT	D.I. RJT 16" SLEEVE
WM-F13	137+94	25' RT	D.I. RJT 16" x 8" TEE
WM-FH3	137+94	30' RT	FIRE HYDRANT WITH AUXILIARY VALVE AND BOX
WM-V6	139+27	32' RT	8" GATE VALVE WITH 60" VALVE BOX
WM-F14A	138+55	25.5' RT	D.I. RJT 16" x 8" TEE
WM-F14B	138+57	25.5' RT	D.I. RJT 16" SLEEVE
WM-V7	140+10	25.5' RT	16" GATE VALVE WITH 72" VALVE VAULT
WM-F15	141+04	25' RT	D.I. RJT 16" x 8" TEE
WM-F16	141+08	25' RT	D.I. RJT 16" SLEEVE

WATER MAIN APPURTENANCES			
NO.	STATION	OFFSET	DESCRIPTION
WM-F17A	138+55	35' RT	D.I. RJT 8" 45° BEND, ROLLED UP
WM-F17B	138+50	40' RT	D.I. RJT 8" 45° BEND, ROLLED DOWN WITH CONCRETE THRUST BLOCK
WM-V8	138+55	30' RT	8" GATE VALVE WITH 60" VALVE VAULT
WM-F17C	138+50	43' RT	D.I. RJT 8" SLEEVE
WM-FH4	141+04	30' RT	FIRE HYDRANT WITH AUXILIARY VALVE AND BOX
WM-F18A	139+27	26' RT	D.I. RJT 16" x 8" TEE
WM-F18B	139+29	26' RT	D.I. RJT 16" SLEEVE
WM-F18C	139+27	35' RT	D.I. RJT 8" 45° BEND
WM-F18D	139+22	40' RT	D.I. RJT 8" 45° BEND WITH CONCRETE THRUST BLOCK
WM-F18E	139+22	42' RT	D.I. RJT 8" SLEEVE



	DESIGNED - SMV	REVISED - PER IDOT 10/19/12	STATE OF ILLINOIS DEPARTMENT OF TRANSPORTATION	WATER MAIN AND SANITARY SEWER MAPLE AVENUE		F.A. RTE.	SECTION	COUNTY	TOTAL SHEETS	SHEET NO.
	DRAWN - UKB	REVISED -				40CE	95-00049-00-PV	KANE	138	63
	CHECKED - RWL	REVISED -				CONTRACT NO. 63745				
	DATE - 06/20/12	FILE - 110994-WM-PP6.SHT				FED. ROAD DIST. NO. 1 (ILLINOIS) FED. AID PROJECT W-8003 (095)				

COPYRIGHT © 2012 BY EASTMAN & WOODMAN, INC.
 STATE OF ILLINOIS - PROFESSIONAL ENGINEERING FIRM
 LICENSE NO. BR-000227 - EXPIRES 12/31/2013
 2000 N. WOODMAN AVENUE, SUITE 100, DEERFIELD, IL 60015
 TEL: 847.938.1000 FAX: 847.938.1001