

WATER MAIN PIPES			
NO.	LENGTH (LF)	DIA (IN)	INSTALLATION METHOD
WM-P46	7	8 RJT	OPEN CUT
WM-P47	295	16 RJT	H.D.D.
WM-P48	50	16 RJT	OPEN CUT
WM-P49	105	16 RJT	H.D.D.
WM-P50	87	8 RJT	OPEN CUT

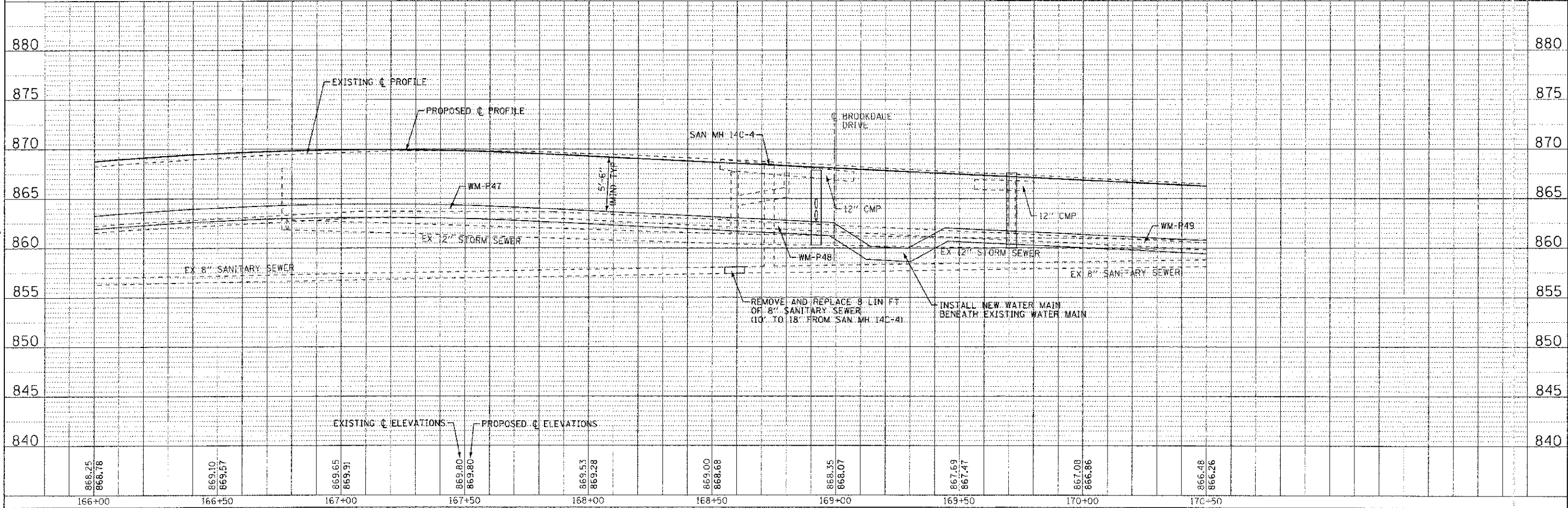
WATER MAIN APPURTENANCES			
NO.	STATION	OFFSET	DESCRIPTION
WM-F73A	169+13	50' LT	D.I. RJT 8" x 6" TEE
WM-F73B	169+13	58' LT	D.I. RJT 8" 45° BEND
WM-F73C	169+39	71' LT	D.I. RJT 45° BEND WITH CONCRETE THRUST BLOCK
WM-F74	169+13	6.5' RT	D.I. RJT 16" X 8" TEE
WM-V25			NOT USED
WM-FH15	169+25	50' LT	FIRE HYDRANT WITH AUXILIARY VALVE AND VALVE BOX
WM-V26	169+41	6.5' RT	16" GATE VALVE WITH 72" VALVE VAULT
WM-F75	169+48	6.5' RT	D.I. RJT 16" SLEEVE
WM-F76A	169+32	73' LT	D.I. RJT 8" X 6" REDUCER
WM-F76B	169+32	78' LT	D.I. RJT 6" SLEEVE
WM-V27	169+24	66' LT	8" GATE VALVE WITH 60" VALVE VAULT

WM-P50 WITH TEMPORARY PLUG AT NORTH END OF NEW 8" WATER MAIN, SEE WATER MAIN GENERAL NOTE NO. 35. CONNECT TO EXISTING 6" WATER MAIN (NON-PRESSURE CONNECTION) AFTER PROPOSED 16" AND 8" WATER MAINS HAVE BEEN ACCEPTED FOR USE BY THE VILLAGE OF CARPENTERSVILLE

NOTES:

- LOCATION AND SIZE OF WATER SERVICE LINES TO BE DETERMINED IN THE FIELD AT THE TIME OF CONSTRUCTION. ANTICIPATED QUANTITY AND SIZES OF WATER SERVICE LINES: 4 - 1" SAME SIDE
- IT IS ANTICIPATED THERE MAY BE 4 SANITARY SEWER SERVICES WITHIN THE MAPLE AVENUE RIGHT-OF-WAY SHOWN ON THIS SHEET.

MAPLE AVENUE



	DESIGNED - SMV	REVISED - PER IDOT 10/19/12	STATE OF ILLINOIS DEPARTMENT OF TRANSPORTATION	WATER MAIN AND SANITARY SEWER		F.A. RTE.	SECTION	COUNTY	TOTAL SHEETS	SHEET NO.
	DRAWN - UKB	REVISED -		4006	95-00043-00-PV	KANE	130	69		
	CHECKED - RWL	REVISED -		MAPLE AVENUE			CONTRACT NO. 63745			
	DATE - 06/20/17	FILE - 110994-WM-PP12.sht		SCALE: H: 1"=20' V: 1"=5' STA. 166+00 TO STA. 170+50		FED. ROAD DIST. NO. 1 (ILLINOIS) FED. AID PROJECT W-8003-10951				

COPYRIGHT © 2017 BY RAXTER A. WOODMAN INC.
 STATE OF ILLINOIS - PROFESSIONAL DESIGN FIRM
 LICENSE NO. - 041-000001-0000-0000-0000-0000
 2/2017