

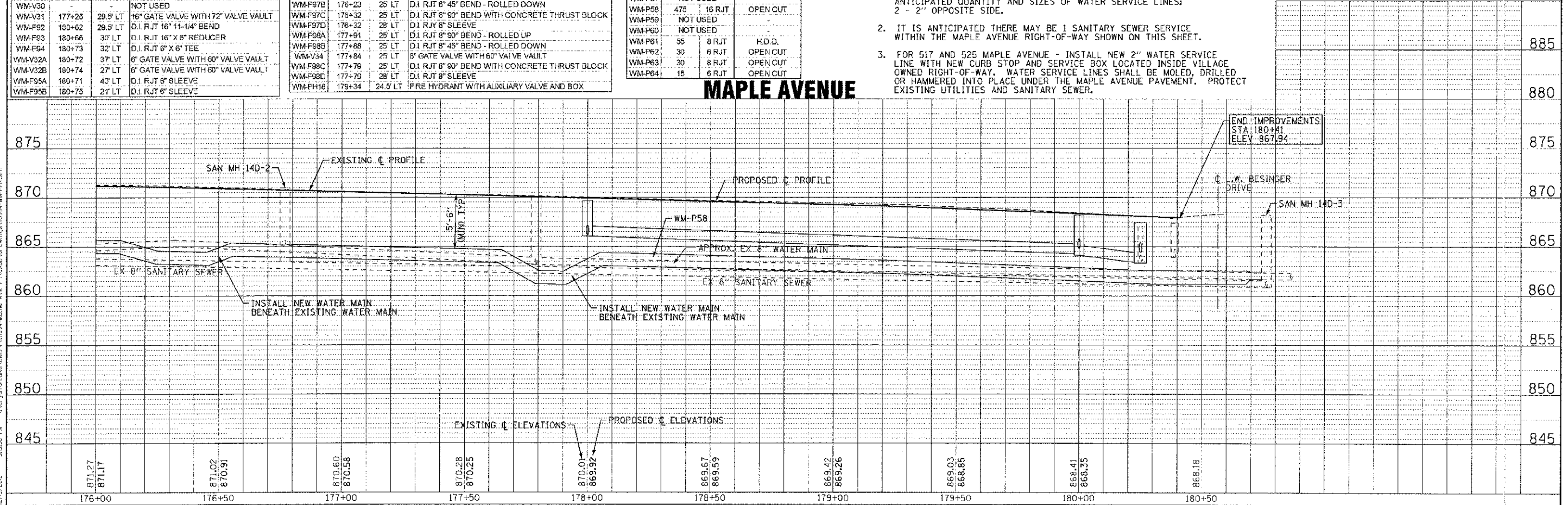
WATER MAIN APPURTENANCES			
NO.	STATION	OFFSET	DESCRIPTION
WM-F86			NOT USED
WM-F87	176+35	29.5 LT	D.I. RJT 16" X 8" TEE
WM-F88	176+41	29.5 LT	D.I. RJT 16" X 8" TEE
WM-F89	177+91	29.5 LT	D.I. RJT 16" X 8" TEE
WM-F90			NOT USED
WM-F91	179+34	29.5 LT	D.I. RJT 16" X 8" TEE
WM-V30			NOT USED
WM-V31	177+25	29.5 LT	16" GATE VALVE WITH 72" VALVE VAULT
WM-F92	180+62	29.5 LT	D.I. RJT 16" X 11-14" BEND
WM-F93	180+66	30" LT	D.I. RJT 16" X 8" REDUCER
WM-F94	180+73	32" LT	D.I. RJT 8" X 6" TEE
WM-V32A	180+72	37" LT	6" GATE VALVE WITH 60" VALVE VAULT
WM-V32B	180+74	27" LT	6" GATE VALVE WITH 60" VALVE VAULT
WM-F95A	180+71	43" LT	D.I. RJT 8" SLEEVE
WM-F95B	180+75	21" LT	D.I. RJT 8" SLEEVE

WATER MAIN APPURTENANCES			
NO.	STATION	OFFSET	DESCRIPTION
WM-F96	176+35	24" RT	D.I. RJT 8" X 6" REDUCER
WM-FH17	176+35	29" RT	FIRE HYDRANT WITH AUXILIARY VALVE AND BOX
WM-V33	176+27	25" LT	6" GATE VALVE WITH 60" VALVE VAULT
WM-F97A	176+20	25" LT	D.I. RJT 8" 90° BEND - ROLLED UP
WM-F97B	176+23	25" LT	D.I. RJT 8" 45° BEND - ROLLED DOWN
WM-F97C	176+32	25" LT	D.I. RJT 8" 90° BEND WITH CONCRETE THRUST BLOCK
WM-F97D	176+32	28" LT	D.I. RJT 8" SLEEVE
WM-F98A	177+91	25" LT	D.I. RJT 8" 90° BEND - ROLLED UP
WM-F98B	177+88	25" LT	D.I. RJT 8" 45° BEND - ROLLED DOWN
WM-V34	177+84	25" LT	8" GATE VALVE WITH 60" VALVE VAULT
WM-F98C	177+79	25" LT	D.I. RJT 8" 90° BEND WITH CONCRETE THRUST BLOCK
WM-F98D	177+79	28" LT	D.I. RJT 8" SLEEVE
WM-FH18	179+34	24.5" LT	FIRE HYDRANT WITH AUXILIARY VALVE AND BOX

WATER MAIN PIPES			
NO.	LENGTH (LFT)	DIA (IN.)	INSTALLATION METHOD
WM-P57	NOT USED		
WM-P58	475	16 RJT	OPEN CUT
WM-P59	NOT USED		
WM-P60	NOT USED		
WM-P61	55	8 RJT	H.D.D.
WM-P62	30	8 RJT	OPEN CUT
WM-P63	30	8 RJT	OPEN CUT
WM-P64	15	6 RJT	OPEN CUT

- NOTES:
- LOCATION AND SIZE OF WATER SERVICE LINES TO BE DETERMINED IN THE FIELD AT THE TIME OF CONSTRUCTION. ANTICIPATED QUANTITY AND SIZES OF WATER SERVICE LINES: 2 - 2" OPPOSITE SIDE.
 - IT IS ANTICIPATED THERE MAY BE 1 SANITARY SEWER SERVICE WITHIN THE MAPLE AVENUE RIGHT-OF-WAY SHOWN ON THIS SHEET.
 - FOR 517 AND 525 MAPLE AVENUE - INSTALL NEW 2" WATER SERVICE LINE WITH NEW CURB STOP AND SERVICE BOX LOCATED INSIDE VILLAGE OWNED RIGHT-OF-WAY. WATER SERVICE LINES SHALL BE MOLED, DRILLED OR HAMMERED INTO PLACE UNDER THE MAPLE AVENUE PAVEMENT. PROTECT EXISTING UTILITIES AND SANITARY SEWER.

AT LEAST ONE LANE OF TRAFFIC ALONG L.E. BESINGER DRIVE MUST REMAIN OPEN AT ALL TIMES. PROVIDE TEMPORARY ADDITIONAL PAVEMENT AS REQUIRED.



DESIGNED - SMV	REVISED - PER IDOT 10/19/12
DRAWN - UKP	REVISED
CHECKED - RWL	REVISED
DATE - 06/20/12	FILE - 110994-WM-PP14.sht

STATE OF ILLINOIS
DEPARTMENT OF TRANSPORTATION

WATER MAIN AND SANITARY SEWER
MAPLE AVENUE

SCALE: H: 1"=20' V: 1"=5'
S/A. 176+00 TO STA. 180+50

F.A. R.T.E.	SECTION	COUNTY	TOTAL SHEETS	SHEET NO.
4006	95-00049-00-PV	KANE	139	71
CONTRACT NO. 63745				
FED. ROAD DIST. NO. 1 (ILLINOIS) FED. AID PROJECT W 6003 (095)				

CONTRACT NO. 63745, PROJECT W 6003 (095)
 SCALE: H: 1"=20' V: 1"=5'
 DATE: 06/20/12
 FILE: 110994-WM-PP14.sht
 DRAWN: UKP
 CHECKED: RWL
 DESIGNED: SMV
 PROJECT: W 6003 (095)
 SHEET: 71 OF 139
 COUNTY: KANE
 SECTION: 95-00049-00-PV
 F.A. R.T.E.: 4006