

ROUTE MARKERS

FOR U.S. ROUTES
M1-40-2424

FOR ILLINOIS ROUTES
M1-50-2474

R.R. UNMARKED ROUTES
SPECIAL 24" x 18" VARIABLE
4" BLACK LETTERS ON WHITE
REFLECTIVE BACKGROUND

ARROWS SIGNS

V5-1L-2115

M5-1R-2115

M6-1-2115

M6-1-2115

V6-3-2115

CARDINAL DIRECTION & DETOUR SIGNS

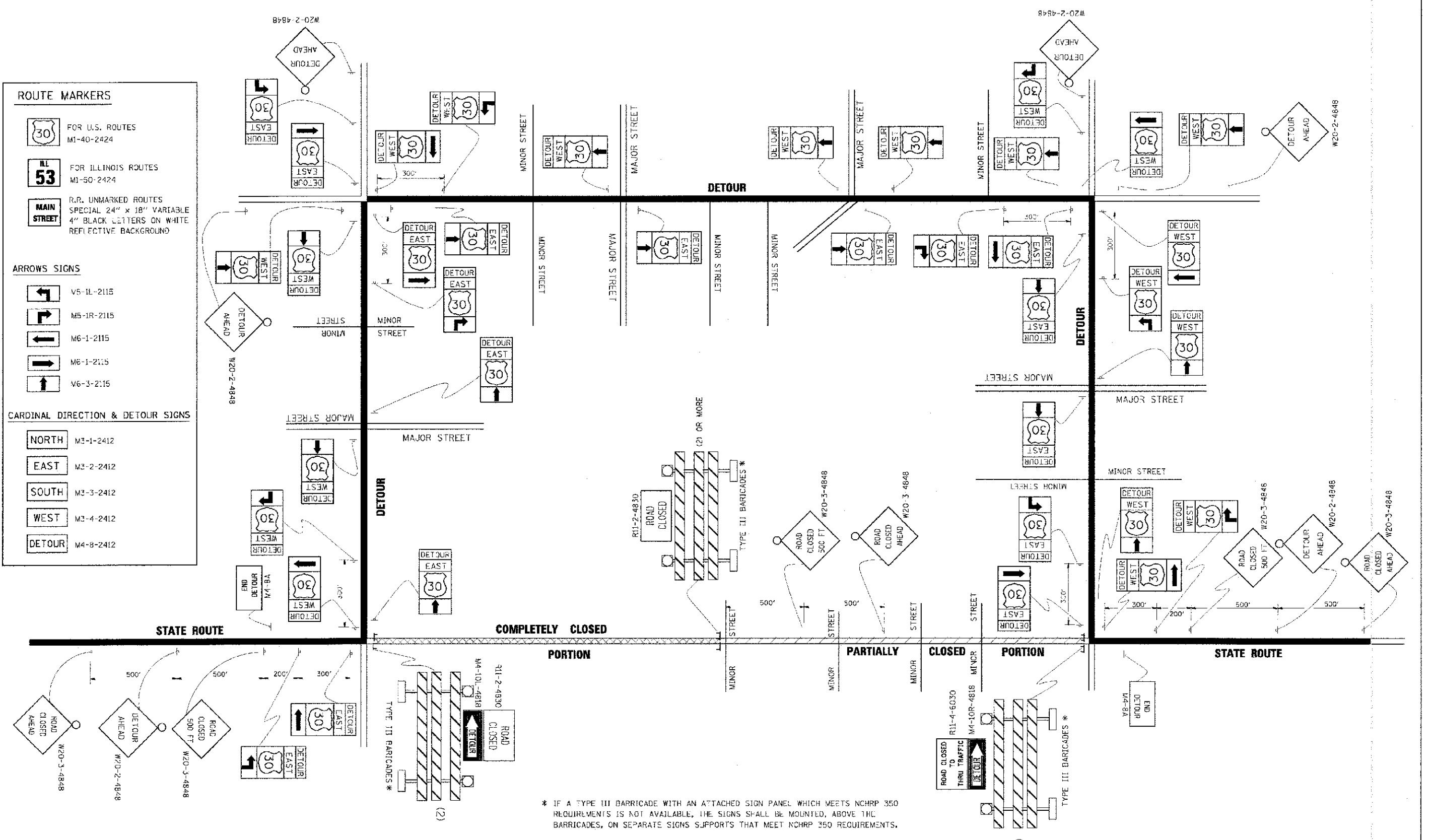
NORTH M3-1-2412

EAST M3-2-2412

SOUTH M3-3-2412

WEST M3-4-2412

DETOUR M4-8-2412



* IF A TYPE III BARRICADE WITH AN ATTACHED SIGN PANEL WHICH MEETS NCHRP 350 REQUIREMENTS IS NOT AVAILABLE, THE SIGNS SHALL BE MOUNTED, ABOVE THE BARRICADES, ON SEPARATE SIGNS SUPPORTS THAT MEET NCHRP 350 REQUIREMENTS.

COPYRIGHT © 2011 BY HATLER & WOODMAN, INC.
 S.A.E. BY: J.L. HIGGS - PROFESSIONAL DESIGN FIRM
 LICENSE NO. 184-00121 - EXPIRES 4/30/2013
 230 S. W. 11th St., Okla. City, OK 73102-2200
 405-233-8800
 11/15/10 10:54 AM

DESIGNED -	REVISIONS -	STATE OF ILLINOIS DEPARTMENT OF TRANSPORTATION		DETOUR SIGNING FOR CLOSING STATE HIGHWAYS		SECTION	COUNTY	TOTAL SHEETS	SHEET NO.
DRAWN -	REVISIONS -			4006	95-00049-00-PV	138	105		
CHECKED -	REVISIONS -			SCALE: NONE SHEET NO. 1 OF 1 SHEETS STA. TO STA.		TC-21 CONTRACT NO. 63745			
DATE	REVISIONS -					FED. ROAD DIST. NO. 1 ILLINOIS FED. AID PROJECT M-80033 (095)			