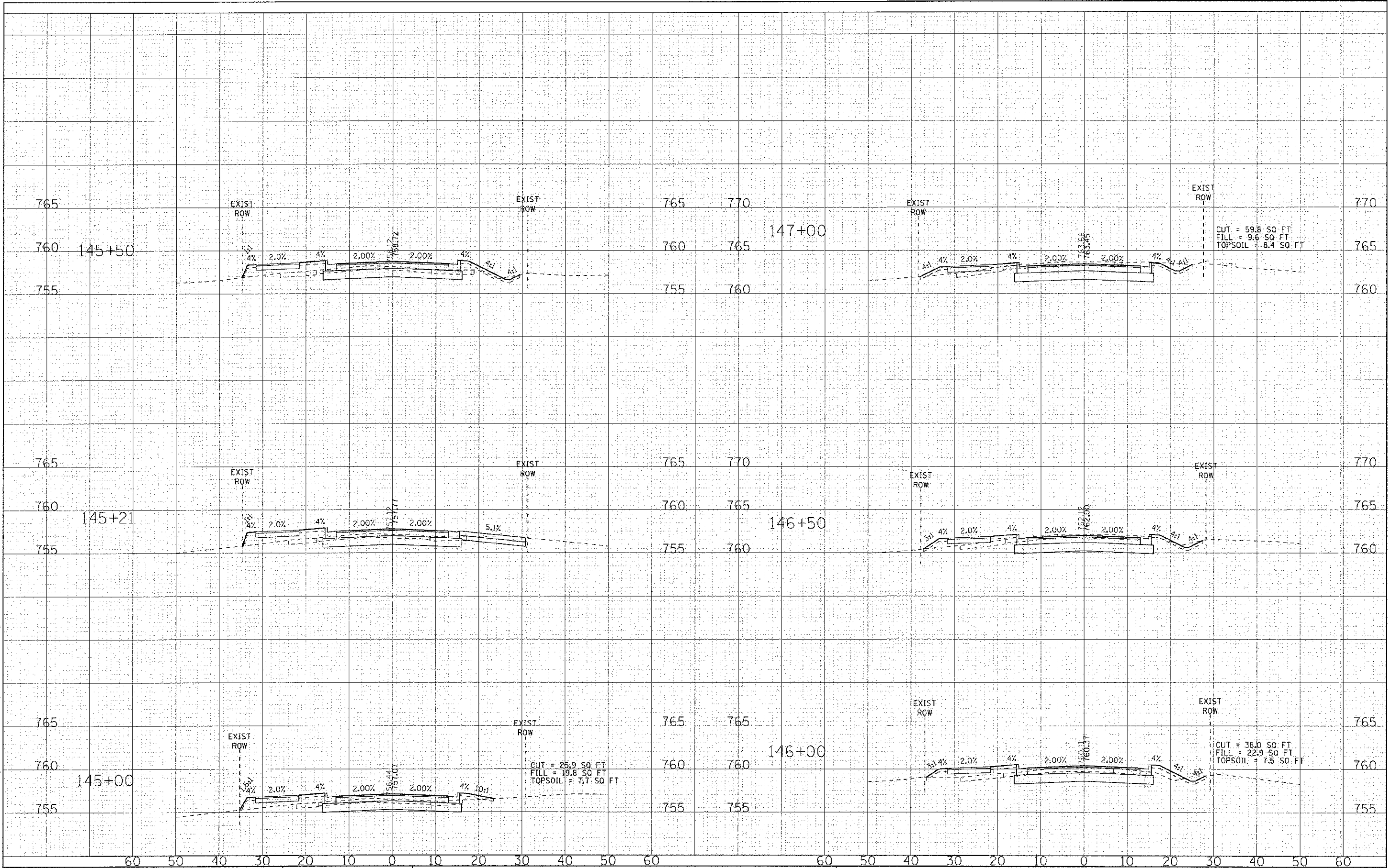


COPYRIGHT © 2004 BY BATES & BOGGS, INC.
 STATE OF ILLINOIS - PROFESSIONAL DESIGN FIRM
 LICENSE NO. 081-00017 - EXP. 04/30/2013
 2500 S. W. 127th AVENUE
 BOSTON, ILLINOIS 60015-1270



DESIGNED -	DJS	REVISED -	
DRAWN -	UKB	REVISED -	
CHECKED -	RWL	REVISED -	
DATE -	04/20/12	REVISED -	

**STATE OF ILLINOIS
DEPARTMENT OF TRANSPORTATION**

SCALE: H: 1"=10' V: 1"=5'

**CROSS SECTIONS
MAPLE AVENUE**

STA. 145+00 TO STA. 147+00

F.A.U. RTE.	SECTION	COUNTY	TOTAL SHEETS	SHEET NO.
4006	95-00049-00-PV	KANE	138	121
FED. ROAD DIST. NO.			ILLINOIS FED. AID PROJECT M-8063 (095)	
CONTRACT NO. 63745				