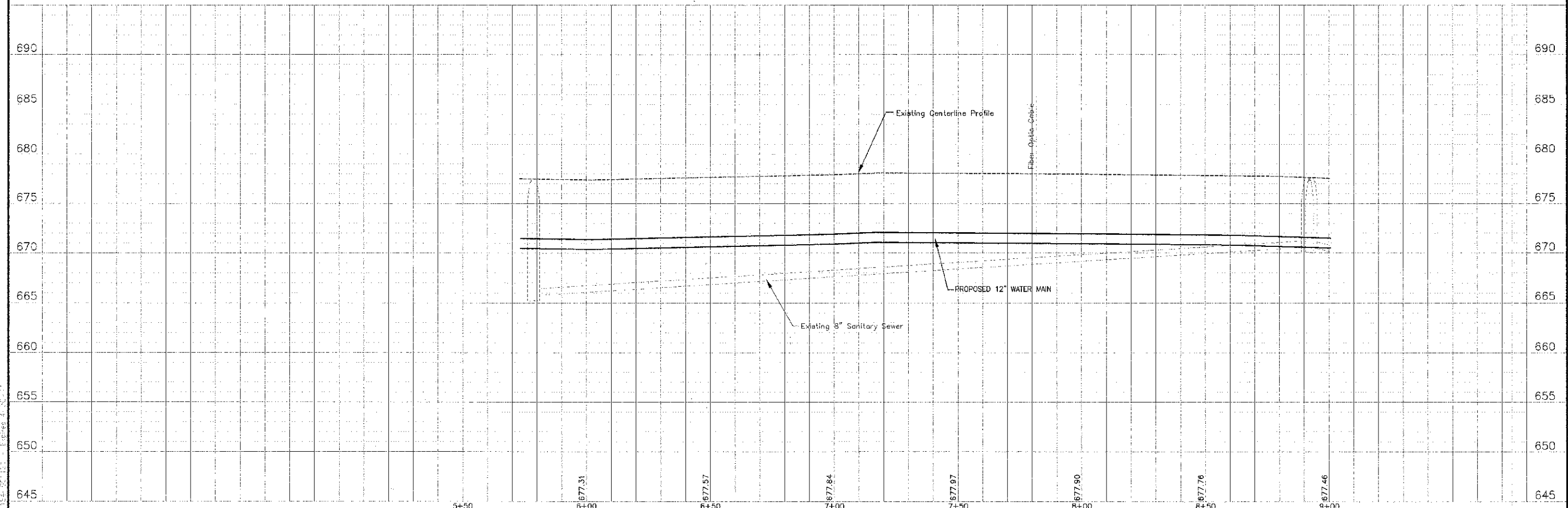
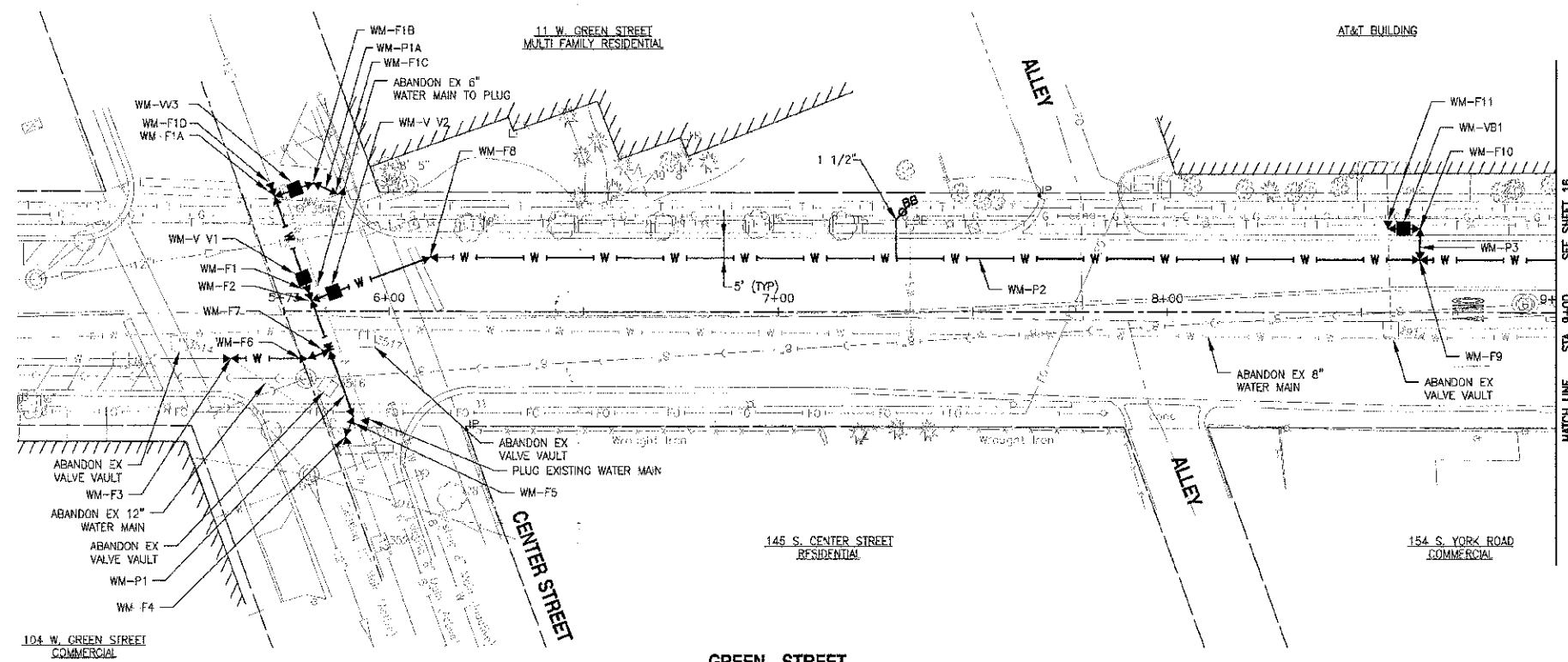


WATER MAIN FITTINGS		
NO.	STATION	DESCRIPTION
WM-F1	5+71	12" D.I. SOLID SLEEVE (NON-PRESSURE CONNECTION)
WM-F1A	5+71	12" X 6" D.I. TEE
WM-F1B	5+81	6" D.I. 45° BEND
WM-F1C	5+87	6" D.I. 45° BEND (NON-PRESSURE CONNECTION)
WM-F1D	5+71	12" D.I. SOLID SLEEVE (NON-PRESSURE CONNECTION)
WM-F2	5+80	12" X 12" D.I. TEE
WM-F3	5+89	12" D.I. SOLID SLEEVE (NON-PRESSURE CONNECTION)
WM-F4	5+89	12" D.I. 45° BEND (NON-PRESSURE CONNECTION)
WM-F5	5+91	12" D.I. 45° BEND
WM-F6	5+79	12" D.I. 22-1/2° BEND
WM-F7	5+85	12" X 12" D.I. TEE
WM-F8	6+10	12" D.I. 45° BEND
WM-F9	8+85	12" X 6" D.I. TEE
WM-F10	8+85	6" D.I. 90° BEND
WM-F11	8+57	6" D.I. 90° BEND (NON-PRESSURE CONNECTION)

VALVE VAULTS		
NO.	STATION	DESCRIPTION
WM-VV1	5+78	12" INSERTION VALVE W/S' DIAMETER VALVE VAULT
WM-VV2	5+85	12" D.I. GATE VALVE W/S' DIAMETER VALVE VAULT
WM-VV3	5+78	6" D.I. GATE VALVE W/S' DIAMETER VALVE VAULT

VALVE BOXES		
NO.	STATION	DESCRIPTION
WM-VB-1	8+81	6" D.I. GATE VALVE W/VALVE BOX

WATER MAIN PIPES		
NO.	LENGTH	DESCRIPTION
WM-P1	95 LF	12" D.I. RJT
WM-P1A	18 LF	6" D.I. RJT
WM-P2	322 LF	12" D.I. RJT
WM-P3	12 LF	6" D.I. RJT



CONSULTING ENGINEERS  
 12714/12717, 934 4th St., 21116B  
 Chicago, IL 60640  
 State of Illinois - Professional Design Firm  
 No. 154-05-151 - Expires 4-30-17

	DESIGNED - ALP	REVISED - LDI 12-12-12	STATE OF ILLINOIS DEPARTMENT OF TRANSPORTATION	<b>WATER MAIN REPLACEMENT PLAN AND PROFILE</b> <b>GREEN STREET</b>		SECTION COUNTY TOTAL SHEETS: 16 SHEET NO.: 16
	DRAWN - MSB	REVISED -		SCALE: HORIZ. 1"=20' / VERT. 1"=5' PROJECT NO.: 120058   STA. 5173 TO STA. 9100 FED. ROAD DIST. NO. 1 ILLINOIS FED. AID PROJECT		
CHECKED - LDI DATE - 06-18-12	REVISED -	REVISED -			CONTRACT NO. 63759	