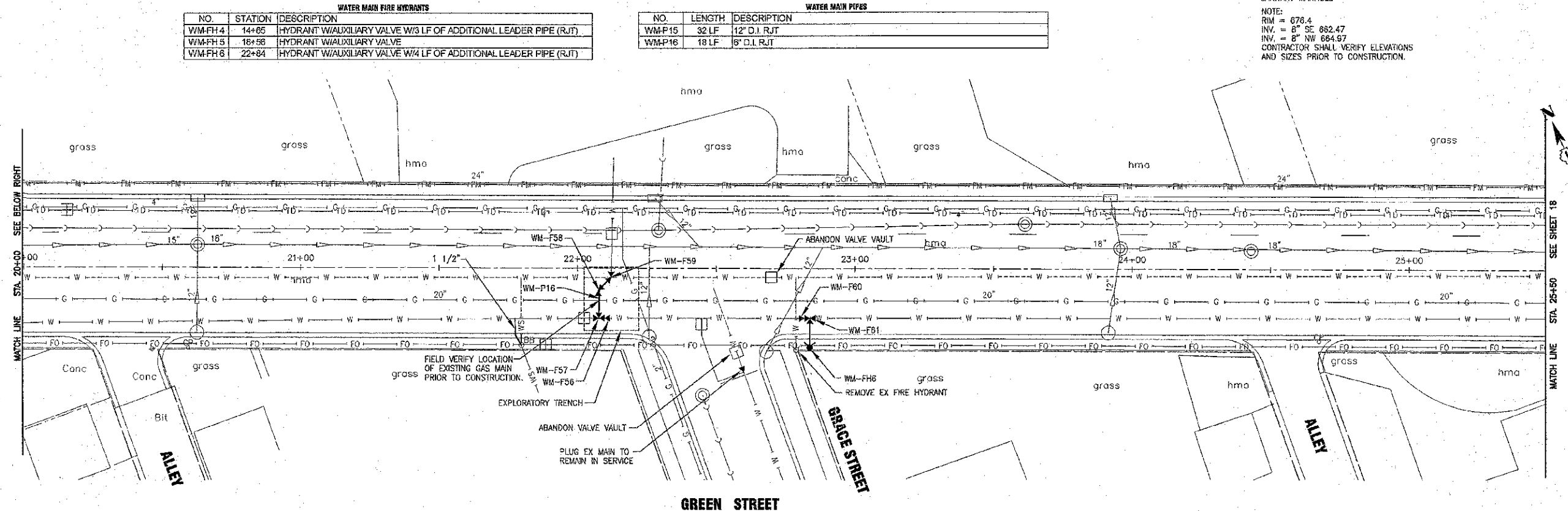
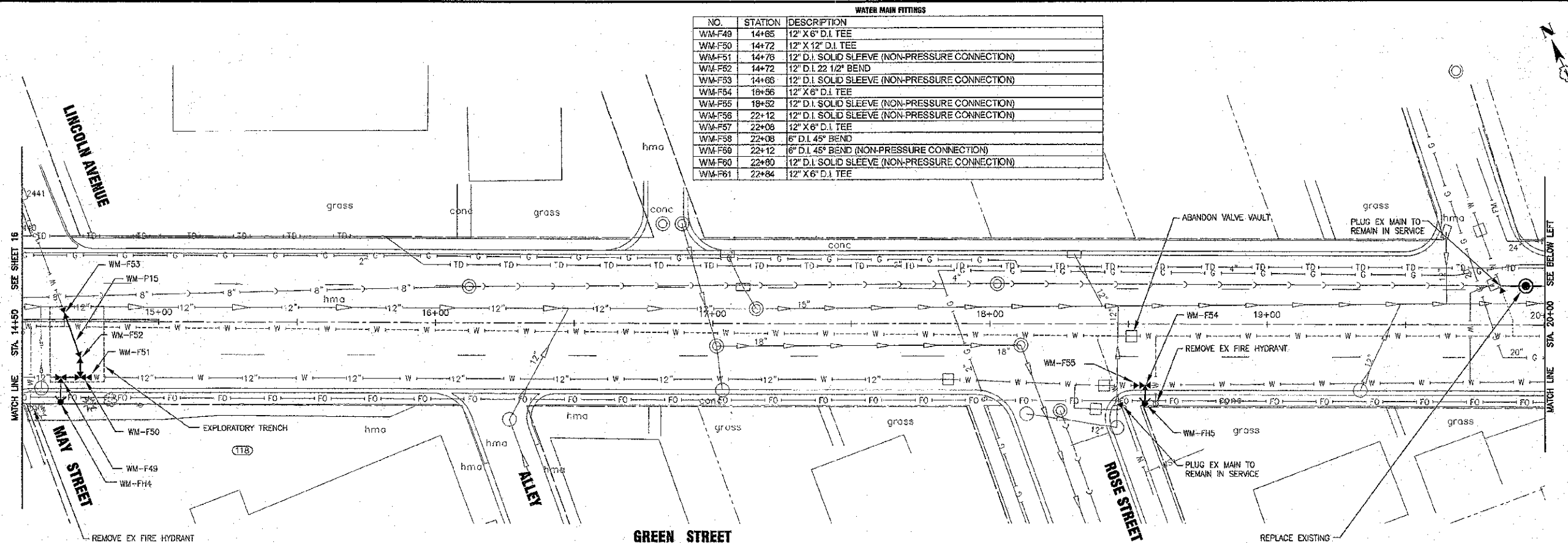


NO.	STATION	DESCRIPTION
WM-F49	14+85	12" X 8" D.I. TEE
WM-F50	14+72	12" X 12" D.I. TEE
WM-F51	14+76	12" D.I. SOLID SLEEVE (NON-PRESSURE CONNECTION)
WM-F52	14+72	12" D.I. 22 1/2" BEND
WM-F53	14+66	12" D.I. SOLID SLEEVE (NON-PRESSURE CONNECTION)
WM-F54	18+56	12" X 6" D.I. TEE
WM-F55	18+52	12" D.I. SOLID SLEEVE (NON-PRESSURE CONNECTION)
WM-F56	22+12	12" D.I. SOLID SLEEVE (NON-PRESSURE CONNECTION)
WM-F57	22+08	12" X 8" D.I. TEE
WM-F58	22+08	6" D.I. 45° BEND
WM-F59	22+12	6" D.I. 45° BEND (NON-PRESSURE CONNECTION)
WM-F60	22+80	12" D.I. SOLID SLEEVE (NON-PRESSURE CONNECTION)
WM-F61	22+84	12" X 6" D.I. TEE

NO.	STATION	DESCRIPTION
WM-FH4	14+85	HYDRANT W/AUXILIARY VALVE W/3 LF OF ADDITIONAL LEADER PIPE (RJT)
WM-FH5	18+56	HYDRANT W/AUXILIARY VALVE
WM-FH6	22+84	HYDRANT W/AUXILIARY VALVE W/4 LF OF ADDITIONAL LEADER PIPE (RJT)

NO.	LENGTH	DESCRIPTION
WM-P15	32 LF	12" D.I. RJT
WM-P16	18 LF	6" D.I. RJT

REPLACE EXISTING SANITARY MANHOLE
 NOTE:
 RIM = 676.4
 INV = 8" SE 682.47
 INV = 8" NW 684.97
 CONTRACTOR SHALL VERIFY ELEVATIONS AND SIZES PRIOR TO CONSTRUCTION.



I:\CRYSTAL_LAKE\BEGUN\120068-TORR WA GREEN CAD\DRAWINGS\DWGS\CURRENT\120068-TOPO-CAD.DWG PLNG
 Plotted: 2/19/2013 10:33 AM By: 078MSB
 Copyright © 2013, By: Bostler & Woodman, Inc.
 State of Illinois - Professional Design Firm
 License No. 184-001121 - Expires 4-30-13



DESIGNED - ALP	REVISED - IDOT REVIEW 12-12-12
DRAWN - UKB	REVISED - PCR VILLAGE 2-7-13
CHECKED - LDH	REVISED -
DATE - 08-09-12	REVISED -

**STATE OF ILLINOIS
 DEPARTMENT OF TRANSPORTATION**

**WATER MAIN REPLACEMENT PLAN
 GREEN STREET**

SCALE: HORIZ. 1"=20' PROJECT NO: 120068 STA. 14+50 TO STA. 22+50

F.A.U. RTE.	SECTION	COUNTY	TOTAL SHEETS	SHEET NO.
3533	10-00067-00-RS	DUPAGE	37	17
CONTRACT NO. 63759				
FED. ROAD DIST. NO. 1 ILLINOIS FED. RD PROJECT				