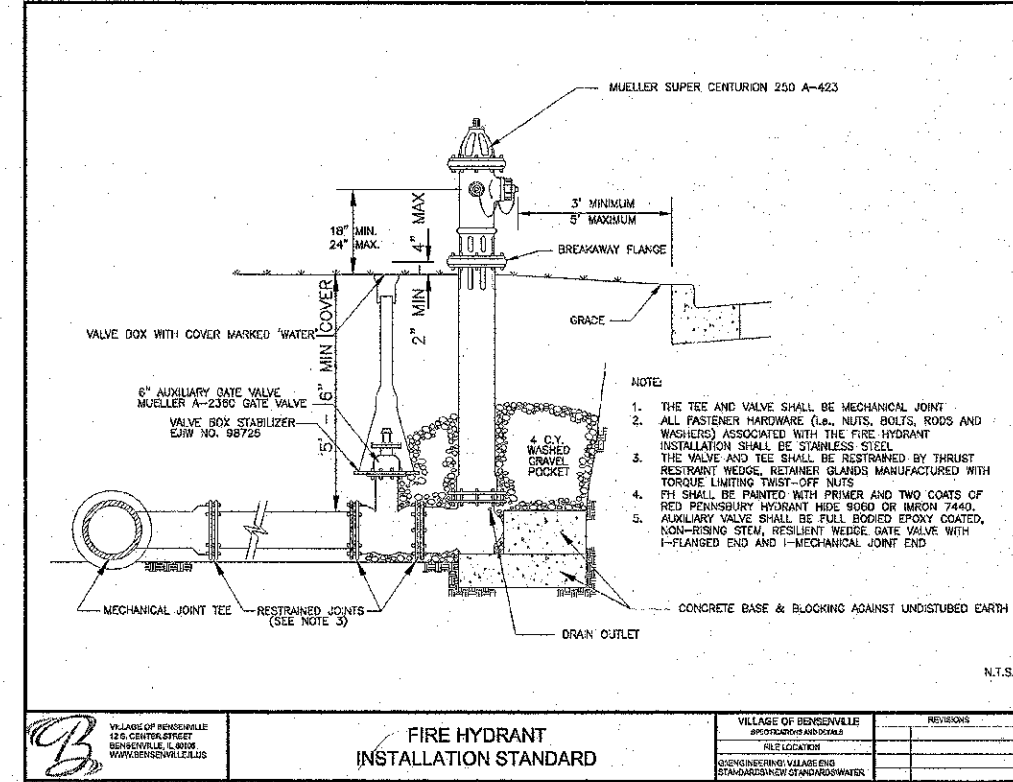
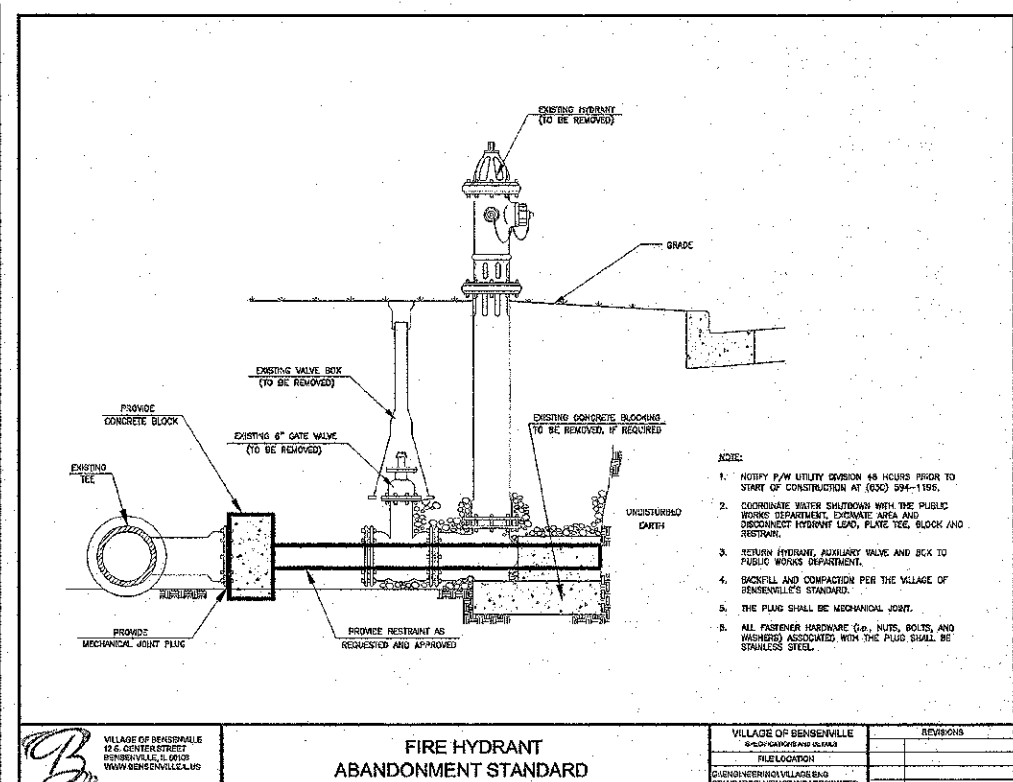
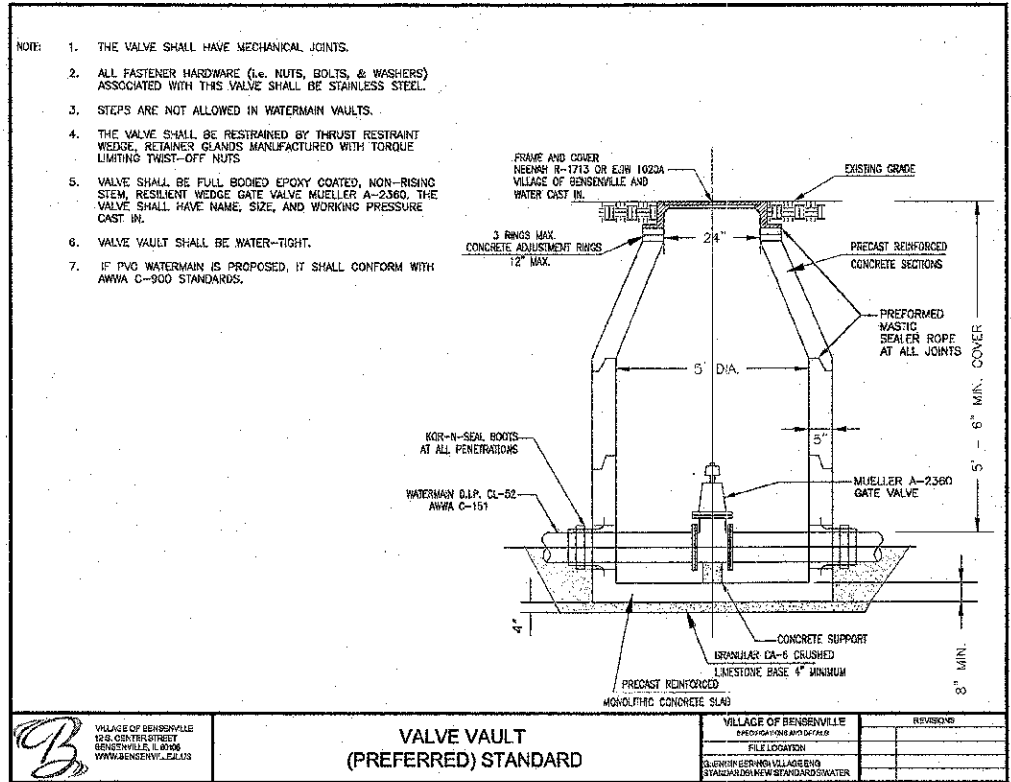
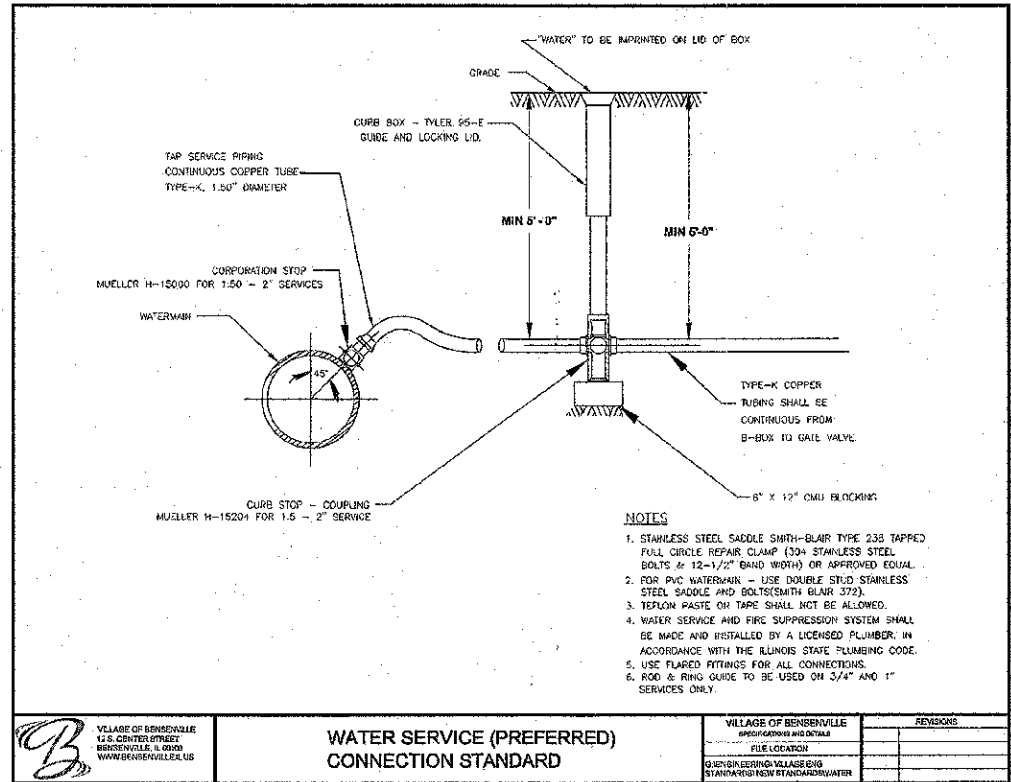
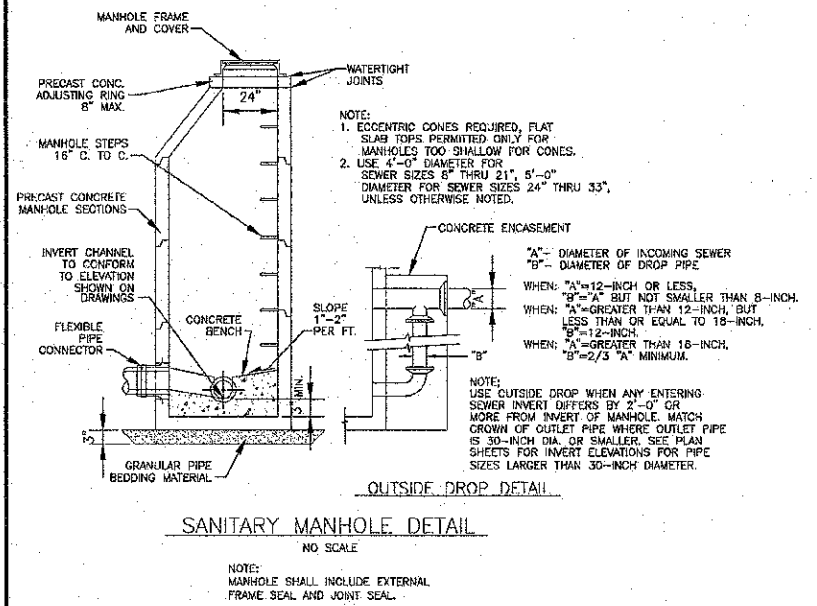


I:\CRYSTAL LAKE\BENH\120058-YORK WM GREEN\CAO\DRAWINGS\DWGS\CURRENT\120058-DETAILS.DWG DETS-02
 Plotted: 2/19/2013 10:24 AM By: 076M5B
 Copyright © 2013, By Baxter & Woodman, Inc.
 State of Illinois - Professional Design Firm
 License No. 184-00172 - Expires 4-30-11



| | |
|-----------------|--------------------------------|
| DESIGNED - ALP | REVISED - IDOT REVIEW 12-12-12 |
| DRAWN - UKB | REVISED - PER VILLAGE 2-7-13 |
| CHECKED - LDH | REVISED - |
| DATE - 08-09-12 | REVISED - |

**STATE OF ILLINOIS
DEPARTMENT OF TRANSPORTATION**

| | |
|--|---|
| VILLAGE OF BENSENVILLE 125 CENTER STREET BENSENVILLE, IL 60015 WWW.BENSENVILLE.IL.GOV | VILLAGE OF BENSENVILLE PROJECTS AND DETAILS FILE LOCATION S:\ENGINEERING\VILLAGE SIG STANDARDS\NEW STANDARDS\WATER |
|--|---|

| | | | | | |
|---|--|-------------------------|--------------------|------------------|---------------|
| DETAILS FOR WATER MAIN REPLACEMENT | SCALE: PROJECT NO: 120058 STA. TO STA. | SECTION: 10-00067-00-RS | COUNTY: DUPAGE | TOTAL SHEETS: 37 | SHEET NO.: 26 |
| F.A.U. R.T.E. 3533 | | | CONTRACT NO. 63759 | | |
| FED. ROAD DIST. NO. ILLINOIS | | | FED. AID PROJECT | | |