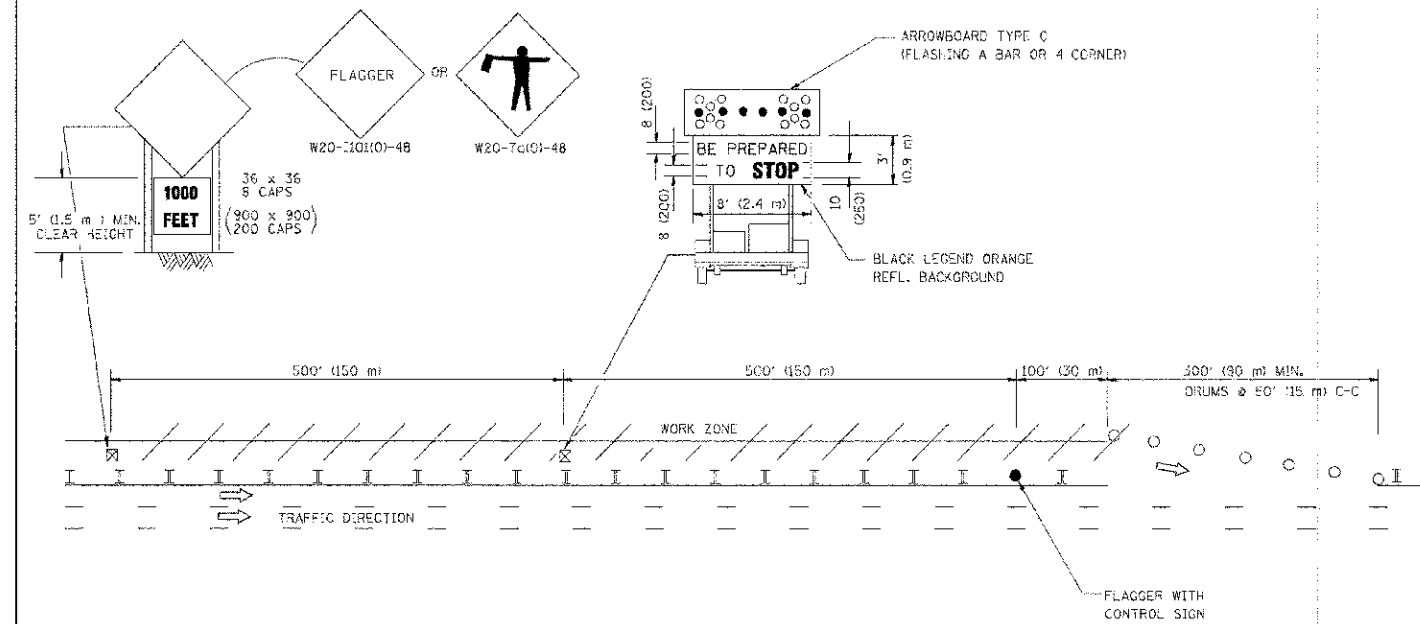
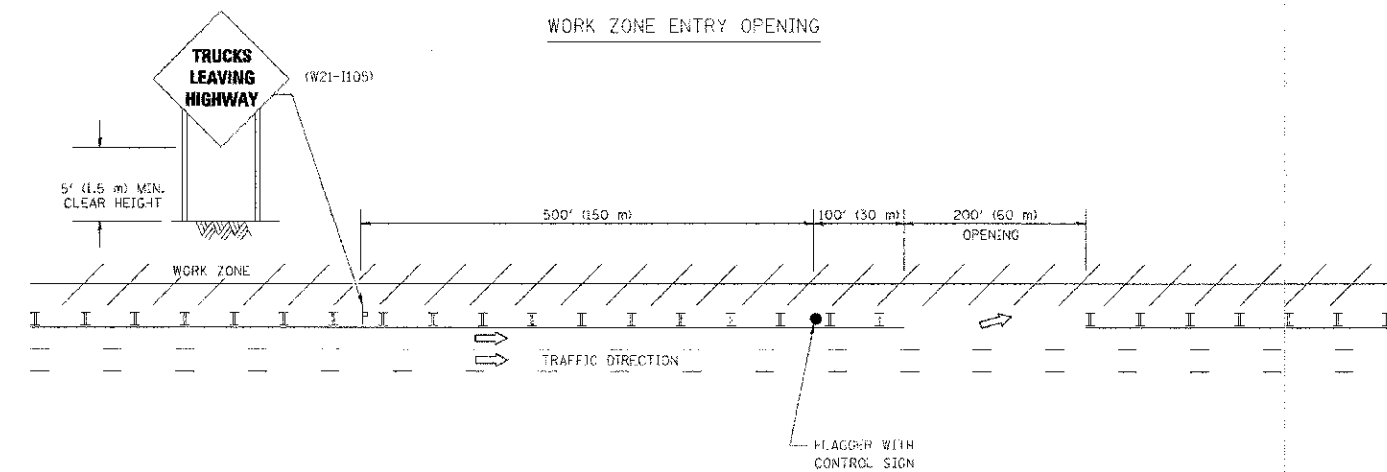


SIGNING FOR FLAGGING OPERATIONS AT WORK ZONE OPENINGS

WORK ZONE EXIT OPENING



WORK ZONE ENTRY OPENING



NOTES:

1. THE ARROWBOARD, THE FLAGGER AHEAD SIGN AND THE TRUCKS LEAVING HIGHWAY SIGN SHALL BE REMOVED OR TURNED AWAY FROM TRAFFIC AND THE EXIT AND ENTRY OPENINGS SHALL BE CLOSED WHEN THE FLAGGING OPERATION CEASES. NON OPERATING EQUIPMENT SHALL COMPLY WITH ARTICLE 701.1.
2. WORK ZONE EXIT OPENINGS SHOULD BE A MINIMUM OF ONE HALF MILE APART.
3. EXITING THE WORK ZONE AT ANY PLACE OTHER THAN AT A WORK ZONE EXIT OPENING WILL BE PROHIBITED.
4. ALL VEHICLES SHALL ENTER THE WORK ZONE AT ENTRY OPENINGS, USING THEIR TURN SIGNALS TO WARN MOTORISTS

ALL DIMENSIONS ARE IN INCHES (MILLIMETERS) UNLESS OTHERWISE SHOWN

COPYRIGHT © 2011 BY ARIZONA & WISCONSIN INC. ...
 STATE OF ILLINOIS - PROFESSIONAL DESIGN FIRM
 LICENSE NO. 98-00017 - EXPIRES 12/31/2013
 420 S. 1ST ST. SUITE 200
 CHICAGO, IL 60602

FILE NAME =	USER NAME = jaygo	DESIGNED -	REVISED - J.A.F. 04-03
W:\dustad\22x94\tsd.dgn		DRAWN -	REVISED - J.A.F. 02-08
		CHECKED -	REVISED - S.P.B. 01-07
		DATE -	REVISED - S.P.B. 12-09

**STATE OF ILLINOIS
DEPARTMENT OF TRANSPORTATION**

**SIGNING FOR FLAGGING OPERATIONS
AT WORK ZONE OPENINGS**

SCALE: NONE | SHEET NO. 1 OF 1 SHEETS | STA. TC STA.

F.A.U. RTE.	SECTION	COUNTY	TOTAL SHEETS	SHEET NO.
3533	10-00087-00-RS	DUPAGE	37	33
TC-18			CONTRACT NO. 63759	
FED. ROAD DIST. NO. 1 ILLINOIS FED. AID PROJECT				