

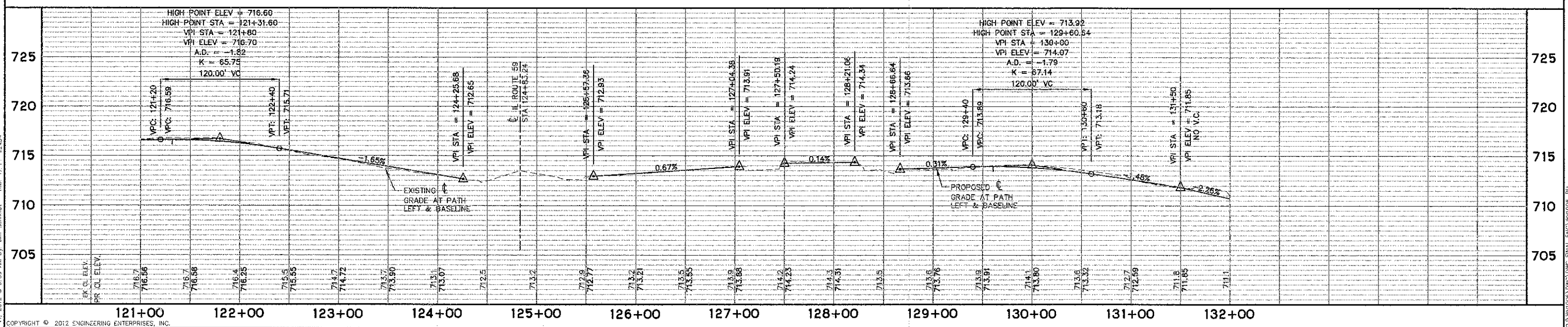
CURVE 6 BASELINE
 PI STA = 121+85.10
 $\Delta = 61^{\circ}25'35''$
 D = 1518'49"
 R = 377.32'
 T = 224.15'
 L = 404.52'
 E = 61.56'
 PC STA = 119+82.84
 PT STA = 123+87.36

W11-15 W/ W11-15p
 & W16-9p
 STA 132+15, 100' LT
 (TO BE INSTALLED
 BY CITY)

SCALE:
 0 50' 100'
 FEET

- NOTES:**
1. ANY EXISTING PAVEMENT MARKING WHICH CONFLICTS WITH PROPOSED PAVEMENT MARKINGS SHALL BE REMOVED ACCORDING TO SECTION 783 OF THE STANDARD SPECIFICATIONS. WATER BLASTING SHALL BE USED TO REMOVE EXISTING PAVEMENT MARKINGS. THE USE OF GRINDERS WILL NOT BE ALLOWED ON EXISTING SURFACE COURSE.
 2. SEE SCHEDULES FOR COMBINATION CURB & GUTTER REMOVAL AND PROPOSED CURB & GUTTER LOCATIONS.
 3. SEE SCHEDULES FOR DETECTABLE WARNING LOCATIONS.

SCALE:
 HORIZONTAL 1" = 50'
 VERTICAL 1" = 5'



Engineering Enterprises, Inc. CONSULTING ENGINEERS 52 Wheeler Road Sugar Grove, Illinois 60554 630.466.6700 / www.eelweb.com		USER NAME = PLOT SCALE = PLOT DATE =	DESIGNED - SWM DRAWN - CLN CHECKED - JRL DATE - 07/20/12	REVISED - REVISED - REVISED - REVISED -	STATE OF ILLINOIS DEPARTMENT OF TRANSPORTATION		PLAN AND PROFILE MEADOW AVENUE		F.A.U. RTE. N/A	SECTION 11-00032-00-BT	COUNTY DUPAGE	TOTAL SHEETS 26	SHEET NO. 12	CONTRACT NO. 63760	FED. ROAD DIST. NO. 1 ILLINOIS FED. AID PROJECT M-9003(641)
--	--	--	---	--	--	--	--	--	--------------------	---------------------------	------------------	--------------------	-----------------	-----------------------	---

Plot Date: October 11, 2012 @ 9:59 AM By: Jim Schmidt - Tab: 12_PP_22x34

Plot: F:\S:\S:\Projects\11-00032-00-BT\MEADOW_AVENUE_FINAL_ENG_V070610.PLT