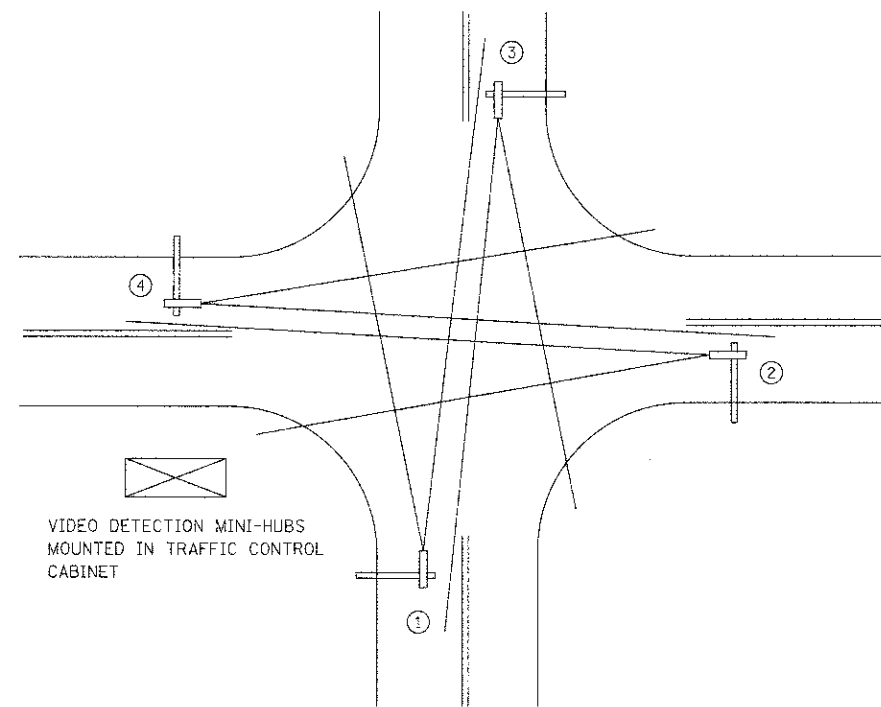
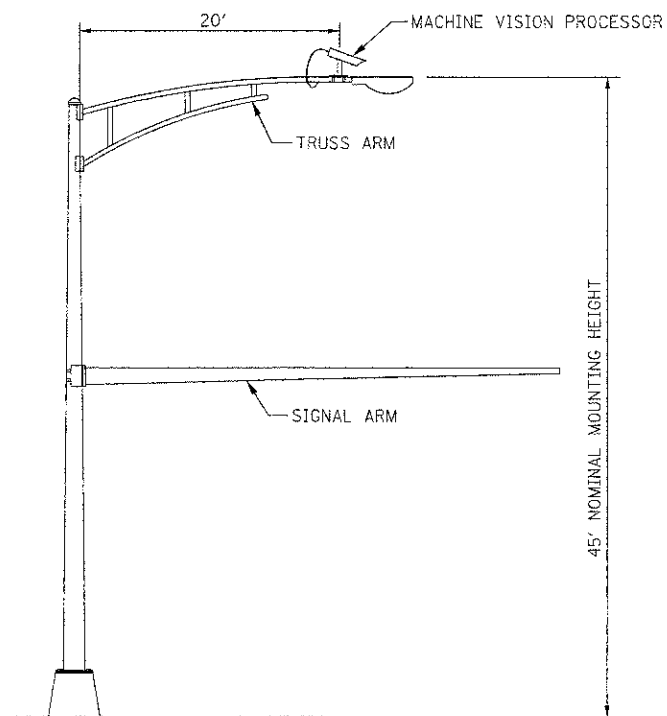


ORIGINAL SURVEY	SURVIVED	BY	DATE
NOTE BOOK	NOTED		
	THAT DATE		
	AREAS CHECKED		



TYPICAL VIDEO VEHICLE DETECTION SYSTEM

(4) MACHINE VISION PROCESSOR ASSEMBLIES AND BRACKETS ① ② ③ ④
POWER CABLE TO EACH MACHINE VISION PROCESSOR (24 VAC)



COMBINATION MAST ARM ASSEMBLY
AND POLE DIMENSIONS
(NOT TO SCALE)

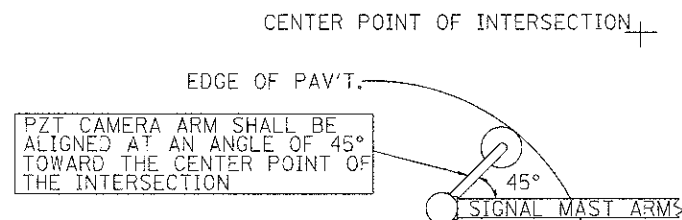
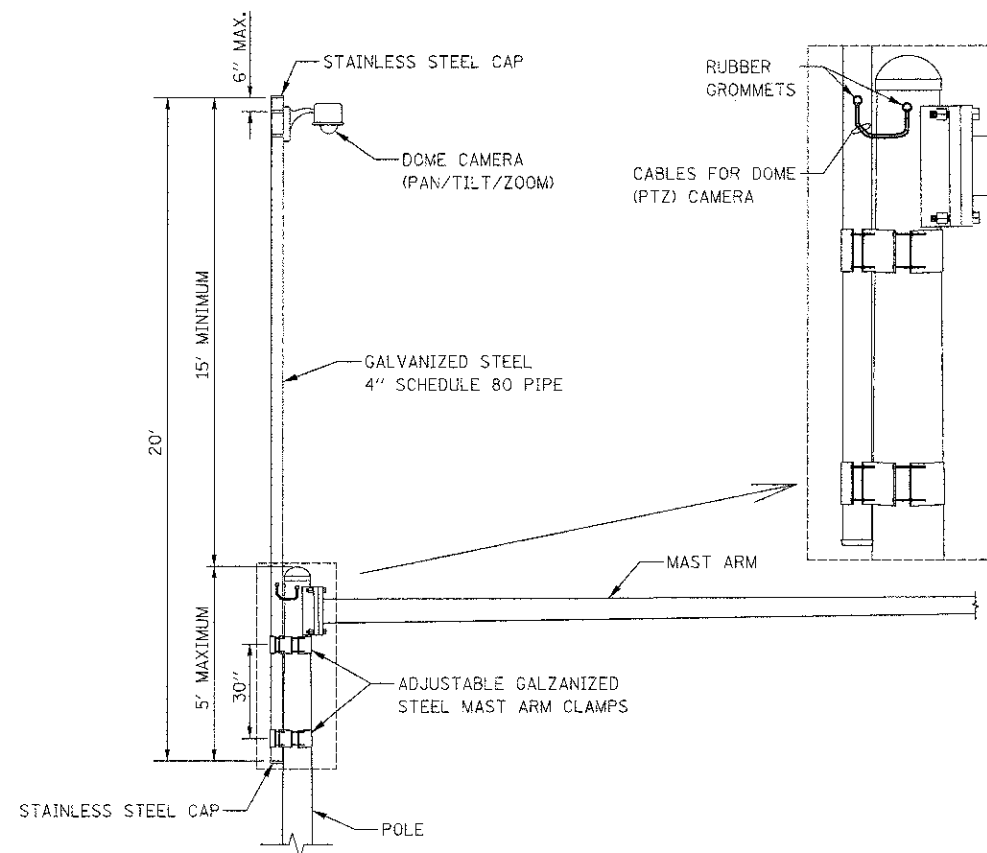
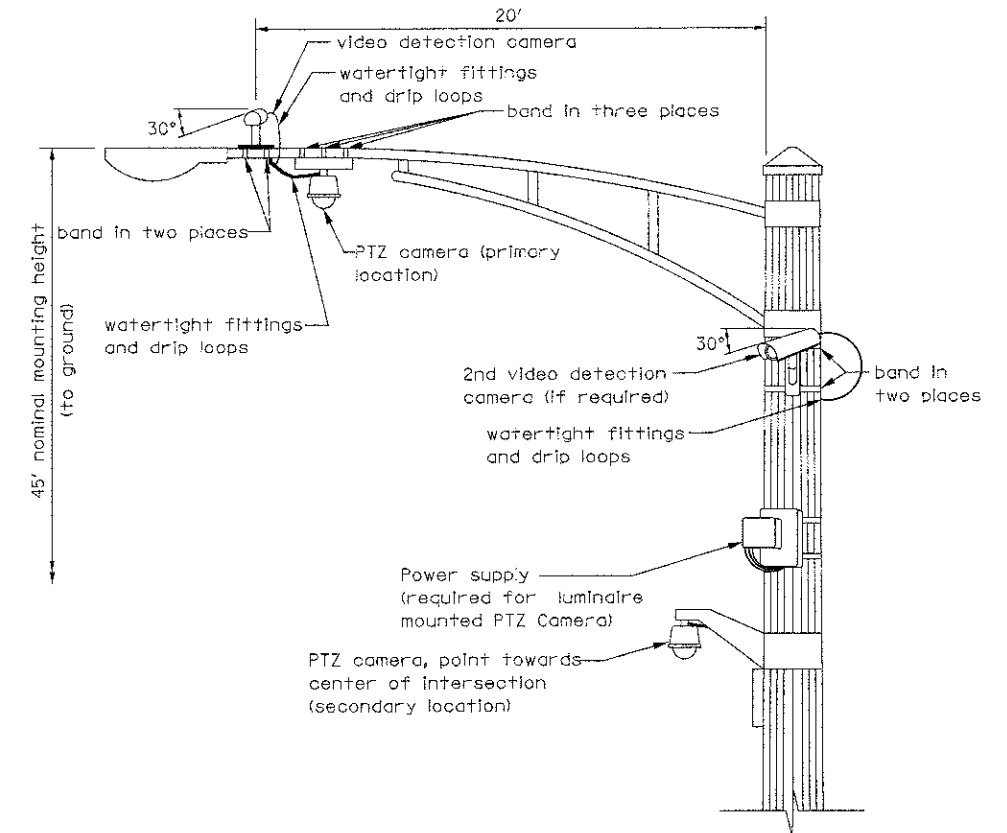


IMAGE SENSOR MOUNTING DETAILS
(NO SCALE)




CAMERA MOUNTING ASSEMBLY DETAIL
(NOT TO SCALE)



VIDEO DETECTION CAMERA(S) AND
DOME (PTZ) CAMERA MOUNTING DETAIL
(NOT TO SCALE)

NOTES FOR SINGLE, DUAL AND MULTIPLE MVP MOUNTING:

- MOUNT LUMINAIRE MOUNTING BRACKET AS HIGH AS POSSIBLE.
- AIM BRACKET TOWARD DIRECTION OF TRAFFIC TO BE DETECTED.
- MOUNT MACHINE VISION PROCESSOR AIMING DOWN AT 30 DEGREE ANGLE.

REVISIONS		DATE			LAKE COUNTY		APPROVED BY: A. KHAWAJA		1C8900	
Mounting Details Revised 5/1/08		5/1/08			Division of Transportation		DATE: APRIL 1, 2007			
2nd Camera Locat. added 1/4/09				VIDEO DETECTION DETAILS						
				F.A.U. RTE.		SECTION		COUNTY	TOTAL SHEETS	SHEET NO.
		0187				05-00121-07-WR		LAKE	223	137
						CONTRACT NO. 63765				
				FED. ROAD DIST. NO. 1		ILLINOIS FED. AID PROJECT				